

# ZOOMLION TECHNOLOGY WITH INGENUITY AND CARE



## THE WORLD'S LEADING EXCAVATOR INTELLIGENT MANUFACTURING FACTORY

ZOOMLION Smart City Earthmoving Machinery Park is an industry-leading intelligent and flexible excavator factory. From a piece of steel plate to an excavator, with high-precision welding process, highly reliable assembly process, high-level coating process and strict quality control, each excavator is delivered with ultimate quality.



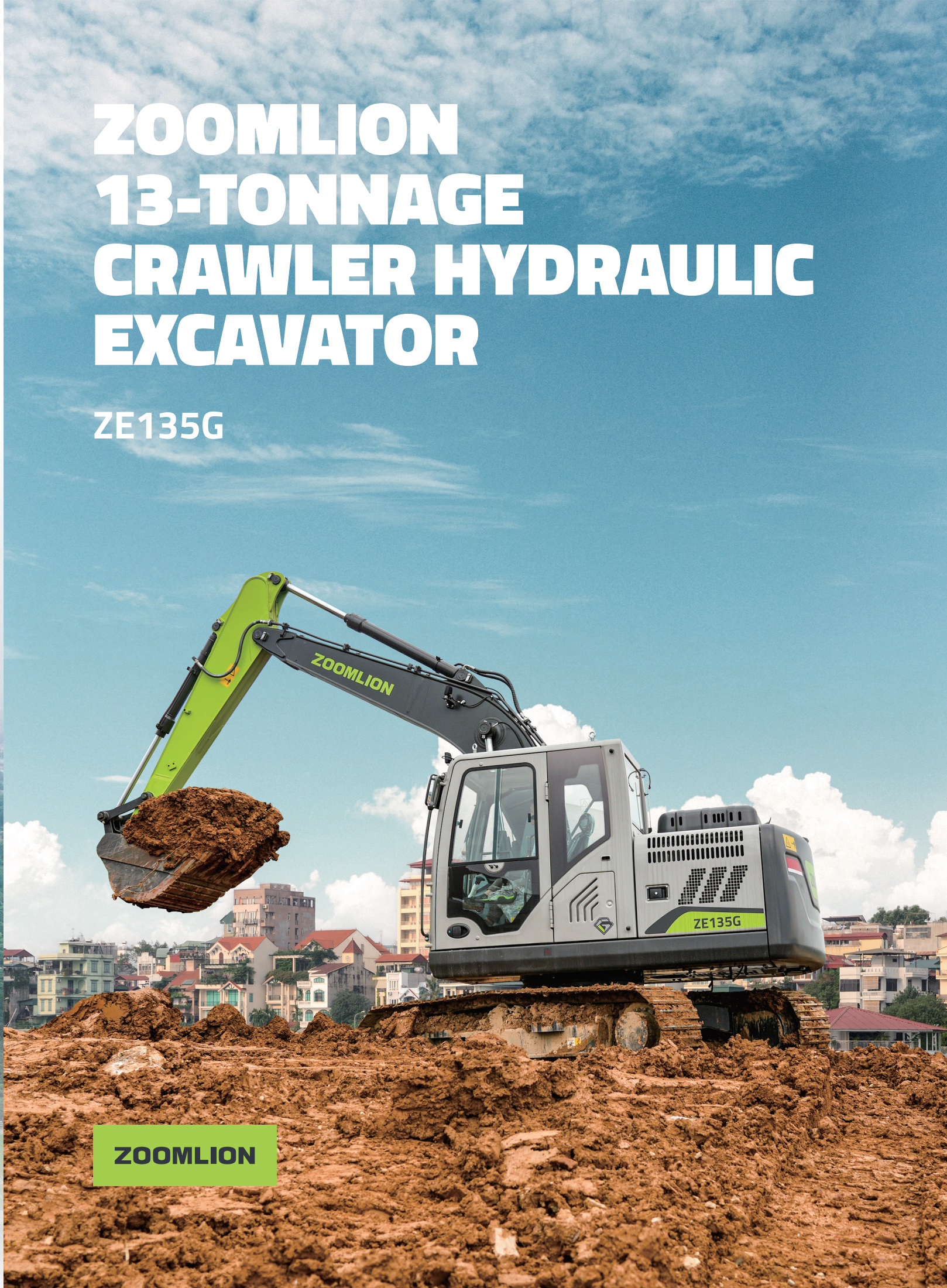
Zoomlion Heavy Industry Science & Technology Co.,Ltd.

Add: No.361, South Yinpen Road, Changsha, Hunan Province, P.R.China 410013      Email: earthmoving@zoomlion.com  
Copyright©2024 Zoomlion. All rights reserved. Reproduction and copying of any part of contents is not allowed for any purposes without Zoomlion's approval.  
Note: Materials and specifications are subject to change without notice. Featured machines in photos may include additional equipment.



# ZOOMLION 13-TONNAGE CRAWLER HYDRAULIC EXCAVATOR

ZE135G







**ZOOMLION**

**ZE135G**

ENGINE POWER:  
**100 kW @ 2200 rpm**

OPERATING WEIGHT:  
**14400 kg**

BUCKET CAPACITY RANGE:  
**0.1~0.6 m<sup>3</sup>**



# SAFE AND COMFORTABLE



Cup holder



Storage box



Cigarette lighter



AUX port



Push start



Large size touch screen

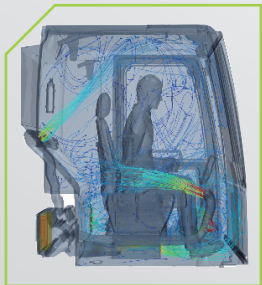
The new generation of G series cab is spacious and bright, with a large area of reinforced glass, and the glass transmittance is increased by more than 11%; Standard ROPS certified cab for greater safety.



The rear view is clearly visible on the monitor thanks to the rear-view camera as standard feature. Travel operation is easier and safer.



The 135mm large-stroke suspension seat is suitable for drivers of different heights.



High power air conditioner with optimized air duct.

# VERSATILE



Standard high efficient reinforced bucket of 0.6m³ capacity; Loading efficiency is high because soil is hardly stuck on it; durable with enhanced design;



The optional 0.55m³ rock bucket is powerful during digging by greatly reducing the cutting resistance of bucket teeth; The bucket is more durable by reducing the wear and impact of the rock on the bottom of the bucket. The stability of the whole machine is improved, and the operation is more comfortable.

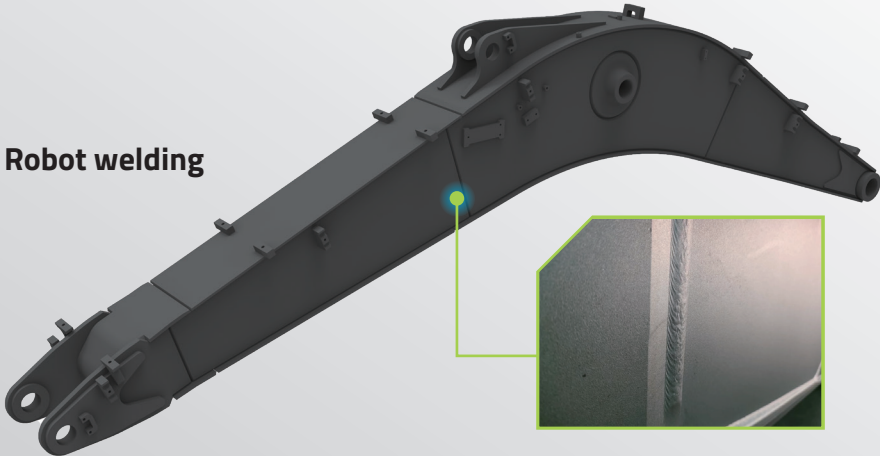
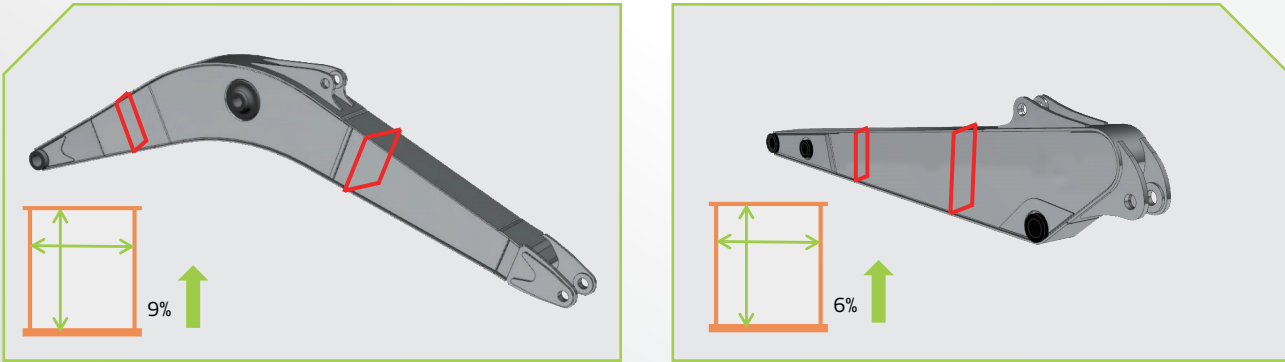


The dedicated buckets for trenching are optional, which can get twice the result with half the effort in the applications like trenching and pipeline laying.

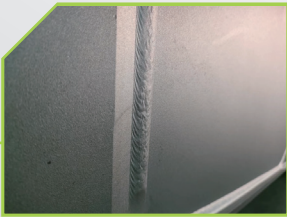
Bucket type	Capacity (m³)	Applicable material density (kg/m³)	Advice for choice
Reinforced bucket	0.6	1500	Digging light or loose materials
Rock bucket	0.55	1800	High abrasion applications like quarry or rock
Trenching bucket	0.34	1800	Digging trenches of 600mm wide
Trenching bucket	0.1	1800	Digging trenches of 300mm wide

# RELIABLE AND DURABLE

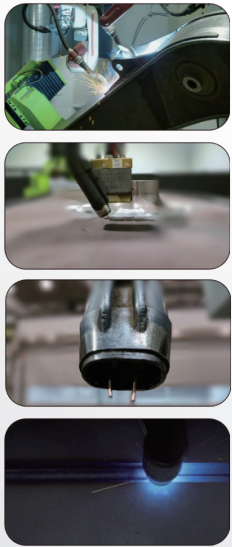
The boom and arm are designed with large cross section. The overall cross section of the boom and arm is increased by 9% and 6% respectively. The stress bearing capacity is greater with larger cross section;



Robot welding

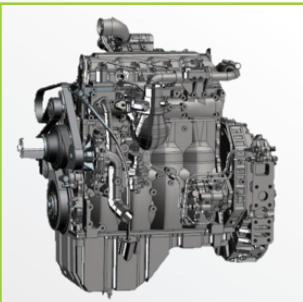
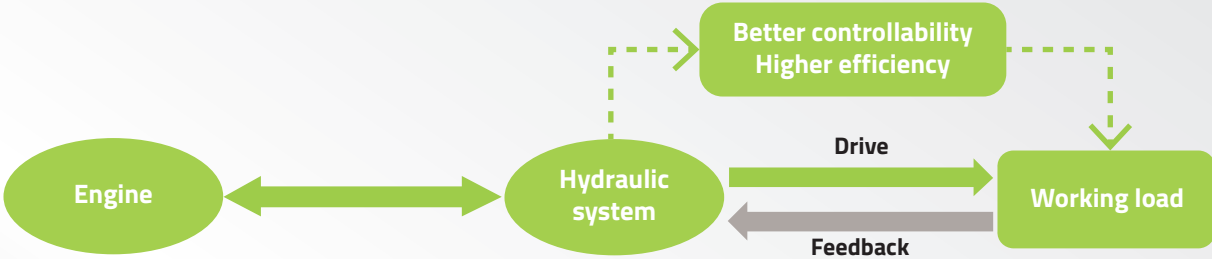


Advanced welding process helps to improve the quality of structural components.

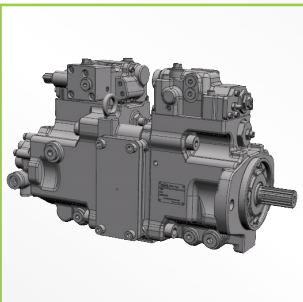


The track roller is used as carrier roller. The service life of the track roller is longer with higher bending and torsional resistance since it's supported on both sides. The track derailment is avoided more effectively.

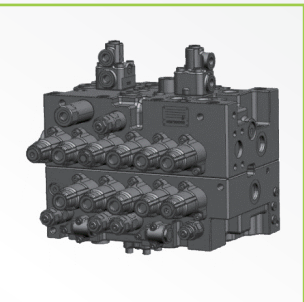
# ENRGY SAVING AND EFFICIENT



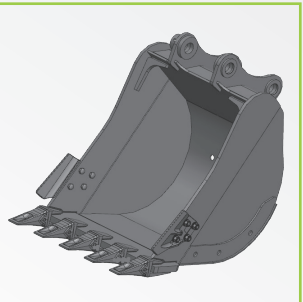
High power engine



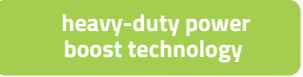
Large displacement pump



Large flow diameter main control valve



Large capacity bucket



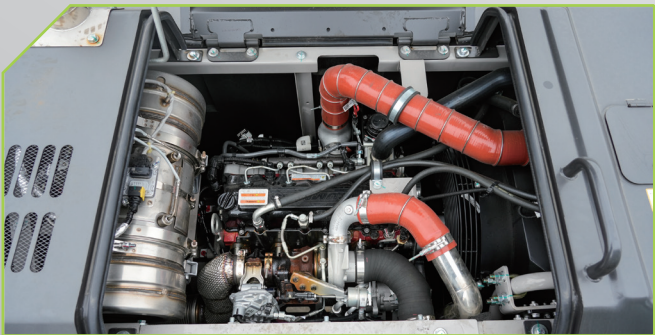
Loading control technology, PID control, load abrupt change technology and heavy-duty power boost technology are used to reduce fuel consumption, improve controllability and working efficiency; Compared with the previous generation model, fuel consumption can be reduced by 6.8% at the same efficiency.



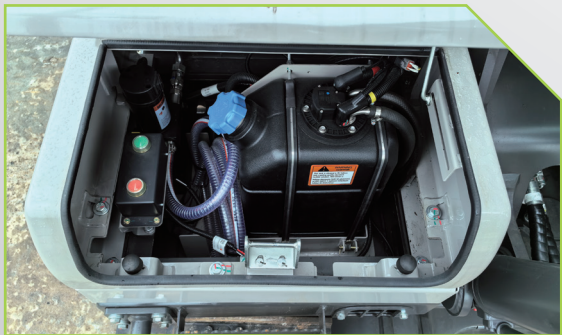
CONVENIENT MAINTENANCE



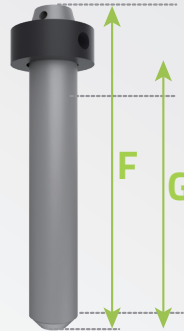
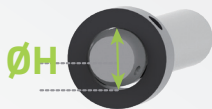
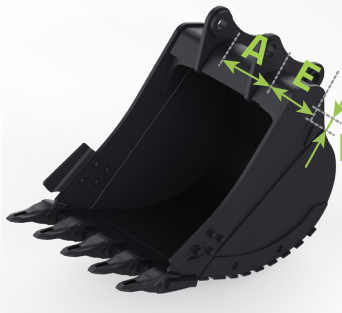
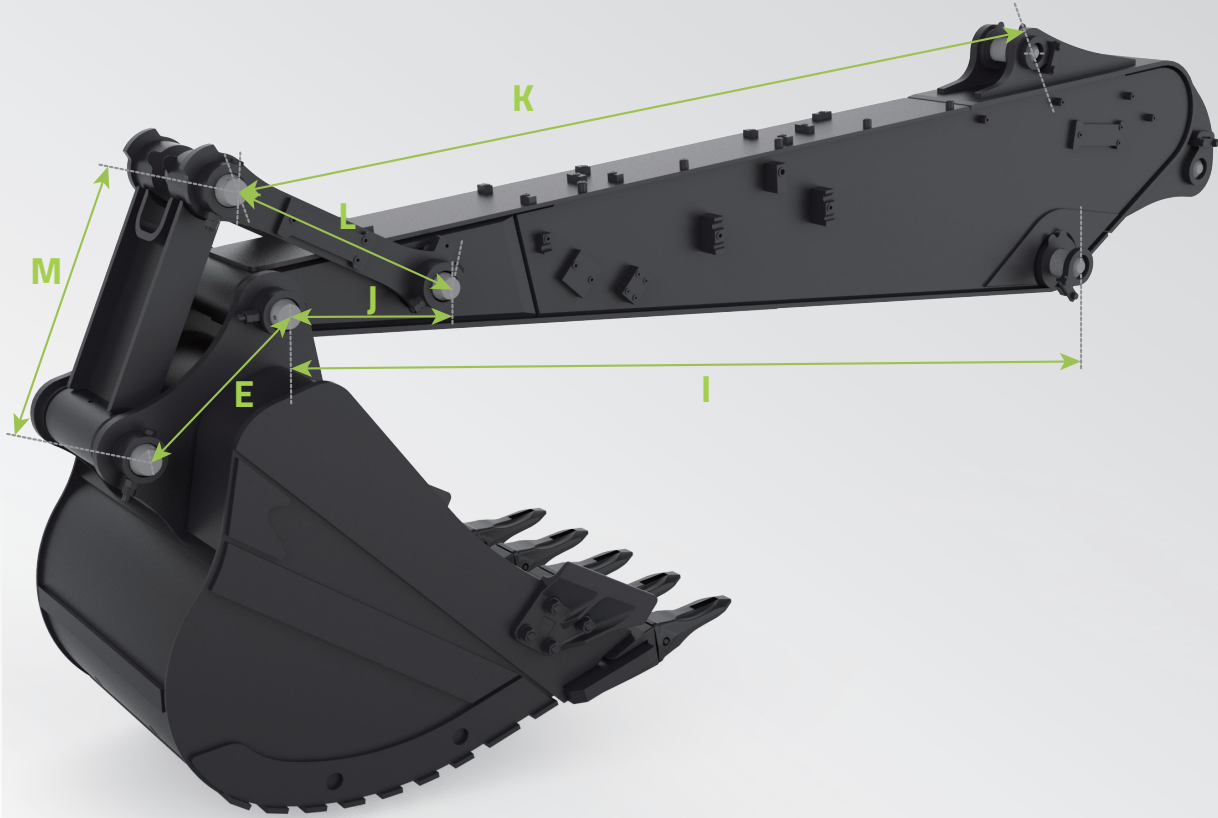
Engine fuel filters, oil filter, air cleaner, hydraulic oil pilot filter and A/C filter are easily accessible at ground level, achieving "one-stop" maintenance on the ground.



The engine hood is divided into three parts. Only the middle hood needs to be opened with low efforts for daily inspection. The engine compartment is large for easier engine maintenance.



It's easy to fill the DEF tank, which is placed in the toolbox.



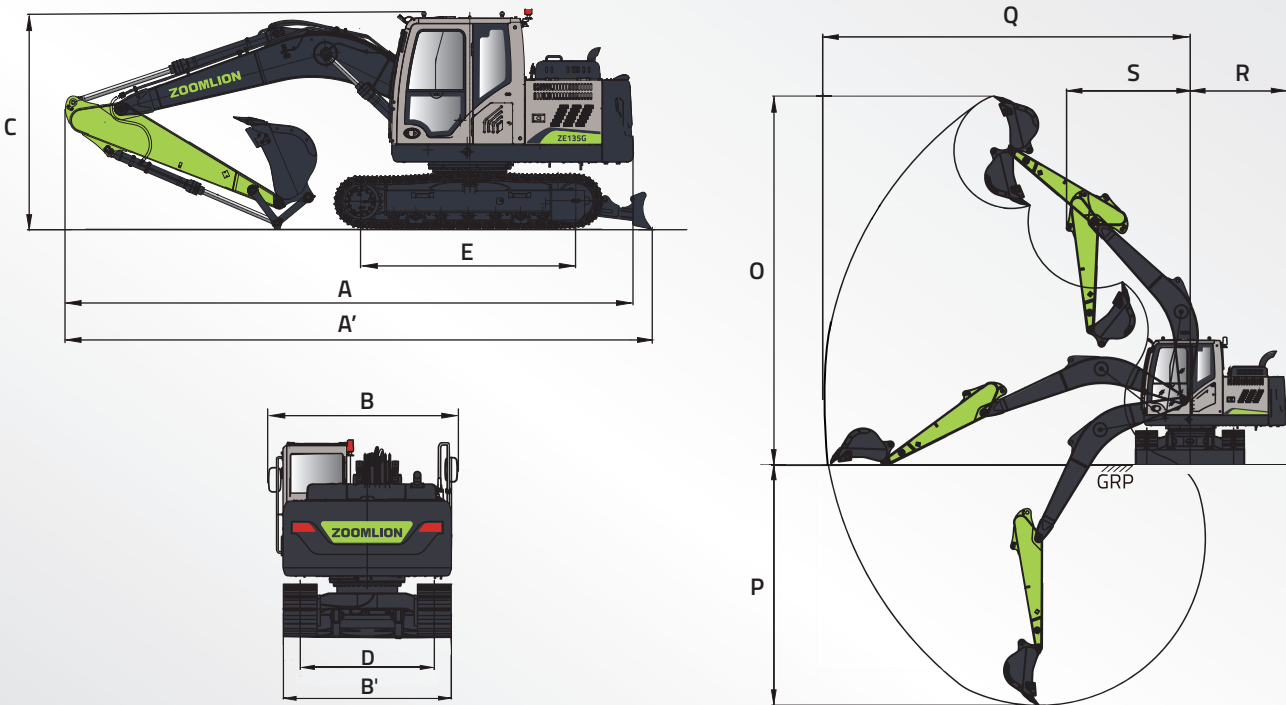
Unit: mm									
MODEL	A	B	C	D	E	F	G	H	I
ZE145GU	271	271	65	65	400	465	412	18	2500
MODEL	J	K	L	M					
ZE145GU	400	2905	550	550					



# TECHNICAL SPECIFICATIONS

	ZE135G
ENGINE	
Brand	Cummins
Model	F3.8
Rated power	100 kW @ 2200 rpm
Displacement	3.8 L
Emission standard	EPA T4F / EU Stage V
HYDRAULIC SYSTEM	
Main pump	Two variable displacement piston pumps Maximum flow: 2×126 L/min
Pilot pump	One gear pump Maximum flow: 20 L/min
Maximum pressure - Equipment	34.3 MPa
Maximum pressure - Swing	27.5 MPa
Maximum pressure - Travel	34.3 MPa
Maximum pressure - Boost	37 MPa
Maximum pressure – Pilot system	3.9 MPa
UPPER FRAME	
Maximum swing speed	12 r/min
Maximum swing torque	39 kN·m
UNDERCARRIAGE	
Number of carrier rollers (each side)	1(Two sides supported track rollers)
Number of track rollers (each side)	7
Number of track guide (each side)	1
Travel speed (high)	5.4 km/h
Travel speed (low)	3.0 km/h
Maximum drawbar pull	130 kN
Gradeability	70 %
SERVICE REFILL CAPACITIES	
Fuel tank	240 L
Engine coolant	27 L
Engine oil	12 L
Swing drive	1.8 L
Final drive (each side)	2.2 L
Hydraulic system	130 L
Hydraulic tank	90 L
WORK EQUIPMENT	
Boom length	4600 mm
Arm length	2500 mm
Bucket digging force	108 kN
Arm digging force	69 kN

	ZE135G
OVERALL DIMENSIONS	
A Overall length (To counterweight)	7700 mm
A' Overall length (To dozer)	7940 mm
B Overall width (including handrail)	2595 mm
B' Overall width (Track)	2490mm
C Overall height	2940 mm
D Track gauge	1990 mm
E Length of track on ground	2920 mm
WORKING RANGE	
O Maximum digging height	8465 mm
P Maximum digging depth	5505 mm
Q Maximum digging reach	8420 mm
R Tail swing radius	2200 mm
S Front minimum swing radius	2830 mm





STANDARD & OPTIONAL FEATURES

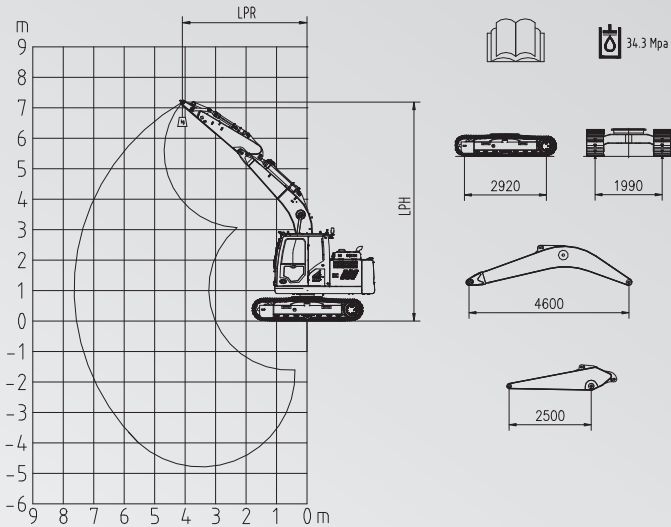
Category	Features	ZE135G
Powertrain	Air cleaner	●
Hydraulic system	Attachments plumbing	●
	Quick coupler plumbing	●
	Boom cylinder hose burst valve	●
	Arm cylinder hose burst valve	●
Cab	ROPS	●
	Mesh guard	○
	Skeleton guard	○
	Fire extinguisher	●
	Mechanical suspension seat	●
	Air suspension seat	○
	Sunshade curtain	○
	Air conditioner	●
	Multifunctional joystick	●
Undercarriage	500mm rubber track pad	○
	500mm track	●
	600mm track	○
	700mm track	○
	Dozer blade	●
Electrical system	Acousto-optic alarm	●
	Emergency stop	●
	12V DC outlets	●
	Rear view camera	●
	Cab front light	● 2 pcs
	Boom light	● 2 pcs
	Upper frame light	● 1 pc
	Refueling pump	●
	GPS	●
	Am/fm radio	●
	Right view camera and light	●
	Counterweight light	●
	Cab rear light	●
Others	Cab rear mirror	● 1 pc
	Handrail rear mirror	● 1 pc

● Standard      ○ Optional

LIFT CAPACITY

Do not attempt to lift or hold any load that is greater than these rated values at their specified lift-point radius and height.

The lift point is located at the centreline of the bucket pivot mounting pin on the arm.



LPH	Rated lift capacity (kg)										
	LPR								Lift capacity at maximum radius		
	1.5m		3.0m		4.5m		6.0m				
m	End	Side	End	Side	End	Side	End	Side	End	Side	m
6.0									1297*	1297*	5.49
4.5							2518*	1808	1187*	1187*	6.46
3.0					4143*	3027	3328	1725	1190*	1190*	9.98
1.5			5040*	5040*	4987*	2717	3186	1602	1282*	1112	7.16
0			5142*	5142*	5257	2482	3066	1498	1481*	1180	7.00
-1.5	6265*	6265*	5129*	5085	5148	2391	3018	1457	1885*	1269	6.50
-3.0	5748*	5748*	5013*	5013*	4562*	2434			2859*	1714	5.56

Capacities marked with an asterisk (\*) are limited by hydraulic capacities. See Note 2.

- The mass of slings and any auxiliary lifting devices shall be deducted from the rated load to determine the net load that may be lifted.
- Lift capacities are based on the machine standing on a firm, uniform supporting surface. The user shall make allowances for job conditions such as soft or uneven ground.
- The operator should be fully acquainted with the Operator's Manual and the Operating Safety Manual furnished by the manufacturer before operating the machine.
- NOTE 1 Lift capacities shown are without the power boost feature engaged.
- NOTE 2 Lift capacities shown do not exceed 75% of minimum tipping loads or 87% of hydraulic capacities.
- NOTE 3 The least stable position is over the side.
- NOTE 4 Lift capacities apply only to the machine as originally manufactured and normally equipped by the manufacturer.
- NOTE 5 The total mass of the machine is 14500kg. Included in this mass are 600mm triple grouser shoes, 4.6m boom, 2.5m arm, 2000kg counterweight, all operating fluids and a 75kg operator.
- NOTE 6 Lift capacities are in compliance with ISO 10567:2007.



**VISION  
CREATES  
FUTURE**

