

# ZOOMLION TECHNOLOGY WITH INGENUITY AND CARE



## The world's leading excavator intelligent manufacturing factory

Zoomlion Smart City Earthmoving Machinery Park is an industry-leading intelligent and flexible excavator factory. From a piece of steel plate to an excavator, with high-precision welding process, highly reliable assembly process, high-level coating process and strict quality control, each excavator is delivered with ultimate quality.



Zoomlion Heavy Industry Science & Technology Co.,Ltd.

Add: No.361, South Yinpen Road, Changsha, Hunan Province, P.R.China 410013      Email: earthmoving@zoomlion.com  
Copyright©2024 Zoomlion. All rights reserved. Reproduction and copying of any part of contents is not allowed for any purposes without Zoomlion's approval.  
Note: Materials and specifications are subject to change without notice. Featured machines in photos may include additional equipment.



# ZOOMLION 37-TONNAGE CRAWLER HYDRAULIC EXCAVATOR

ZE335G  
ZE375G







## EXCELLENT PRODUCT

### POWERFUL AND ENVIRONMENTALLY FRIENDLY

EU Stage V  
Three-speed idling  
ZOOMLION E-COT positive flow hydraulic control system

### COMFORTABLE CAB

Suspension seat  
Large touch screen  
Detail-oriented comfort design

### HIGH ROI

Increased productivity  
Reduced idle time of equipment  
Higher hydraulic system efficiency  
Lower maintenance cost

### SAFETY

ROPS&FOPS cab

Engine power:

**ZE335G:**  
**209 kW @ 2100 rpm**

**ZE375G:**  
**242 kW @ 1800 rpm**

Operating weight:

**ZE335G:**  
**33500 kg**

**ZE375G:**  
**37500 kg**

Bucket capacity:

**ZE335G:**  
**1.6~1.9 m³**

**ZE375G:**  
**1.9~2.2 m³**







#### Load analysis



1. Improvement of heavy load efficiency
2. Load abrupt change technology

#### Load matching



1. RSC swing control technology
2. BPR regeneration control strategy



#### Torque matching



1. Positive flow constant power control model
2. Variable speed curve application

#### Flow analysis



1. Two-pump separate power volume speed regulation technology
2. Multi-mode power control technology application

#### HIGH PRODUCTIVITY

ZE335G&ZE375G are powerful and agile. They adopt ZOOMLION E-COT positive flow hydraulic control technology. The high-power engine provides sufficient power for the operation, and the control system elaborately tuned by ZOOMLION brings fast response.

#### LOW IDLE RATE

ZE335G&ZE375G are equipped with a 650L fuel tank and a customized 58L DEF tank, which reduce the time wasted for refueling and DEF filling and realizes long endurance. Moreover, the consumption percentage of DEF is synchronized with that of fuel.

#### LOW FUEL CONSUMPTION

ZE335G&ZE375G realize fuel saving through the three-speed idling function, in which the high engine speed gradually decreases to 900 rpm if the machine is not operated for certain time.

#### EXCELLENT HYDRAULIC SYSTEM EFFICIENCY

ZE335G&ZE375G adopt the multi-valve spools dynamic control technology and main pump flow dynamic matching technology, which makes the machine operation smoother. The flow of the main pump is adjusted through the working load to make the hydraulic system in the optimal working state, so as to achieve both excellent controllability and low fuel consumption.

ZE335G&ZE375G adopt a positive flow control system independently developed by ZOOMLION. With the application of the load analysis, load matching, flow analysis and torque matching technologies, the work efficiency of large-scale digging and loading operation is improved while the fuel consumption is greatly reduced, creating value for customers.



Type	Density of applicable materials	ZE335G	ZE375G
Reinforced bucket	≤1500kg/m³	1.9m³	2.2m³
Rock bucket	≤1800kg/m³	1.6m³	1.9m³

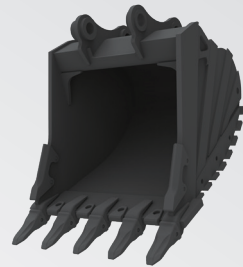
ZE335G		
	1.6 m³	1.9 m³
Weight	1690 kg	1630 kg
Width	1400 mm	1665 mm

ZE375G		
	1.9 m³	2.2 m³
Weight	1930 kg	1950 kg
Width	1665 mm	1750 mm

REINFORCED BUCKET

Standard high efficient reinforced bucket of 1.9m³/2.2m³ capacity; Loading efficiency is high because soil is hardly stuck on it; durable with enhanced design.

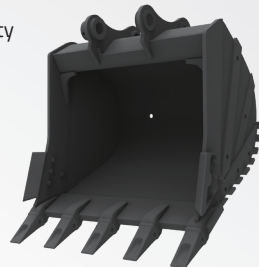
Suitable for light or loose materials.



ROCK BUCKET

The optional 1.6m³/1.9m³ rock bucket is powerful during digging by greatly reducing the cutting resistance of bucket teeth; The bucket is more durable by reducing the wear and impact of the rock on the bottom of the bucket. The stability of the whole machine is improved, and the operation is more comfortable.

Suitable for high abrasion applications like quarry or rock.

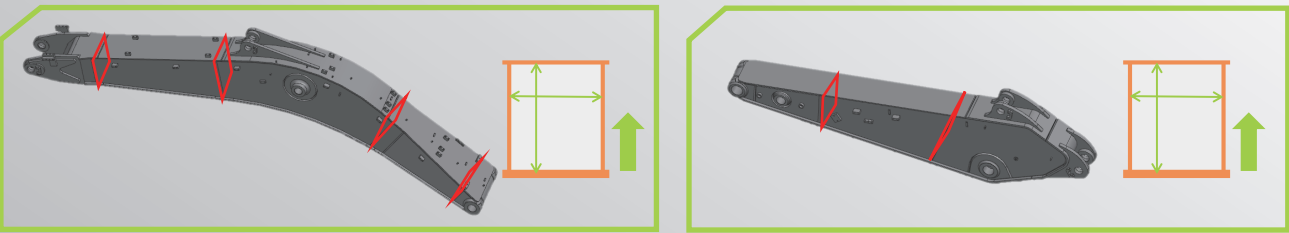


UNDERCARRIAGE

Larger grounding area for higher stability of the machine; Reinforced design for higher durability; Long undercarriage with 8/9 track rollers, which are tightly engaged with the chain for stronger bearing capacity; The carrier rollers are replaced by track rollers, which are supported at both sides, with stronger bearing capacity and more effective protection for the track.



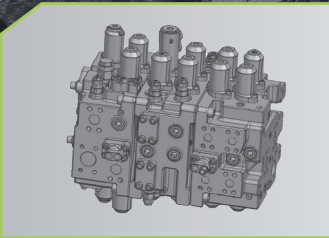
- ZE335G&ZE375G large-section and forging support work equipment. Compared with the previous generation model, the boom section has increased by 21%, the arm section has increased by 25%.
- The "End of stick" of the ZE335G&ZE375G arm is the widest 414mm, and the pin shaft is increased from 90mm to 100mm, making excavation and breaking more reliable.



POWERFUL PERFORMANCE:

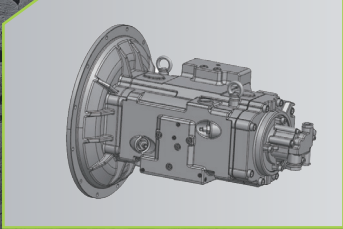
- ZE335G&ZE375G have the highest drawbar pull compared to other products of the similar level and meet a variety of working environments.
- ZE335G&ZE375G have the highest drawbar pull compared to other products of a similar level and meets a variety of working environments.

Thanks to its powerful performance. ZE335G&ZE375G are suitable for engineering, mining or municipal, it can do any work required by customers. Zoomlion ZE335G & ZE375G will be the biggest strength of customers



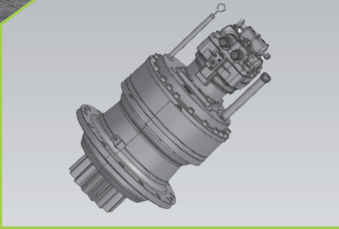
↑ Diameter increased by 14%

- The diameter of the main valve is increased and the spool structure is optimized to reducing the friction between the hydraulic oil and the plumbing, effectively reducing the oil duct pressure loss, and improving energy efficiency.



↑ Displacement increased by 13%

- The product performance is mature, stable and reliable;
- The flow and pressure of the dual pumps are improved, and the breaking speed is faster;
- The structure is compact, the efficiency is higher and the noise is lower.



- Large displacement rotary motor, large output torque;
- Mature brand in the industry, high reliability.



# EXCELLENT CAB

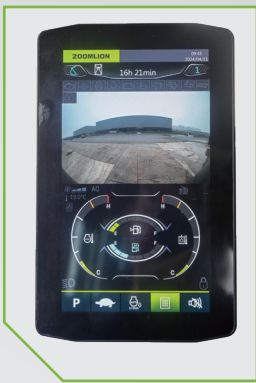


## SPACIOUS CAB

The cab is equipped with a comfortable suspension seat, which can relieve the fatigue of the user. The large-stroke adjustable armrest box, armrest and seat provide the most comfortable state for the user. Large area glass provides the cab with high transmittance. Large space and comfortable working environment are conducive to the improvement of operator productivity.

## USER-CENTERED DESIGN:

ZE335G&ZE375G are equipped with radio as standard and provides an AUX interface to connect mobile devices to the in-vehicle entertainment system. The large touch screen at the front right provides the operator with convenient operation and in-depth technical experience. The multi-function integrated panel on the right side allows the operator to perform one-button start and gives consideration to the operators who get used to using physical keys. The temperature controlled storage box at the right rear provides the operator with a suitable food storage location.



# SAFE EQUIPMENT

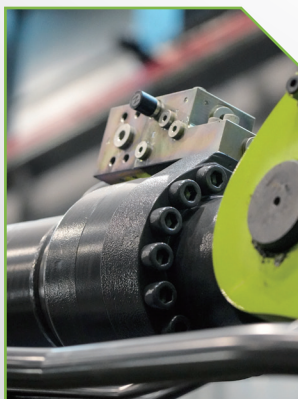
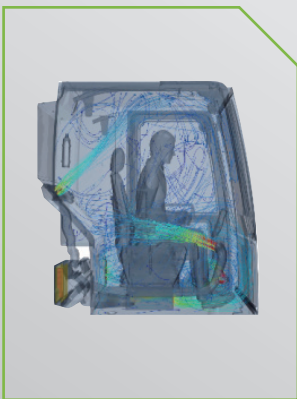
The safety performance of ZE335G&ZE375G meet the latest industry standard. They provide various safety configurations, which minimizes the work safety risks of the personnel near and inside the equipment. The travel alarm lamp, emergency stop switch, high-density anti-skid cover and around view camera provide guarantee for safety.

The ROPS cab adopts a optimized high-strength frame of high impact resistance and durability. Low-noise design makes the working environment more comfortable.

High-power air conditioner and optimized air duct design, which brings more comfortable body feeling.

The aftertreatment unit is placed under the right hood which is normally closed, preventing injuries to personnel in the high temperature area of the aftertreatment unit.

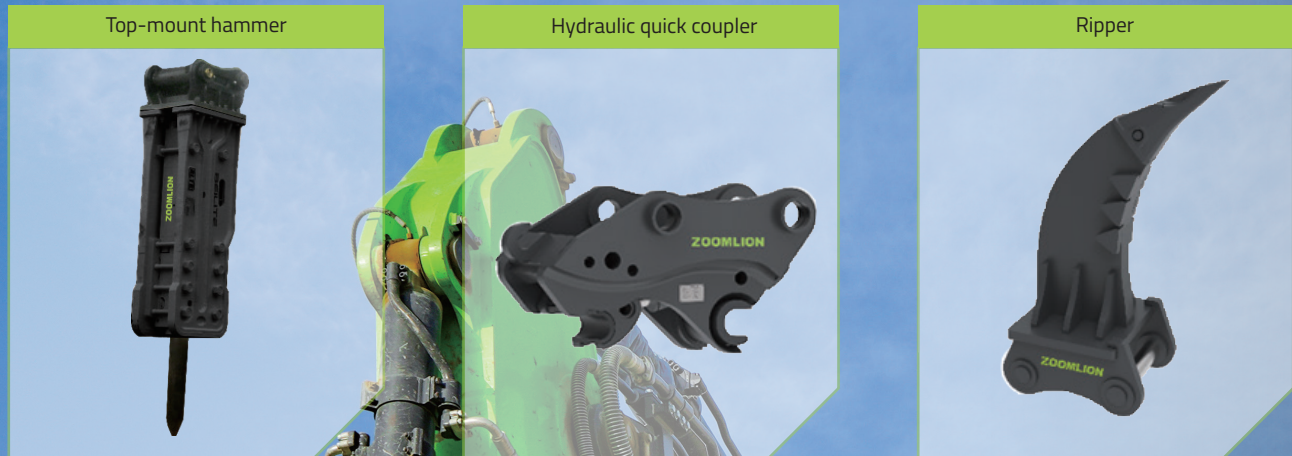
Hose burst valves are standard for the boom and arm to ensure safety in construction and hoisting.





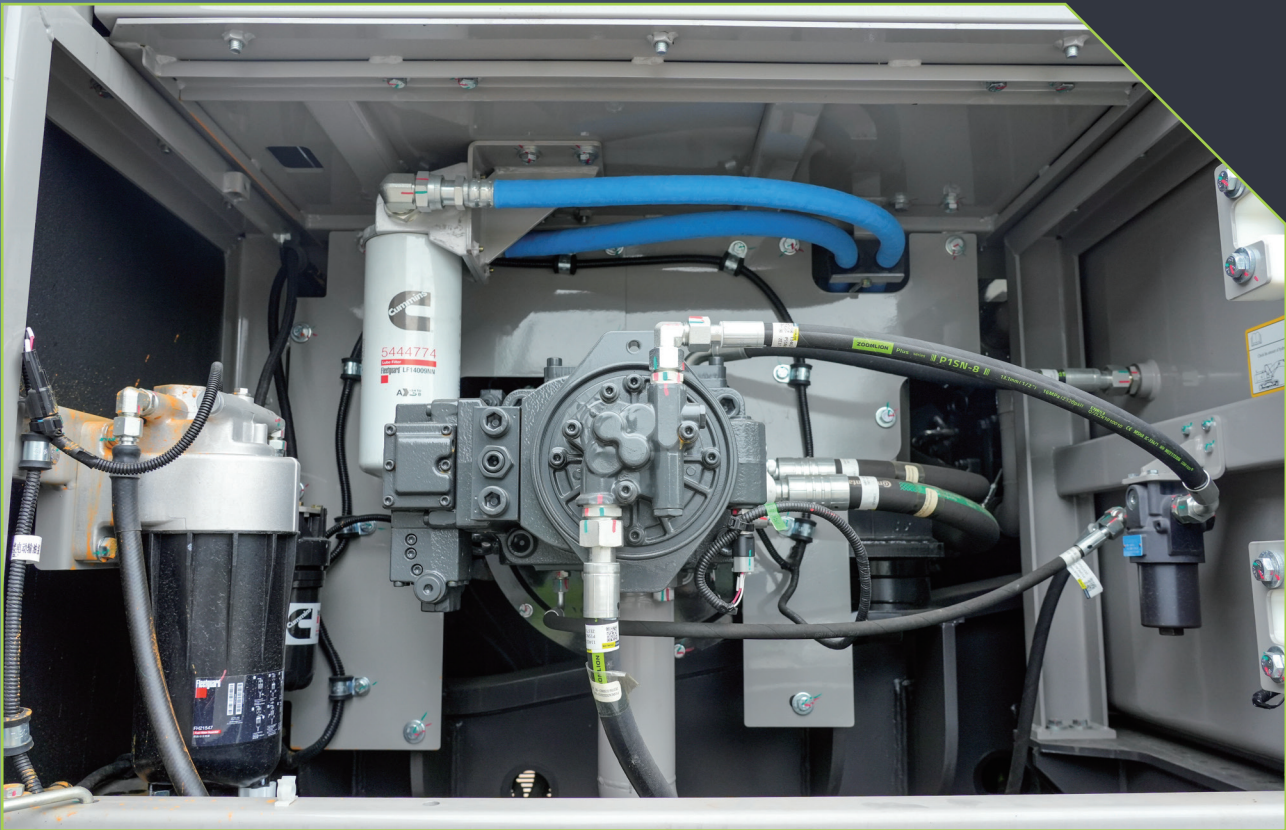
# ATTACHMENTS

Excavators can be used for different functions by installing different attachments, further improving efficiency. Better stability and performance can be achieved by installing Zoomlion attachments. Attachments can be easily replaced by using Zoomlion quick coupler.



# "ONE-STOP" MAINTENANCE

Most of the filters are placed in one location for easy and quick inspection and maintenance.



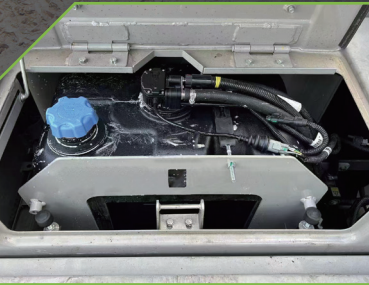
## ZOOMLION MAINTENANCE

ZOOMLION Maintenance is a maintenance program installed on ZOOMLION machines. It reminds the customer to replace the maintenance parts and record the time of the next maintenance. ZOOMLION service engineer can also maintain the machine through this program. For relevant terms and conditions, please contact your local ZOOMLION dealer.



## DEF TANK AND PUMP

The DEF tank is placed near the toolbox, and a side door can be opened to facilitate the replacement of DEF pump filter element.





# ZOOMLION GENUINE PART



The use of ZOOMLION genuine parts can maintain the best reliability and productivity of the machine, Please purchase parts from ZOOMLION or ZOOMLON authorized dealers.

ZOOMLION spare parts warehouses have prepared sufficient inventory, We will send you the parts you need from the nearest distribution center once we receive your order.

## Hydraulic oil filter elements



## Special hydraulic oil



## Fuel filter elements



Zoomlion's service engineers are located in various key cot; around the world, According to the distribution of customer! Equipment engineers will be stationed in that country for a long time,if customers need it, our mission will be fulfilled. Every year, Zoomlion's service engineers carry out a service trip to visit new and old customers. We collect reasonable opinions, and listen carefully to customer service requests. We meet the needs of customers in a timely manner and respond to the reasonable needs of customers. We train the operators of each piece of equipment to ensure the stable operation of the equipment.





# CUSTOMER SERVICE

Zoomlion' s slogan is "Vision creates future" . It is not just a simple slogan, but an unshakable determination to exceed our customer' s expectations. Zoomlion has always upheld this belief and tries to implement it in everything that we do for customers. The service we offer to customers is to think about what they think about and worry about what they worry about.

Zoomlion promises that once you choose us, we are ready to respond with the first arrival and solution anytime, anywhere.

Various service content, professional service teams, global service networks and systematic technical support are readily available from Zoomlion for an effective response and solution upon your request no matter where you are in the world and what time it is.



Category	Features	ZE335G	ZE375G
Powertrain	Air cleaner	●	●
	Swirl type air pre-cleaner	○	○
Hydraulic system	Boom cylinder hose burst valve	●	●
	Arm cylinder hose burst valve	●	●
	Attachments plumbing	●	●
	Quick coupler plumbing	●	●
Cab	ROPS	●	●
	Mesh guard	○	○
	Skeleton guard	○	○
	Fire extinguisher	●	●
	Air suspension seat	●	●
	Sunshade curtain	●	●
	Air conditioner	●	●
	Multifunction joystick	●	●
Undercarriage	600mm track	●	●
	700mm track	○	○
	800mm track	○	○
Electrical system	Acousto-optic alarm	●	●
	Emergency stop	●	●
	12V DC outlets	●	●
	Rear view camera	●	●
	Cab front light	● 2 pcs	● 2 pcs
	Boom light	● 2 pcs	● 2 pcs
	Upper frame light	● 1 pc	● 1 pc
	Refilling pump	●	●
	GPS	●	●
	AM/FM radio	●	●
	Right view camera and light	●	●
	Counterweight light	●	●
	Cab rear light	●	●
Others	Cylinder sleeve	○	○
	Cab rear mirror	● 1 pc	● 1 pc
	Handrail rear mirror	● 1 pc	● 1 pc
	Auto greasing system	○	○
	2D guiding system	○	○

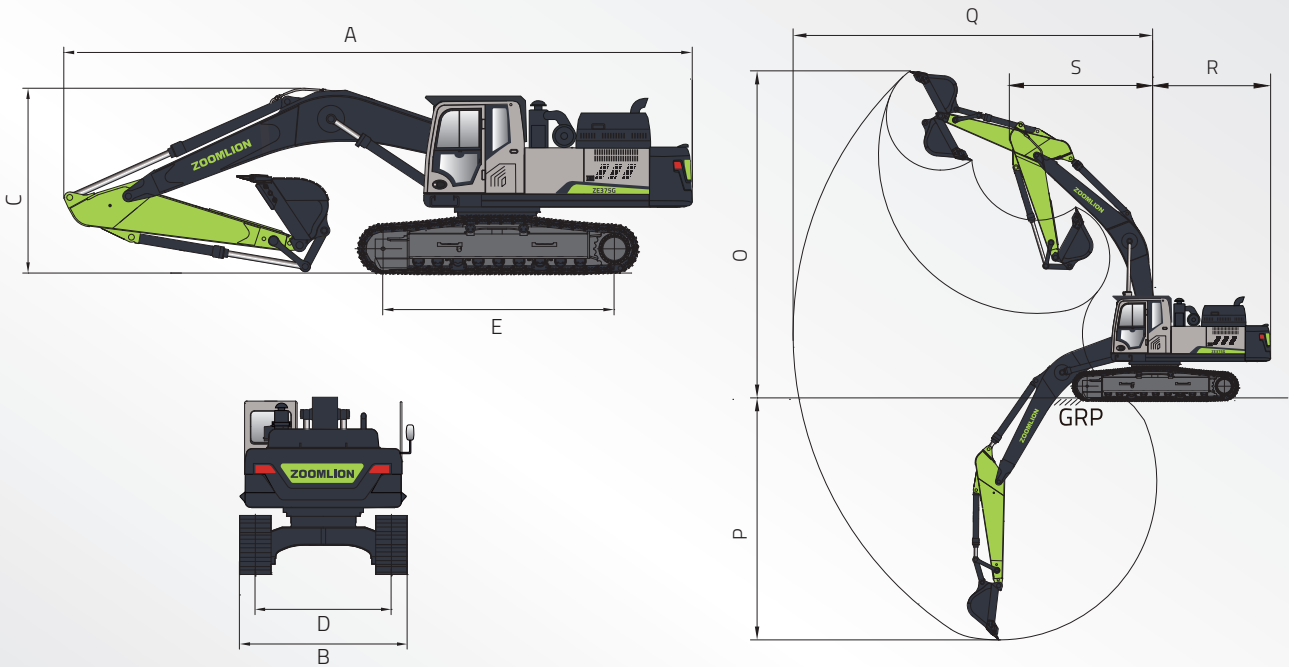
● STANDART ○ OPSİYONEL



	ZE335G	ZE375G
ENGINE		
Brand	Cummins	
Model	L9	
Rated power	209 kW @ 2100 rpm	242 kW @ 1800 rpm
Emission standards	EU Stage V	
Displacement	8.9 L	
HYDRAULIC SYSTEM		
Main pump	Two variable displacement piston pumps Maximum flow: 2×315 L/min	
Pilot pump	One gear pump Maximum flow: 26.25 L/min	
Maximum pressure - Equipment	34.3 MPa	
Maximum pressure - Swing	31 MPa	
Maximum pressure - Travel	34.3 MPa	
Maximum pressure - Boost	3.9 MPa	
Maximum pressure – Pilot system	37.3 MPa	
UPPER FRAME		
Maximum swing speed	10.5 r/min	10.6 r/min
Maximum swing torque	116 kNm	121 kNm
UNDERCARRIAGE		
Number of carrier rollers (each side)	2 (Two sides supported track rollers)	
Number of track rollers (each side)	8	9
Number of track guard (each side)	2	3
Travel speed (high)	5.6 km/h	5.2 km/h
Travel speed (low)	3.6 km/h	3.1 km/h
Maximum drawbar pull	266 kN	320 kN
Gradeability	70%	
SERVICE REFILL CAPACITIES		
Fuel tank	650 L	
Engine coolant	32 L	
Engine oil	30 L	
Swing drive	10.5 L	
Final drive (each side)	9.5 L	10 L
Hydraulic system	300 L	
Hydraulic tank	180 L	
DEF tank	58 L	

# TECHNICAL SPECIFICATIONS

	ZE335G	ZE375G
OVERALL DIMENSIONS		
A Overall length	10960 mm	11350 mm
B Overall width	3190 mm	
C Overall height	3790 mm	3780 mm
D Track gauge	2590 mm	
E Length of track on ground	3930 mm	4140 mm
WORKING RANGE		
O Maximum digging height	9740 mm	10010 mm
P Maximum digging depth	6940 mm	7075 mm
Q Maximum digging reach	10625 mm	10870 mm
R Tail swing radius	3500 mm	3620 mm
S Front minimum swing radius	4390 mm	4525 mm



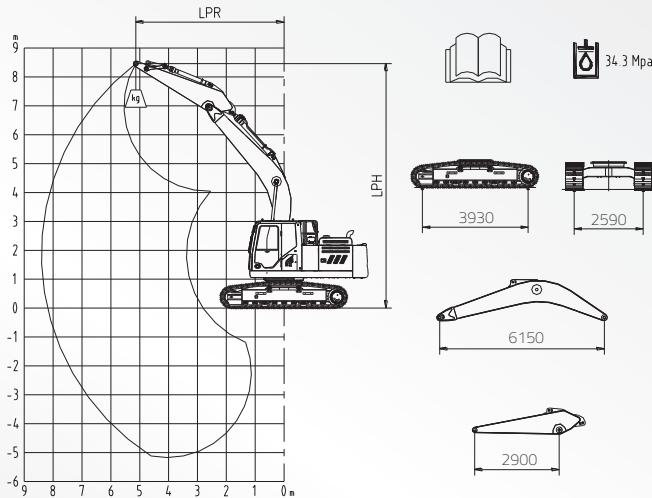


LIFT CAPACITY

ZE335G(6.15m+2.9m)



Do not attempt to lift or hold any load that is greater than these rated values at their specified lift-point radius and height.  
The lift point is located at the centreline of the bucket pivot mounting pin on the arm.



LPH	Rated lift capacity (kg)												
	LPR										Lift capacity at maximum radius		
	1.5m		3.0m		4.5m		6.0m		7.5m				
m	End	Side	End	Side	End	Side	End	Side	End	Side	End	Side	m
7.5											*7030	*7030	6.90
6.0							*7689	6486			*6726	5919	7.89
4.5			*11447	*9181	*9181	9001	*8006	6321			*6740	5110	8.49
3.0			*13995	12937	*10342	8471	*8539	6067	7785	4984	*7002	4703	8.80
1.5			*15753	12038	*11327	8003	9031	5820	7626	4840	7181	4561	8.84
Grade			*16123	11657	11787	7708	9040	5647	7518	4743	7381	4659	8.62
-1.5	*15305	*15305	*15374	11596	11528	7599	8921	5589			7959	5058	8.11
-3.0	*17899	*17899	*13583	11739	*10318	7671					*7909	5952	7.26
-4.5	*12993	*13993	*10201	*10201							*7327	*7327	5.91

Capacities marked with an asterisk (\*) are limited by hydraulic capacities. See Note 2.

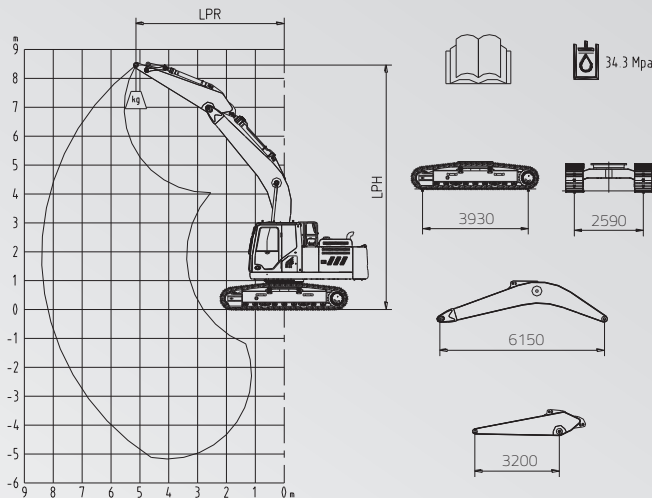
- The mass of slings and any auxiliary lifting devices shall be deducted from the rated load to determine the net load that may be lifted.
- Lift capacities are based on the machine standing on a firm, uniform supporting surface. The user shall make allowances for job conditions such as soft or uneven ground.
- The operator should be fully acquainted with the operator's manual and the operating safety manual furnished by the manufacturer before operating fixe machine.
- NOTE 1 Lift capacities shown are without the power boost feature engaged.
- NOTE 2 Lift capacities shown do not exceed 75% of minimum tipping loads or 87% of hydraulic capacities.
- NOTE 3 The least stable position is over the side.
- NOTE 4 Lift capacities apply only to the machine as originally manufactured and normally equipped by the manufacturer.
- NOTE 5 The total mass of the machine is 33.500kg. Included in this mass are 600mm triple grouser shoes, 6.15 m boom, 2.9 m arm, 3950 kg counterweight, all operating fluids and a 75 kg operator.
- NOTE 6 Lift capacities are in compliance with ISO 10567:2007.

LIFT CAPACITY

ZE335G(6.15m+3.2m)



Do not attempt to lift or hold any load that is greater than these rated values at their specified lift-point radius and height.  
The lift point is located at the centreline of the bucket pivot mounting pin on the arm.



LPH	Rated lift capacity (kg)												
	LPR										Lift capacity at maximum radius		
	1.5m		3.0m		4.5m		6.0m		7.5m				
m	End	Side	End	Side	End	Side	End	Side	End	Side	End	Side	m
7.5											*6888	*6888	6.91
6.0							*7508	6344			*6590	5693	7.92
4.5			*11217	*11217	*8980	8841	*7813	6166			*6599	4926	8.53
3.0			*13679	12643	*10109	8277	*8152	5989	7039	4822	*6849	4501	8.86
1.5			*15418	11714	*11068	7781	*8809	5635	6924	4670	6969	4342	8.63
Grade			*15767	11321	*11515	7470	8203	5454	6817	4571	7148	4428	8.62
-1.5	*11289	*15289	*15035	11277	*11255	7361	*8108	5396			*7682	4807	8.11
-3.0	*17476	*17476	*13259	11439	*10055	7444					*7620	5745	7.26
-4.5	*12597	*12597	*9907	*9907							*7001	*7001	5.91

Capacities marked with an asterisk (\*) are limited by hydraulic capacities. See Note 2.

- The mass of slings and any auxiliary lifting devices shall be deducted from the rated load to determine the net load that may be lifted.
- Lift capacities are based on the machine standing on a firm, uniform supporting surface. The user shall make allowances for job conditions such as soft or uneven ground.
- The operator should be fully acquainted with the operator's manual and the operating safety manual furnished by the manufacturer before operating fixe machine.
- NOTE 1 Lift capacities shown are without the power boost feature engaged.
- NOTE 2 Lift capacities shown do not exceed 75% of minimum tipping loads or 87% of hydraulic capacities.
- NOTE 3 The least stable position is over the side.
- NOTE 4 Lift capacities apply only to the machine as originally manufactured and normally equipped by the manufacturer.
- NOTE 5 The total mass of the machine is 33.500kg. Included in this mass are 600mm triple grouser shoes, 6.15 m boom, 3.2 m arm, 3950 kg counterweight, all operating fluids and a 75 kg operator.
- NOTE 6 Lift capacities are in compliance with ISO 10567:2007.

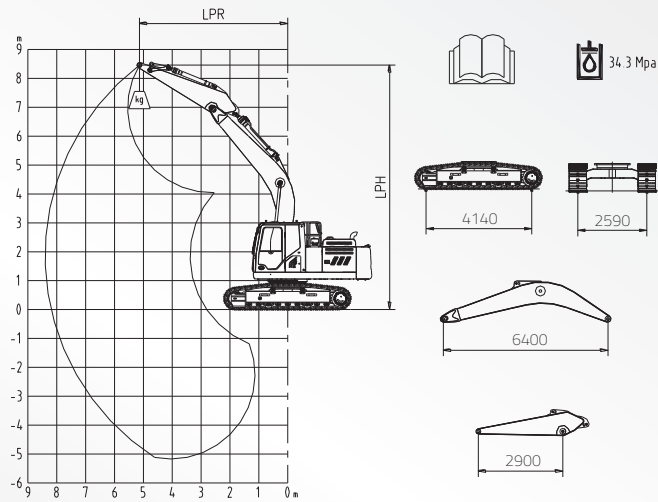


LIFT CAPACITY

ZE375G(6.4m+2.9m)



Do not attempt to lift or hold any load that is greater than these rated values at their specified lift-point radius and height.  
The lift point is located at the centreline of the bucket pivot mounting pin on the arm.



LPH	Rated lift capacity (kg)												
	LPR										Lift capacity at maximum radius		
	1.5m		3.0m		4.5m		6.0m		7.5m				
m	End	Side	End	Side	End	Side	End	Side	End	Side	End	Side	m
7.5											*7526	*7526	7.28
6.0							*7913	7197			*7233	6119	8.21
4.5			*12383	*12383	*9701	*9701	*8322	6957			*7279	5333	8.78
3.0			*15015	13962	*10910	9237	*8896	6639	*7750	4982	*7755	4990	8.99
1.5			*16610	12986	*11877	8692	*9407	6356	*7883	4852	*7795	4771	9.10
Grade			*16726	12644	*12279	8367	*9617	6140			*7904	4870	8.87
-1.5	*15279	*15279	*15822	12619	*11952	8247	*9321	6079			*7966	5260	8.38
-3.0	*17990	*17990	*13980	12808	*10763	8362	*7984	6205			*7879	6060	7.55
-4.5	*13255	*13255	*10689	*10689	*7872	*7872					*7285	*7285	6.25

Capacities marked with an asterisk (\*) are limited by hydraulic capacities. See Note 2.

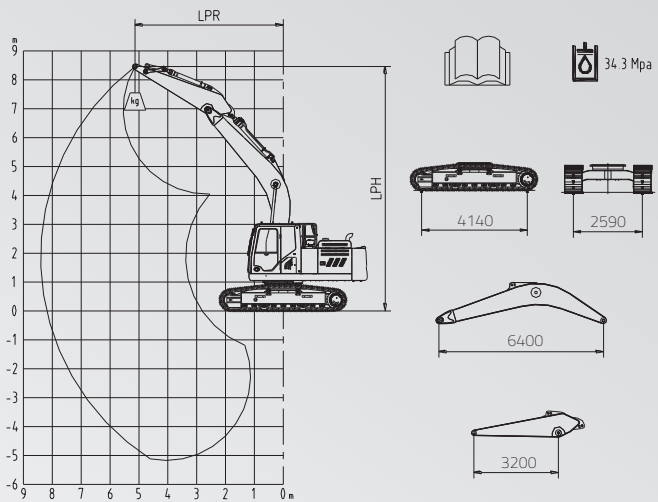
- The mass of slings and any auxiliary lifting devices shall be deducted from the rated load to determine the net load that may be lifted.
- Lift capacities are based on the machine standing on a firm, uniform supporting surface. The user shall make allowances for job conditions such as soft or uneven ground.
- The operator should be fully acquainted with the operator's manual and the operating safety manual furnished by the manufacturer before operating fixe machine.
- NOTE 1 Lift capacities shown are without the power boost feature engaged.
- NOTE 2 Lift capacities shown do not exceed 75% of minimum tipping loads or 87% of hydraulic capacities.
- NOTE 3 The least stable position is over the side.
- NOTE 4 Lift capacities apply only to the machine as originally manufactured and normally equipped by the manufacturer.
- NOTE 5 The total mass of the machine is 37.500kg. Included in this mass are 600mm triple grouser shoes, 6.4 m boom, 2.9 m arm, 5800 kg counterweight, all operating fluids and a 75 kg operator.
- NOTE 6 Lift capacities are in compliance with ISO 10567:2007.

LIFT CAPACITY

ZE375G(6.4m+3.2m)



Do not attempt to lift or hold any load that is greater than these rated values at their specified lift-point radius and height.  
The lift point is located at the centreline of the bucket pivot mounting pin on the arm.

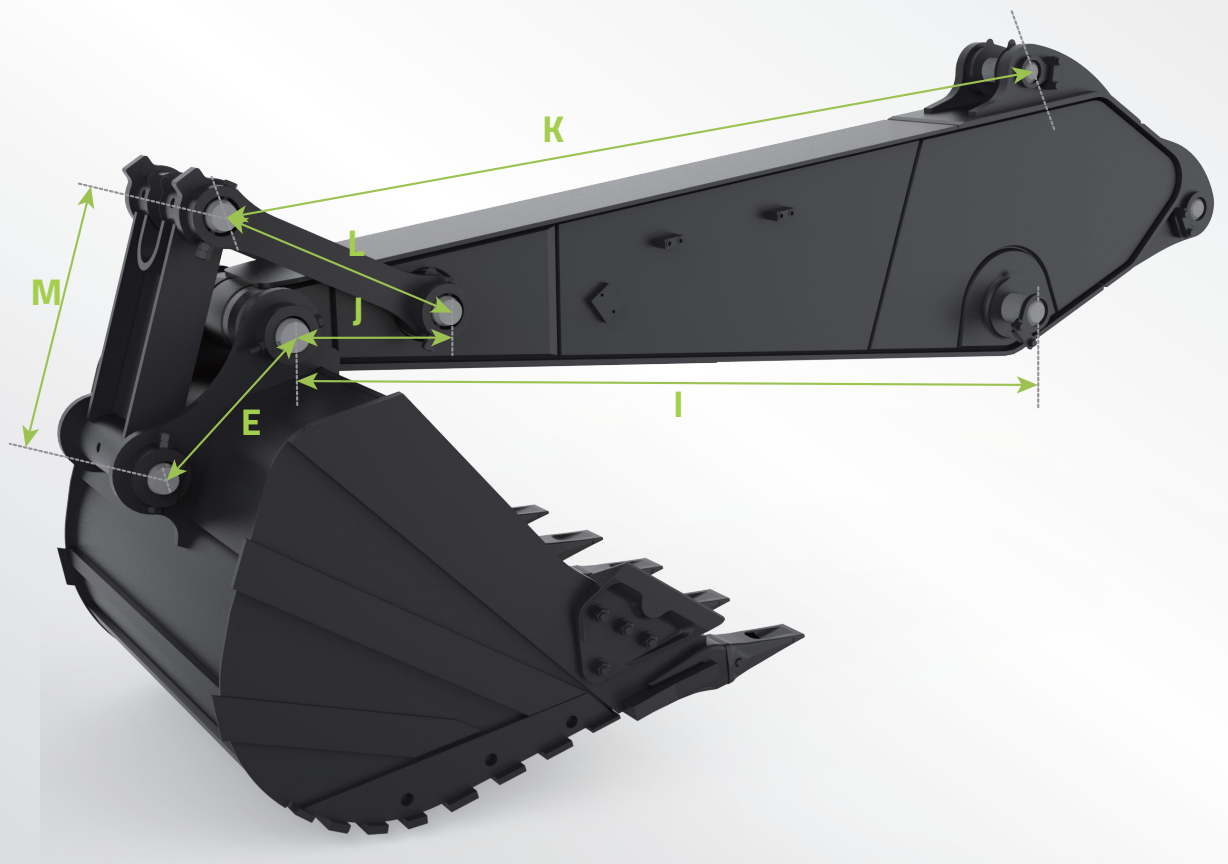


LPH	Rated lift capacity (kg)												
	LPR										Lift capacity at maximum radius		
	1.5m		3.0m		4.5m		6.0m		7.5m				
m	End	Side	End	Side	End	Side	End	Side	End	Side	End	Side	m
7.5											*6126	*6126	7.53
6.0							*7066	6981			*5959	5528	8.44
4.5					*8808	*8808	*7500	6703			*6022	4753	9.01
3.0			*13742	*13742	*9985	9007	*8086	6324	*6971	4614	*6295	4343	9.20
1.5			*15451	12598	*10975	8339	*8614	5965	*7166	4441	*6836	4176	9.32
Grade			*15820	12055	*11441	7901	*8877	57010			*7023	4238	9.05
-1.5	*15577	*15577	*15139	11947	*11246	7717	*8691	5585			*7130	4566	8.62
-3.0	*18028	*18028	*13541	12117	*10252	7773	*7696	5662			*7133	5363	7.81
-4.5	*13625	*13625	*10632	10632	*7895	*7895					*6738	*6738	6.54

Capacities marked with an asterisk (\*) are limited by hydraulic capacities. See Note 2.

- The mass of slings and any auxiliary lifting devices shall be deducted from the rated load to determine the net load that may be lifted.
- Lift capacities are based on the machine standing on a firm, uniform supporting surface. The user shall make allowances for job conditions such as soft or uneven ground.
- The operator should be fully acquainted with the operator's manual and the operating safety manual furnished by the manufacturer before operating fixe machine.
- NOTE 1 Lift capacities shown are without the power boost feature engaged.
- NOTE 2 Lift capacities shown do not exceed 75% of minimum tipping loads or 87% of hydraulic capacities.
- NOTE 3 The least stable position is over the side.
- NOTE 4 Lift capacities apply only to the machine as originally manufactured and normally equipped by the manufacturer.
- NOTE 5 The total mass of the machine is 37.500kg. Included in this mass are 600mm triple grouser shoes, 6.4 m boom, 3.2m arm,5800 kg counterweight, all operating fluids and a 75 kg operator.
- NOTE 6 Lift capacities are in compliance with ISO 10567:2007.





Unit: mm

MODEL	A	B	C	D	E	F	G	H	I
ZE335G	415	415	100	90	530	664	605	26	2900
MODEL	J	K	L	M					
ZE335G	498.7	3155	750	730					