

# 科技中联，匠心相伴 ZOOMLION TECHNOLOGY WITH INGENUITY AND CARE



## 全球领先的挖掘机智能制造工厂

### The world's leading excavator intelligent manufacturing factory

中联智慧产业城土方机械园区拥有行业领先的智能化、柔性化的挖掘机工厂，从一块钢板到一台挖掘机，以高精度的焊接工艺、高可靠的装配工艺、高级别的涂装工艺和严苛的品质管控，让每一台交付的挖掘机都具备极致品质。

Zoomlion Smart City Earthmoving Machinery Park is an industry-leading intelligent and flexible excavator factory. From a piece of steel plate to an excavator, with high-precision welding process, highly reliable assembly process, high-level coating process and strict quality control, each excavator is delivered with ultimate quality.

**ZOOMLION**

Zoomlion Heavy Industry Science & Technology Co.,Ltd.

Add: No.361, South Yipen Road, Changsha, Hunan Province, P.R.China 410013 Email: earthmoving@zoomlion.com  
Copyright©2025 Zoomlion. All rights reserved. Reproduction and copying of any part of contents is not allowed for any purposes without Zoomlion's approval.  
Note: Materials and specifications are subject to change without notice. Featured machines in photos may include additional equipment.



# ZOOMLION 38-TONNAGE CRAWLER HYDRAULIC EXCAVATOR

AFRICAN

中联重科38吨级履带式液压挖掘机

ZE385G Pro GOLD 金矿版

ZE385G Pro AFRICAN 非洲版



**ZOOMLION**



# VISION CREATES FUTURE

思想构筑未来



## **ZE385G Pro GOLD 金矿版**

Engine rated power (发动机功率): 241 kW/2000 rpm  
Operating weight (操作重量): 38000 kg  
Bucket capacity (斗容): 2.0 m<sup>3</sup>

## **ZE385G Pro AFRICAN 非洲版**

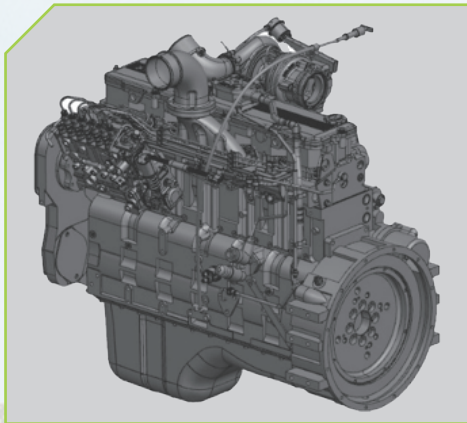
Engine rated power (发动机功率): 241 kW/2000 rpm  
Operating weight (操作重量): 38000 kg  
Bucket capacity (铲斗容量): 2.0-2.2 m<sup>3</sup>



# CONFIGURATION & EFFICIENCY

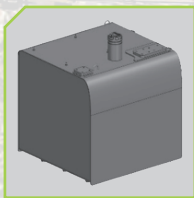
## 配置及效率

### POWERTRAIN 动力系统



- ZE385G Pro GOLD/ZE385G Pro AFRICAN is equipped with CUMMINS engine, which has stronger power, sufficient torque reserve and stable output, large low-speed torque, faster action response and longer service life;
- The electronically controlled negative flow system optimizes engine performance, and improves the responsiveness of actions. The three-stage overall idle control is more energy-saving and efficient, fuel efficiency is improved by more than 7.6%;
- For the Africa, the ZE385G Pro GOLD/ZE385G Pro AFRICAN engine uses a customized engine, making the engine more reliable and durable.
- ZE385G Pro 金矿版/ZE385G Pro 非洲版搭载康明斯发动机，动力更强大，扭矩储备充足且输出平稳，低速扭矩大，动作响应更快，使用寿命更长；
- 电控负流量技术，提升动作响应性，三级怠速控制，更节能高效，燃油效率提高7.6%以上；
- 针对非洲地区工况，ZE385G Pro 金矿版/ZE385G Pro 非洲版发动机使用定制化发动机，使得发动机更可靠更耐用。

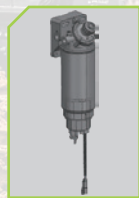
### MULTI STAGE FUEL FILTRATION 多级燃油过滤



Fuel tank  
燃油箱



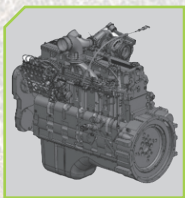
Fuel-water separator  
油水分离器



Primary fuel filter  
燃油粗滤



Secondary fuel filter  
燃油精滤

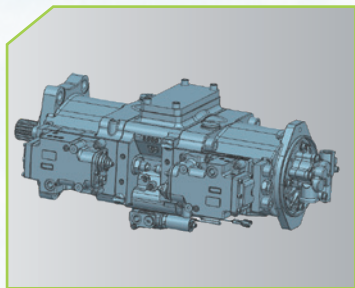


Engine  
发动机

Using a three-stage large-capacity filtration system, the filtration accuracy of the filter element is further improved, and impurity filtration reaches 99.9%. Through multi-stage fuel filtration, the fuel consumption can be reduced obviously.

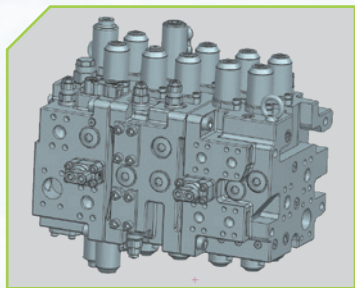
采用三级大容量过滤系统，滤芯过滤精度进一步提升，杂质过滤达到 99.9%。通过多级燃油过滤，显著降低燃油消耗。

### HYDRAULIC SYSTEM 液压系统



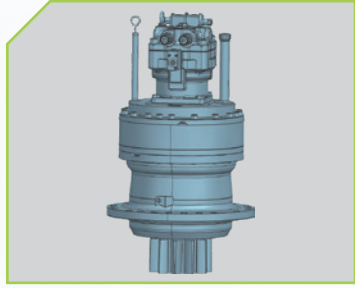
Pump displacement  
increased by **13%**  
排量增大13%

- The product performance is mature, stable and reliable;
- The dual pumps system makes the breaking speed faster.
- The structure is compact, the efficiency is higher and the noise is lower.
- 产品性能成熟、稳定、可靠；
- 双泵合流，破碎速度更快；
- 结构紧凑，效率更高，噪声更低。



Valve diameter  
increased by **14%**  
通径提高14%

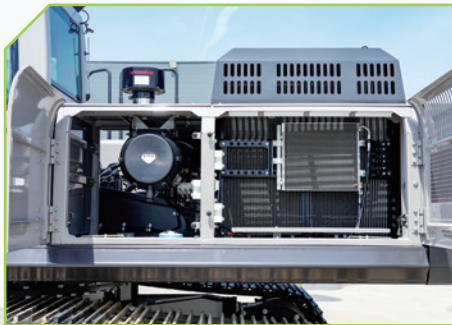
- The diameter of the main valve is increased and the valve spool structure is optimized to reduce the resistance inside the valve, effectively reducing oil channel pressure loss, and improving energy efficiency.
- 主阀通径增大，阀芯结构优化，减小阀内阻力，有效降低油道压力损失，能效提升。



Swing torque  
increased by **21%**  
回转扭矩21%

- Large displacement swing motor, large output torque;
- Mature brand in the industry, high reliability.
- 大排量回转马达，输出扭矩大；
- 行业成熟品牌，可靠性高。

### ADAPTIVE AIR FILTRATION 适应性空气过滤

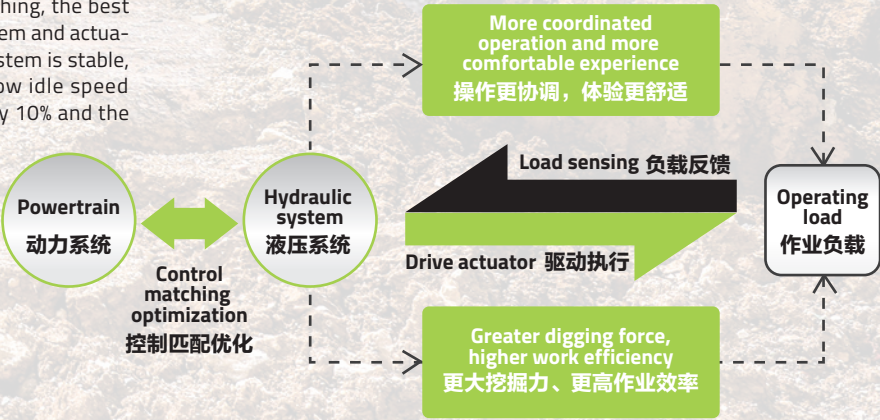


- The air filter with high efficiency and large dust capacity, can effectively protect the engine and ensure long-term operation even in harsh working environments;
- For high dust environments, ZE385G Pro GOLD can be equipped with oil bath air pre-filter;
- In view of the high temperature in Africa, air inlet area of the left door is increased.

- 高效率和大容灰量的空气过滤器，即使在恶劣的工作环境中也能有效地保护发动机，保证长久地工作；
- 针对高粉尘环境，ZE385G Pro 金矿版标配油浴式空气预滤器；
- 针对非洲高温天气，ZE385G Pro 金矿版 / ZE385G Pro 非洲版左门进风面积加大。

### ELAC ELECTRONIC CONTROL SYSTEM ELAC电控系统

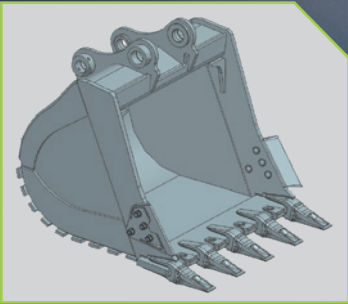
- Through torque matching and flow matching, the best matching of power system, hydraulic system and actuator components is realized. The whole system is stable, reliable and efficient. Combined with low idle speed technology, the efficiency is increased by 10% and the fuel consumption is reduced by 5%.
- 通过扭矩匹配和流量匹配，实现动力系统、液压系统、执行元件的最佳匹配。整机系统的稳定、可靠、高效。并结合低怠速技术，使效率提高10%，油耗降低5%。





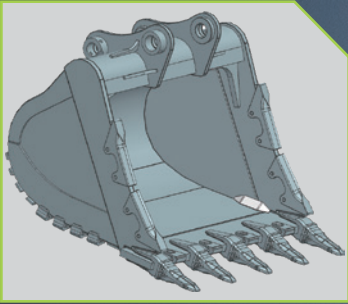
# PERFECT ADAPTABILITY

## 完美适配性



### Earthwork bucket 土方斗

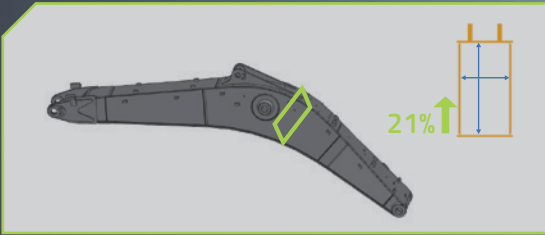
- Large capacity and high efficiency earthwork bucket;
- Loading efficiency is high because soil is hardly stuck on it;
- Durable with enhanced design.
- 大斗容土方斗，斗容大，作业效率高；
- 不易粘斗，装载效率更高；
- 专业强化设计，更耐用。



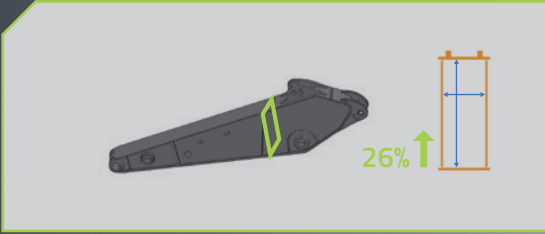
### Rock bucket 岩石斗

- The optional rock bucket is powerful during digging by greatly reducing the cutting resistance of bucket teeth;
- The bucket is more durable by reducing the wear and impact of the rock on the bottom of the bucket.
- 岩石斗，大幅降低斗齿切入阻力，挖掘更有力；
- 降低了岩石对斗底的磨损和冲击，铲斗更耐用。

Model 机型	Boom length 动臂长度	Arm length 斗杆长度	Bucket capacity 铲斗规格	Applicable material density 适用物料密度
ZE385G Pro GOLD 金矿版	6400 mm	2900 mm	2.0 m <sup>3</sup> Rock bucket 岩石斗	1800 kg/m <sup>3</sup>
ZE385G Pro AFRICAN 非洲版	6400 mm	2900 mm	2.0 m <sup>3</sup> Rock bucket 岩石斗	1800 kg/m <sup>3</sup>
			2.2 m <sup>3</sup> Earthwork 土方斗	1600 kg/m <sup>3</sup>



- With the large section and forging support, the boom section has increased by 21%, the arm section has increased by 26%.
- 大截面+锻件支撑座，动臂截面增加21%，斗杆截面增加26%；



- The end of arm is the widest 414mm, and the pin is increased to 100mm, making excavation and breaking more reliable.
- 斗杆“马头”最宽414mm，销轴增加到100mm，挖掘、破碎更可靠；





# PERFECT ADAPTABILITY (GOLD VERSION)

## 完美适配性 (金矿版)



Boom lamp  
动臂灯



Cab headlight  
驾驶室前照灯



Rear lamp  
后照灯



### Multiple searchlights 多数量探照灯

- The ZE385G Pro GOLD/AFRICA comes standard with multiple searchlights offering luminous flux of 1800lm, to ensure perfect vision in the dark and insight into the surrounding environment. Equipped with high-performance boom lamp, it will ensure that customers can clearly observe the front work area and working conditions of bucket and arm. With four cab headlamps, the front road will be more bright and clear, any working conditions fully seen. It provides better operation experience and vision, ensuring the safety of operator. Equipped with rear lamp, there is no need to worry about the operation under any working condition, even when focusing on the front operation, you can also check the rear situation at any time.
- Also, there are highly reliable searchlights with IP69K protection class, which can be perfectly applied in mining area.
- ZE385G Pro 金矿版 / 非洲版标配多个探照灯, 光通量达到 1800lm, 确保客户在黑暗环境下拥有完美视野, 洞察周边环境的一切。高性能动臂灯在黑暗环境中能保证客户清楚观察到前方的工作区域和铲斗、斗杆处的工作情况。四个驾驶室前照灯, 使您的前路更加明亮清晰, 任何工况都能尽收眼底, 操作体验更加优秀, 更好地保障机手的视野和安全。配备后照灯, 保证任何工况下的操作都没有后顾之忧, 即使专注于前方的作业也能随时查看后方的情况。
- 高可靠性探照灯, 防护等级达到 Ip69K, 矿区工况放心使用。



### Front fine mesh protection 前细网格防护

- The cab of ZE385G Pro GOLD/AFRICA is equipped with front fine mesh protection, which provides 100% protection against large sand and gravel splashes without blocking the cab view. More meticulous workmanship and better material ensure the safety of the cab and operator when breaking, providing more reassuring operation and more comfortable experience.
- ZE385G Pro 金矿版 / 非洲版驾驶室配备前细网格防护, 在不阻挡视野的情况下做到针对飞溅的较大沙土碎石的 100% 防护阻拦。更细致的做工和更优秀的材质保证在破碎时驾驶室和操作机手的安全, 操作更安心, 体验更舒适。



### Bucket cylinder inversion 铲斗油缸倒置

- In the working environment of mining area, whether it is when breaking or mineral mining, splashing stones can easily damage hydraulic components. ZE385G Pro GOLD is bucket cylinder inverted design makes the fragile hydraulic components away from the splashes of debris, which achieves better body protection, more suitable for mining conditions and higher equipment reliability.
- 在矿区作业环境下, 不论是破碎还是矿物开采, 飞溅的石块极易使液压元件受损。ZE385G Pro 金矿版的铲斗油缸倒置设计使得脆弱的液压元件远离飞溅的碎块, 做到更好的机体保护, 更能适配矿区工况, 设备可靠性更高。



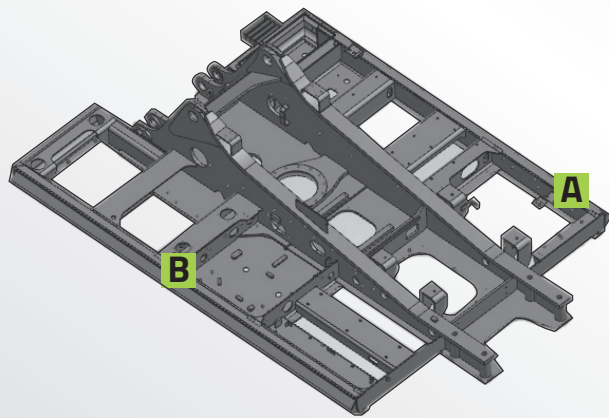
### Two-sides fender 双向刮泥板

- ZE385G Pro GOLD is equipped with two-way mud scraping version, which is well-suited to the mining area with complex working conditions, effectively reducing the accumulation of excavator soil gravel by 15%, and the whole machine has better movement performance and higher reliability.
- ZE385G Pro 金矿版配备双向刮泥板, 很好适应工况复杂的矿区, 有效减少挖机泥土碎石的堆积达 15%, 整机运动表现更好, 可靠性更高。



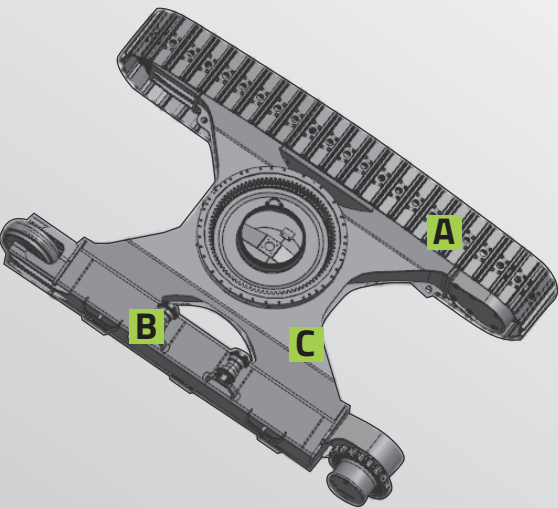
# RELIABILITY & DURABILITY

## 可靠与耐用



**A** The D-shaped side beam of the upper frame has increased plate thickness in key parts, and combined with the anti-collision beam, the overall strength is higher.  
转台D型边梁，关键部位板厚增加，配合防撞梁，整体强度更高。

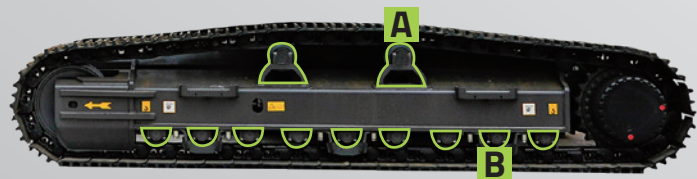
**B** Anti-collision beam  
防撞梁



**A** Standard triple grouser reinforced track  
标配3筋加强型履带

**B** The large slope design of the crawler side beams effectively reduces soil accumulation and ensures smooth traveling.  
履带边梁大边坡设计，有效减少泥土堆积，确保行走顺畅。

**C** The plate thickness of key parts of the undercarriage is increased, the cross-section is enlarged, and the overall strength is increased by more than 10%, making it more suitable for harsh working conditions.  
底盘关键部位板厚增加，截面加大，整体强度提升10%以上，更适应严苛工况。



**B** 385G Pro GOLD/ZE385G Pro AFRICAN: Single side standard with three track guards for better track protection; long crawler base and 9 track rollers on one side for stronger load-bearing capacity and longer life.

385G Pro GOLD/ZE385G Pro AFRICAN: 单侧标配3个夹轨器，履带防护更好；轴距长、单侧9个支重轮，承载能力更强，寿命更长。

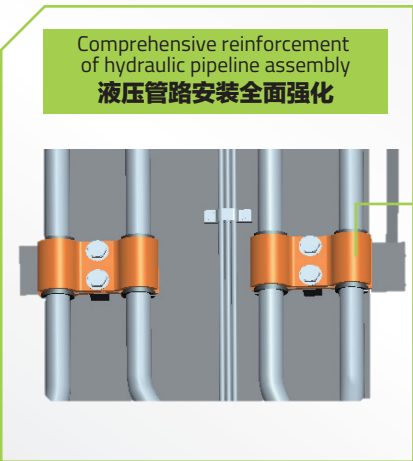
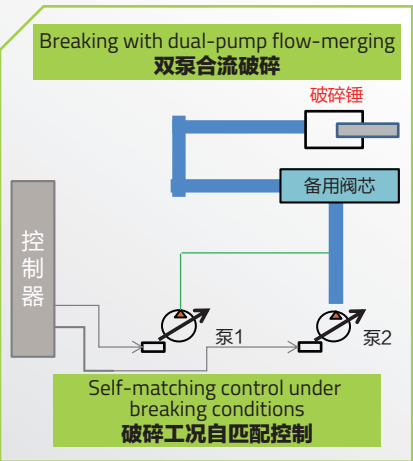


Breaker type 破碎锤类型	Model 机型	Recommended breaker hammer diameter 推荐破碎锤钎锤直径
Top/Side 直型/三角	ZE385G Pro GOLD金矿版/ ZE385G Pro AFRICAN非洲版	165 mm

- The breaker pipeline is optionally equipped while the bucket cylinder in upright position. Equipped with breaking mode working condition self-matching control technology, the breaking efficiency can be increased by over 4%, compared with the previous generation.
- The hydraulic plumbing installation is fully strengthened, and the pipe clamp is widened and thickened, making it more durable.
- 铲斗油缸正置时可选配破碎锤管路。搭载破碎模式工况自匹配控制技术，破碎效率相比上一代机型提升4%以上；
- 液压管路安装全面强化，管夹加宽，加厚，更耐用。

Hammer plumbing mounting seat is reserved before delivery, which is more convenient and reliable compared to that welded upon delivery.

出厂预留破碎管路安装座，相比出厂后加焊的管路安装座，更方便、更可靠。





# COMFORT & INTELLIGENCE

## 舒适与智能



- Large touch screen
- The standard rearview camera
- 大尺寸触摸屏
- 标配后视摄像头



- Push start
- 一键启动



- Cup holder
- 杯托

- USB
- Bluetooth(蓝牙)
- Data Transmission (数据传输)



- Highly integrated control panel
- 高集成化 控制面板



- Special suspension seat of large stroke full wrapping experience
- 大行程专用悬浮座椅全包裹体验



- Compared with the previous generation cab, the cooling effect of the new generation cab is increased by more than 19%
- 新一代驾驶室相比上一代驾驶室，制冷降温效果提高19%以上



- Superb all-round visibility thanks to large window areas, with increased glass transmittance above 11%
- Customers can choose the sunshade
- 大面积环绕式玻璃，玻璃通透率提升11%以上
- 客户可选配遮阳帘



# CONVENIENT MAINTENANCE

维保便捷



Engine air filter monitoring and maintenance are quick and easy, and the operation space is large.

发动机空滤监测与保养均快捷,操作空间大。



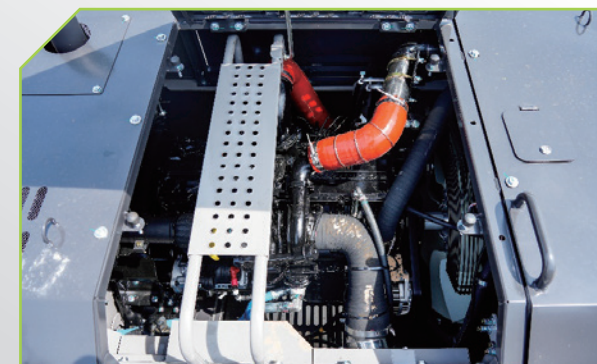
The inspection and maintenance of the oil filter, diesel filter and pilot filter are easily accessible at ground level, realizing one-stop maintenance.

机油滤、柴油滤、先导滤的检视与保养均伸手可及,实现一站式保养。



Add the centralized lubrication function of the swing bearing, to make the maintenance more convenient.

增加回转支承的集中润滑功能,保养更方便。



Engine room space is larger, and inspection, repair, maintenance are more convenient.

发动机舱空间更大,检视、维修、保养更方便。



# CUSTOMER SERVICE

## 客户服务

Zoomlion's service technicians are located in various key countries around the world. According to the distribution of customers' equipment, technicians will be stationed in that country for a long time. If customers need it, our mission will be fulfilled. Every year, Zoomlion's service technicians carry out a service trip to visit new and old customers. We collect reasonable opinions, and listen carefully to customer service requests. We meet the needs of customers in a timely manner and respond to the reasonable needs of customers. We train the operators of each piece of equipment to ensure the stable operation of the equipment.

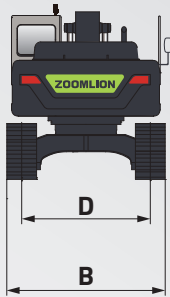
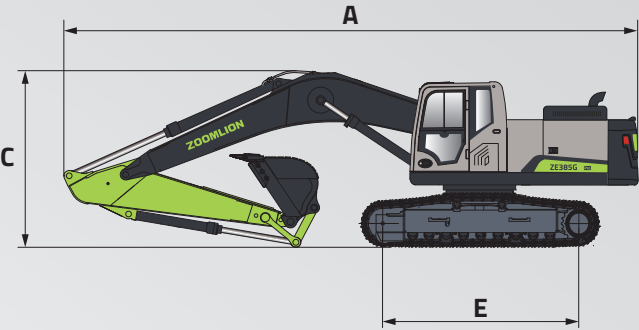
中联重科的服务工程师分布在全球各个重点国家，根据客户设备分布情况，工程师长期驻点该国家，客户有需要，我们使命必达。每年中联重科服务工程师都会开展服务万里行活动，针对新老客户拜访。针对合理性意见进行收集，用心听取客户服务诉求。我们及时满足客户的需求，响应客户合理需求。我们对每台设备的机手都要进行培训，全力保障客户设备稳定运转。



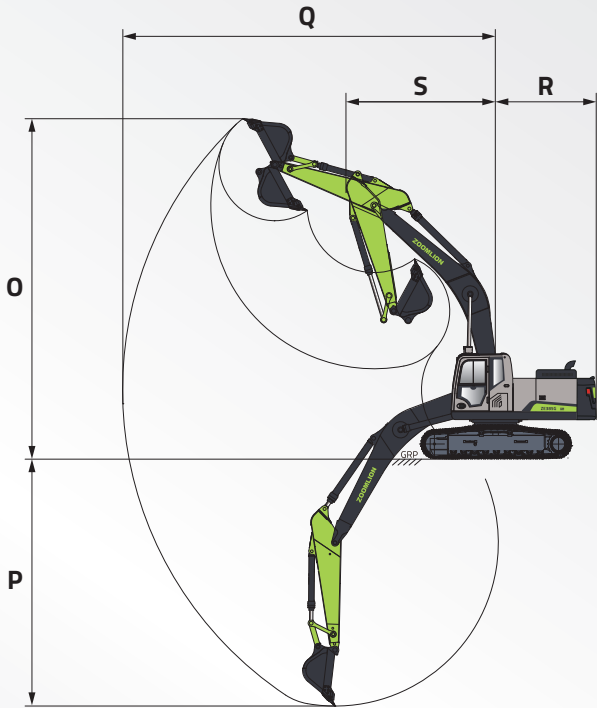


ZE385G Pro GOLD 金矿版 / ZE385G Pro AFRICAN 非洲版	
Engine（发动机）	
Manufacturer品牌	CUMMINS 康明斯
Model型号	6LTAA8.9-C325
Rated power额定功率	241 kW/2000 rpm
Displacement排量	8.9 L
Hydraulic system（液压系统）	
Main pump 主泵	Two variable displacement piston pumps 2个变量柱塞泵 Maximum flow最大流量：2×324 L/min
Pilot pump 先导泵	One gear pump 1个齿轮泵 Maximum flow 最大流量：27 L/min
Oil circuit for work equipment 工作油路	34.3 MPa
Oil circuit for swing device 回转油路	31 MPa
Traveling circuit 行走油路	34.3 MPa
Pilot circuit 先导油路	3.9 MPa
Supercharging mode 增压模式	37.3 MPa
Swing mechanism（回转机械装置）	
Maximum swing speed 最大回转速度	9.6 r/min
Undercarriage（底盘结构）	
Number of carrier rollers (each side) 托链轮数量（每侧）	2 (Two sides supported track rollers) 2（双侧支撑支重轮式）
Number of track rollers (each side) 支重轮数量（每侧）	9
Travel speed (high) 行走速度（高）	5.3 km/h
Travel speed (low) 行走速度（低）	3.0 km/h
Maximum drawbar pull 最大牵引力	350 kN
Gradeability 爬坡能力	70 %
Service refill capacities（维护保养加注容量）	
Fuel tank 燃油箱容积	650 L
Engine coolant 发动机冷却液	42 L
Engine oil 发动机油	28 L
Swing device 回转装置	10.5 L
Traveling device (each side) 行走装置（每侧）	10 L
Hydraulic system 液压系统	300 L
Hydraulic tank 液压油箱	180 L
Work equipment（工作装置）	
Boom length 动臂长度	6400 mm
Arm length 斗杆长度	2900 mm

ZE385G Pro GOLD 金矿版	
Overall dimensions（整机尺寸）	
A Overall length A 总长度	11350mm
B Overall width B 总宽度	3390 mm
C Overall height C 总高度	3780 mm
D Track gauge D 履带轨距	2590 mm
E Crawler base E 履带轴距	4140 mm
Working range（作业范围）	
O Maximum digging height O 最大挖掘高度	10040 mm
P Maximum digging depth P 最大挖掘深度	7039 mm
Q Maximum digging reach Q 最大挖掘距离	10870 mm
R Tail swing radius R 尾部回转半径	3620 mm
S Minimum front swing radius S 前部最小回转半径	4520 mm



ZE385G Pro AFRICAN 非洲版	
Overall dimensions（整机尺寸）	
A Overall length A 总长度	11350 mm
B Overall width B 总宽度	3190 mm
C Overall height C 总高度	3780 mm
D Track gauge D 履带轨距	2590 mm
E Crawler base E 履带轴距	4140 mm
Working range（作业范围）	
O Maximum digging height O 最大挖掘高度	10040 mm
P Maximum digging depth P 最大挖掘深度	7039 mm
Q Maximum digging reach Q 最大挖掘距离	10870 mm
R Tail swing radius R 尾部回转半径	3620 mm
S Minimum front swing radius S 前部最小回转半径	4520 mm





# STANDARD & OPTIONAL EQUIPMENT

## 标配和选配

Classification（分类）	Configuration items（配置项）	ZE385G Pro GOLD 金矿版	ZE385G Pro AFRICAN 非洲版
Engine 发动机	Air filter 空气滤清器	●	●
	Oil bath air pre-filter 油浴式空气预滤器	○	○
Hydraulic System 液压系统	Breaker pipeline (upright bucket cylinder) 破碎锤管路 (铲斗油缸正置)	○	○
Cab 驾驶室	Cab 司机室	●	●
	Front lower fine mesh guard 前下细网格防护	●	●
	Front upper fine mesh guard 前上细网格防护	●	○
	Top guard 顶防护	●	○
	Fire extinguisher 灭火器	●	●
	Mechanical suspension seat 机械悬浮座椅	●	●
	Heating and cooling air conditioning 冷暖空调	●	●
	Ordinary joystick 普通手柄	●	●
Lower Structure 下车	3-rib reinforced steel track 3筋钢履带	●	●
	Track 600mm 履带	○	●
	Track 700mm 履带	○	○
	Track 800mm 履带	●	○
	Carrier rollers (single side) 托链轮（单侧）	●2个 2 pcs	●2个 2 pcs
	Track rollers (single side) 支重轮（单侧）	●9个 9 pcs	●9个 9 pcs
	Lower structure track guard 下车夹轨器（单侧）	●3个 3 pcs	●3个 3 pcs
Electric 电气	Audible and visual alarm 声光报警器	○	○
	Emergency stop switch 急停开关	●	●
	Power interface 24V电源接口	●	●
	Rear view camera 后视摄像头	●	●
	Cab front dome lamp 驾驶室前顶灯	●4个 4 pcs	●2个 2 pcs
	Boom working lamp 动臂工作灯	●4个 4 pcs	●2个 2 pcs
	Upper frame lamp 转台灯	●1个 1 pc	●1个 1 pc
	Counterweight lamp 配重照明灯	○	○
	Refueling pump 燃油加注泵	●	○
	Radio AM/FM收音机	●	●
	GPS	●	●
Attachments 属具	Recommended breaker rod diameter 推荐破碎锤钎杆直径	165 mm	165 mm
	Side-mounted hammer 三角破碎锤	○	○
Others 其他	Cab rearview mirror 驾驶室后视镜	●1个 1 pc	●1个 1 pc
	Handrail rearview mirror 扶手后视镜	●1个 1 pc	●1个 1 pc
	Cylinder sleeve 油缸护套	○	○

- STANDARD 标配
- OPTIONAL 选配

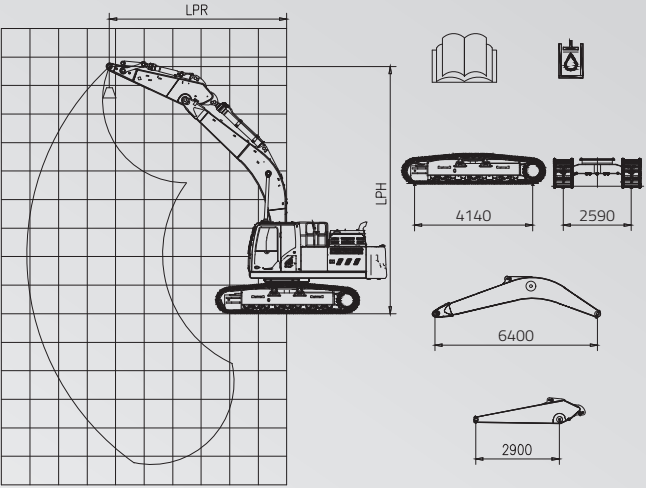
# 起吊能力表

## LIFT CAPACITY

ZE385G Pro GOLD 金矿版  
ZE385G Pro AFRICAN 非洲版

Do not attempt to lift or hold any load that is greater than these rated values at their specified lift-point radius and height.  
The lift point is located at the centreline of the bucket pivot mounting pin on the arm.

在规定的起吊点半径和高度下，不要起吊大于额定值的负载。  
起吊点位于斗杆与铲斗连接的销轴孔中心。



LPH	额定起吊能力（千克） Rated lift capacity (kg)												最大半径处的起吊能力 Lift capacity at maximum radius	
	LPR													
	3.0m		4.5m		6.0m		7.5m		8.5m					
m	纵向 End	侧向 Side	纵向 End	侧向 Side	纵向 End	侧向 Side	纵向 End	侧向 Side	纵向 End	侧向 Side	纵向 End	侧向 Side	m	
7.5m											*5.782	*5.782	7.28	
6.0m							*6.542	*6.542			*5.865	5.736	8.182	
4.5m					*8.549	*8.549	*7.044	6.771			*5.727	4.873	8.784	
3.0m			*14.183	*14.183	*9.854	9.595	*7.697	6.527	*6.413	4.545	*6.096	4.47	9.069	
1.5m			*15.76	14.246	*10.883	9.112	*8.244	6.273	*6.584	4.453	*6.498	4.367	9.084	
0m			*15.855	13.883	*11.291	8.802	*8.483	6.097			*6.614	4.499	8.878	
-1.5m	*12.043	*12.043	*14.943	13.839	*10.978	8.7	*8.174	6.027			*6.722	4.988	8.377	
-3m	*17.287	*17.287	*13.13	*13.13	*9.744	8.773	*6.789	6.108			*6.678	6.05	7.545	
-4.5m	*12.609	*12.609	*9.79	*9.79	*6.765	*6.765					*6.146	*6.146	6.24	

标有星号(\*)的值受液压能力限制，见注2。  
Capacities marked with an asterisk (\*) are limited by hydraulic capacities, see Note 2.

- 吊索和任何辅助起吊装置的重​​量应从额定载荷中扣除，以确定可提升的净载荷。  
The mass of slings and any auxiliary lifting devices shall be deducted from the rated load to determine the net load that may be lifted.
- 起吊能力是基于机器位于坚实的，均匀的支撑表面，使用者应考虑到松软或不平整的地面等工作条件。  
Lift capacities are based on the machine standing on a firm, uniform supporting surface. The user shall make allowances for job conditions such as soft or uneven ground.
- 操作人员在操作机器前，应充分熟悉制造商提供的操作手册和安全手册。  
The operator should be fully acquainted with the *Operator's Manual* and the *Operating Safety Manual* furnished by the manufacturer before operating the machine.

- 注1：所示的起吊能力是没有启用增压模式的。  
NOTE 1 Lift capacities shown are without the power boost feature engaged.
- 注2：所示的起吊能力不超过最小倾翻载荷的75%或液压能力的87%。  
NOTE 2 Lift capacities shown do not exceed 75% of minimum tipping loads or 87% of hydraulic capacities.
- 注3：最不稳定的位置在侧面。  
NOTE 3 The least stable position is over the side.
- 注4：起吊能力仅适用于制造商最初制造并正常配置的机器。  
NOTE 4 Lift capacities apply only to the machine as originally manufactured and normally equipped by the manufacturer.
- 注5:整机总质量为38500/38000kg,包括800/600mm的3筋履带、6.4m的动臂、2.9m的斗杆、所有的工作液体和一个75kg的操作人员。  
NOTE 5 The total mass of the machine is 38500/38000kg :Included in this mass are 800/600mm 3-rib reinforced steel track, 6.4m boom, 2.9m arm, all operating fluids and a 75kg operator.
- 注6：起吊能力符合ISO 10567:2007。  
NOTE 6 Lift capacities are in compliance with ISO 10567:2007.



**VISION  
CREATES  
FUTURE**

