

大智造 HIGH TECH MANUFACTURING

全球领先的全流程智能制造工厂

The world's leading full-process intelligent manufacturing plant



从一块钢板到一台挖掘机，中联智慧产业城土方机械园区拥有行业领先的智能化、柔性化的全流程智能制造挖掘机工厂，以高精度的焊接工艺、高可靠的装备工艺、轿车级别的涂装工艺和严苛的品质管控，让每一台交付的挖掘机都具备极致品质，始终如一

From a steel plate to an excavator, Zoomlion Smart Industry City Earthmoving Machinery Park has an industry-leading intelligent and flexible full-process intelligent manufacturing excavator factory. With high-precision welding process, highly reliable equipment process, car-level coating process and strict quality control, every delivered excavator has the ultimate quality and is consistent

ZOOMLION

Zoomlion Heavy Industry Science & Technology Co.,Ltd.

Add: No.361, South Yipen Road, Changsha, Hunan Province, P.R.China 410013 Email: earthmoving@zoomlion.com
Copyright©2024 Zoomlion. All rights reserved. Reproduction and copying of any part of contents is not allowed for any purposes without Zoomlion's approval.
Note: Materials and specifications are subject to change without notice. Featured machines in photos may include additional equipment.



ZOOMLION ZE335G_{ACE}/ZE385G_{ACE} CRAWLER HYDRAULIC EXCAVATOR

SOUTHEAST ASIA

中联重科ZE335G_{ACE}/ZE385G_{ACE}履带式液压挖掘机



ZOOMLION

VISION CREATES FUTURE

思想构筑未来

ZE335G_{ACE}

Engine rated power (发动机功率) : 212 kW / 2000 rpm
Operating weight (操作重量) : 33500 kg
Bucket capacity (斗容) : 1.6-1.9 m³

ZE385G_{ACE}

Engine rated power (发动机功率) : 212 kW / 2000 rpm
Operating weight (操作重量) : 38000 kg
Bucket capacity (斗容) : 1.6-2.2 m³



CONFIGURATION & EFFICIENCY

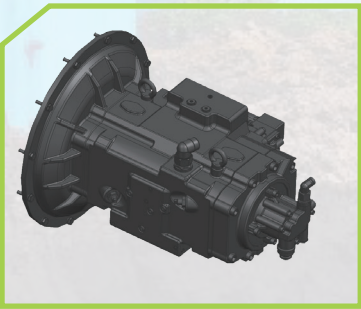
配置与效率

POWER SYSTEM

动力系统



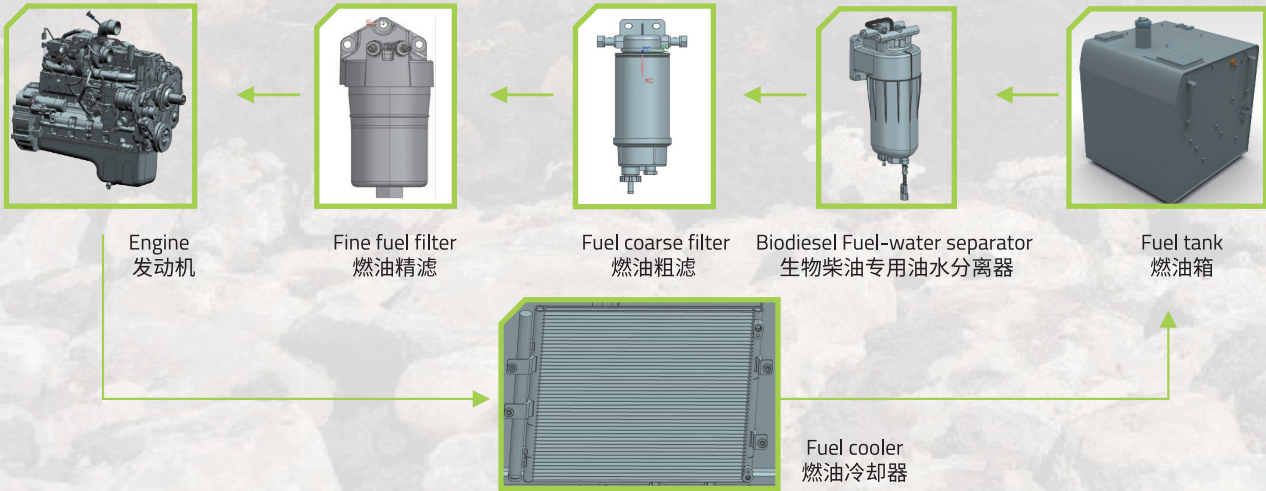
- ZE335GACE/ZE385GACE is equipped with Isuzu engine**
ZE335GACE/ZE385GACE 搭载五十铃发动机
- Stronger power, sufficient torque reserve and stable output, large low-speed torque, faster action response and longer service life.
 - The electronic control system optimizes engine performance, and three-stage overall speed control improves fuel efficiency by more than 10%.
- 强劲动力，扭矩储备充足且输出平稳、低速扭矩大，动作响应更快，使用寿命更长。
电控系统优化发动机性能，三级怠速控制，燃油效率提高 10% 以上。



- ZE335GACE/ZE385GACE equipped with Zoomlion main pump**
ZE335GACE/ZE385GACE 搭载中联重科主泵
- 180 cc Large displacement pump, which can deliver high flow at low speed, ensuring efficiency while reducing fuel consumption.
- 180 cc 大排量主泵，低转速下即可输出高流量，保证效率的同时降低了油耗。

MULTI STAGE FUEL FILTRATION

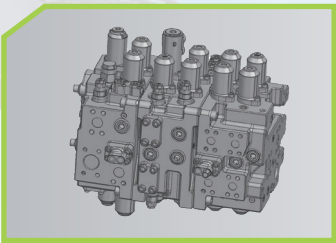
多级燃油过滤



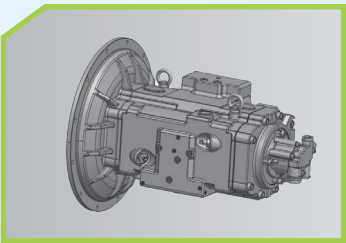
- Using a three-stage large-capacity filtration system, the filtration accuracy of the filter element is further improved, impurity filtration reaches 99.9%, and a fuel cooler is used to accurately control the fuel temperature, so that the engine is always in the best condition, extending the engine life and reducing fuel consumption.
- 采用三级大容量过滤系统，滤芯过滤精度进一步提升，杂质过滤达到 99.9%，并且使用燃油冷却器，精准控制燃油温度，使发动机始终处于最佳状态，提升了发动机寿命的同时，降低了燃油消耗。

HYDRAULIC SYSTEM

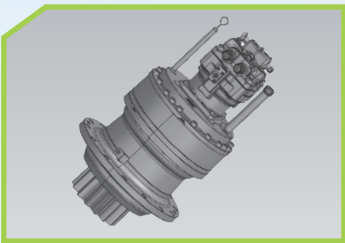
液压系统



- ↑ 通径提高 **14%**
- The diameter of the main valve is increased and the spool structure is optimized to reducing the friction between the hydraulic oil and the plumbing, effectively reducing the oil duct pressure loss, and improving energy efficiency.
- 主阀通径增大，阀芯结构优化，减小液压油与管路通道的摩擦力，有效降低油道压力损失，能效提升；



- ↑ 排量增大 **13%**
- The product performance is mature, stable and reliable;
 - The flow and pressure of the dual pumps are greatly improved, and the breaking speed is faster;
 - The structure is compact, the efficiency is higher and the noise is lower.
- 产品性能成熟、稳定、可靠；
双泵流量、压力大大提高，破碎速度更快；
结构紧凑，效率更高，噪声更低；



- Large displacement rotary motor, large output torque;
 - Mature brand in the industry, high reliability.
- 大排量回转马达，输出扭矩大；
行业成熟品牌，可靠性高；

E-COT CONTROL SYSTEM (ELECTRONICALLY CONTROLLED POSITIVE FLOW CONDITION SELF-OPTIMIZING CONTROL)

E-COT控制系统(电控正流量工况自寻优控制)



Zoomlion's patented positive flow condition self-optimizing control system

中联专利正流量工况自寻优控制系统

- E-CoT™(Excavator Condition Auto-Optimization Technology):**
The controller collects joystick action pressure and load analysis, and cooperates with self-learning control technology to optimally match torque and flow, reduce energy loss, improve machine controllability and fuel efficiency.
- E-CoT™(Excavator Condition Auto-Optimization Technology) 通过控制器采集操作手柄动作压力和负载分析，配合自学习控制技术，对扭矩和流量进行最优匹配，减少能量损失，提高整机操控性和燃油效率性。

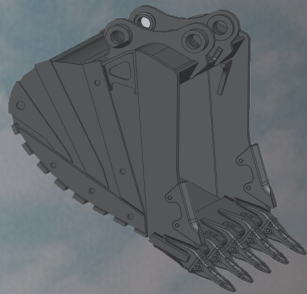
ADAPTABILITY IMPROVEMENT

完美适配性



Standard large capacity earthwork bucket;
Loading efficiency is high because soil is hardly stuck on it;
Durable with enhanced design;
Can be equipped with rock teeth for higher abrasion resistance.

土方斗，斗容大，作业效率高；
不易粘斗，装载效率更高；
专业强化设计，更耐用；
可配岩石斗齿，耐磨性更好。

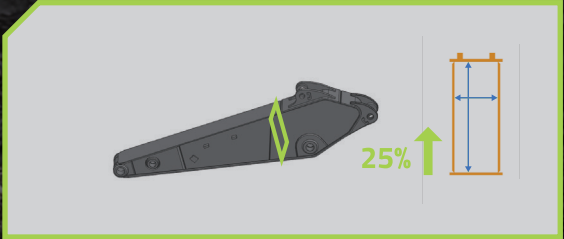
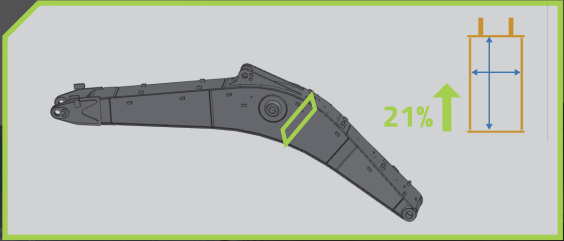


The optional rock bucket is powerful during digging by greatly reducing the cutting resistance of bucket teeth;
The bucket is more durable by reducing the wear and impact of the rock on the bottom of the bucket. The stability of the whole machine is improved, and the operation is more comfortable.

岩石斗，大幅降低斗齿切入阻力，挖掘更有力；
降低了岩石对斗底的磨损和冲击，铲斗更耐用，提升了整机的稳定性，操作更舒适。

Bucket type 铲斗类型	Capacity(m³) 铲斗容量	Model 机型	Applicable material density (kg/m³) 适用物料密度	Advice for choice 选择建议
Rock bucket 岩石斗	2.0m³	ZE385GACE	1800	It is suitable for excavation and loading operations of abrasive materials such as sub-hard rock, weathered stone, blasted ore, etc. 适用于次坚石、风化石、爆破后的矿石等有磨损物料挖掘装载作业。
	1.6m³	ZE335GACE		
Earthwork bucket 土方斗	2.2m³	ZE385GACE	1500	It is suitable for excavation and loading operations of relatively light bulk materials such as ordinary soil, clay, sand, and loam mixed with stones. 适用于混有石子的普通土、黏土、沙土、腐殖土等较松散物料挖掘装载作业。
	1.9m³	ZE335GACE		

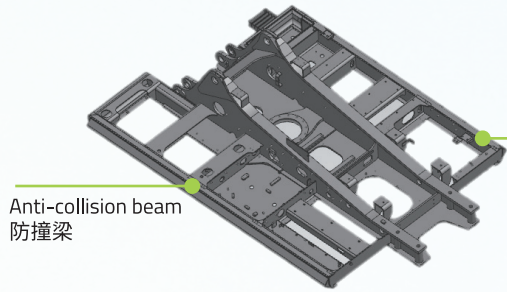
- ZE335GACE large-section + forging support work equipment, compared with the previous generation model, the boom section has increased by 21%, the arm section has increased by 26%,.
- The "End of stick" of the ZE335GACE bucket arm is the widest 414mm, and the pin roll is lengthened from 90mm to 100mm, making excavation and breaking more reliable.
- ZE385GACE large-section + forging support working equipment. Compared with the previous generation model, the boom section has increased by 21%, the arm section has increased by 25%,.
- The "End of stick" of the ZE385GACE bucket arm is the widest 414mm, and the pin shaft is lengthened from 90mm to 100mm, making excavation and breaking more reliable



ZE335GACE大截面+锻件支撑座，相比上一代机型，动臂截面增加21%，斗杆截面增加26%；
ZE335GACE斗杆“马头”最宽414mm，销轴由90mm增加到100mm，挖掘、破碎更可靠；
ZE385GACE大截面+锻件支撑座，相比上一代机型，动臂截面增加21%，斗杆截面增加25%；
ZE385GACE斗杆“马头”最宽414mm，销轴由90mm增加到100mm，挖掘、破碎更可靠；

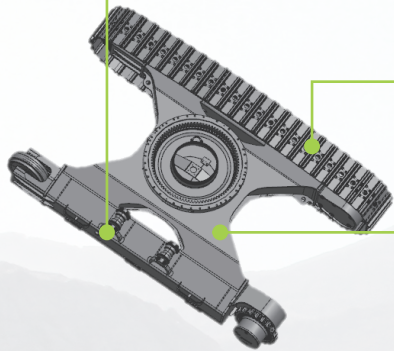
RELIABILITY & DURABILITY

可靠与耐用



The D-shaped side beam of the upper frame has increased plate thickness in key parts, and combined with the anti-collision beam, the overall strength is higher.

转台D型边梁, 关键部位板厚增加, 配合防撞梁, 整体强度更高;



The large slope design of the crawler side beams effectively reduces soil accumulation and ensures smooth traveling. 履带边梁大边坡设计, 有效减少泥土堆积, 确保行走顺畅

Standard 3-rib reinforced track
标配3筋加强型履带

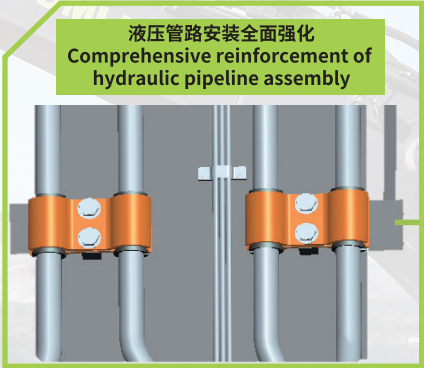
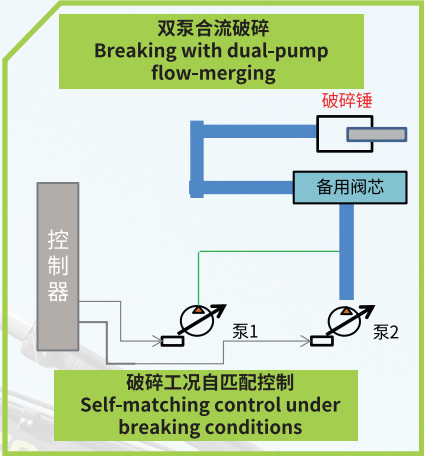
The plate thickness of key parts of the undercarriage is increased, the cross-section is enlarged, and the overall strength is increased by more than 10%, making it more suitable for harsh working conditions. 底盘关键部位板厚增加, 截面加大, 整体强度提升 10% 以上, 更适应严苛工况。

The track roller is used as a carrier roller and is supported on both sides, with higher bending and torsion resistance. 支重轮用作拖链轮, 且双边支撑, 抗弯抗扭能力更高。



ZE385GACE: Standard 3 track guide for better track protection; long crawler base and 9 supported track rollers on one side for stronger load-bearing capacity and longer life.
ZE335GACE: Standard 2 track guide, 8 supported rollers on one side, long wheelbase, stronger load-bearing capacity and longer life.

ZE385GACE: 标配 3 个夹轨器, 履带防护更好; 单侧 9 个支重轮, 轴距长, 承载能力更强, 寿命更长。
ZE335GACE: 标配 2 个夹轨器; 单侧 8 个支重轮, 轴距长, 承载能力更强, 寿命更长。



Breaker type 破碎锤类型	Model 机型	Recommended breaker drill rod diameter 推荐破碎锤杆直径
Top/Side	ZE385GACE	165mm
	ZE335GACE	155mm

- The breaking pipeline is equipped with breaking mode working condition self-matching control technology, which increases the breaking efficiency by more than 4%;
- The hydraulic pipeline installation is fully strengthened, and the pipe clamp is widened and thickened, making it more durable;
- The factory reserved breaking pipeline installation seat is more convenient and reliable compared to the pipeline installation seat welded after leaving the factory.

选配破碎管路, 搭载破碎模式工况自匹配控制技术, 破碎效率相比上一代机型提升 4% 以上;
液压管路安装全面强化, 管夹加宽, 加厚, 更耐用;
出厂预留破碎管路安装座, 相比出厂后加焊的管路安装座, 更方便、更可靠。



COMFORT & INTELLIGENCE

舒适与智能



Large touch screen
Standard rear view camera
大规模触摸屏
标配后视摄像头



Push start
一键启动



Cup holder
杯托

- USB
- Bluetooth(蓝牙)
- Data Transmission (数据传输)



Highly integrated control panel
高集成化 控制面板



Special suspension seat of large stroke
full wrapping experience
大行程专用悬浮座椅全包裹体验



Compared with the previous generation cab, the cooling effect of the new generation cab is increased by more than 19%
新一代驾驶室相比上一代驾驶室，制冷降温效果提高19%以上



Superb all-round visibility thanks to large window areas, with increased glass transmittance above 11%
Customers can choose the sunshade
大面积环绕式玻璃玻璃通透率提升11%以上
客户可以选配遮阳帘

CONVENIENT MAINTENANCE 维保便捷



The engine air filter monitoring is convenient, maintenance is fast, and the operating space is large.
发动机空滤监测方便、保养快捷，操作空间大。



The inspection and maintenance of the oil filter, diesel filter and pilot filter are all within easy reach, realizing one-stop maintenance.
机油滤、柴油滤、先导滤的检视与保养均伸手可及，实现一站式保养。



Added with the centralized lubrication function of the swing bearing to make maintenance more convenient.
采用回转支承集中润滑功能，保养更方便。



The engine compartment has a larger space, and the hood adopts a three-stage hinge opening and closing mechanism, making inspection, repair and maintenance more convenient.
发动机舱空间更大、机罩采用三段铰链开关式，检视、维修、保养更方便。

CUSTOMER SERVICE

售后服务

Zoomlion's service engineers are located in various key cot; around the world, According to the distribution of customer! equipment engineers will be stationed in that country for a long time.If customers need it, our mission wi be fulfilled. Ever year, Zoomlion 's service engineers carry out a service trip to visit new and old customers We collect reasonable opinions, and listen carefully to customer service requests We meet the needs of customers in a timely manner and respond to the reasonable needs of customers We train the operators of each piece of equipment to ensure the stable operation of the equipmen

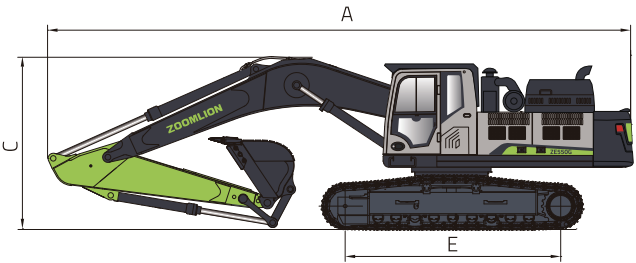
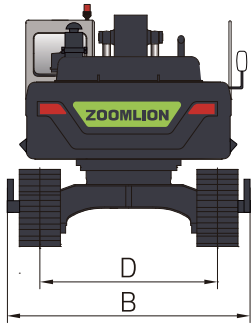
中联重科的服务工程师分布在全球各个重点国家,根据客户设备分布情况,工程师长期驻点该国家,客户有需要,我们使命必达。每年中联重科服务工程师都会开展服务万里行活动,针对新老客户拜访。针对合理性意见进行收集,用心听取客户服务诉求。我们及时满足客户的需求,响应客户合理需求。我们对每台设备的机手都要进行培训,全力保障客户设备稳定运转。



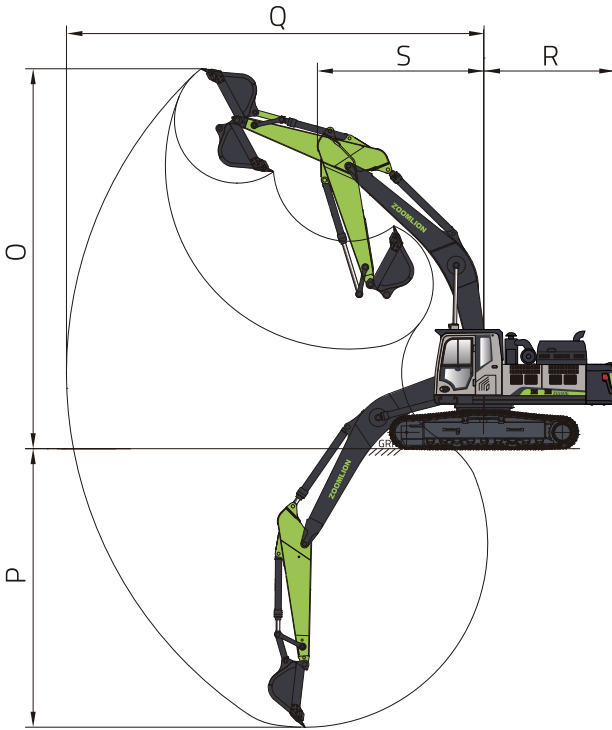
ZE335G _{ACE}	
Engine (发动机)	
Manufacture品牌	ISUZU 五十铃
Model型号	6HK1XDEAA-01
Rated power额定功率	212 kW/2000 rpm
Displacement排量	7.79 L
Hydraulic system (液压系统)	
Main pump主泵	Two variable displacement piston pumps 2个变量柱塞泵 Maximum flow最大流量: 2×315 L/min
Pilot pump先导泵	One gear pump 1个齿轮泵 Maximum flow最大流量: 26.25 L/min
Maximum pressure - Equipment 工作油路	34.3 MPa
Maximum pressure - Swing 回转油路	31 MPa
Maximum pressure - Travel 行走油路	34.3 MPa
Maximum pressure – Pilot system 先导油路	3.9 MPa
Maximum pressure - Boost 增压模式	37.3 MPa
Undercarriage (底盘结构)	
Number of carrier rollers (each side) 托链轮数量 (每侧)	2 (Two sides supported track rollers) 2 (双侧支撑支重轮式)
Number of track rollers (each side) 支重轮数量 (每侧)	8
Travel speed (high) 行走速度 (高)	5.6 km/h
Travel speed (low) 行走速度 (低)	3.6 km/h
Maximum drawbar pull 最大牵引力	266 kN
Gradeability 爬坡能力	70%
Swing Mechanism (回转平台)	
Maximum swing speed 最大回转速度	10.5 r/min
Service refill capacities (维护保养加注容量)	
Fuel tank 燃油箱容积	650 L
Engine coolant 发动机冷却液	48 L
Engine oil 发动机油	36 L
Swing device 回转装置	10.5 L
Traveling device (each side) 行走装置 (每侧)	9.5 L
Hydraulic system 液压系统	300 L
Hydraulic tank 液压油箱	180 L
Work equipment (工作装置)	
Boom length 动臂长度	6150 mm
Arm length 斗杆长度	2900 mm

ZE385G _{ACE}	
Engine (发动机)	
Manufacture品牌	ISUZU 五十铃
Model型号	6HK1XDEAA-01
Rated power额定功率	212 kW/2000 rpm
Displacement排量	7.79L
Hydraulic system (液压系统)	
Main pump主泵	Two variable displacement piston pumps 2个变量柱塞泵 Maximum flow最大流量: 2×324 L/min
Pilot pump先导泵	One gear pump 1个齿轮泵 Maximum flow最大流量: 27 L/min
Maximum pressure - Equipment 工作油路	34.3 MPa
Maximum pressure - Swing 回转油路	31 MPa
Maximum pressure - Travel 行走油路	34.3 MPa
Maximum pressure – Pilot system 先导油路	3.9 MPa
Maximum pressure - Boost 增压模式	37.3 MPa
Undercarriage (底盘结构)	
Number of carrier rollers (each side) 托链轮数量 (每侧)	2 (Two sides supported track rollers) 2 (双侧支撑支重轮式)
Number of track rollers (each side) 支重轮数量 (每侧)	9
Travel speed (high) 行走速度 (高)	5.2 km/h
Travel speed (low) 行走速度 (低)	3.1 km/h
Maximum drawbar pull 最大牵引力	320 kN
Gradeability 爬坡能力	70%
Swing Mechanism (回转平台)	
Maximum swing speed 最大回转速度	10.6 r/min
Service refill capacities (维护保养加注容量)	
Fuel tank 燃油箱容积	650L
Engine coolant 发动机冷却液	48 L
Engine oil 发动机油	36 L
Swing device 回转装置	10.5 L
Traveling device (each side) 行走装置 (每侧)	10 L
Hydraulic system 液压系统	300 L
Hydraulic tank 液压油箱	180 L
Work equipment (工作装置)	
Boom length 动臂长度	6400 mm
Arm length 斗杆长度	2900 mm

ZE335G _{ACE}	
Overall dimension (整机尺寸)	
A Overall length A 总长度	10960 mm
B Overall width B 总宽度	3190 mm
C Overall height C 总高度	3790 mm
D Track gauge D 履带轨距	2590 mm
E Crawler base E 履带轴距	3930 mm
Working range (作业范围)	
O Maximum digging height O 最大挖掘高度	9740 mm
P Maximum digging depth P 最大挖掘深度	6940 mm
Q Maximum digging reach Q 最大挖掘距离	10625 mm
R Rear swing radius R 尾部回转半径	3500 mm
S Front minimum swing radius S 前部最小回转半径	4390 mm



ZE385G _{ACE}	
Overall dimension (整机尺寸)	
A Overall length A 总长度	11230 mm
B Overall width B 总宽度	3190 mm
C Overall height C 总高度	3780 mm
D Track gauge D 履带轨距	2590 mm
E Crawler base E 履带轴距	4140 mm
Working range (作业范围)	
O Maximum digging height O 最大挖掘高度	10010 mm
P Maximum digging depth P 最大挖掘深度	7075 mm
Q Maximum digging reach Q 最大挖掘距离	10870 mm
R Rear swing radius R 尾部回转半径	3500 mm
S Front minimum swing radius S 前部最小回转半径	4525 mm



STANDARD & OPTIONAL EQUIPMENT

标选配

Classification (分类)	Configuration items (配置项)	ZE335GACE	ZE385GACE
Engine 发动机	Air filter 空气滤清器	●	●
	Swirl type air pre-filter 旋流式空气预滤器	●	●
	Oil bath air pre-filter 油浴式空气预滤器	○	○
Hydraulic System 液压系统	Breaker pipeline 破碎锤管路	○	○
Cab 驾驶室	Cab 司机室	●	●
	FOPS	○	○
	ROPS	○	○
	Grid protection 栅格式防护	○	○
	Front lower fine mesh protection 前下细网格防护	○	●
	Front upper fine mesh protection 前上细网格防护	○	○
	Top protection 顶防护	○	○
	Fire extinguisher 灭火器	●	●
	Mechanical suspension seat 机械悬浮座椅	●	●
	Heating and cooling air conditioning 冷暖空调	●	●
	Ordinary joystick 普通手柄	●	●
Undercarriage 下车	3-rib reinforced steel track 3筋钢履带	●	●
	Track 600mm 履带	●	●
	Track 700mm 履带	○	○
	Track 800mm 履带	○	○
	Carrier rollers (each side) 托链轮 (单侧)	●2 pieces	●2 pieces
	Track rollers (each side) 支重轮 (单侧)	●8 pieces	●9 pieces
	Undercarriage rail clamp 下车夹轨器 (单侧)	●2 pieces	●3 pieces
Electric 电气	Audible and visual alarm 声光报警器	○	○
	Emergency stop switch 急停开关	●	●
	power interface 24V电源接口	●	●
	Rear view camera 后视摄像头	●	●
	Cab front dome light 驾驶室前顶灯	●2 pieces	●2 pieces
	Boom work light 动臂工作灯	●2 pieces	●2 pieces
	Upper frame light 转台灯	●1 piece	●1 piece
	Fuel filling pump 燃油加注泵	○	○
	Radio AM/FM收音机	●	●
Attachments 属具	Recommended breaker rod diameter 推荐破碎锤钎杆直径	155 mm	165 mm
	Side-mounted breaker 三角破碎锤	○	○
	Top-mounted breaker 直形破碎锤	○	○
Others 其他	Cab rearview mirror 驾驶室后视镜	●1 piece	●1 piece
	Handrail rear mirror 扶手后视镜	●1 piece	●1 piece

STANDARD 标配 ●

OPTIONAL 选配 ○



属具 ATTACHMENTS

挖掘机通过安装不同的属具可扩展出不同的功能, 进一步提高工作效率。

Excavators can be used for different functions by installing different attachments, further improving efficiency.

安装中联重科提供的属具, 可获得更好的稳定性与性能。

Better stability and performance can be achieved by installing ZOOMLION attachments.

Side-mounted hammer
三角破碎锤



Top-mounted hammer
直型破碎锤



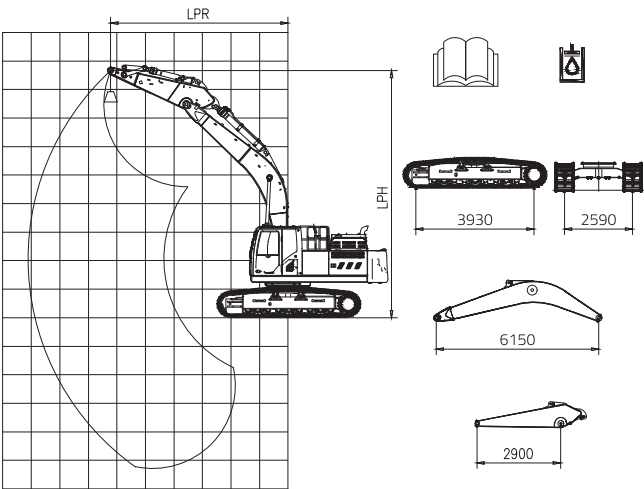
更多可用属具, 请联系中联重科。

Please contact with ZOOMLION for more available attachments.

起吊能力表
LIFT CAPACITY

ZE335GACE

Do not attempt to lift or hold any load that is greater than these rated values at their specified lift-point radius and height.
The lift point is located at the centreline of the bucket pivot mounting pin on the arm.
在规定的起吊点半径和高度下, 不要起吊大于额定值的负载。
起吊点位于铲斗在斗杆上安装销轴的中心



LPH	额定起吊能力 (kg) Rated lift capacity (kg)												
	LPR										最大半径处的起吊能力 Lift capacity at maximum radius		
	3.0m		4.5m		6.0m		7.5m		8.5m				
m	纵向 End	侧向 Side	纵向 End	侧向 Side	纵向 End	侧向 Side	纵向 End	侧向 Side	纵向 End	侧向 Side	纵向 End	侧向 Side	m
7.5											*7022	*7022	6.90
6.0							*7687	6400			*6724	5838	7.89
4.5			*11444	*11444	*9178	8887	*8004	6234			*6736	5043	8.49
3.0			*13962	12730	*10339	8358	*8539	5983	7168	4910	6776	4638	8.80
1.5			*15746	11854	*11325	7889	8477	5734	7012	4766	6606	4492	8.84
Grade			*16108	11478	11601	7594	8289	5562	6909	4670	6774	4583	8.62
-1.5	*15306	*15306	*15373	11429	11478	7486	8224	5503			7374	4969	8.11
-3.0	*17898	*17898	*13582	11572	*10316	7558					7912	5867	7.26
-4.5	*12981	*12981	*10199	*10199							7305	*7305	5.91

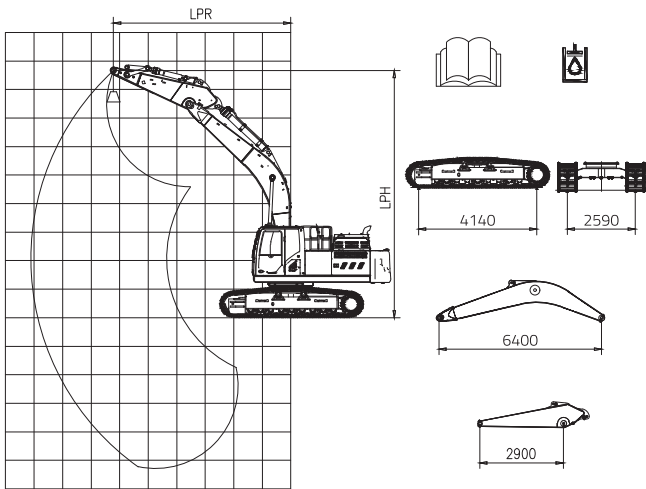
标有星号(*)的值受液压能力限制, 见注2。
Capacities marked with an asterisk (*) are limited by hydraulic capacities. See Note 2.

- 吊索和任何辅助起吊装置的重量的应从额定载荷中扣除, 以确定可提升的净载荷。
The mass of slings and any auxiliary lifting devices shall be deducted from the rated load to determine the net load that may be lifted.
- 起吊能力是基于机器位于坚实的, 均匀的支撑表面, 使用者应考虑到松软或不平整的地面等工作条件。
Lift capacities are based on the machine standing on a firm, uniform supporting surface. The user shall make allowances for job conditions such as soft or uneven ground.
- 操作人员在操作机器前, 应充分熟悉制造商提供的操作手册和安全手册。
The operator should be fully acquainted with the Operator's Manual and the Operating Safety Manual furnished by the manufacturer before operating the machine.
- 注1: 所示的起吊能力是没有启用增压模式的。
NOTE 1 Lift capacities shown are without the power boost feature engaged.
- 注2: 所示的起吊能力不超过最小倾翻载荷的75%或液压能力的87%。
NOTE 2 Lift capacities shown do not exceed 75% of minimum tipping loads or 87% of hydraulic capacities.
- 注3: 最不稳定的位置在侧面。
NOTE 3 The least stable position is over the side.
- 注4: 起吊能力仅适用于制造商最初制造并正常配置的机器。
NOTE 4 Lift capacities apply only to the machine as originally manufactured and normally equipped by the manufacturer.
- 注5: 整机总质量为33500kg, 包括600mm的三筋履带、6.15m的动臂、2.9m的斗杆、5800kg的配重、所有的工作液体和一个75kg的操作人员。
NOTE 5 The total mass of the machine is 33500kg. Included in this mass are 600mm triple grouser shoes, 6.15m boom, 2.9m arm, 5800kg counterweight, all operating fluids and a 75kg operator.
- 注6: 起吊能力符合ISO 10567:2007。
NOTE 6 Lift capacities are in compliance with ISO 10567:2007.

起吊能力表
LIFT CAPACITY

ZE385GACE

Do not attempt to lift or hold any load that is greater than these rated values at their specified lift-point radius and height.
The lift point is located at the centreline of the bucket pivot mounting pin on the arm.
在规定的起吊点半径和高度下, 不要起吊大于额定值的负载。
起吊点位于铲斗在斗杆上安装销轴的中心



LPH	额定起吊能力 (kg) Rated lift capacity (kg)												
	LPR										最大半径处的起吊能力 Lift capacity at maximum radius		
	3.0m		4.5m		6.0m		7.5m		9.0m				
m	纵向 End	侧向 Side	纵向 End	侧向 Side	纵向 End	侧向 Side	纵向 End	侧向 Side	纵向 End	侧向 Side	纵向 End	侧向 Side	m
7.5											*7526	*7526	7.28
6.0							*7913	7197			*7233	6119	8.21
4.5			*12383	*12383	*9701	*9701	*8322	6957			*7279	5333	8.78
3.0			*15015	13962	*10910	9237	*8896	6639	*7750	4982	*7755	4990	8.99
1.5			*16610	12986	*11877	8692	*9407	6346	*7883	4852	*7795	4771	9.10
Grade			*16726	12644	*12279	8367	*9617	6140			*7904	4870	8.87
-1.5	*15279	*15279	*15822	12619	*11952	8247	*9321	6079			*7966	5260	8.38
-3.0	*17990	*17990	*13980	12808	*10763	8362	*7984	6205			*7879	6160	7.55
-4.5	*13255	*13255	*10689	*10689	*7872	*7872					*7285	*7285	6.25

标有星号(*)的值受液压能力限制, 见注2。
Capacities marked with an asterisk (*) are limited by hydraulic capacities. See Note 2.

- 吊索和任何辅助起吊装置的重量的应从额定载荷中扣除, 以确定可提升的净载荷。
The mass of slings and any auxiliary lifting devices shall be deducted from the rated load to determine the net load that may be lifted.
- 起吊能力是基于机器位于坚实的, 均匀的支撑表面, 使用者应考虑到松软或不平整的地面等工作条件。
Lift capacities are based on the machine standing on a firm, uniform supporting surface. The user shall make allowances for job conditions such as soft or uneven ground.
- 操作人员在操作机器前, 应充分熟悉制造商提供的操作手册和安全手册。
The operator should be fully acquainted with the Operator's Manual and the Operating Safety Manual furnished by the manufacturer before operating the machine.
- 注1: 所示的起吊能力是没有启用增压模式的。
NOTE 1 Lift capacities shown are without the power boost feature engaged.
- 注2: 所示的起吊能力不超过最小倾翻载荷的75%或液压能力的87%。
NOTE 2 Lift capacities shown do not exceed 75% of minimum tipping loads or 87% of hydraulic capacities.
- 注3: 最不稳定的位置在侧面。
NOTE 3 The least stable position is over the side.
- 注4: 起吊能力仅适用于制造商最初制造并正常配置的机器。
NOTE 4 Lift capacities apply only to the machine as originally manufactured and normally equipped by the manufacturer.
- 注5: 整机总质量为38000kg, 包括600mm的三筋履带、6.4m的动臂、2.9m的斗杆、7200kg的配重、所有的工作液体和一个75kg的操作人员。
NOTE 5 The total mass of the machine is 38000kg. Included in this mass are 600mm triple grouser shoes, 6.4m boom, 2.9m arm, 7200kg counterweight, all operating fluids and a 75kg operator.
- 注6: 起吊能力符合ISO 10567:2007。
NOTE 6 Lift capacities are in compliance with ISO 10567:2007.

**VISION
CREATES
FUTURE**

