

ZOOMLION TECHNOLOGY WITH INGENUITY AND CARE



The world's leading excavator intelligent manufacturing factory

Zoomlion Smart City Earthmoving Machinery Park is an industry-leading intelligent and flexible excavator factory. From a piece of steel plate to an excavator, with high-precision welding process, highly reliable assembly process, high-level coating process and strict quality control, each excavator is delivered with ultimate quality.



Zoomlion Heavy Industry Science & Technology Co.,Ltd.

Add: No.361, South Yinpen Road, Changsha, Hunan Province, P.R.China 410013 Email: earthmoving@zoomlion.com
Copyright©2024 Zoomlion. All rights reserved. Reproduction and copying of any part of contents is not allowed for any purposes without Zoomlion's approval.
Note: Materials and specifications are subject to change without notice. Featured machines in photos may include additional equipment.



ZOOMLION 21-TONNAGE CRAWLER HYDRAULIC EXCAVATOR

ZE210GLC
ZE225GN



EXCELLENT PRODUCT

POWERFUL AND ENVIRONMENTALLY FRIENDLY

EU Stage V
Three-speed idling
ZOOMLION E-COT positive flow hydraulic control system

COMFORTABLE CAB

Suspension seat
Large touch screen
Detail-oriented comfort design

HIGH ROI

Increased productivity
Reduced idle time of equipment
Higher hydraulic system efficiency
Lower maintenance cost

SAFETY

ROPS cab

Engine power:

**ZE210GLC / ZE225GN:
129 kW @ 2200 rpm**

Operating weight:

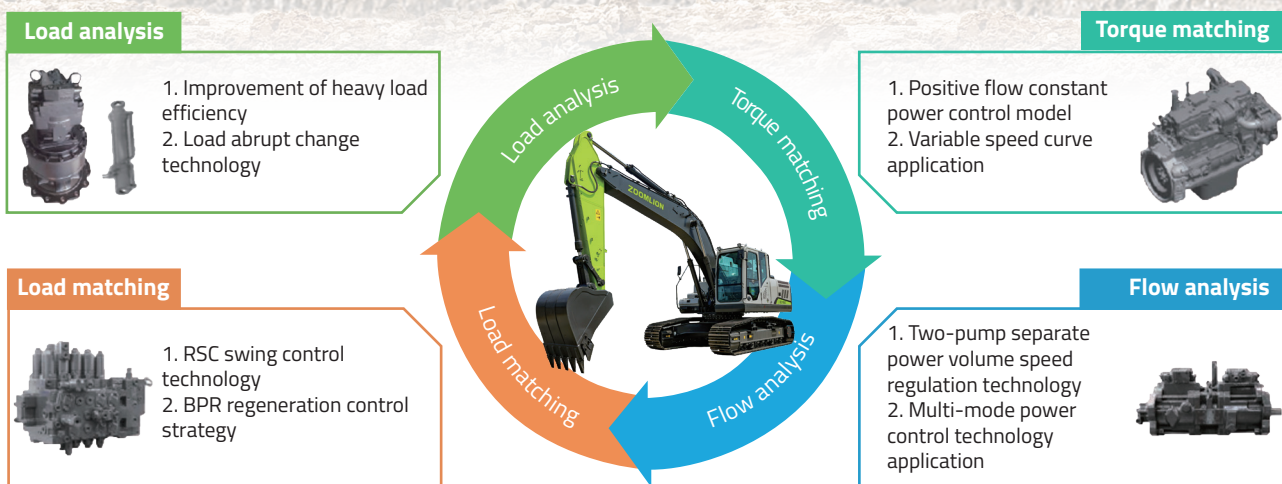
**ZE210GLC:
22700 kg**

**ZE225GN:
23300 kg**

Bucket capacity:

**ZE210GLC:
1.0~1.2 m³**

**ZE225GN:
0.85~1.1 m³**



ZE210GLC&ZE225GN adopt a positive flow control system independently developed by ZOOMLION. With the application of the load analysis, load matching, flow analysis and torque matching technologies, the work efficiency of large-scale digging and loading operation is improved while the fuel consumption is greatly reduced, creating value for customers.

<p>HIGH PRODUCTIVITY</p> <p>ZE210GLC&ZE225GN are powerful and agile. They adopt ZOOMLION E-COT positive flow hydraulic control technology. The high-power engine provides sufficient power for the operation, and the control system elaborately tuned by ZOOMLION brings fast response.</p>	<p>LOW IDLE RATE</p> <p>ZE210GLC&ZE225GN are equipped with a 360L/300L fuel tank and a customized 48L DEF tank, which reduce the time wasted for refueling and DEF filling and realizes long endurance. Moreover, the consumption percentage of DEF is synchronized with that of fuel.</p>	<p>LOW FUEL CONSUMPTION</p> <p>ZE210GLC&ZE225GN realize fuel saving through the three-speed idling function, in which the high engine speed gradually decreases to 900 rpm if the machine is not operated for certain time.</p>	<p>EXCELLENT HYDRAULIC SYSTEM EFFICIENCY</p> <p>ZE210GLC&ZE225GN adopt the multi-valve spools dynamic control technology and main pump flow dynamic matching technology, which makes the machine operation smoother. The flow of the main pump is adjusted through the working load to make the hydraulic system in the optimal working state, so as to achieve both excellent controllability and low fuel consumption.</p>
---	---	--	---

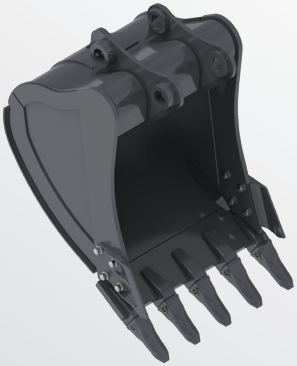
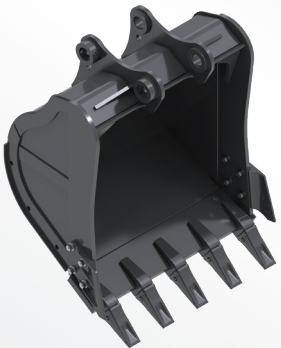


Type	Density of applicable materials	ZE210GLC	ZE225GN
Reinforced bucket	≤1500kg/m³	1.2m³	1.1m³
Rock bucket	≤1800kg/m³	1.0m³	0.85m³

REINFORCED BUCKET

Standard high efficient reinforced bucket of 1.2m³/1.1m³ capacity;
Loading efficiency is high because soil is hardly stuck on it; durable with enhanced design.

Suitable for light or loose materials.



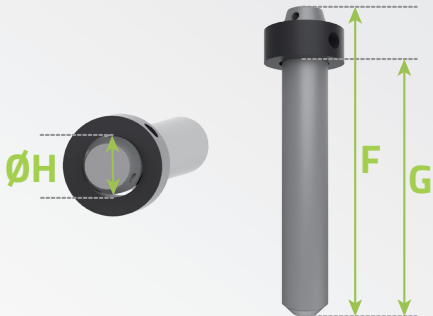
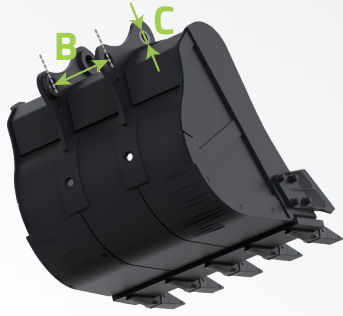
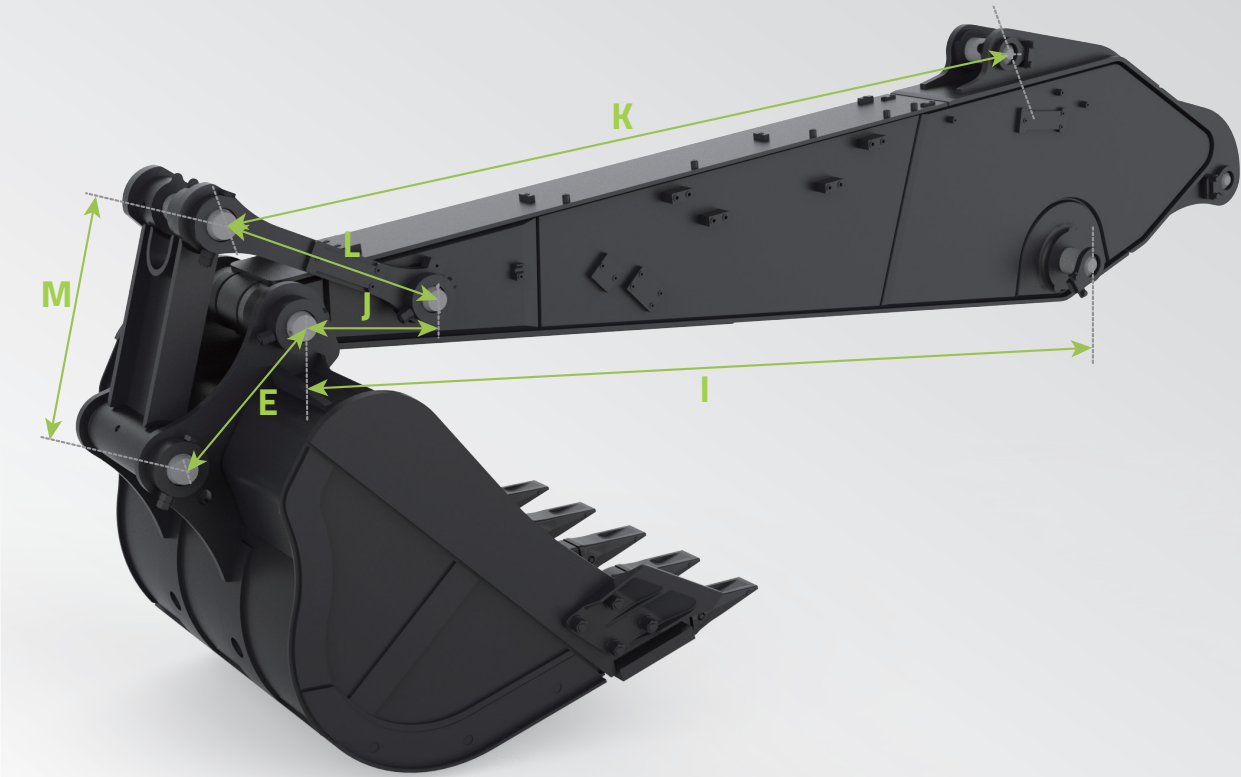
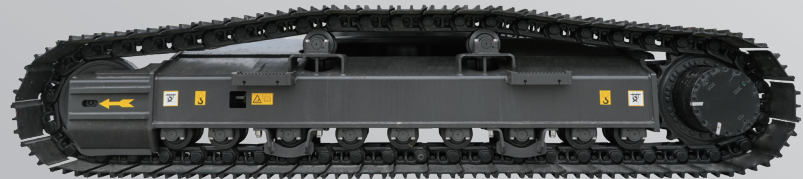
ROCK BUCKET

The optional 1.0m³/0.85m³ rock bucket is powerful during digging by greatly reducing the cutting resistance of bucket teeth;
The bucket is more durable by reducing the wear and impact of the rock on the bottom of the bucket. The stability of the whole machine is improved, and the operation is more comfortable.

Suitable for high abrasion applications like quarry or rock.

UNDERCARRIAGE

Larger grounding area for higher stability of the machine;
Reinforced design for higher durability;
Long undercarriage with 9 track rollers, which are tightly engaged with the chain for stronger bearing capacity;
The carrier rollers are replaced by track rollers, which are supported at both sides, with stronger bearing capacity and more effective protection for the track.



Unit: mm

MODEL	A	B	C	D	E	F	G	H	I
ZE210GLC	326	326	80	80	458	523	472	22	2925

MODEL	J	K	L	M
ZE145GU	408.5	2800	640	600

EXCELLENT CAB



Equipped with multifunctional joystick, which is easy to control, providing good user experience.

SPACIOUS CAB

The cab is equipped with a comfortable suspension seat, which can relieve the fatigue of the user. The large-stroke adjustable armrest box, armrest and seat provide the most comfortable state for the user. Large area glass provides the cab with high transmittance. Large space and comfortable working environment are conducive to the improvement of operator productivity.

USER-CENTERED DESIGN:

ZE210GLC&ZE225GN are equipped with radio as standard and provides an AUX interface to connect mobile devices to the in-vehicle entertainment system. The large touch screen at the front right provides the operator with convenient operation and in-depth technical experience. The multi-function integrated panel on the right side allows the operator to perform one-button start and gives consideration to the operators who get used to using physical keys. The temperature controlled storage box at the right rear provides the operator with a suitable food storage location.



SAFE EQUIPMENT

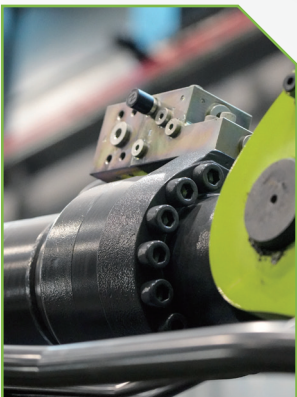
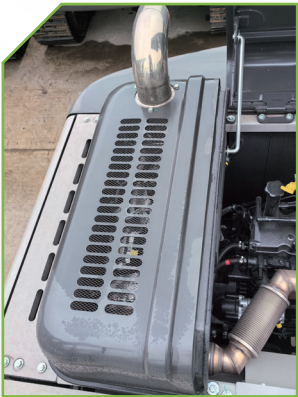
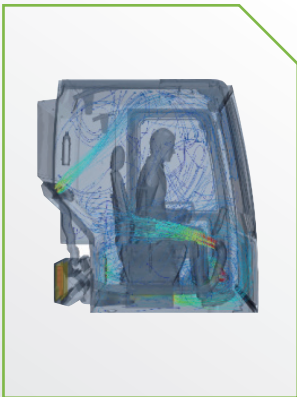
The safety performance of ZE210GLC&ZE225GN meet the latest industry standard. They provide various safety configurations, which minimizes the work safety risks of the personnel near and inside the equipment. The travel alarm lamp, emergency stop switch, high-density anti-skid cover and around view camera provide guarantee for safety.

The ROPS cab adopts a optimized high-strength frame of high impact resistance and durability. Low-noise design makes the working environment more comfortable.

High-power air conditioner and optimized air duct design, which brings more comfortable body feeling.

The aftertreatment unit is placed under the right hood which is normally closed, preventing injuries to personnel in the high temperature area of the aftertreatment unit.

Hose burst valves are standard for the boom and arm to ensure safety in construction and hoisting.



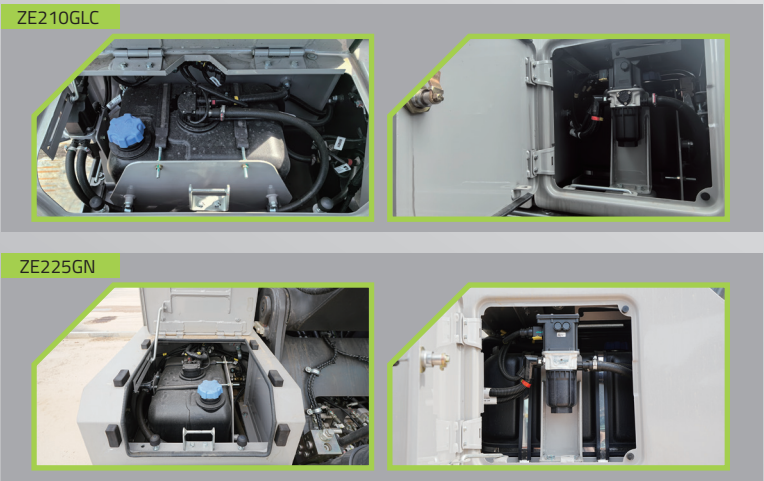
“ONE-STOP” MAINTENANCE

Most of the filters are placed in one location for easy and quick inspection and maintenance.



ZOOMLION MAINTENANCE

ZOOMLION Maintenance is a maintenance program installed on ZOOMLION machines. It reminds the customer to replace the maintenance parts and record the time of the next maintenance. ZOOMLION service engineer can also maintain the machine through this program. For relevant terms and conditions, please contact your local ZOOMLION dealer.



DEF TANK AND PUMP

The DEF tank is placed near the toolbox, and a side door can be opened to facilitate the replacement of DEF pump filter element.

CUSTOMER SERVICE

Zoomlion's slogan is "Vision creates future". It is not just a simple slogan, but an unshakable determination to exceed our customer's expectations. Zoomlion has always upheld this belief and tries to implement it in everything that we do for customers. The service we offer to customers is to think about what they think about and worry about what they worry about.

Zoomlion promises that once you choose us, we are ready to respond with the first arrival and solution any time, anywhere.

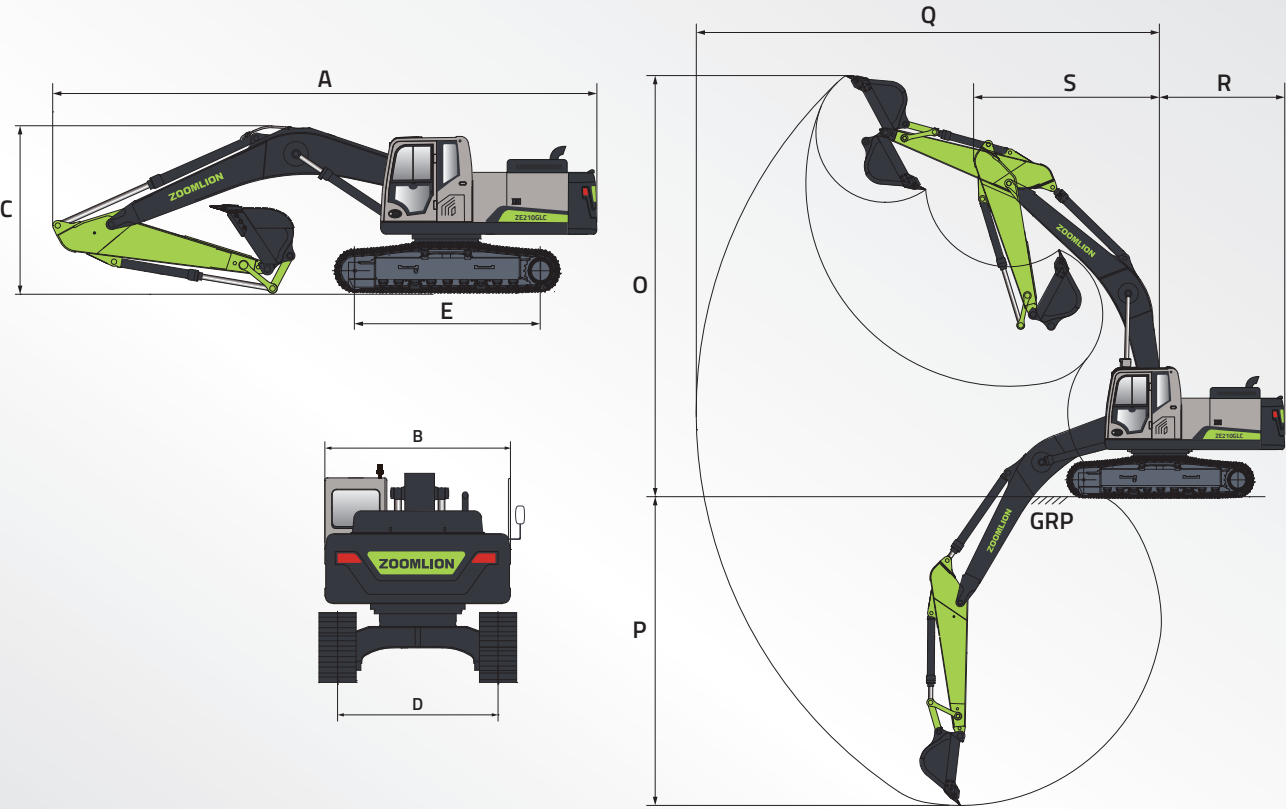
Various service content, professional service teams, global service networks and systematic technical support are readily available from Zoomlion for an effective response and solution upon your request no matter where you are in the world and what time it is.



TECHNICAL SPECIFICATIONS

	ZE210GLC	ZE225GN
ENGINE		
Brand	Cummins	
Model	B6.7	
Rated power	129 kW @ 2200 rpm	
Emission standards	EU Stage V	
Displacement	6.7 L	
HYDRAULIC SYSTEM		
Main pump	Two variable displacement piston pumps Maximum flow: 2×221 L/min	Two variable displacement piston pumps Maximum flow: 2×227.5 L/min
Pilot pump	One gear pump Maximum flow: 22 L/min	One gear pump Maximum flow: 26 L/min
Maximum pressure - Equipment	34.3 MPa	
Maximum pressure - Swing	32 MPa	29 MPa
Maximum pressure - Travel	34.3 MPa	
Maximum pressure - Boost	37.3 MPa	37 MPa
Maximum pressure – Pilot system	3.9 MPa	
UPPER FRAME		
Maximum swing speed	12 r/min	
Maximum swing torque	77.6 kNm	
UNDERCARRIAGE		
Number of carrier rollers (each side)	2 (Two sides supported track rollers)	
Number of track rollers (each side)	9	
Number of track guide (each side)	2	
Travel speed (high)	5.5 km/h	5.4 km/h
Travel speed (low)	3.5 km/h	3.4 km/h
Maximum drawbar pull	210 kN	
Gradeability	70%	
SERVICE REFILL CAPACITIES		
Fuel tank	360 L	300 L
Engine coolant	30 L	
Engine oil	26 L	
Swing drive	5.3 L	
Final drive (each side)	5 L	
Hydraulic system	230 L	
Hydraulic tank	130 L	
DEF tank	48 L	
WORK EQUIPMENT		
Boom length	5700 mm	
Arm length	2925 mm	
Digging force of bucket	150 kN	
Digging force of arm	109 kN	

	ZE210GLC	ZE225GN
OVERALL DIMENSIONS		
A Overall length	9650 mm	9720 mm
B Overall width	2990 mm	2540 mm
C Overall height	3150 mm	3150 mm
D Track gauge	2390 mm	2000 mm
E Length of track on ground	3660 mm	3660 mm
WORKING RANGE		
O Maximum digging height	10010 mm	10010 mm
P Maximum digging depth	6660 mm	6660 mm
Q Maximum digging reach	9900 mm	9900 mm
R Tail swing radius	2935 mm	2995 mm
S Front minimum swing radius	3430 mm	3200 mm



STANDARD & OPTIONAL FEATURES

Category	Features	ZE210GLC
Powertrain	Air cleaner	●
	Swirl type air pre-cleaner	●
Hydraulic system	Boom cylinder hose burst valve	●
	Arm cylinder hose burst valve	●
	Attachments plumbing	●
	Quick coupler plumbing	●
Cab	ROPS	●
	Mesh guard	○
	Skeleton guard	○
	Fire extinguisher	●
	Mechanical suspension seat	●
	Air suspension seat	○
	Sunshade curtain	○
	Air conditioner	●
	Multifunctional joystick	●
Undercarriage	600mm track	●
	700mm track	○
	800mm track	○
Electrical system	Acousto-optic alarm	●
	Emergency stop	●
	12V DC outlets	●
	Rear view camera	●
	Cab front light	● 2 pcs
	Boom light	● 2 pcs
	Upper frame light	● 1 pc
	Refilling pump	●
	GPS	●
	AM/FM radio	●
	Right view camera and light	●
	Counterweight light	●
	Cab rear light	●
Others	Cylinder sleeve	○
	Cab rear mirror	● 1 pc
	Handrail rear mirror	● 1 pc
	Auto greasing system	○
	2D guiding system	○

● Standard ○ Optional

STANDARD & OPTIONAL FEATURES

Category	Features	ZE225GLC
Powertrain	Air cleaner	●
	Swirl type air pre-cleaner	●
Hydraulic system	Boom cylinder hose burst valve	●
	Arm cylinder hose burst valve	●
	Attachments plumbing	●
	Quick coupler plumbing	●
Cab	ROPS	●
	Mesh guard	○
	Skeleton guard	○
	Fire extinguisher	●
	Mechanical suspension seat	●
	Air suspension seat	○
	Sunshade curtain	○
	Air conditioner	●
	Multifunctional joystick	●
Undercarriage	500mm track	●
	600mm track	○
Electrical system	Acousto-optic alarm	●
	Emergency stop	●
	12V DC outlets	●
	Rear view camera	●
	Cab front light	● 2 pcs
	Boom light	● 2 pcs
	Upper frame light	● 1 pc
	Refilling pump	●
	GPS	●
	AM/FM radio	●
	Right view camera and light	●
	Counterweight light	●
	Cab rear light	●
	Cylinder sleeve	○
	Cab rear mirror	● 1 pc
	Handrail rear mirror	● 1 pc
	Auto greasing system	○
Others	2D guiding system	○

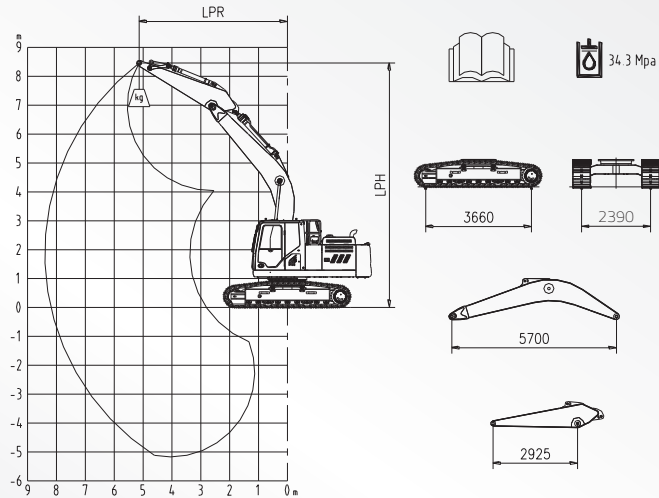
● Standard ○ Optional

LIFT CAPACITY

ZE210GLC



Do not attempt to lift or hold any load that is greater than these rated values at their specified lift-point radius and height.
The lift point is located at the centreline of the bucket pivot mounting pin on the arm.



LPH	Rated lift capacity (kg)												
	LPR										Lift capacity at maximum radius		
	1.5m		3.0m		4.5m		6.0m		7.5m				
m	End	Side	End	Side	End	Side	End	Side	End	Side	End	Side	m
7.5							*4190	*4190			*3460	*3460	6.19
6.0							*4500	*4500			*3220	*3220	7.30
4.5					*5710	*5710	*5000	*5000	*4700	3620	*3170	*3170	7.97
3.0					*7400	*7400	*5780	*5780	*5040	3500	*3260	2960	8.32
1.5					*8990	6920	*6600	4640	*5440	3370	*3480	2850	8.40
zemin			*7090	*7090	*9870	6610	*7180	4450	5570	3280	*3880	2900	8.20
-1.5	*7460	*7460	*11210	*11210	*10000	6530	*7370	4370	5540	3250	*4620	3150	7.70
-3.0	*11690	*11690	*13420	*13420	*9400	6600	*6940	4410			*5820	3740	6.84
-4.5			*10810	*10810	*7680	6850					*6020	5290	5.44

Capacities marked with an asterisk (*) are limited by hydraulic capacities. See Note 2.

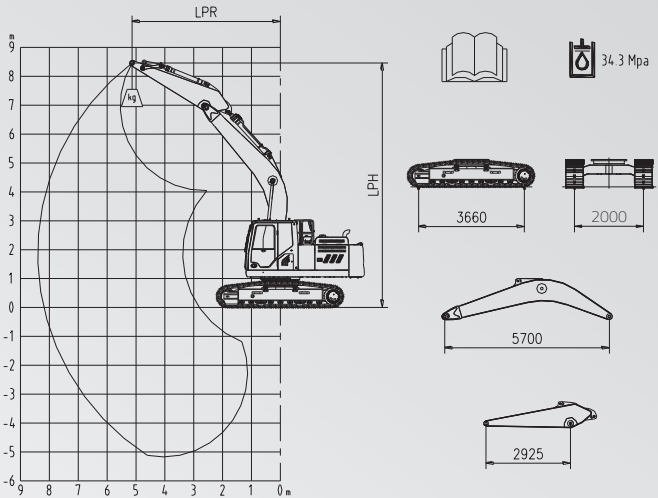
- The mass of slings and any auxiliary lifting devices shall be deducted from the rated load to determine the net load that may be lifted.
- Lift capacities are based on the machine standing on a firm, uniform supporting surface. The user shall make allowances for job conditions such as soft or uneven ground.
- The operator should be fully acquainted with the operator's manual and the operating safety manual furnished by the manufacturer before operating fixe machine.
- NOTE 1 Lift capacities shown are without the power boost feature engaged.
- NOTE 2 Lift capacities shown do not exceed 75% of minimum tipping loads or 87% of hydraulic capacities.
- NOTE 3 The least stable position is over the side.
- NOTE 4 Lift capacities apply only to the machine as originally manufactured and normally equipped by the manufacturer.
- NOTE 5 The total mass of the machine is 22700kg. Included in this mass are 600mm triple grouser shoes, 5.7 m boom, 2.925 m arm, 3950 kg counterweight, all operating fluids and a 75 kg operator.
- NOTE 6 Lift capacities are in compliance with ISO 10567:2007.

LIFT CAPACITY

ZE225GN



Do not attempt to lift or hold any load that is greater than these rated values at their specified lift-point radius and height.
The lift point is located at the centreline of the bucket pivot mounting pin on the arm.



LPH	Rated lift capacity (kg)												
	LPR										Lift capacity at maximum radius		
	1.5m		3.0m		4.5m		6.0m		7.5m				
m	End	Side	End	Side	End	Side	End	Side	End	Side	End	Side	m
7.5							*4186	*4186			*3457	*3457	6163
6.0							*4616	*4616			*3222	*3222	7293
4.5					*5818	*5818	*5116	*5116	*4827	43	*3179	*3179	7967
3.0					*7543	*7543	*5911	5896	*5171	4317	*3265	*3265	8315
1.5					*9162	8266	*6734	5639	*5586	4192	*3485	*3485	8397
zemin			*7067	*7067	*1008	7984	*7337	5458	*5897	4096	*3901	3652	8195
-1.5	*7431	*7431	*11171	*11171	*10232	7905	*7537	5383	*5901	4071	*4613	3934	7694
-3.0	*11645	*11645	*13757	*13757	*9653	7979	*7125	5412			*6011	4651	6818
-4.5			*11144	*11144	*7938	*7938					*6233	*6233	5432

Capacities marked with an asterisk (*) are limited by hydraulic capacities. See Note 2.

- The mass of slings and any auxiliary lifting devices shall be deducted from the rated load to determine the net load that may be lifted.
- Lift capacities are based on the machine standing on a firm, uniform supporting surface. The user shall make allowances for job conditions such as soft or uneven ground.
- The operator should be fully acquainted with the operator's manual and the operating safety manual furnished by the manufacturer before operating fixe machine.
- NOTE 1 Lift capacities shown are without the power boost feature engaged.
- NOTE 2 Lift capacities shown do not exceed 75% of minimum tipping loads or 87% of hydraulic capacities.
- NOTE 3 The least stable position is over the side.
- NOTE 4 Lift capacities apply only to the machine as originally manufactured and normally equipped by the manufacturer.
- NOTE 5 The total mass of the machine is 23300kg. Included in this mass are 500mm triple grouser shoes, 5.7 m boom, 2.925 m arm, 3950 kg counterweight, all operating fluids and a 75 kg operator.
- NOTE 6 Lift capacities are in compliance with ISO 10567:2007.

