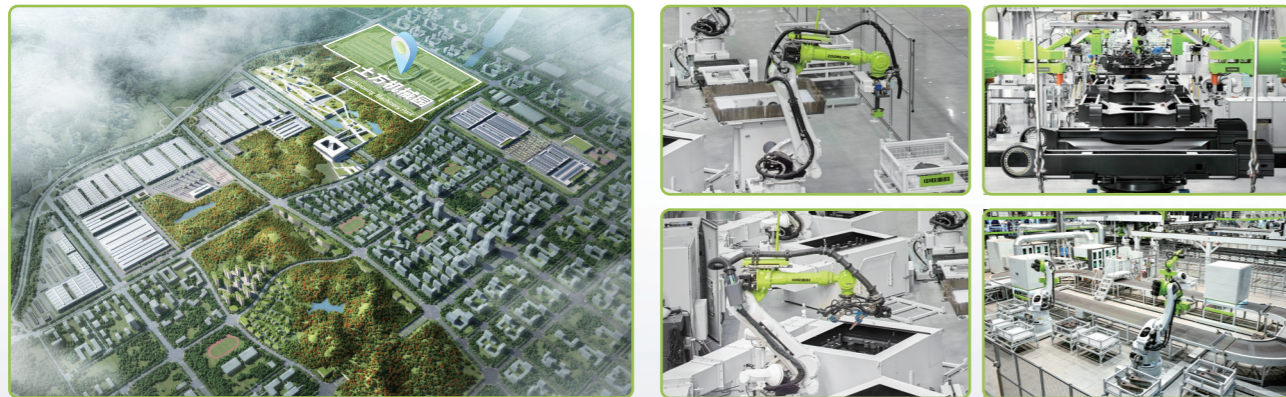


科技中联, 匠心相伴 ZOOMLION TECHNOLOGY WITH INGENUITY AND CARE



全球领先的挖掘机智能制造工厂

The world's leading excavator intelligent manufacturing factory

中联智慧产业城土方机械园区拥有行业领先的智能化、柔性化的挖掘机工厂, 从一块钢板到一台挖掘机, 以高精度的焊接工艺、高可靠的装配工艺、高级别的涂装工艺和严苛的品质管控, 让每一台交付的挖掘机都具备极致品质。Zoomlion Smart City Earthmoving Machinery Park is an industry-leading intelligent and flexible excavator factory. From a piece of steel plate to an excavator, with high-precision welding process, highly reliable assembly process, high-level coating process and strict quality control, each excavator is delivered with ultimate quality.

ZOOMLION

Zoomlion Heavy Industry Science & Technology Co.,Ltd.

Add: No.361, South Yinpen Road, Changsha, Hunan Province, P.R.China 410013 Email: earthmoving@zoomlion.com
Copyright©2025 Zoomlion. All rights reserved. Reproduction and copying of any part of contents is not allowed for any purposes without Zoomlion's approval.
Note: Materials and specifications are subject to change without notice. Featured machines in photos may include additional equipment.



ZOOMLION 13-TONNAGE CRAWLER HYDRAULIC EXCAVATOR

FOREST EDITION

中联重科13吨级履带式液压挖掘机—森林型
ZE135GF



ZOOMLION



01

ADAPTABILITY IMPROVEMENT
完美适配性

02

CONFIGURATION & EFFICIENCY
配置与效率

03

COMFORT & INTELLIGENCE
舒适与智能

04

CONVENIENT MAINTENANCE
维修便捷

05

CUSTOMER EXPERIENCE
客户体验

06

STANDARD & OPTIONAL PARTS
标配&选配



ZE135GF

Engine power: 86 kW @ 2000 rpm
Operating weight: 16500 kg
Standard: Grab clip

发动机功率: 86 kW @ 2000 rpm
操作重量: 16500 kg
标配: 夹木器



ADAPTABILITY IMPROVEMENT

完美适配性

FOREST EDITION 森林版本

ZE135GF excavator is a high performance and high reliability forest-type excavator designed and developed by our company with many years of design and manufacturing technology to meet the market demand. The product uses the latest hydraulic system and is equipped with Cummins engines to meet the Southeast Asia market emissions.

ZE135GF挖掘机为适应市场需求，运用多年设计制造挖掘机技术经验，并结合国际先进技术，设计开发的高性能、高可靠性的森林型挖掘机；该产品采用了最新的液压系统，并搭载康明斯发动机，以满足东南亚市场的排放。



BIGGER AND STRONGER GRAPPLES 更大更强的抓夹

Thanks to the new forest type wood grapple, The number of grabs has increased significantly; The full side of the high-strength steel strengthens the workmanship, achieving a leap in durability for enhanced efficiency of customers.

全新森林机型夹木器，抓取数量大幅提升；全侧采用高强度加强工艺，实现耐用性质的飞跃，为客户的效率保驾护航。

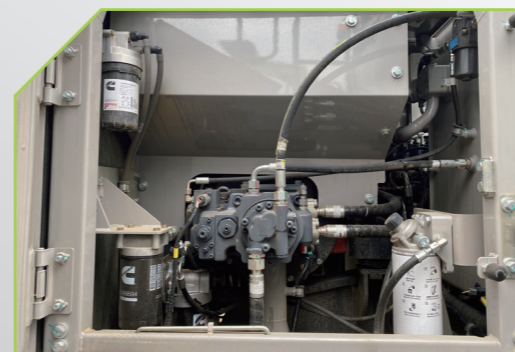
CONFIGURATION & EFFICIENCY

配置与效率

POWER SYSTEM 动力系统

Cummins four-cylinder QSF3.8 engine, Apply the proprietary electronic control technology of ZOOMLION, optimized engine performance, the whole machine has better fuel economy. Increased power by 20%, more powerful, more stable output, more powerful and faster work.

搭载康明斯四缸QSF3.8发动机，应用中联专属电控技术，优化了发动机性能，整机具有更卓越的燃油经济性。功率增加20%，动力更强劲、输出更平稳，干活更有力更快。



BIODIESEL ADAPTABILITY 生物柴油的适应性

Biodiesel special oil-water separator can be adapted to diesel in Southeast Asia. The service life of the filter element is longer than the traditional filter. The use of biodiesel filter paper, high pollution capacity of multi-layer filter material and deep layer coalesces filter material, can effectively filter the water and impurities in the fuel, to achieve effective protection of the engine fuel nozzle.

生物柴油专用油水分离器可以适应东南亚的柴油，滤芯的使用寿命较传统滤芯提升，使用生物柴油过滤滤纸，高容污的多层滤材和深的层聚结滤材，可对燃油中的水和杂质进行有效过滤，实现对发动机喷油嘴的有效保护。



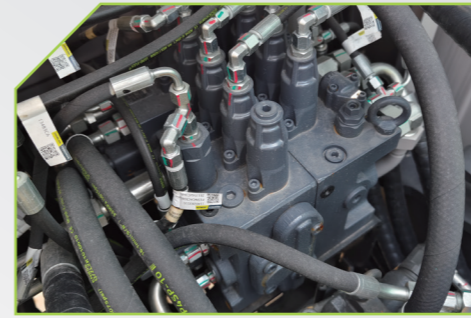
Fuel filter using new filter paper, fuel-water separation and impurity filtration efficiency is higher, to provide more pure fuel for the engine, reduce fuel system failure; Fuel cooling radiator accurately controls the fuel temperature to keep the engine in the best working condition.

采用新型滤纸的燃油过滤器，油水分离与杂质过滤效率更高，为发动机提供更纯净的燃油，减少燃油系统故障；燃油冷却散热器，精准控制燃油温度，保持发动机最佳工作状态。



The air filter with high filtration efficiency and large ash content, can effectively protect the engine even in harsh working environments and ensure long-term operation.

高过滤效率和大容灰量的空气过滤器，即使在恶劣的工作环境中，也能有效地保护发动机，保证长久地工作。



Large diameter main valve, spool structure targeted optimization, reduce the oil passage pressure loss, improve the coordination of composite action.

大通径主阀，阀芯结构针对性优化，降低了油道压力损失，提升了复合动作协调性。



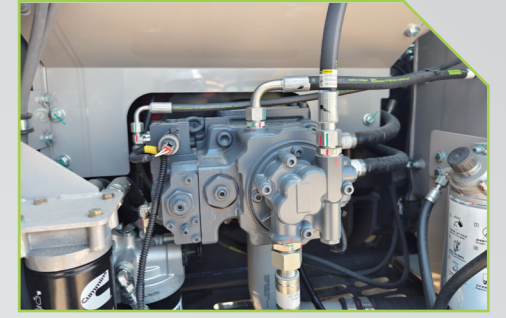
High-torque travel motor, Walking traction and speed are perfectly matched, providing excellent traveling, turning and gradeability.

大扭矩行走马达，行走牵引力与速度完美匹配，提供优异的行走、转弯与爬坡能力。



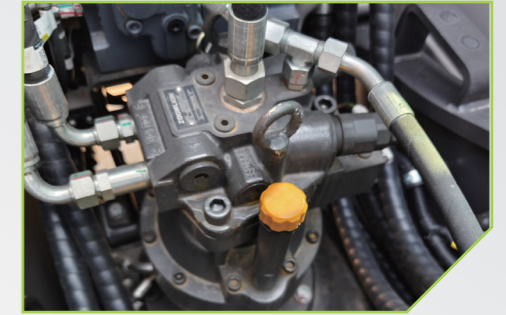
Track rollers are used as carrier rollers that are supported on both sides, providing stronger bearing performance and more effective protection of track.

支重轮作托链轮，托链轮双侧支撑，承载性能更强，更有效保护履带。



Large displacement main pump, the maximum working pressure can reach 37MPa (booster mode), heavy load is guaranteed; Double variable piston pump, faster; Lower operating speed, lower noise.

大排量主泵，最高工作压力可达37MPa（增压模式），重载有保障；双变量柱塞泵，速度更快；更低的工作转速，噪音更低。



Large displacement swing motor, mature technology, large swing torque, fast start, fast swing speed.

大排量回转马达，技术成熟，回转扭矩大，启动迅速，回转速度快。



Track side beam large slope design effectively reduces soil accumulation and ensures smooth travel

履带边梁大边坡设计，有效减少泥土堆积，确保行走顺畅。



The frame adopts the raised D-shaped side beam and the strengthened main beam, and the key parts are made of high-strength steel plate, so the overall strength is higher.

车架采用加高的D型边梁、加强型主梁，关键部位采用高强度钢板，整体强度更高。



With the control program independently developed by ZOOMLION, Perfectly adapted to Southeast Asian forest conditions, Reduce overall fuel consumption by 10%; At the same time equipped with the whole machine protection, That is to ensure fuel-efficient customer demand, but also to ensure the safety of the driver.

搭配中联自主开发的控制程序，完美适应东南亚森林工况，综合油耗减少10%；同时搭载整机全防护，即保证节油高效的客户需求，又保证了驾驶员安全。



COMFORT & INTELLIGENCE

舒适与智能



Large touch screen with highly integrated control panel
大尺寸触摸屏
标配后视摄像头



Push start
一键启动



Cup holder
杯托

- USB 
- Bluetooth(蓝牙) 
- Data Transmission (数据传输) 



Highly integrated control panel
高集成化 控制面板



Special suspension seat of large stroke full wrapping experience
大行程专用悬浮座椅全包裹体验



Compared with the previous generation cab, Optional air conditioning with better cooling effect
新一代驾驶室相比上一代驾驶室，可选配制冷效果更好的空调



Superb all-round visibility thanks to large window areas, with increased glass transmittance above 11%. Customers can choose the sunshade
大面积环绕式玻璃玻璃通透率提升11%以上
客户可以选配遮阳帘

CONVENIENT MAINTENANCE

维保便捷



Air conditioning filter element maintenance fast, large operating space.

空调滤芯保养快捷，操作空间大。



Oil filter, diesel filter, pilot filter inspection and maintenance are easily accessible at ground level, to achieve one-stop maintenance.

机油滤、柴油滤、先导滤的检视与保养均伸手可及，实现一站式保养。



Increase the slewing bearing centralized lubrication function, more convenient maintenance.

增加回转支承集中润滑功能，保养更方便。



Engine room space is larger, and inspection, repair, maintenance are more convenient;

发动机舱空间更大，检视、维修、保养更方便；

CUSTOMER EXPERIENCE

客户体验

YOU CAN TRUST ZOOMLION 你可以相信中联重科

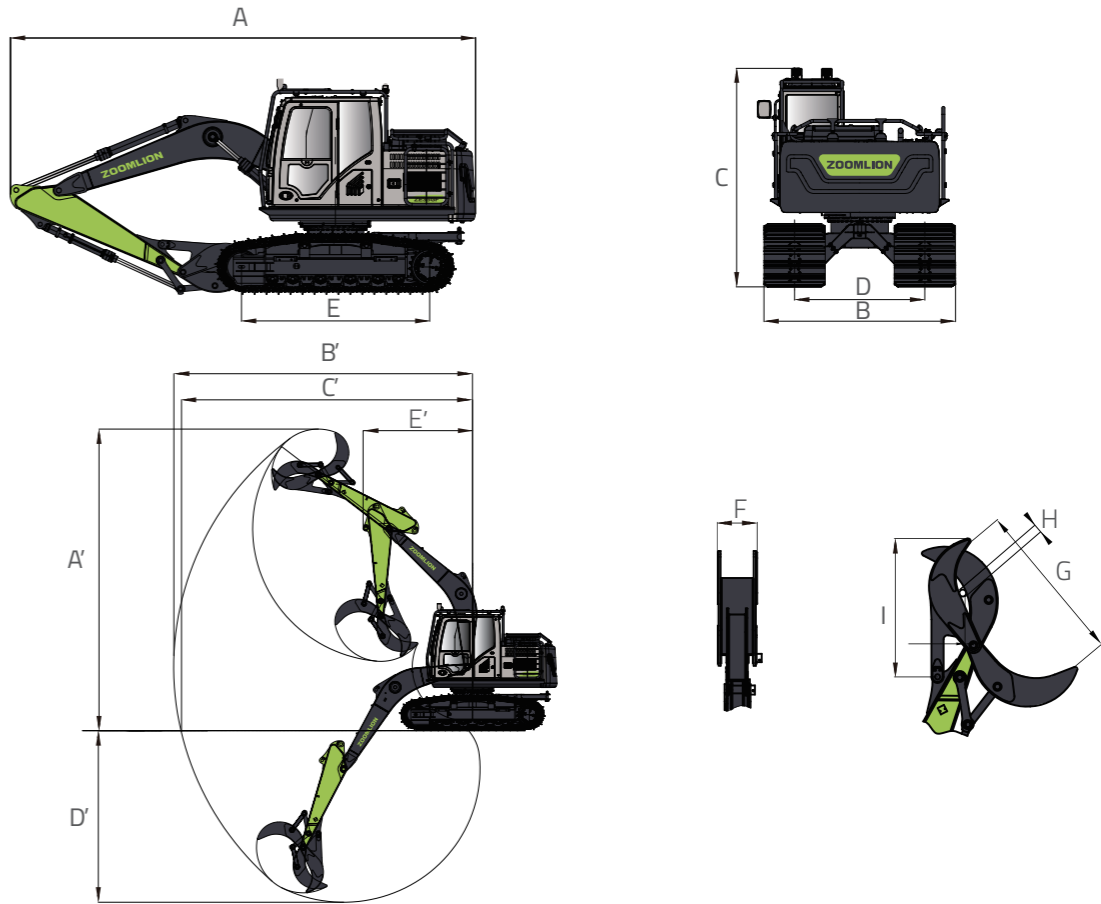
Zoomlion's service engineers are located in various key countries. According to the distribution of customers' equipment, engineers will be stationed in that country for a long time. If customers need it, our mission will be fulfilled. Every year, Zoomlion's service engineers carry out a service trip to visit new and old customers, listen to their opinions on service needs, collect their demands, Respond to reasonable demands in a timely manner.

中联重科的服务工程师分布在各个重点国家,根据客户设备分布情况,工程师长期驻点该国家,客户有需要,我们使命必达。每年中联重科服务工程师都会开展服务万里行活动,针对新老客户拜访,听取服务需求意见,收集客户诉求,及时响应合理诉求。



ZE135GF		
发动机 ENGINE		
品牌 Brand	康明斯 Cummins	
型号 Model	QSF3.8t3TC115	
额定功率 Rated power	86 kW @ 2200 rpm	
排量 Displacement	3.8 L	
液压系统 HYDRAULIC SYSTEM		
主泵 Main pump	2个变量柱塞泵 最大流量：2 × 130 L / min	Two variable displacement piston pumps Maximum flow: 2 × 130 L / min
先导泵 Pilot pump	1个齿轮泵 最大流量：26 L / min	One gear pump Maximum flow: 26 L / min
溢流阀设定 SYSTEM PRESSURE SETTING		
工作油路 Working oil circuit	34.3 MPa	
回转油路 Swing oil circuit	25.0 Mpa	
行走油路 Traveling oil circuit	34.3 MPa	
先导油路 Pilot oil circuit	3.9 MPa	
增压模式 Supercharging mode	37 MPa	
底盘结构 UNDERCARRIAGE STRUCTURE		
托链轮数量（每侧）Carrier roller	2（双侧支撑支重轮式）	2 (replaced by track rollers)
支重轮数量（每侧）Track roller	6	
链轮数量（每侧）Sprocket	1	
引导轮数量（每侧）Idler	1	
行走速度 TRAVELING SPEED (HIGH/LOW)		
高 High	4.5 km / h	
低 Low	2.6 km / h	
最大牵引力 Maximum drawbar pull	156 kN	
爬坡能力 Gradeability	70 %	
上车平台 UPPER STRUCTURE		
回转速度 Swing speed	12 r/min	
回转扭矩 Swing torque	39 kNm	
工作装置 WORK EQUIPMENT		
动臂长度 Boom（mm）	4260 mm	
斗杆长度 Arm (mm)	2360 mm	
抓夹尺寸 GRAPPLE SIZE		
标配 Standard	抓夹 Grapple	
开口尺寸 Opening size	1865 mm	
维护保养加注容量 SERVICE REFILL CAPACITIES		
燃油箱容积 Fuel tank (topped up)	240 L	
发动机冷却液 Coolant (standard level)	27 L	
发动机油 Engine oil (standard level)	12 L	
行走装置（每侧）Traveling mechanism (standard level)	5 L	
液压系统 Hydraulic system (standard level)	130 L	
液压油箱 Hydraulic oil tank (standard level)	145 L	

ZE135GF		
整机尺寸 DIMENSIONS		
A 总长度 Overall length		7380 mm
B 总宽度 Overall width		3000 mm
C 总高度 Overall height		2835 mm
D 履带轨距 Track Gauge		2040 mm
E 履带轴距 Length of Track on Ground		2985 mm
性能参数 PERFORMANCE PARAMETER		
工作质量 Operating weight kg		16500 kg
抓夹范围 Wood grapple reach mm		1865 mm
额定功率 Rated power kw/rpm		86 kw / 2200 rpm
行走速度（高/低） Travel speed（high/low）		4.5 / 2.6 km / h
回转速度 Swing speed rpm		12 rpm
作业范围 OPERATING RANGE		
A' 最大作业高度 Max. operating height		8120 mm
B' 最大作业距离 Max. working distance		7850 mm
C' 地面最大作业距离 Max. surface operating distance		7660 mm
D' 最大作业深度 Max. operating depth		4620 mm
E' 前部最小回转半径 Minimum swing radius of the front		1635 mm
F 抓木器宽度 Grapple width		460 mm
G 最大开口 Max. opening		1865 mm
H 最小抓取直径 Grasp diameter		100 mm
I 抓木器长度 Grabber length		2875 mm



STANDARD & OPTIONAL PARTS

标配&选配

分类CATEGORY	配置项FEATURES	ZE135GF
POWERTRAIN 动力系统	空气滤清器 Air cleaner	●
	生物燃油过滤器 Biofuel filter	●
CAB 驾驶室	司机室 Driver's cab	●
	顶栅格防护 Top Skeleton guard	●
	灭火器 Fire extinguisher	●
	机械悬浮座椅 Mechanical suspension seat	●
	冷暖空调 Air conditioner	○
	右窗帘 Right curtain	○
	左窗帘 Left curtain	○
	后窗帘 Rear curtain	○
	顶遮阳帘 Top sunshade	○
	前遮阳帘 Front sunshade	○
	普通手柄 Plain handle	●
BOTTOM COVER 平台下封板	6mm	●
UNDERCARRIAGE 下车	单筋钢履带 Single steel track	●
	960mm履带 960mm track	●
	800mm履带 800mm track	○
	托链轮/单侧 Carrier rollers/single side	●双支重轮Dual track rollers
	支重轮/单侧 Track roller/single side	●6个 6pc
	下车夹轨器/单侧 Undercarriage track guide/single side	●4护轨Guard rail
ELECTRICAL SYSTEM 电气	拖钩 Towing hook	○
	急停开关 Emergency stop	●
	24V电源接口 24V DC outlets	●
	后视摄像头 Rear view camera	●
	驾驶室前顶灯 Cab front light	●2个 2pc
	动臂工作灯 Boom light	●2个 2pc
	转台灯 Upper frame light	●1个 1pc
	燃油加注泵 Refueling pump	○
OTHERS 其他	AM/FM收音机 AM/FM radio	●
	驾驶室后视镜 Cab rearview mirror	●1个 1pc
	扶手后视镜 Handrail rearview mirror	●1个 1pc

STANDARD 标配 ●

OPTIONAL 选配 ○

起吊能力表

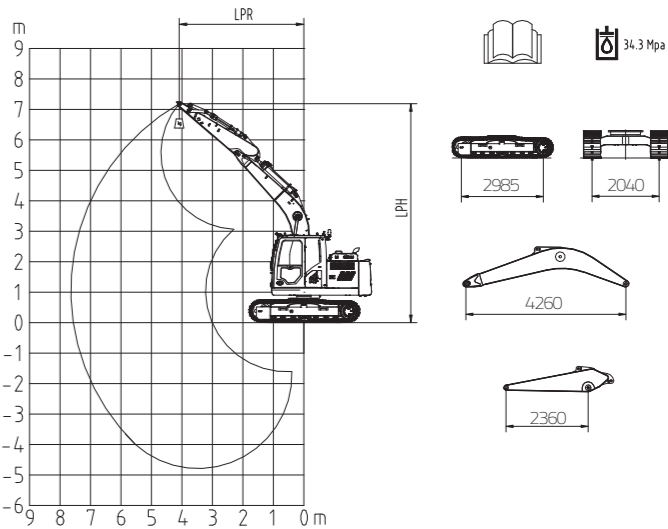
LIFT CAPACITY

在规定的起吊点半径和高度下，不要起吊大于额定值的负载。

Do not attempt to lift or hold any load that is greater than these rated values at their specified lift-point radius and height.

起吊点位于铲斗在斗杆上安装销轴的中心。

The lift point is located at the centreline of the bucket pivot mounting pin on the arm.

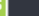
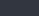
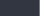
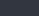
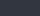
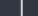
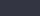
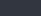
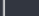
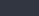
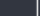
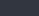
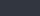

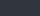
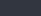


动臂4260mm，斗杆2360mm，底盘轴距2985mm，轨距2040mm，履带板960mm，配重2023kg在斗杆末端起吊，无铲斗。

计算有铲斗的起吊能力，只须从下面的值中减去直接安装铲斗或快速安装铲斗的实际重量即可。

Boom 4260mm, arm 2360mm, chassis wheelbase 2985mm, track gauge 2040mm, track plate 960mm, weight 2023kgLifting at the end of the bucket rod, no bucket.

The lifting capacity of a bucket can be calculated by subtracting the actual weight of a directly mounted bucket or a quick mounted bucket from the values below.

半径 Radius		1.5m		2.0m		3.0m		4.0m		5.0m		6.0m		6.5m		最大距离 Maximum reach			
																		m	
高度 Height	6.5m	kg															*3258	*3258	4.47
	6.0m	kg															*3039	*3039	4.97
	5.0m	kg									*4075	4034					*2789	*2789	5.7
	4.0m	kg									*4235	3980	*3581	2999			*2679	*2679	6.19
	3.0m	kg					*6645	*6645	*5295	*5295	*4577	3889	*4155	2963			*2657	2.623	6.49
	2.0m	kg					*8224	8069	*6054	5214	*4970	3782	4141	2909	*3514	2587	*2708	2518	6.62
	1.0m	kg					*9021	7775	*6653	5049	*5292	3682	4082	2856	*3583	2555	*2835	2505	6.6
	0m	kg					*9310	7611	*6899	4941	5265	3610	4045	2821			*3063	2587	6.41
	-1.0m	kg	*4854	*4854	*6055	*6055	*8942	7598	*6740	4896	5236	3582	4044	2820			*3446	2790	6.05
-2.0m	kg	*7874	*7874	*9512	*9512	*7957	7611	*6111	4902	*4683	3599					*3875	3196	5.5	
-3.0m	kg					*6276	*6276	*4735	*4735							*3528	*3528	4.66	

- 1.表中载荷符合SAE J1097和ISO 10567液压挖掘机举升标准。
- 2.额定载荷不超过液压举升能力的87%或倾翻载荷的75%。
- 3.带有星号（*）的额定载荷主要受制于液压能力而非倾翻载荷。

1. The load in the table complies with SAE J1097 and ISO 10567 hydraulic excavator lifting standards.
2. The rated load does not exceed 87% of the hydraulic lifting capacity or 75% of the tipping load.
3. The load rating marked with an asterisk (*) is primarily subject to hydraulic capacity rather than tipping load.

**VISION
CREATES
FUTURE**

