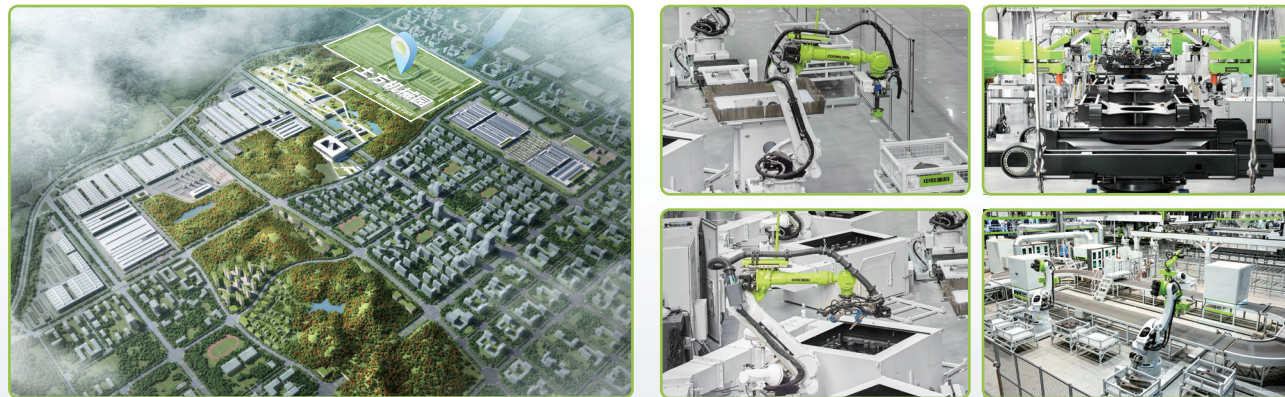


# 科技中联, 匠心相伴 ZOOMLION TECHNOLOGY WITH INGENUITY AND CARE



全球领先的挖掘机智能制造工厂

The world's leading excavator intelligent manufacturing factory

中联智慧产业城土方机械园区拥有行业领先的智能化、柔性化的挖掘机工厂, 从一块钢板到一台挖掘机, 以高精度的焊接工艺、高可靠的装配工艺、高级别的涂装工艺和严苛的品质管控, 让每一台交付的挖掘机都具备极致品质。Zoomlion Smart City Earthmoving Machinery Park is an industry-leading intelligent and flexible excavator factory. From a piece of steel plate to an excavator, with high-precision welding process, highly reliable assembly process, high-level coating process and strict quality control, each excavator is delivered with ultimate quality.

ZOOMLION

Zoomlion Heavy Industry Science & Technology Co.,Ltd.

Add: No.361, South Yipen Road, Changsha, Hunan Province, P.R.China 410013 Email: earthmoving@zoomlion.com  
Copyright©2025 Zoomlion. All rights reserved. Reproduction and copying of any part of contents is not allowed for any purposes without Zoomlion's approval.  
Note: Materials and specifications are subject to change without notice. Featured machines in photos may include additional equipment.



# 中联重科21吨级 履带式液压挖掘机

ZOOMLION 21-TONNAGE CRAWLER  
HYDRAULIC EXCAVATOR

ZE215G / ZE215G Pro



ZOOMLION





**ZOOMLION**

**ZE215G Pro**

发动机功率:  
ENGINE POWER:  
**134 kw @ 2100 rpm**

操作重量:  
OPERATING WEIGHT:  
**22000kg**

铲斗容量:  
BUCKET CAPACITY RANGE:  
**1.0~1.1m³**





**10%的油耗降低**  
**10% LESS FUEL**  
**CONSUMPTION**

更低的发动机转速与更大的主泵排量相匹配, 在保证高性能的同时消耗更少的燃油, 相比上代机型, 油耗最多可降低10%

A combination of lower engine speed and larger pump displacement, ensuring performance while consuming less fuel. The fuel consumption is reduced by up to 10% compared to the previous generation model.

**10%以上的铲斗容量提升**  
**MORE THAN 10% LARGER**  
**BUCKET**

强化斗容积增加10%, 岩石斗容积增加17%, 斗容更大, 为客户创造更大价值。

The capacity of the reinforced bucket is increased by 10%, and the capacity of the rock bucket is increased by 17%. More values are gained for customer with larger buckets.

**5%的效率提升**  
**5% HIGHER EFFICIENCY**

更大的发动机功率、更大的主泵排量、更大通径的主阀、全新设计的铲斗, 相比上代机型, 效率提升5%以上。

With higher engine power, larger pump displacement, larger flow diameter main control valve and newly designed bucket, the efficiency is increased by more than 5% compared to the previous generation model.

**11%更高通透率的驾驶室**  
**11% HIGHER**  
**TRANSMITTANCE CAB**

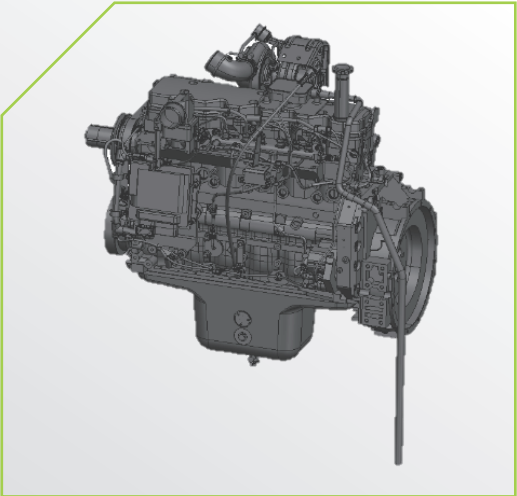
驾驶室采用大面积玻璃, 通透率提升11%以上。采用悬浮座椅、触控面板、全新空调等, 驾驶舒适性全面提升。

Large area glass is used on the cab, and glass transmittance is increased by more than 11%. The driving comfort is improved greatly by also using suspension seat, touch screen, new air conditioning, etc.



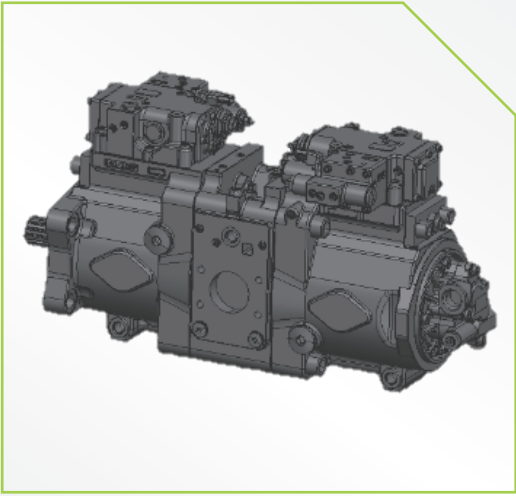
节能高效

ENERGY SAVING AND EFFICIENT



采用新型电控系统优化了发动机性能, 获得了更高的发动机功率和更好的燃油经济性。

The engine performance is optimized by utilizing new electronic control system, obtaining higher engine power and better fuel economy.



大排量主泵, 低转速下即可输出高流量, 保证效率的同时降低了油耗。

Large displacement pump, which can deliver high flow at low speed, ensuring efficiency while reducing fuel consumption.

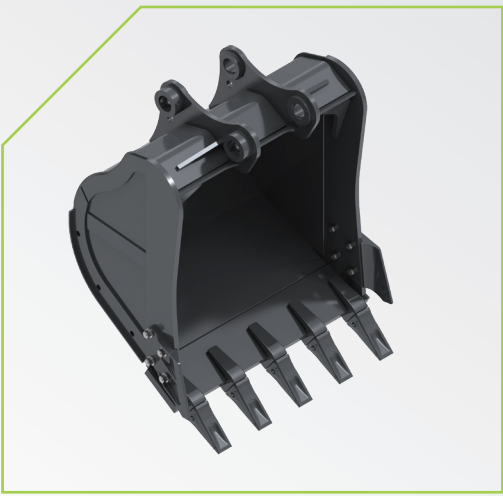


ZE215G Pro采用自主开发的正流量控制系统, 通过负载分析、负载匹配、流量分析、扭矩匹配四大关键技术的加载, 针对大土方挖掘与装车作业, 实现效率提升的同时, 油耗大幅降低, 为客户创造价值。

ZE215G Pro adopts a positive flow control system independently developed by ZOOMLION. With the application of the load analysis, load matching, flow analysis and torque matching technologies, the work efficiency of large-scale digging and loading operation is improved while the fuel consumption is greatly reduced, creating value for customers.

适应性强

VERSATILE



标配1.1m³强化斗, 斗容大, 作业效率高; 不易粘斗, 装载效率更高; 专业强化设计, 更耐用; 可配岩石斗齿, 耐磨性更好。

Standard high efficient reinforced bucket of 1.1m³ capacity; Loading efficiency is high because soil is hardly stuck on it; durable with enhanced design; Can be equipped with rock teeth for higher abrasion resistance.



选配1.0m³岩石斗, 大幅降低斗齿切入阻力, 挖掘更有力; 降低了岩石对斗底的磨损和冲击, 铲斗更耐用, 提升了整机的稳定性, 操作更舒适。

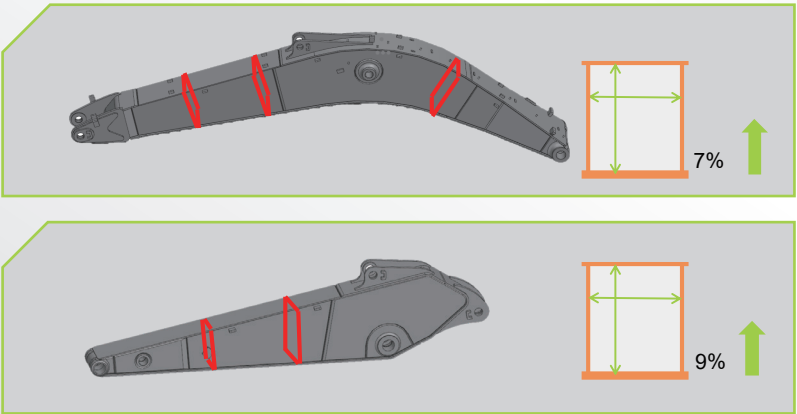
The optional 1.0m³ rock bucket is powerful during digging by greatly reducing the cutting resistance of bucket teeth; The bucket is more durable by reducing the wear and impact of the rock on the bottom of the bucket. The stability of the whole machine is improved, and the operation is more comfortable.

铲斗类型 Bucket type	铲斗容量 Capacity (m³)	适用物料密度 Applicable material density (kg/m³)	选择建议 Advice for choice
强化斗 Reinforced bucket	1.1	1500	挖掘较轻的松散物料 Digging light or loose materials
岩石斗 Rock bucket	1.0	1800	挖掘砂石等高磨损工况 High abrasion applications like quarry or rock
定制斗 (强化斗带岩石斗齿) Customized bucket (Reinforced bucket with rock teeth)	1.1	1500	挖掘较轻的松散物料, 耐磨性更好 Digging light or loose materials, but need higher abrasion resistance



可靠耐久

RELIABLE AND DURABLE



动臂与斗杆采用大截面箱体设计，整体截面动臂增加7%，斗杆增加9%，承载面积加大，可承载应力更大；

The boom and arm are designed with large cross section. The overall cross section of the boom and arm is increased by 7% and 9% respectively. The stress bearing capacity is greater with larger cross section;

铰点处采用高强度锻件结构，保证高强度、长寿命。

The hinge joints adopt high-strength forging structure to ensure high strength and long service life.



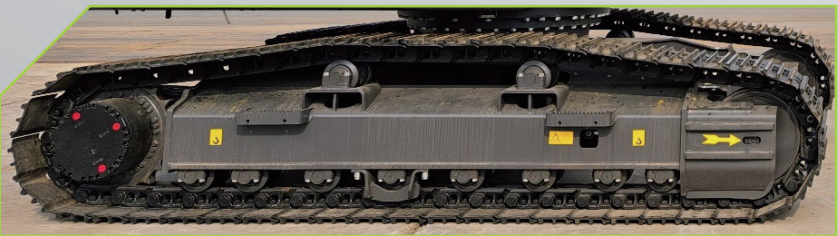
支重轮用作托链轮，双侧支撑，抗弯抗扭能力更高，使用寿命更长，更有效地防止履带脱轨。

The track roller is used as carrier roller. The service life of the track roller is longer with higher bending and torsional resistance since it is supported on both sides. The track derailment is avoided more effectively.



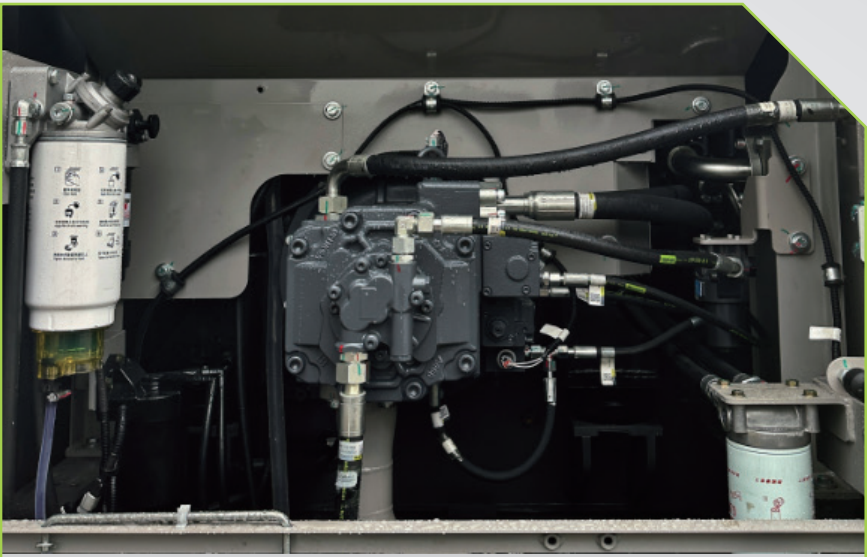
上车体加高115mm，外观更高大，视觉气场足。

The upper body height is increased by 115mm. It is of luxury size and attractive appearance.



标配8个支重轮，整机重量增加，作业更稳定。

Standard 8 track rollers , and the weight of the whole machine is increased, so the operation is more stable.

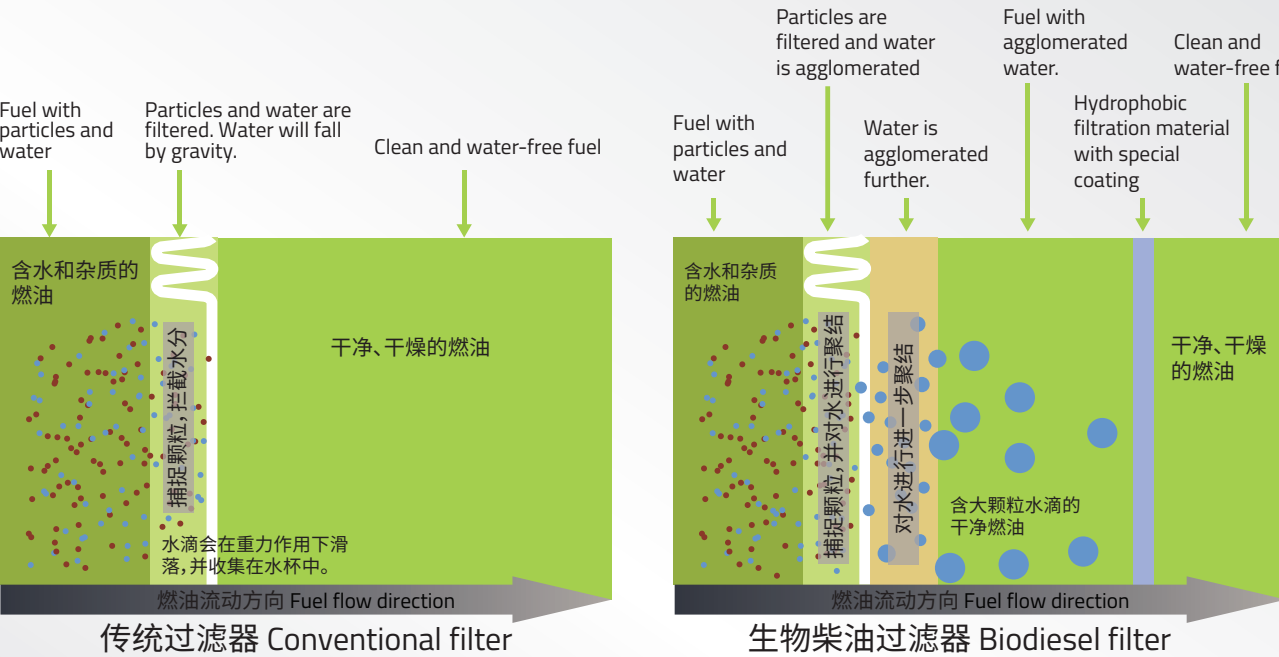


采用三级燃油过滤器，杂质过滤效率更高，为发动机提供更纯净的燃油，减少发动机燃油系统故障；

Three-stage fuel filters are used for higher particle filtration efficiency, providing more pure fuel for the engine and reducing engine fuel system failures;

全新开发的生物柴油专用油水分离器，滤芯使用寿命不打折。

The newly developed fuel-water separator is a dedicated filter for biodiesel. The filter element maintenance interval is not shortened.



生物柴油中杂质较多，且添加剂的使用会降低油水的结合张力，水滴多为乳化水，水滴直径更小，油水分离变得困难；

传统过滤器滤芯：单层滤纸，滤纸既要过滤杂质又要过滤水；

生物柴油滤芯：采用聚结过滤方案，双层滤纸，外层滤纸主要过滤杂质及大颗粒水滴，内层滤纸过滤小颗粒水滴。

Biodiesel contains more particles, and the use of additives will reduce the binding tension of fuel and water. Water droplets are mostly emulsified water, and the diameter of water droplets is smaller, so the separation of fuel and water becomes difficult;

Conventional filter element: single-layer filter paper to filter both particles and water;

Biodiesel filter element: Use agglomerating filtration method and double-layer filter paper. The outer filter paper mainly filters particles and large water droplets; the inner filter paper filters small water droplets.



# 安全舒适

## SAFE AND COMFORTABLE



杯托  
Cup holder



储物箱  
Storage box



点烟器  
Cigarette lighter



AUX接口  
AUX port



一键启动  
Push start



大尺寸触摸屏  
Large size touch screen

新一代G系列驾驶室宽敞明亮, 大面积强化玻璃, 玻璃通透率提升11%以上; 可选配ROPS认证的驾驶室, 更安全。

The new generation of G series cab is spacious and bright, with a large area of reinforced glass, and the glass transmittance is increased by more than 11%; Optional ROPS certified cab for greater safety.

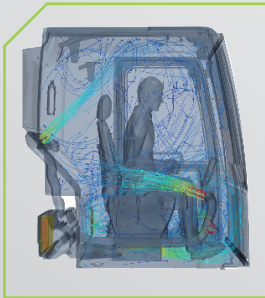


标配后视摄像头, 后方视野在显示屏上清晰可见, 行走操作更省心、更安全。

The rear view is clearly visible on the monitor thanks to the rear-view camera as standard feature. Travel operation is easier and safer.



The 135mm large-stroke suspension seat is suitable for drivers of different heights.



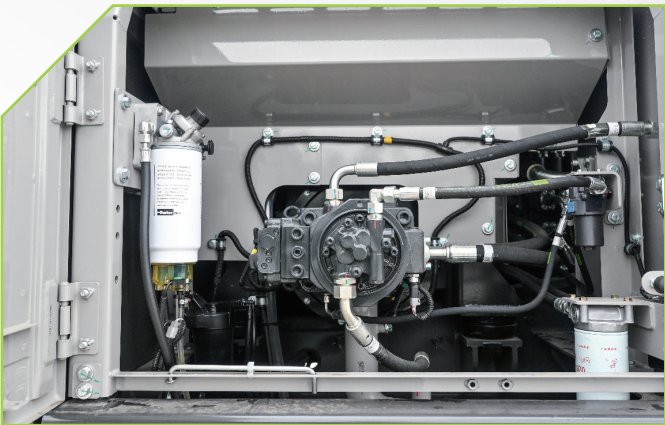
High power air conditioner with optimized air duct.

大功率空调, 风道优化。



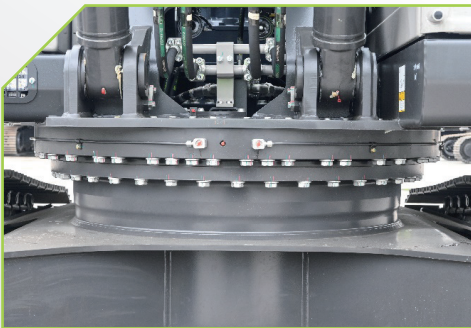
# 保养便捷

## CONVENIENT MAINTENANCE



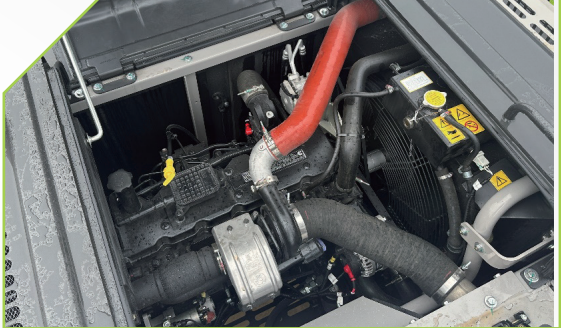
发动机燃油滤清器、机油滤清器、空气滤清器, 液压油先导过滤器、空调滤芯等伸手可及, 实现“一站式”保养。

Engine fuel filters, oil filter, air cleaner, hydraulic oil pilot filter and A/C filter are easily accessible at ground level, achieving "one-stop" maintenance on the ground.



回转支承与动臂采用集中润滑, 打黄油更便捷。

Centralized lubrication of slewing bearing and boom make it more convenient for greasing.



发动机舱空间大, 机罩采用三段式, 开启更轻松, 发动机检视、维修、保养更方便。

The engine compartment is large, and the hood is divided into three sections, which makes it easier to open. Inspection and maintenance of the engine is convenient.



## 客户服务 CUSTOMER SERVICE



中联重科的愿景是“思想构筑未来”。这不仅仅是一句简单的口号，而是超越客户期望的不可动摇的决心。中联重科一直秉持这一理念，并在为客户所做的每一件事中努力践行这一理念。我们为客户提供的服务是想客户所想，急客户所急。

Zoomlion's slogan is "Vision creates future". It is not just a simple slogan, but an unshakable determination to exceed our customer's expectations. Zoomlion has always upheld this belief and tries to implement it in everything that we do for customers. The service we offer to customers is to think about what they think about and worry about what they worry about.

中联重科承诺，一旦您选择了我们，我们将随时做好响应准备，在任何时间、任何地点第一时间到达并提供解决方案。

Zoomlion promises that once you choose us, we are ready to respond with the first arrival and solution any time, anywhere.

中联重科随时提供各种服务内容、专业服务团队、全球服务网络和系统化的技术支持，无论您身处世界何时何地，均可应您的要求提供有效的响应和解决方案。

Various service content, professional service teams, global service networks and systematic technical support are readily available from Zoomlion for an effective response and solution upon your request no matter where you are in the world and what time it is.

## 属具 ATTACHMENTS

挖掘机通过安装不同的属具可扩展出不同的功能，进一步提高工作效率。

Excavators can be used for different functions by installing different attachments, further improving efficiency.

安装中联重科提供的属具，可获得更好的稳定性与性能。通过使用中联重科快换装置，可轻松更换不同属具。

Better stability and performance can be achieved by installing Zoomlion attachments. Attachments can be easily replaced by using Zoomlion quick coupler.



三角破碎锤  
Side-mount hammer



直型破碎锤  
Top-mount hammer



松土器  
Ripper



双缸液压剪（混凝土型）  
Dual-cylinder Hydraulic Shear  
(Concrete)



双缸液压剪（废钢型）  
Dual-cylinder Hydraulic Shear  
(Scrap Steel)



鹰嘴剪  
Scrap Shear

更多可用属具，请联系中联重科。

Please contact with ZOOMLION for more available attachments.

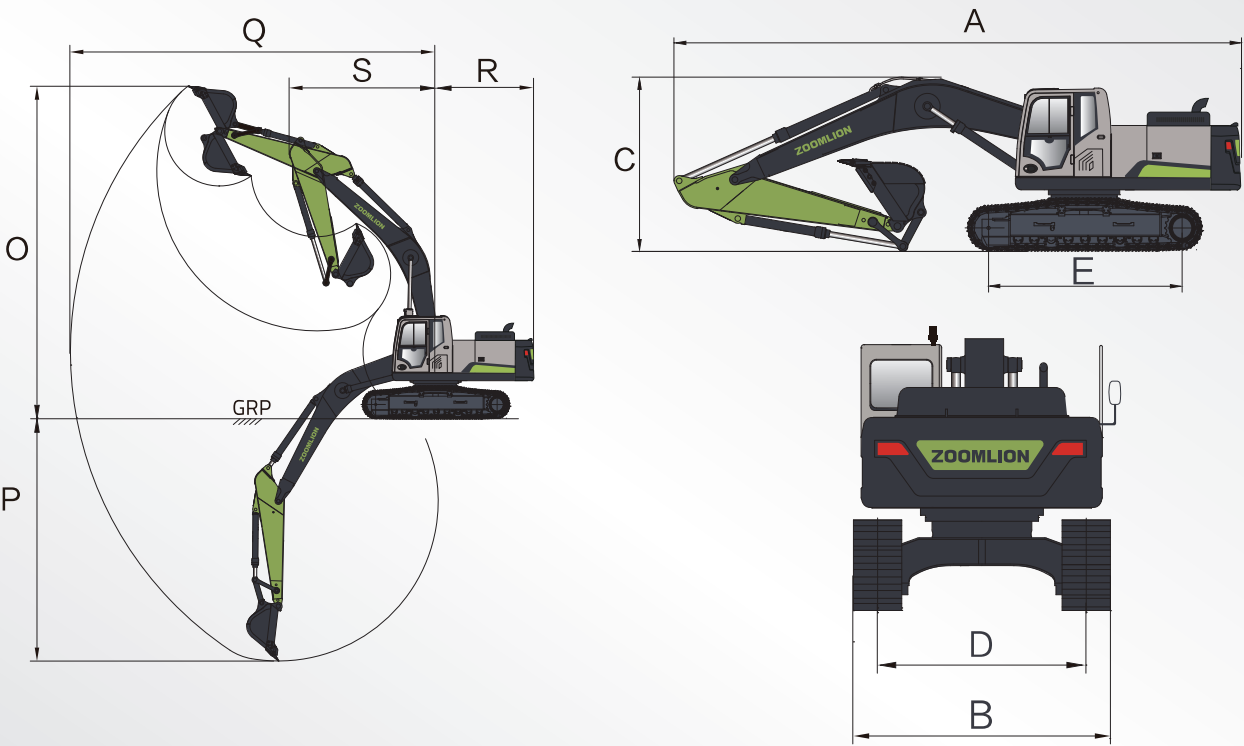


技术参数

TECHNICAL SPECIFICATIONS

		ZE215G	ZE215G Pro
发动机 ENGINE			
品牌 Brand	康明斯 Cummins		
型号 Model	QSB7		
额定功率 Rated power	134kW@2100rpm		
排量 Displacement	6.7 L		
液压系统 HYDRAULIC SYSTEM			
主泵 Main pump	2个变量柱塞泵,最大流量:2×234 L/min Two variable displacement piston pumps Maximum flow: 2×234 L/min		2个变量柱塞泵,最大流量:2×221 L/min Two variable displacement piston pumps Maximum flow: 2×221 L/min
先导泵 Pilot pump	1个齿轮泵,最大流量:18 L/min One gear pump Maximum flow: 18 L/min		1个齿轮泵,最大流量:22 L/min One gear pump Maximum flow: 22 L/min
最大压力 – 工作油路 Maximum pressure - Equipment	34.3 MPa		34.3 MPa
最大压力 - 回转 Maximum pressure - Swing	25.5 MPa		25.5 MPa
最大压力 – 行走 Maximum pressure - Travel	34.3 MPa		34.3 MPa
最大压力 – 增压模式 Maximum pressure - Boost	37.0 MPa		37.3 MPa
最大压力 – 先导系统 Maximum pressure – Pilot system	3.9 MPa		3.9 MPa
上车平台 UPPER FRAME			
最大回转速度 Maximum swing speed	12 r/min		
最大回转扭矩 Maximum swing torque	68 kNm		
底盘结构 UNDERCARRIAGE			
托链轮数量(每侧) Number of carrier rollers (each side)	2 (双侧支撑支重轮式)		2 (Two sides supported track rollers)
支重轮数量(每侧) Number of track rollers (each side)	8		
夹轨器数量(每侧) Number of track guide (each side)	1		
行走速度(高) Travel speed (high)	5.4 km/h		
行走速度(低) Travel speed (low)	3.4 km/h		
最大牵引力 Maximum drawbar pull	210 kN		
爬坡能力 Gradeability	70%		
维护保养加注容量 SERVICE REFILL CAPACITIES			
燃油箱容积 Fuel tank	360 L		
发动机冷却液 Engine coolant	30 L		
发动机油 Engine oil	26 L		
回转装置 Swing drive	4 L		
行走装置(每侧) Final drive (each side)	5 L		
液压系统 Hydraulic system	230 L		
液压油箱 Hydraulic tank	130 L		
工作装置 WORK EQUIPMENT			
动臂长度 Boom length	5700 mm		
斗杆长度 Arm length	2925 mm		

	ZE215G / ZE215G Pro
整机尺寸 OVERALL DIMENSIONS	
A 总长度 A Overall length	9650 mm
B 总宽度 B Overall width	2990 mm
C 总高度 C Overall height	3150 mm
D 履带轨距 D Track gauge	2390 mm
E 履带轴距 E Length of track on ground	3470 mm
作业范围 WORKING RANGE	
O 最大挖掘高度 O Maximum digging height	10010 mm
P 最大挖掘深度 P Maximum digging depth	6660 mm
Q 最大挖掘距离 Q Maximum digging reach	9900 mm
R 尾部回转半径 R Tail swing radius	2935 mm
S 前部最小回转半径 S Front minimum swing radius	3200 mm





标配&选配
 STANDARD & OPTIONAL FEATURES

分类Category	配置项Features	ZE215G / ZE215G Pro
动力系统 Powertrain	空气滤清器 Air cleaner	●
	旋流式空气预滤器 Swirl type air pre-cleaner	●
液压系统 Hydraulic system	多属具管路 Attachments plumbing	○
	快换管路 Quick coupler plumbing	○
	破碎管路 Hammer plumbing	○
驾驶室 Cab	ROPS	○
	细网格防护 Mesh guard	○
	栅格防护 Skeleton guard	○
	灭火器 Fire extinguisher	●
	机械悬浮座椅 Mechanical suspension seat	●
	冷暖空调 Air conditioner	●
	遮阳帘 Sunshade curtain	○
下车 Undercarriage	600mm履带 600mm track	●
	700mm履带 700mm track	○
	800mm履带 800mm track	○
电气 Electrical system	声光报警器 Acousto-optic alarm	○
	急停开关 Emergency stop	●
	24V电源接口 24V DC outlets	●
	后视摄像头 Rearview camera	●
	驾驶室前灯 Cab front light	●2个 2pcs
	动臂工作灯 Boom light	●2个 2pcs
	转台灯 Upper frame light	●1个 1pc
	燃油加注泵 Refilling pump	○
	GPS	●
	AM/FM收音机 AM/FM radio	●
其他 Others	油缸护套 Cylinder sleeve	○
	驾驶室后视镜 Cab rear mirror	●1个 1pc
	扶手后视镜 Handrail rear mirror	●1个 1pc

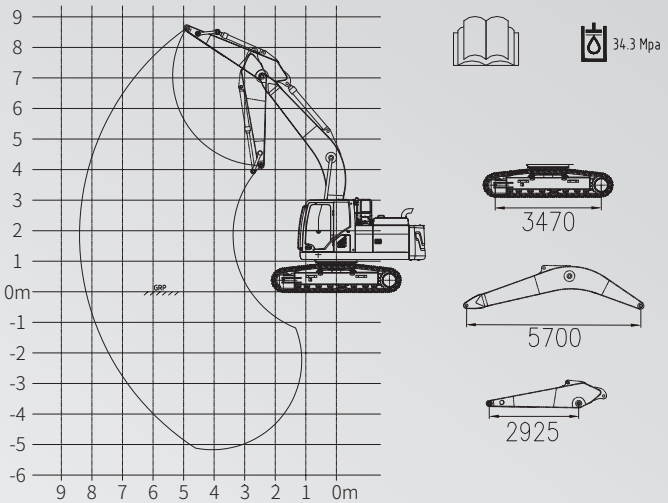
● 标配Standard
 ○ 选配Optional

起吊能力表

LIFT CAPACITY

在规定的起吊点半径和高度下，不要起吊大于额定值的负载。  
 Do not attempt to lift or hold any load that is greater than these rated values at their specified lift-point radius and height.

起吊点位于斗杆与铲斗连接的销轴孔中心。  
 The lift point is located at the centreline of the bucket pivot mounting pin on the arm.



LPH	额定起吊能力 (kg) Rated lift capacity (kg)												
	LPR										最大半径处的起吊能力 Lift capacity at maximum radius		
	1.5m		3.0m		4.5m		6.0m		7.5m				
m	纵向 End	侧向 Side	纵向 End	侧向 Side	纵向 End	侧向 Side	纵向 End	侧向 Side	纵向 End	侧向 Side	纵向 End	侧向 Side	m
7.5							*4238	*4238			*3509	*3509	6.20
6.0							*4672	*4672			*3280	*3280	7.30
4.5					*5918	*5918	*5174	*5174	*4853	3732	*3241	*3241	7.97
3.0					*7620	*7602	*5961	5053	5159	3615	*3338	3065	8.32
1.5					*9196	7157	*6772	4786	5019	3485	*3516	2953	8.40
0			*7090	*7090	*10060	6859	6786	4597	4914	3389	*3909	3607	8.19
-1.5	*7495	*7495	*11230	*11230	*10164	6784	6701	4520	4890	3366	*4684	3264	7.69
-3.0	*11723	*11723	*13515	13334	*9518	6856	6741	4559			5654	3879	6.82
-4.5			*10796	*10796	*7706	7101					*6088	5492	5.42

标有星号(\*)的值受液压能力限制,见注2。  
 Capacities marked with an asterisk (\*) are limited by hydraulic capacities. See Note 2.

- 吊索和任何辅助起吊装置的重量应从额定载荷中扣除，以确定可提升的净载荷。  
The mass of slings and any auxiliary lifting devices shall be deducted from the rated load to determine the net load that may be lifted.
- 起吊能力是基于机器位于坚实的，均匀的支撑表面，使用者应考虑到松软或不平整的地面等工作条件。  
Lift capacities are based on the machine standing on a firm, uniform supporting surface. The user shall make allowances for job conditions such as soft or uneven ground.
- 操作人员在操作机器前，应充分熟悉制造商提供的操作手册和安全手册。  
The operator should be fully acquainted with the *Operator's Manual* and the *Operating Safety Manual* furnished by the manufacturer before operating the machine.

- 注1:所示的起吊能力是没有启用增压模式的。  
NOTE 1 Lift capacities shown are without the power boost feature engaged.
- 注2:所示的起吊能力不超过最小倾翻载荷的75%或液压能力的87%。  
NOTE 2 Lift capacities shown do not exceed 75% of minimum tipping loads or 87% of hydraulic capacities.
- 注3:最不稳定的位置在侧面。  
NOTE 3 The least stable position is over the side.
- 注4:起吊能力仅适用于制造商最初制造并正常配置的机器。  
NOTE 4 Lift capacities apply only to the machine as originally manufactured and normally equipped by the manufacturer.
- 注5:整机总质量为22000kg，包括600mm的三筋履带、5.7m的动臂、2.925m的斗杆、3950kg的配重、所有的工作液体和一个75kg的操作人员。  
NOTE 5 The total mass of the machine is 22000kg. Included in this mass are 600mm triple grouser shoes, 5.7m boom, 2.925m arm, 3950kg counterweight, all operating fluids and a 75kg operator.
- 注6:起吊能力符合ISO 10567:2007。  
NOTE 6 Lift capacities are in compliance with ISO 10567:2007.



**VISION  
CREATES  
FUTURE**

