

科技中联，匠心相伴 ZOOMLION TECHNOLOGY WITH INGENUITY AND CARE



全球领先的挖掘机智能制造工厂

The world's leading excavator intelligent manufacturing factory

中联智慧产业城土方机械园区拥有行业领先的智能化、柔性化的挖掘机工厂，从一块钢板到一台挖掘机，以高精度的焊接工艺、高可靠的装配工艺、高级别的涂装工艺和严苛的品质管控，让每一台交付的挖掘机都具备极致品质。

Zoomlion Smart City Earthmoving Machinery Park is an industry-leading intelligent and flexible excavator factory. From a piece of steel plate to an excavator, with high-precision welding process, highly reliable assembly process, high-level coating process and strict quality control, each excavator is delivered with ultimate quality.

ZOOMLION

Zoomlion Heavy Industry Science & Technology Co.,Ltd.

Add: No.361, South Yipen Road, Changsha, Hunan Province, P.R.China 410013 Email: earthmoving@zoomlion.com
Copyright©2025 Zoomlion. All rights reserved. Reproduction and copying of any part of contents is not allowed for any purposes without Zoomlion's approval.
Note: Materials and specifications are subject to change without notice. Featured machines in photos may include additional equipment.



MIDDLE EAST

ZOOMLION 21-TONNAGE CRAWLER HYDRAULIC EXCAVATOR

中联重科21吨级履带式液压挖掘机
ZE215G/ZE225G Pro



ZOOMLION

VISION CREATES FUTURE

思想构筑未来

ZE215G

Engine rated power (发动机功率) : 133 kW/2000 rpm
Operating weight (操作重量) : 22000kg
Bucket capacity (斗容) : 0.85~1.1m³

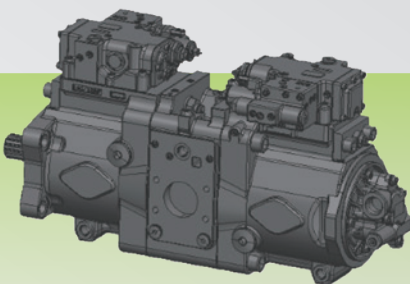
ZE225G Pro

Engine rated power (发动机功率) : 134 kW/2100 rpm
Operating weight (操作重量) : 22500kg
Bucket capacity (铲斗容量) : 1.0~1.2m³

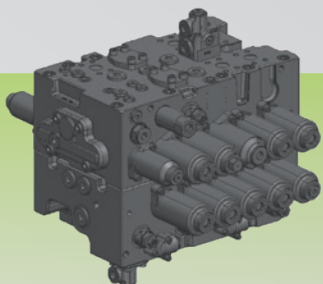


ADAPTABILITY IMPROVEMENT

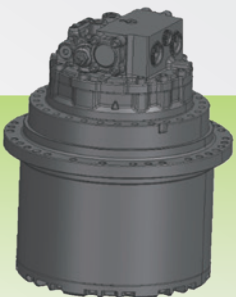
完美适配性



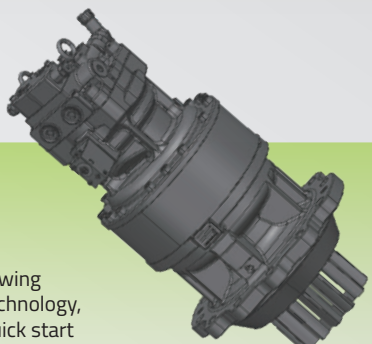
The large-displacement main pump has a maximum working pressure of up to 37.3MPa (pressure boost mode), which guarantees heavy load. The flows of two pumps merge to achieve faster speed. The pump has a lower working rotational speed and lower noise.
大排量主泵，最高工作压力可达37.3MPa(增压模式)，重载有保障；双泵合流，速度更快；更低的工作转速，噪音更低。



The large-diameter main valve has an optimized core structure, which reduces the pressure loss in the oil passage and improves the coordination of composite actions.
大通径主阀，阀芯结构针对性优化，降低了油道压力损失，提升了复合动作协调性。



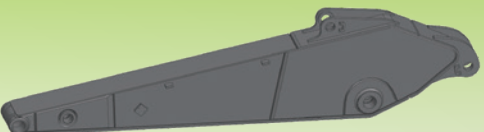
The high-torque travel motor reaching the top level in the industry, and provides excellent traveling, turning and climbing capabilities.
大扭矩行走马达达到行业顶尖水平，提供优异的行走、转弯与爬坡能力。



Large-displacement swing motor with mature technology, large swing torque, quick start and fast swing speed.
大排量回转马达，技术成熟，回转扭矩大，启动迅速，回转速度快。



Adopting a large-section box design, in which the overall cross-section of the boom is increased by 7% and the bucket arm is increased by 9%, achieving an enlarged load-bearing area and greater carrying capacity.
采用大截面箱体设计，整体截面动臂增加7%、斗杆增加9%，承载面积加大、承载能力更大；

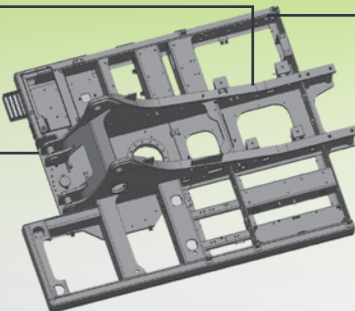


The hinge point adopts high-strength forging structure to ensure high strength and long life.
铰点处采用高强度锻件结构，保证高强度、长寿命。

Heightened I-shaped main beam.
加高型工字主梁

Increased main frame cutting area and improved body rigidity

加大主车架截面积，车体刚度提升

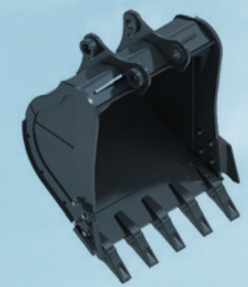


The side beams are upgraded from C-shaped beams to D-shaped beams, and a stronger upper frame structure, compared with the previous generation model, the cross-sectional area is improved by 37%, and the strength is improved

边梁由C型升级为D型，上车框架结构强度更高，相比上一代机型，截面积提升37%，强度提升

ADAPTABILITY IMPROVEMENT

完美适配性



- Standard high efficient reinforced bucket;
- Loading efficiency is high because soil can hardly be stuck on it;
- Durable with enhanced design;
- Can be equipped with rock teeth for higher abrasion resistance.

- 标配强化斗，斗容大，作业效率高；
- 不易粘斗，装载效率更高；
- 专业强化设计，更耐用；
- 可配岩石斗齿，耐磨性更好。



- The optional rock bucket is powerful during digging by greatly reducing the cutting resistance of bucket teeth;
- The bucket is more durable by reducing the wear and impact of the rock on the bottom of the bucket. The stability of the whole machine is improved, and the operation is more comfortable.

- 选配岩石斗，大幅降低斗齿切入阻力，挖掘更有力；
- 降低了岩石对斗底的磨损和冲击，铲斗更耐用，提升了整机的稳定性，操作更舒适。

Bucket type 铲斗类型	Capacity(m³) 铲斗容量	Model 机型	Applicable material density (kg/m³) 适用物料密度	Advice for choice 选择建议
Reinforced bucket 强化斗	1.1	ZE215G	1500	Digging light or loose materials 挖掘较轻的松散物料
	1.2	ZE225G Pro		
Rock bucket 岩石斗	1.0	ZE225G Pro	1800	High abrasion applications like quarry or rock 挖掘砂石等高磨损工况
	0.85	ZE215G		
Customized bucket (Reinforced bucket with rock teeth) 定制斗（强化斗带岩石斗齿）	1.1	ZE215G	1500	Digging light or loose materials, but need higher abrasion resistance 挖掘较轻的松散物料，耐磨性更好
	1.2	ZE225G Pro		

E-COT控制系统



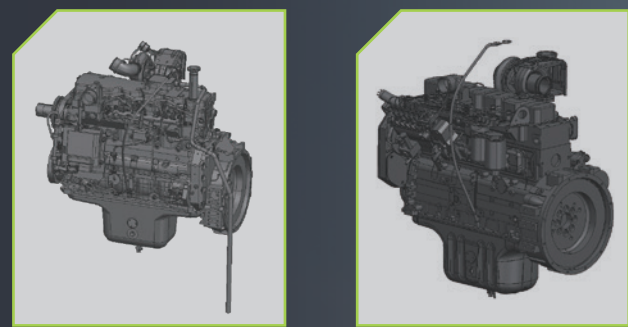
E-CoT™(Excavator Condition Auto-Optimization Technology): The controller collects operating handle action pressure and load analysis, and cooperates with self-learning control technology to optimally match torque and flow, reduce energy loss, improve machine controllability and fuel efficiency.

E-CoT™(Excavator Condition Auto-Optimization Technology) 通过控制器采集操作手柄动作压力和负载分析，配合自学习控制技术，对扭矩和流量进行最优匹配，减少能量损失，提高整机操控性和燃油效率性。

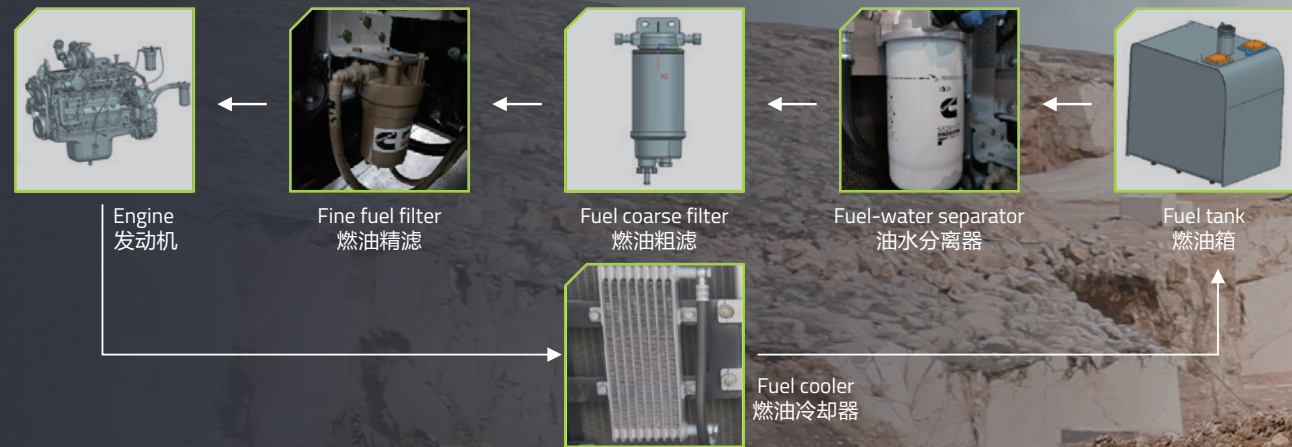
NOTE: The ZE225G Pro is equipped by E-CoT™
注：ZE225G Pro 搭载 E-CoT™

CONFIGURATION & EFFICIENCY

配置及效率



The ZE215G uses a 6-cylinder Cummins classic engine.
ZE225G_{Pro} uses Cummins 6-cylinder engine, which applies high-pressure common rail technology, and the new electronic control system optimizes engine performance. Therefore, the whole machine has better fuel economy.
The power of the ZE215G/ZE225G_{Pro} engine is nearly 20% higher than that of the previous generation model. It is more powerful, has smoother output, and works more powerfully and faster.
For the Middle East, The ZE215G/ZE225G_{Pro} engine uses a custom engine, making the engine more reliable and durable.
ZE215G 采用 6 缸康明斯经典发动机。
ZE225G_{Pro} 采用康明斯 6 缸发动机，应用高压共轨技术，新型电控系统优化了发动机性能，整机具有更卓越的燃油经济性。
ZE215G/ZE225G_{Pro} 发动机较上一代机型功率提高近 20%，动力更强劲、输出更平稳，干活更有力、更快。
针对中东地区工况，ZE215G/ZE225G_{Pro} 发动机使用定制化发动机，使得发动机更可靠更耐用。



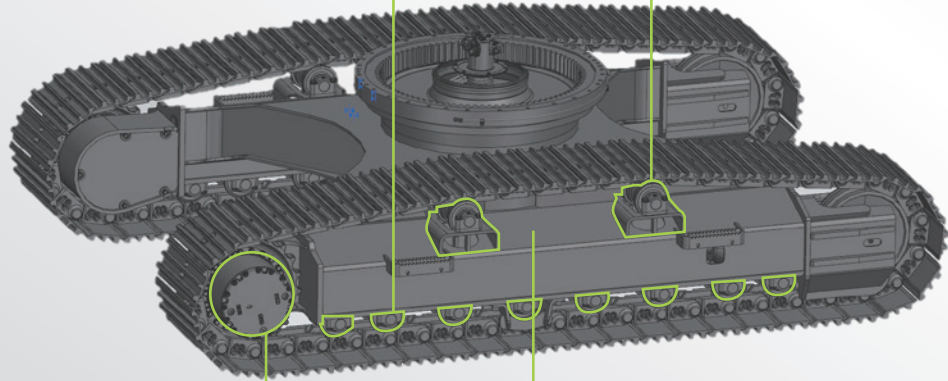
- The three-stage large-capacity high-precision filtration system has a fuel fine filtration accuracy of 5 microns, the filter accuracy of fuel coarse filter reaches 8 microns, an oil-water separator filtration accuracy of 30 microns, and a comprehensive impurity filtration rate of 99.9%;
- The fuel cooling radiator accurately controls the fuel temperature to maintain the best working condition of the engine.
- 三级大容量高精度过滤系统，燃油精滤过滤精度5微米，燃油粗滤的过滤精度达到8微米，油水分离器过滤精度30微米，综合杂质过滤达到99.9%；
- 燃油冷却散热器，精准控制燃油温度，保持发动机最佳工作状态。



RELIABILITY & DURABILITY

可靠与耐用

- ZE215G equipped with 8 track rollers
- ZE225G Pro equipped with 9 track rollers
- ZE215G配备8个支重轮
- ZE225G Pro配备9个支重轮



- The track roller is used as a carrier roller, and the carrier roller is supported on both sides, which has stronger load-bearing performance and effectively prevents derailment.
- 支重轮作托链轮，托链轮双侧支撑，承载性能更强，有效防止脱轨

- High-torque travel motor, traveling draw-bar pull upgraded to 210kN, suitable for harsh terrains
- 大扭矩行走马达，行走牵引力升级到210kN，适应严苛地形

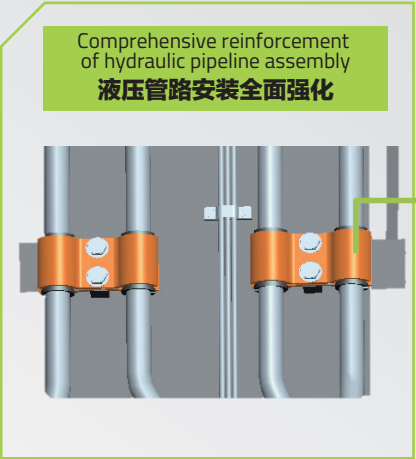
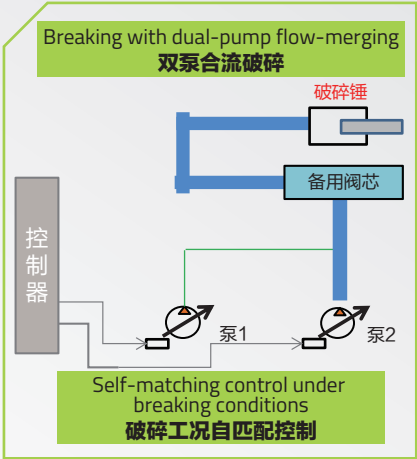
- The large slope design of the crawler side beams effectively reduces soil accumulation and ensures smooth traveling.
- 履带边梁大边坡设计，有效减少泥土堆积，确保行走顺畅

In view of the high temperature in Middle East, a parallel type is adopted to increase the cooling system. The oil radiator, water radiator and intercooler work independently and do not interfere with each other, so the heat dissipation efficiency is higher; the frame of the radiator group is strengthened, making it stronger and more resistant to vibration; the condenser is installed in a hinged manner, which makes it easy to clean accumulated dust, catkins and other debris.

针对中东高温天气，采用并联式加大散热系统，油散、水散、中冷器散热独立工作、互不干扰，散热效率更高，散热组框架加强，更加牢固抗震动；冷凝器采用铰链式安装，方便清洗堆积灰尘柳絮等杂物。



- The crushing pipeline is equipped with crushing mode working condition self-matching control technology, which increases the breaking efficiency by more than 4%. The hydraulic pipeline installation is fully strengthened, and the pipe clamp is widened and thickened, making it more breaking. The breaking flow rate is adjustable to adapt to different breakers.
- 破碎管路搭载破碎模式工况自匹配控制技术，破碎效率提升4%以上；液压管路安装全面强化，管夹加宽加厚，更耐用；破碎流量可调，适应不同破碎锤。



- The air filter with high filtration efficiency and large dust capacity, combined with the maintenance-free air pre-filter, can effectively protect the engine and ensure long-term operation even in harsh working environments.
- For high dust environments, ZE215G/ZE225G Pro can be equipped with an optional oil bath air pre-filter.
- In view of the high temperature in Middle East, ZE215G/ZE225G Pro increased air inlet area of the left rear door.
- 高过滤效率和大容灰量的空气过滤器，搭配免维护的空气预滤器，即使在恶劣的工作环境中，也能有效地保护发动机，保证长久地工作。
- 针对高粉尘环境，ZE215G/ZE225G Pro可选配油浴式空气预滤器。
- 针对中东高温天气，ZE215G/ZE225G Pro左后门进风面积加大。

COMFORT & INTELLIGENCE

舒适与智能



- Large touch screen
- The standard rearview camera
- 大尺寸触摸屏
- 标配后视摄像头



- Push start
- 一键启动



- Cup holder
- 杯托

- USB
- Bluetooth(蓝牙)
- Data Transmission (数据传输)



- Highly integrated control panel
- 高集成化 控制面板



- Special suspension seat of large stroke full wrapping experience
- 大行程专用悬浮座椅全包裹体验



- Compared with the previous generation cab, the cooling effect of the new generation cab is increased by more than 19%
- 新一代驾驶室相比上一代驾驶室，制冷降温效果提高19%以上



- Superb all-round visibility thanks to large window areas, with increased glass transmittance above 11%
- Customers can choose the sunshade
- 大面积环绕式玻璃，玻璃通透率提升11%以上
- 客户可选配遮阳帘

CONVENIENT MAINTENANCE

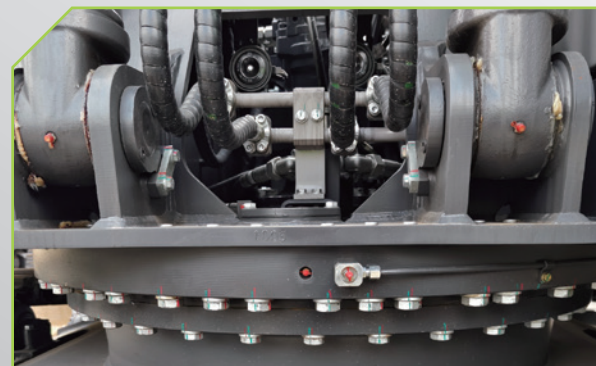
维保便捷



Engine air filter monitoring and maintenance are quick and easy, and the operation space is large.
发动机空滤监测与保养均快捷,操作空间大。



The inspection and maintenance of the oil filter, diesel filter and pilot filter are all within easy reach, realizing one-stop maintenance.
机油滤、柴油滤、先导滤的检视与保养均伸手可及,实现一站式保养。



Added with the centralized lubrication function of the slewing bearing to make maintenance more convenient.
增加回转支承集中润滑功能,保养更方便。



Engine room space is larger, and inspection, repair, maintenance are more convenient.
发动机舱空间更大, 检视、维修、保养更方便。

CUSTOMER SERVICE

客户服务

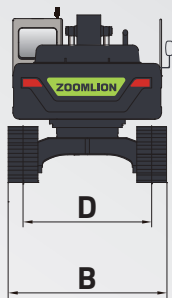
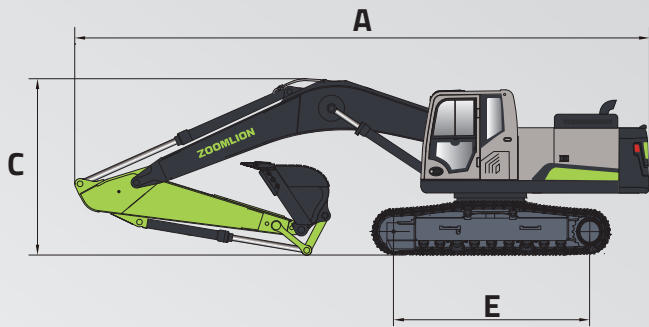
Zoomlion 's service engineers are located in various key countries around the world. According to the distribution of customers' equipment engineers will be stationed in that country for a long time.If customers need it, our mission will be fulfilled. Every year, Zoomlion 's service engineers carry out a service trip to visit new and old customers. We collect reasonable opinions, and listen carefully to customer service requests. We meet the needs of customers in a timely manner and respond to the reasonable needs of customers. We train the operators of each piece of equipment to ensure the stable operation of the equipment. 中联重科的服务工程师分布在全球各个重点国家，根据客户设备分布情况，工程师长期驻点该国家，客户有需要，我们使命必达。每年中联重科服务工程师都会开展服务万里行活动，针对新老客户拜访。针对合理性意见进行收集，用心听取客户服务诉求。我们及时满足客户的需求，响应客户合理需求。我们对每台设备的机手都要进行培训，全力保障客户设备稳定运转。



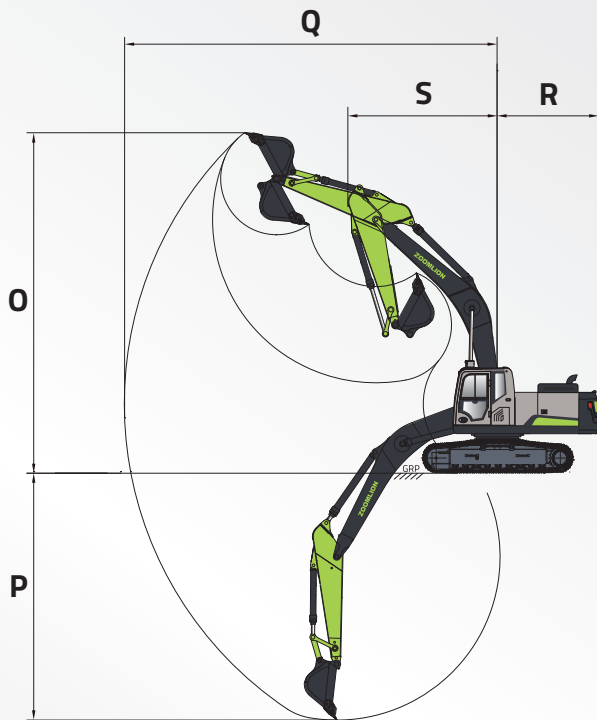
ZE215G	
Engine（发动机）	
Manufacture品牌	Cummins 康明斯
Model型号	6BTA5.9
Rated power额定功率	133 kW@2000 rpm
Displacement排量	5.9 L
Hydraulic system（液压系统）	
Main pump主泵	Two variable displacement piston pumps 2个变量柱塞泵 Maximum flow最大流量: 2×226 L/min
Pilot pump先导泵	One gear pump 1个齿轮泵 Maximum flow最大流量: 19.5 L/min
Maximum pressure - Equipment 工作油路	34.3 MPa
Maximum pressure - Swing 回转油路	25.5 MPa
Maximum pressure - Travel 行走油路	34.3 MPa
Maximum pressure – Pilot system 先导油路	3.9 MPa
Maximum pressure - Boost 增压模式	37.3 MPa
Undercarriage（底盘结构）	
Number of carrier rollers (each side) 托链轮数量（每侧）	2 (Two sides supported track rollers) 2（双侧支撑支重轮式）
Number of track rollers (each side) 支重轮数量（每侧）	8
Travel speed (high) 行走速度（高）	5.4 km/h
Travel speed (low) 行走速度（低）	3.4 km/h
Maximum drawbar pull 最大牵引力	210 kN
Gradeability 爬坡能力	70 %
Swing mechanism（回转机械装置）	
Maximum swing speed 最大回转速度	12 r/min
Maximum swing torque 最大回转扭矩	68 kNm
Service refill capacities（维护保养加注容量）	
Fuel tank 燃油箱容积	360 L
Engine coolant 发动机冷却液	30 L
Engine oil 发动机油	24 L
Swing drive 回转装置	4 L
Final drive (each side) 行走装置（每侧）	5 L
Hydraulic system 液压系统	230 L
Hydraulic tank 液压油箱	130 L
Working device（工作装置）	
Boom length 动臂长度	5700 mm
Arm length 斗杆长度	2925 mm

ZE225G Pro	
Engine（发动机）	
Manufacture品牌	Cummins 康明斯
Model型号	Q5B7
Rated power额定功率	134 kW@2100 rpm
Displacement排量	6.7 L
Hydraulic system（液压系统）	
Main pump主泵	Two variable displacement piston pumps 2个变量柱塞泵 Maximum flow最大流量: 2×221 L/min
Pilot pump先导泵	One gear pump 1个齿轮泵 Maximum flow最大流量: 22 L/min
Maximum pressure - Equipment 工作油路	34.3 MPa
Maximum pressure - Swing 回转油路	25.5 MPa
Maximum pressure - Travel 行走油路	34.3 MPa
Maximum pressure – Pilot system 先导油路	3.9 MPa
Maximum pressure - Boost 增压模式	37.3 MPa
Undercarriage（底盘结构）	
Number of carrier rollers (each side) 托链轮数量（每侧）	2 (Two sides supported track rollers) 2（双侧支撑支重轮式）
Number of track rollers (each side) 支重轮数量（每侧）	9
Travel speed (high) 行走速度（高）	5.4 km/h
Travel speed (low) 行走速度（低）	3.4 km/h
Maximum drawbar pull 最大牵引力	210 kN
Gradeability 爬坡能力	70 %
Swing mechanism（回转机械装置）	
Maximum swing speed 最大回转速度	12 r/min
Maximum swing torque 最大回转扭矩	68 kNm
Service refill capacities（维护保养加注容量）	
Fuel tank 燃油箱容积	360 L
Engine coolant 发动机冷却液	30 L
Engine oil 发动机油	26 L
Swing drive 回转装置	4 L
Final drive (each side) 行走装置（每侧）	5 L
Hydraulic system 液压系统	230 L
Hydraulic tank 液压油箱	130 L
Working device（工作装置）	
Boom length 动臂长度	5700 mm
Arm length 斗杆长度	2925 mm

ZE215G	
Overall dimension（整机尺寸）	
A Overall length A 总长度	9650 mm
B Overall width B 总宽度	2990 mm
C Overall height C 总高度	3150 mm
D Track gauge D 履带轨距	2390 mm
E Crawler base E 履带轴距	3470 mm
Working range（作业范围）	
O Maximum digging height O 最大挖掘高度	10010 mm
P Maximum digging depth P 最大挖掘深度	6660 mm
Q Maximum digging reach Q 最大挖掘距离	9720 mm
R Rear swing radius R 尾部回转半径	2935 mm
S Front minimum swing radium S 前部最小回转半径	3200 mm



ZE225G Pro	
Overall dimension（整机尺寸）	
A Overall length A 总长度	9650 mm
B Overall width B 总宽度	2990 mm
C Overall height C 总高度	3150 mm
D Track gauge D 履带轨距	2390 mm
E Crawler base E 履带轴距	3660 mm
Working range（作业范围）	
O Maximum digging height O 最大挖掘高度	10010 mm
P Maximum digging depth P 最大挖掘深度	6660 mm
Q Maximum digging reach Q 最大挖掘距离	9900 mm
R Rear swing radius R 尾部回转半径	2935 mm
S Front minimum swing radium S 前部最小回转半径	3200 mm



STANDARD & OPTIONAL EQUIPMENT

标选配

Classification（分类）	Configuration items（配置项）	ZE225G Pro
Engine 发动机	Air filter 空气滤清器	●
	Cyclone air pre-filter 旋流式空气预滤器	●
	Oil bath air pre-filter 油浴式空气预滤器	○
Hydraulic System 液压系统	Breaker pipeline flow adjustment 破碎管路流量调节	○
	Breaker pipeline 破碎锤管路	○
	Attachments pipeline 多属具管路	○
	Quick coupler pipeline 快换管路	○
Cab 驾驶室	Cab 司机室	●
	ROPS	○
	Grid protection 栅格式防护	○
	Fine mesh protection 细网格防护	○
	Top protection 顶防护	○
	Fire extinguisher 灭火器	●
	Air suspension seat 空气悬浮座椅	○
	Mechanical suspension seat 机械悬浮座椅	●
	Heating and cooling air conditioning 冷暖空调	●
	Sunshades 遮阳帘	○
Undercarriage 下车	Ordinary joystick 普通手柄	●
	3-rib reinforced steel track 3筋钢履带	●
	Track 600mm 履带	●
	Track 700mm 履带	○
	Track 800mm 履带	○
	Carrier rollers (each side)托链轮（单侧）	●2个 2pcs
	Track rollers (each side) 支重轮（单侧）	●9个 9pcs
	Undercarriage rail clamp下车夹轨器（单侧）	●2个 2pcs
Electric 电气	Audible and visual alarm 声光报警器	●
	Emergency stop switch 急停开关	●
	Power port 24V电源接口	●
	Rear view camera 后视摄像头	●
	Cab front dome light 驾驶室前顶灯	●2个 2pcs
	Boom work light 动臂工作灯	●2个 2pcs
	Turntable light 转台灯	●1个 1pc
	Fuel filling pump 燃油加注泵	○
	Radio AM/FM收音机	●
Attachments 属具	GPS	●
	Recommended breaker rod diameter 推荐破碎锤钎杆直径	135mm
	Side-mounted breaker 三角破碎锤	○
	Top-mounted breaker 直形破碎锤	○
Others 其他	Cab rearview mirror 驾驶室后视镜	●1个 1pc
	Armrest mirror 扶手后视镜	●1个 1pc
	Cylinder sleeve 油缸护套	○

STANDARD 标配 ●
OPTIONAL 选配 ○

Classification（分类）	Configuration items（配置项）	ZE215G
Engine 发动机	Air filter 空气滤清器	●
	Cyclone air pre-filter 旋流式空气预滤器	●
	Oil bath air pre-filter 油浴式空气预滤器	○
Hydraulic System 液压系统	Breaker pipeline flow adjustment 破碎管路流量调节	○
	Breaker pipeline 破碎锤管路	○
	Attachments pipeline 多属具管路	○
	Quick coupler pipeline 快换管路	○
Cab 驾驶室	Cab 司机室	●
	ROPS	○
	Grid protection 栅格式防护	○
	Fine mesh protection 细网格防护	○
	Top protection 顶防护	○
	Fire extinguisher 灭火器	●
	Mechanical suspension seat 机械悬浮座椅	●
	Heating and cooling air conditioning 冷暖空调	●
	Sunshades 遮阳帘	○
	Ordinary joystick 普通手柄	●
Undercarriage 下车	3-rib reinforced steel track 3筋钢履带	●
	Track 600mm 履带	●
	Track 700mm 履带	○
	Track 800mm 履带	○
	Carrier rollers (each side)托链轮（单侧）	●2个 2pcs
	Track rollers (each side) 支重轮（单侧）	●8个 8pcs
	Undercarriage rail clamp下车夹轨器（单侧）	●1个 1pc
Electric 电气	Audible and visual alarm 声光报警器	●
	Emergency stop switch 急停开关	●
	Power port 24V电源接口	●
	Rear view camera 后视摄像头	●
	Cab front dome light 驾驶室前顶灯	●2个 2pcs
	Boom work light 动臂工作灯	●2个 2pcs
	Turntable light 转台灯	●1个 1pc
	Fuel filling pump 燃油加注泵	○
	Radio AM/FM收音机	●
Attachments 属具	GPS	●
	Recommended breaker rod diameter 推荐破碎锤钎杆直径	135mm
	Side-mounted breaker 三角破碎锤	○
	Top-mounted breaker 直形破碎锤	○
Others 其他	Cab rearview mirror 驾驶室后视镜	●1个 1pc
	Armrest mirror 扶手后视镜	●1个 1pc
	Cylinder sleeve 油缸护套	○

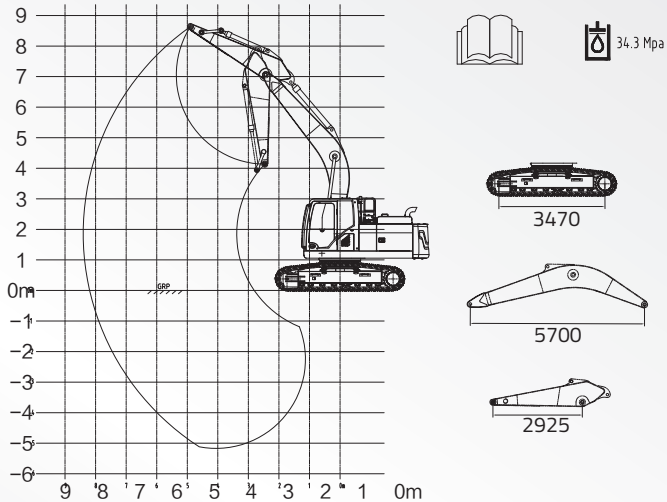
起吊能力表

LIFT CAPACITY

ZE215G

在规定的起吊点半径和高度下，不要起吊大于额定值的负载。
Do not attempt to lift or hold any load that is greater than these rated values at their specified lift-point radius and height.

起吊点位于斗杆与铲斗连接的销轴孔中心。
The lift point is located at the centreline of the bucket pivot mounting pin on the arm.



LPH	额定起吊能力 (kg) Rated lift capacity (kg)												
	LPR										最大半径处的起吊能力 Lift capacity at maximum radius		
	1.5m		3.0m		4.5m		6.0m		7.5m				
m	纵向 End	侧向 Side	纵向 End	侧向 Side	纵向 End	侧向 Side	纵向 End	侧向 Side	纵向 End	侧向 Side	纵向 End	侧向 Side	mm
7.5							*4238	*4238			*3509	*3509	6200
6.0							*4672	*4672			*3280	*3280	7300
4.5						*5918	*5174	*5174	*4853	3732	*3241	*3241	7970
3.0					*7620	*7620	*5961	5050	5159	3615	*3338	3065	8320
1.5					*9196	7160	*6772	4790	5019	3485	*3516	2953	8395
0			*7090	*7090	*1006	6860	6786	4600	4914	3389	*3909	3007	8190
-1.5	*7495	*7495	*1123	*1123	*10164	6780	6701	4520	4890	3366	*4684	3264	7685
-3.0	*11723	*11723	*13515	13334	*9518	6860	6741	4559			5650	3879	6820
-4.5			*10796	*10796	*7706	7100					*6088	5492	5415

标有星号(*)的值受液压能力限制,见注2。
Capacities marked with an asterisk (*) are limited by hydraulic capacities. See Note 2.

- 吊索和任何辅助起吊装置的重量应从额定载荷中扣除，以确定可提升的净载荷。
The mass of slings and any auxiliary lifting devices shall be deducted from the rated load to determine the net load that may be lifted.
- 起吊能力是基于机器位于坚实的，均匀的支撑表面，使用者应考虑到松软或不平整的地面等工作条件。
Lift capacities are based on the machine standing on a firm, uniform supporting surface. The user shall make allowances for job conditions such as soft or uneven ground.
- 操作人员在操作机器前，应充分熟悉制造商提供的操作手册和安全手册。
The operator should be fully acquainted with the *Operator's Manual* and the *Operating Safety Manual* furnished by the manufacturer before operating the machine.

- 注1：所示的起吊能力是没有启用增压模式的。
NOTE 1 Lift capacities shown are without the power boost feature engaged.
- 注2：所示的起吊能力不超过最小倾翻载荷的75%或液压能力的87%。
NOTE 2 Lift capacities shown do not exceed 75% of minimum tipping loads or 87% of hydraulic capacities.
- 注3：最不稳定的位置在侧面。
NOTE 3 The least stable position is over the side.
- 注4：起吊能力仅适用于制造商最初制造并正常配置的机器。
NOTE 4 Lift capacities apply only to the machine as originally manufactured and normally equipped by the manufacturer.
- 注5：整机总质量为22000kg，包括600mm的三筋履带、5.7m的动臂、2.925m的斗杆、3950kg的配重、所有的工作液体和一个75kg的操作人员。
NOTE 5 The total mass of the machine is 22000kg. Included in this mass are 600mm triple grouser shoes, 5.7m boom, 2.925m arm, 3950kg counterweight, all operating fluids and a 75kg operator.
- 注6：起吊能力符合ISO 10567:2007。
NOTE 6 Lift capacities are in compliance with ISO 10567:2007.

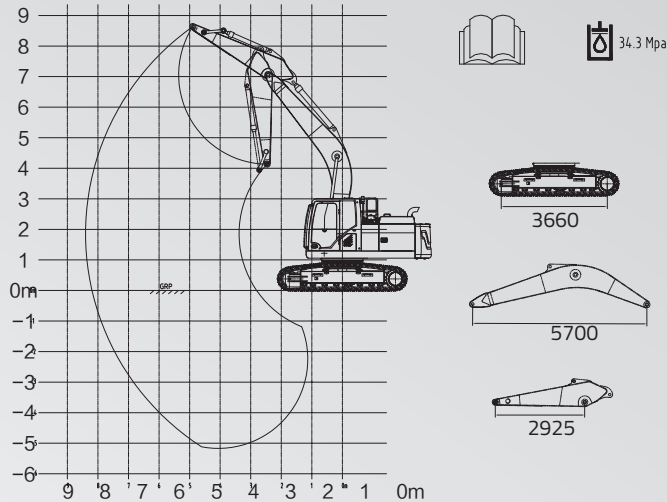
起吊能力表

LIFT CAPACITY

ZE225G Pro

在规定的起吊点半径和高度下，不要起吊大于额定值的负载。
Do not attempt to lift or hold any load that is greater than these rated values at their specified lift-point radius and height.

起吊点位于斗杆与铲斗连接的销轴孔中心。
The lift point is located at the centreline of the bucket pivot mounting pin on the arm.



LPH	额定起吊能力 (kg) Rated lift capacity (kg)												
	LPR										最大半径处的起吊能力 Lift capacity at maximum radius		
	1.5m		3.0m		4.5m		6.0m		7.5m				
m	纵向 End	侧向 Side	纵向 End	侧向 Side	纵向 End	侧向 Side	纵向 End	侧向 Side	纵向 End	侧向 Side	纵向 End	侧向 Side	mm
7.5							*4238	*4238			*3509	*3509	6200
6.0							*4672	*4672			*3280	*3280	7300
4.5					*5918	*5918	*5174	*5174	*4853	3770	*3241	*3241	7970
3.0					*7620	*7620	*5961	5100	*5191	3654	*3338	3099	8320
1.5					*9196	7230	*6772	4840	5429	3524	*3516	2987	8395
Grade			*7090	*7090	*1006	6930	*7349	4650	5323	3427	*3909	3041	8190
-1.5	*7495	*7495	*1123	*1123	*10164	6860	7303	4570	5299	3404	*4684	3301	7685
-3.0	*11723	*11723	*13515	13334	*9518	6930	*7056	4617			*5934	3922	6820
-4.5			*10796	*10796	*7706	7190					*6088	5542	5415

标有星号(*)的值受液压能力限制,见注2。
Capacities marked with an asterisk (*) are limited by hydraulic capacities. See Note 2.

- 吊索和任何辅助起吊装置的重量应从额定载荷中扣除，以确定可提升的净载荷。
The mass of slings and any auxiliary lifting devices shall be deducted from the rated load to determine the net load that may be lifted.
- 起吊能力是基于机器位于坚实的，均匀的支撑表面，使用者应考虑到松软或不平整的地面等工作条件。
Lift capacities are based on the machine standing on a firm, uniform supporting surface. The user shall make allowances for job conditions such as soft or uneven ground.
- 操作人员在操作机器前，应充分熟悉制造商提供的操作手册和安全手册。
The operator should be fully acquainted with the *Operator's Manual* and the *Operating Safety Manual* furnished by the manufacturer before operating the machine.

- 注1：所示的起吊能力是没有启用增压模式的。
NOTE 1 Lift capacities shown are without the power boost feature engaged.
- 注2：所示的起吊能力不超过最小倾翻载荷的75%或液压能力的87%。
NOTE 2 Lift capacities shown do not exceed 75% of minimum tipping loads or 87% of hydraulic capacities.
- 注3：最不稳定的位置在侧面。
NOTE 3 The least stable position is over the side.
- 注4：起吊能力仅适用于制造商最初制造并正常配置的机器。
NOTE 4 Lift capacities apply only to the machine as originally manufactured and normally equipped by the manufacturer.
- 注5：整机总质量为22500kg，包括600mm的三筋履带、5.7m的动臂、2.925m的斗杆、3950kg的配重、所有的工作液体和一个75kg的操作人员。
NOTE 5 The total mass of the machine is 22000kg. Included in this mass are 600mm triple grouser shoes, 5.7m boom, 2.925m arm, 3950kg counterweight, all operating fluids and a 75kg operator.
- 注6：起吊能力符合ISO 10567:2007。
NOTE 6 Lift capacities are in compliance with ISO 10567:2007.