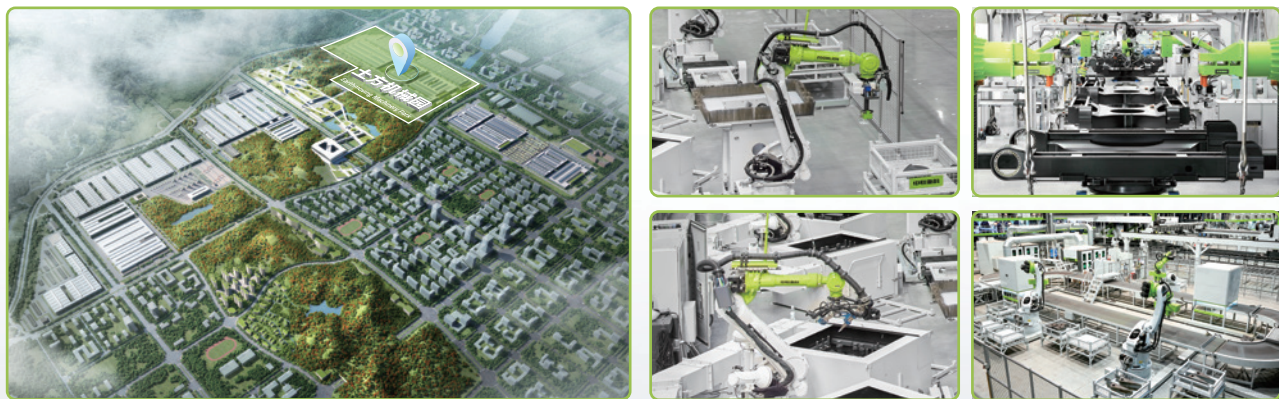


ZOOMLION TECHNOLOGY WITH INGENUITY AND CARE

科技中联，匠心相伴



The world's leading excavator intelligent manufacturing factory

全球领先的挖掘机智能制造工厂

Zoomlion Smart City Earthmoving Machinery Park is an industry-leading intelligent and flexible excavator factory. From a piece of steel plate to an excavator, with high-precision welding process, highly reliable assembly process, high-level coating process and strict quality control, each excavator is delivered with ultimate quality.

中联智慧产业城土方机械园区拥有行业领先的智能化、柔性化的挖掘机工厂，从一块钢板到一台挖掘机，以高精度的焊接工艺、高可靠的装配工艺、高级别的涂装工艺和严苛的品质管控，让每一台交付的挖掘机都具备极致品质。



Zoomlion Heavy Industry Science & Technology Co.,Ltd.

Add: No.361, South Yinpen Road, Changsha, Hunan Province, P.R.China 410013 Email: earthmoving@zoomlion.com
Copyright©2025 Zoomlion. All rights reserved. Reproduction and copying of any part of contents is not allowed for any purposes without Zoomlion's approval.
Note: Materials and specifications are subject to change without notice. Featured machines in photos may include additional equipment.



ZOOMLION 170GH HORSEPOWER CRALWER BULLDOZER

中联重科170马力段静液压履带式推土机
ZD170GH



VISION CREATES FUTURE

思想构筑未来

ZD170GH (CUMMINS)

Engine rated power (发动机功率) : 162 kW / 2000 rpm

Operating weight (操作重量) : 17800 kg

ZD170GH LGP (CUMMINS)

Engine rated power (发动机功率) : 162 kW / 2000 rpm

Operating weight (操作重量) : 19800 kg

ZD170GH (WEICHAI)

Engine rated power (发动机功率) : 140 kW / 1900 rpm

Operating weight (操作重量) : 18020 kg

ZD170GH LGP (WEICHAI)

Engine rated power (发动机功率) : 140 kW / 1900 rpm

Operating weight (操作重量) : 20020 kg

"GH"为静液压式推土机
"GH" means hydrostatic bulldozer

"LGP"为静液压型推土机湿地型
"LGP" for wetland working condition of hydrostatic bulldozer



Cab 驾驶室

Sealing has been dramatically improved so that driver ear noise is as low as 82dB;
密封性大幅提升，司机耳边噪音低至82dB；
By adopting special-shaped tubing, the structural improves its strength and safety;
采用异型管材，结构强度提升，安全性增加；
The cab cover parts are stamped and molded, which improves the overall quality and reliability;
驾驶室覆盖件采用冲压成型，整体质量可靠性提升；
G series new cab makes operation more comfortable.
G系列全新驾驶室，操作舒适性提升。

Power system 动力系统

Zoomlion's unique intelligent matching technology to obtain the highest working efficiency and the most reasonable fuel economy;
中联独有的智能匹配技术，获得最高工作效率和最合理的燃油经济性；
Combined fuel consumption can be reduced by 10% to 15%;
综合燃油消耗可降低10%~15%；
Equipped with Cummins power model, the engine is rated at 162kW, with strong power, stable and reliable performance.
搭载康明斯动力机型，发动机额定功率162kW，动力强劲。

Maintenance 维保性

It is equipped with a full-opening side shield, so there is a lot of space for maintenance, and the working valve is external, so it is easy to overhaul;
全开启式侧护罩，超大保养空间，工作阀外置，检修便捷；
It adopts centralized pressure measurement system, which is more convenient for measurement.
采用集中测压系统，测压方便。

Hydraulic System 工作液压系统

The working hydraulic system pressure of 14Mpa is increased to 21Mpa, the lifting cylinder is front-loaded, and the efficiency of shovel blade lifting and lowering is increased by 8%;
工作液压系统压力14Mpa提升至21Mpa，提升油缸前置，铲刀升降效率提升8%；
It utilizes a new type of filter that allows for a significant increase in system cleanliness.
采用新型滤芯，系统清洁度显著提升。

Transmission system 传动系统

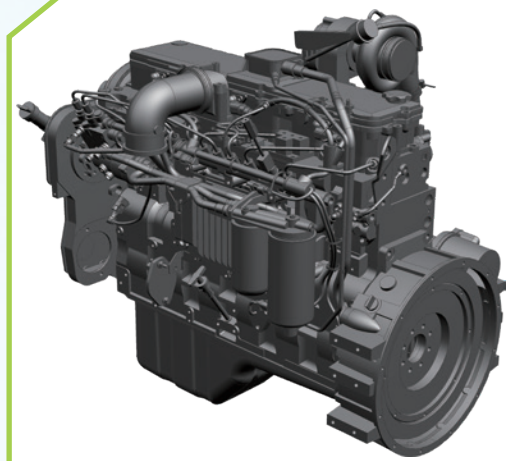
Equipped with hydrostatic transmission system, it can realize stepless speed regulation, steering with load, in-situ steering and other functions, which is more flexible and maneuverable, adapting to a variety of working conditions, and realizing the bulldozing operation in narrow space.
静压传动系统，可无级调速、带载转向、原地转向，灵活机动，适应多种工况，实现狭窄空间的推土作业。

Working Equipment 工作装置

The working device adopts pilot control, which reduces the manipulation effort by more than 60%, with precise control, good micro-movement and simpler operation mode;
工作装置采用先导控制，操控力度下降60%以上，控制精准、微动性好，操作方式更简单；
The arc plate of the bulldozing work equipment is made of NM400, with a longer service life.
推土工作装置弧板采用NM400材质，使用寿命延长。

STRONG & HIGH EFFICIENCY

强劲高效



Stronger Power Application
强劲的动力搭载

Equipped with advanced engine control technology;
搭载先进的发动机控制技术;

EFI technology from Cummins engine ensures
strong power output;
来自康明斯的电喷技术保证了强劲动力输出;

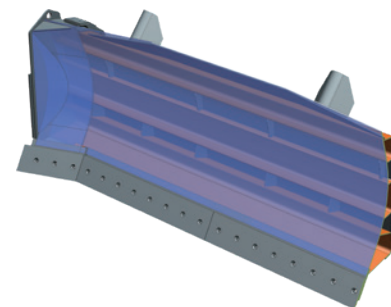
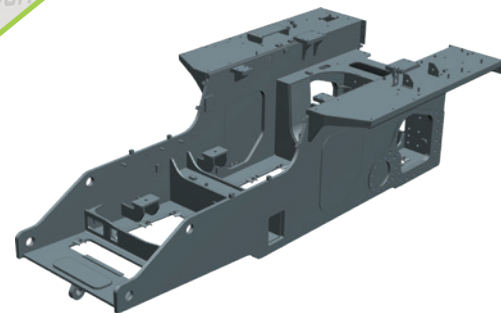
A variety of operating modes to meet different
working condition requirements;
多种作业模式选择, 满足不同的工况需求;

It can meet the differentiated needs of customers
for efficiency and fuel consumption.
满足客户对效率和油耗的差异化需求。

It carries a one-piece rigid main frame for greater
strength and longer life;
一体式刚性主机架, 强度更好, 寿命更长;

The blade rear box plates adopts U-shaped plate
split-welding structure to improve the welding
process, and the strength is increased by 13%;
铲刀后箱板采用U形板拼焊结构, 改善焊接工艺
性, 强度提升13%;

The use of special wear-resistant steel plate makes
the wear life increased by more than 25%.
使用专用耐磨钢板, 耐磨寿命提升25%以上。



WORKING DEVICES

工作装置

Straight Tilt Blade (Standard) 直倾铲 (标配)

The blade can be adjusted from top to down at a certain
angle of inclination. With good flexibility, greater cutting and
leveling ability, it is suitable for sand, stone, hard soil and
other hard materials.

在垂直面内可上下倾斜, 具有良好的灵活性、更大的切入
力和平整能力。适合于砂石、硬土等比较坚硬的物料。

Semi-U Blade (Optional) 半U型铲 (选配)

Semi-U blade has the characteristics of both straight tilting
blade and U blade, which not only has a large cutting force,
but also has a good gathering effect in the process of
bulldozing, which is suitable for a variety of working
conditions.

半U型铲同时具备直倾铲和U型铲的特点, 不但推土切
力大, 而且推土过程中有很好的聚拢效果, 适用于多种工
况的作业要求。

Sanitation Blade (Optional) 环卫铲 (选配)

The large-capacity sanitation blade offers high efficiency and
is ideal for landfills, wood chips and loose materials.

超大容量的环卫铲, 作业效率高, 适合于垃圾填埋、木屑
以及松散物料的推运以及堆积。

U Blade (Optional) U型铲 (选配)

The U blade has large capacity, with strong ability of collecting and
transporting soil, in the process of pushing and transporting, and it can
effectively prevent the material from overflowing out from both sides
of the shovel blade, and it has a very good effect of gathering, and it is
mainly suitable for transporting the soil over a long distance or the
stacking of loose materials, such as pushing coal in the coal yard.

U型铲铲刀容量大, 集土、运土能力强, 在推运过程中, 可
有效防止物料从铲刀两侧溢出, 具有很好的聚拢效果, 主要
适用于运土距离较远或松散物料的堆集工况, 如煤场推煤作
业等。

Universal Blade (Optional) 万向铲 (选配)

The blade can not only tilt up and down, but also achieve left and
right swing with the maximum swing angle of 25°. The user
adjust according to the needs of the working conditions, mainly
used in the forest logging, airports, golf courses, river bank repair
and other complex terrain engineering construction work.

铲刀不但能够实现上下倾斜, 还能实现左右回转, 最大回转
角度达到 25°, 用户可根据工况需求进行调整, 主要应用在
森林伐木、机场、高尔夫球场、河堤修整等复杂地形的工程
施工作业。

Triple-Shank Ripper (Optional) 三齿松土器 (选配)

This ripper is mainly used for loosening hard pavement or
frozen soil, and can effectively improve the stripping
efficiency of hard shi layer when working with bulldozer.

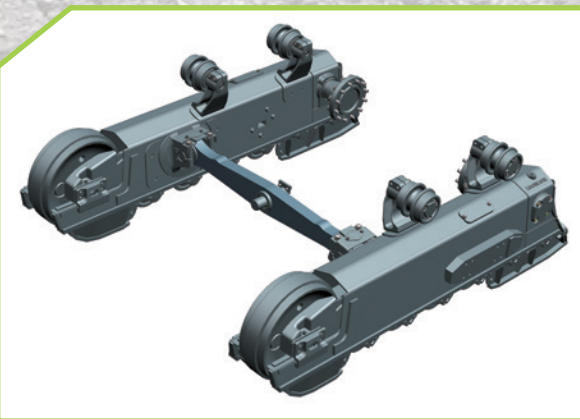
主要用于疏松坚硬的路面或冻土, 与推土铲配合作业, 可
有效提高硬土层剥离效率。

RELIABLE & DURABLE

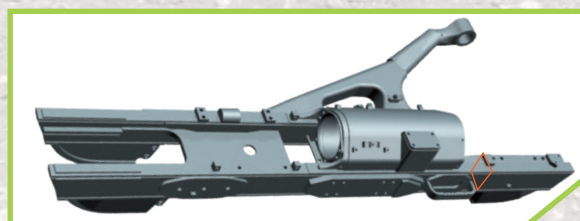
可靠耐用



Closed double circuit (double pumps + double motors) electronically controlled hydrostatic drive system is adopted; 采用闭式双回路（双泵+双马达）电控静液驱动系统； Its operating efficiency is 9% to 12% higher and it has lower fuel consumption; 作业效率同比高9%~12%，更低燃油消耗； With upgraded control technology, its movement control is more precise and transmission efficiency is higher; 升级的控制技术，控制精确，传动效率高； The first in the industry to apply automatic idling technology; 行业首家应用自动怠速技术； It can realize the functions of stepless speed change, in-situ steering, steering with load, etc., which saves working time and improves the operation efficiency; 可实现无级变速、原地转向、带载转向，节省工作时间，提升作业效率； Two handles for all working and walking functions; 双手柄实现工作和行走全部功能； The degree of modularization of the whole machine is very high, eliminating the torque converter, gearbox and rear axle box, and its maintenance cost can be saved by 60%. 整机模块化程度高，省去变矩器、变速箱和后桥箱，保养费用节省60%。



Its frame adopts one-beam + pivot structure, which effectively reduces the wear of rail chain; 台车架采用一字梁+枢轴结构，有效降低轨链磨损。The modular design of the tensioning device makes it easy to disassemble and install; 涨紧装置模块化设计，拆装便捷； The high strength of the frame can adapt to all kinds of harsh working conditions. 高强度台车架，适应各类恶劣工况。



The strength of the frame is optimized. The stress is reduced by 30% by strengthening the dangerous sections. 优化台车架强度，对危险截面进行加强设计，应力下降30%。

COMFORTABLE DRIVING

驾驶舒适



Upgraded Cab
升级款驾驶室

It has a brand-new appearance design, and the overall shape is simple, generous and novel, and is equipped with the new set of colors of Aurora Green, Gravel Gray, and Starry Gray with the characteristics of Zoomlion, which makes the whole more beautiful and the quality of the paint surface is higher.

全新的外观设计，整体造型简洁、大方、新颖，并配以具有中联特色的极光绿、沙砾灰、星耀灰全新套色，整体更美观，漆面质量更高。

The newly designed independent closed dust-proof steel hexahedron cab, whose sealing is greatly improved, can effectively prevent dust and sand from entering the cab, while the external noise is greatly reduced, and the noise next to the driver's ear is reduced to 82 dB.

全新设计的独立封闭防尘钢制六面体驾驶室，驾驶室密封性大大提升，有效防止灰尘、沙土进入驾驶室，外部噪音大幅降低，驾驶员耳旁噪音低至82dB。



New Appearance With ZOOMLION Characteristics
全新中联配色



Multifunctional Equipments
多功能配置

It adopts pilot control, so the maneuvering force is reduced by 60%, and the driving experience is enhanced, with good control performance, as well as fast response feedback, which greatly reduces the driver's labor intensity.

采用先导控制，操控力度下降60%，驾驶体验感增强，控制性能好，响应反馈速度快，大大降低了司机的劳动强度。

The interior is equipped with accessories such as fire extinguishers, escape hammers, radios, mirrors, cup holders, ashtrays, cigarette lighters, coat hooks, and sunshades, which improve the driver's operating comfort.

室内配备有灭火器、逃生锤、收音机、后视镜、水杯座、烟灰缸、点烟器、衣帽钩、遮阳帘等附件，提高了驾驶人员的操作舒适性。



Control Of Work Equipment
工作装置操纵

CUSTOMER SERVICE 客户服务

Zoomlion promises that once you choose us, we are ready to respond with the first arrival and solution any time, anywhere.

中联重科承诺，一旦您选择了我们，我们将随时做好响应准备，在任何时间、任何地点第一时间到达并提供解决方案。

Various service content, professional service teams, global service networks and systematic technical support are readily available from Zoomlion for an effective response and solution upon your request no matter where you are in the world and what time it is.

中联重科随时提供各种服务内容、专业服务团队、全球服务网络和系统化的技术支持，无论您身处何时何地，均可应您的要求提供有效的响应和解决方案。

CONVENIENT MAINTENANCE 维保便利



Engine oil checking
机油检查



Air cleaner maintenance
空滤清理



Final deceleration refueling
终减速加油



Replacing fuse
保险更换



Refueling
燃油加注



Refilling engine oil
机油加注



Traveling Filter maintenance
行走滤芯更换



Fuel tank filter maintenance
工作油箱滤芯更换



Oil tank draining
工作油箱放油

TECHNICAL PARAMETERS

技术参数

ZD170GH	
Parameters 整机参数	
Operating weight 操作重量	17800 kg
Gradeability 爬坡能力	30°
Engine 发动机	
Universal Blade 型号	QSL9.3 CSIII
Type 型式	Inline, vertical, coolant cooled, 4 stroke,turbocharged, direct-injection 直列、立式、水冷、四冲程、增压、直喷
Displacement 发动机排量	9.3 L
Rated speed 额定转速	2000 rpm
Rated power 额定功率	162 kW
Maximum drawbar pull 最大牵引力	186 KN
Maximum torque 最大扭矩	1000 N.m / 1100~1300 rpm
Undercarriage 底盘	
Suspension type悬挂方式	semi-rigid, Counterbalance Beam Floating 半刚性、平衡梁浮动式
Number of carrier rollers (each side) 托链轮数（每侧）	2
Number of track rollers (each side) 支重轮数（每侧）	6
Numnber of idler (each side) 引导轮数（每侧）	1
Track type 履带型式	Assembled, signle grouser 装配式、单履齿
Track pitch 履带节距	203.2 mm
Number of track pad (each side) 履带板数（每侧）	39
Ground pressure 接地比压	65.2 kPa
Ground clearance 离地间隙	370 mm
Minimum turning radius 最小转弯半径	2390 (to outside of track 履带板外侧) 3800 (to outside ot the bulldozer 整机外廓)

ZD170GH	
Hydraulic control mechanism 液压控制机构	
Type 型式	Gear pump 齿轮泵
Working pressure 工作压力	21 MPa
Maximum flow 最大流量	152 L/min
Control method 控制型式	Pilot 先导
Service refill capacities 服务保养加注容量	
Cooling system 冷却系统	35 L
Fuel tank 燃油箱	295 L
Engine oi 发动机油底壳	26 L
Traveling hydraulic oil tank 行走液压油箱	60 L
Working hydraulic oil tank 工作液压油箱	75 L
Final drive (each side) 终传动（每侧）	31 L
Pivot boxes (each side) 枢轴箱（每侧）	4.5 L
Transmission传动装置	
Hydrostatic transmission 静液压传动	Closed double circuit hydrostatic system 闭式双回路静液压系统
Brake 制动器	Wet Friction Pad Normally Closed Brake 湿式摩擦片常闭制动器
Final reduction 终减速	One-stage straight gear reduction + one-stage planetary reduction 一级直齿减速+一级行星减速
Number of teeth of drive wheel 驱动轮齿数	27

TECHNICAL PARAMETERS

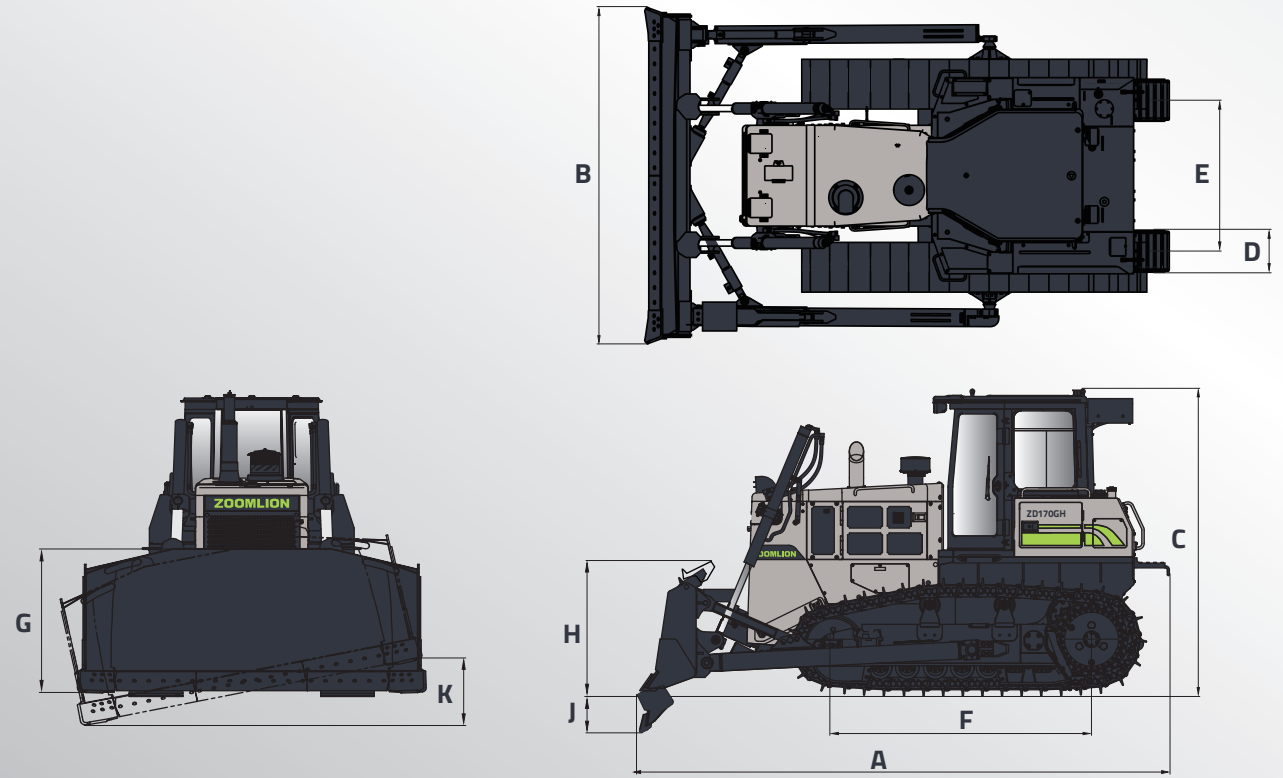
技术参数

ZD170GH LGP	
Parameters 整机参数	
Operating weight 操作重量	19800 kg
Gradeability 爬坡能力	30°
Engine 发动机	
Universal Blade 型号	QSL9.3 CSIII
Type 型式	Inline, vertical, coolant cooled, 4 stroke,turbocharged, direct-injection 直列、立式、水冷、四冲程、增压、直喷
Displacement 发动机排量	9.3 L
Rated speed 额定转速	2000 rpm
Rated power 额定功率	162 kW
Maximum drawbar pull 最大牵引力	192 KN
Maximum torque 最大扭矩	1000 N.m / 1100~1300 rpm
Undercarriage 底盘	
Suspension type悬挂方式	semi-rigi, dCounterbalance Beam Floating 半刚性、平衡梁浮动式
Number of carrier rollers (each side) 托链轮数（每侧）	2
Number of track rollers (each side) 支重轮数（每侧）	6
Numnber of idler (each side) 引导轮数（每侧）	1
Track type 履带型式	Assembled, signle grouser 装配式、单履齿
Track pitch 履带节距	203.2 mm
Number of track pad (each side) 履带板数（每侧）	39
Ground pressure 接地比压	30.4 kPa
Ground clearance 离地间隙	370 mm
Minimum turning radius 最小转弯半径	2590 (to outside of track 履带板外侧) 3920 (to outside ot the bulldozer 整机外廓)

ZD170GH LGP	
Hydraulic control mechanism 液压控制机构	
Type 型式	Gear pump 齿轮泵
Working pressure 工作压力	21 MPa
Maximum flow 最大流量	152 L/min
Control method 控制型式	Pilot 先导
Service refill capacities 服务保养加注容量	
Cooling system 冷却系统	35 L
Fuel tank 燃油箱	295 L
Engine oi 发动机油底壳	26 L
Traveling hydraulic oil tank 行走液压油箱	60 L
Working hydraulic oil tank 工作液压油箱	75 L
Final drive (each side) 终传动（每侧）	35 L
Pivot boxes (each side) 枢轴箱（每侧）	4.5 L
Transmission传动装置	
Hydrostatic transmission 静液压传动	Closed double circuit hydrostatic system 闭式双回路静液压系统
Brake 制动器	Wet Friction Pad Normally Closed Brake 湿式摩擦片常闭制动器
Final reduction 终减速	One-stage straight gear reduction + one-stage planetary reduction 一级直齿减速+一级行星减速
Number of teeth of drive wheel 驱动轮齿数	27

DIMENSION
整机尺寸

Model 机型		
	ZD170GH	ZD170GH LGP
A Overall length (without ripper) A 总长度（无松土器）	5430 mm	5544 mm
B Overall width (Blade width) B 总宽度（铲刀宽度）	3412 mm	4177 mm
C Overall height (to cab top) C 总高度（至驾驶室顶端）	3167 mm	3167 mm
D Track pad width D 履带板宽度	510 mm	950 mm
E Track gauge E 履带轨距	1880 mm	2350 mm
F Length of track on ground F 履带轴距	2675 mm	2935 mm
G Blade height G 铲刀高度	1200 mm	985 mm
H Maximum lift of blade above ground H 铲刀最大提升高度	1062 mm	1010 mm
J Maximum drop of blade below ground J 铲刀最大下降量	538 mm	492 mm
K Maximum tilt of blade K 铲刀最大倾斜量	864 mm	800 mm
Blade capacity 铲刀容量	4.7 m³	3.9 m³



STANDARD & OPTIONAL LIST
标选配清单

Classification (分类)	Configuration items (配置项)	ZD170GH	ZD170GH LGP	ZD170GH	ZD170GH LGP
Engine 动力系统	Engine brand 发动机品牌	● Weichai 潍柴	● Weichai 潍柴	● 康明斯	● 康明斯
	Engine power 发动机功率	140 kw/1900 rpm	140 kw/1900 rpm	162 kW/2000 rpm	162 kW/2000 rpm
	Number of diesel filter stages 柴油滤清器级数	3 Stage 3级	3 Stage 3级	3 Stage 3级	3 Stage 3级
	Air filter 空滤	●	●	●	●
Radiator 水箱	Air intake prefilter 进气预滤	●	●	●	●
	Common water tank 普通水箱	●	●	●	●
Hydraulic system 液压系统	Working pump 工作泵	●	●	●	●
	Multiple unit valve 多路阀	●	●	●	●
	Travel motor (Hydrostatic) 行走马达（静液压）	●	●	●	●
Electrical system 电气系统	Back-up alarm 倒车报警	●	●	●	●
	Warning light 警示灯	●	●	●	●
	Fuel sensor 燃油传感器	●	●	●	●
	Rearview camera 后置摄像头	●	●	●	●
	Front camera 前置摄像头	○	○	○	○
Front working equipment 前工作装置	GPS	●	●	●	●
	Straight-tilt blade 直倾铲	○	●	○	●
	Semi-U blade 半U铲	●	×	●	×
	Sanitation blade 环卫铲	×	○	×	○
Rear working equipment 后工作装置	Triple-shank ripper 三齿松土器	○	○	○	○
	Bogie（6 track rollers）台车架（6支重轮）	●	×	●	×
Travel system 行走系统	Bogie（7 track rollers）台车架（7支重轮）	×	●	×	●
	510mm track 510mm履带	●	×	●	×
	560mm track 560mm履带	○	×	○	×
	610mm track 610mm履带	○	×	○	×
	950mm track 950mm履带	×	●	×	●
	1100mm track 1100mm履带	×	○	×	○
	Short mudguard assy 短挡泥板总成	●	●	●	●
Cab 驾驶室	Seat 座椅	●	●	●	●
	Radio 收音机	●	●	●	●
	Fire extinguisher 灭火器	●	●	●	●
FOPS&ROPS	Two-column ROPS 二柱防翻架	○	○	○	○
Air conditioner 空调系统	Air conditioner (cool & warm) 冷暖空调	○	○	○	○
	Air conditioner (cool) 单冷空调	○	○	○	○

STANDARD 标配 ●
OPTIONAL 选配 ○
NO OPTIONS 不可选 ×