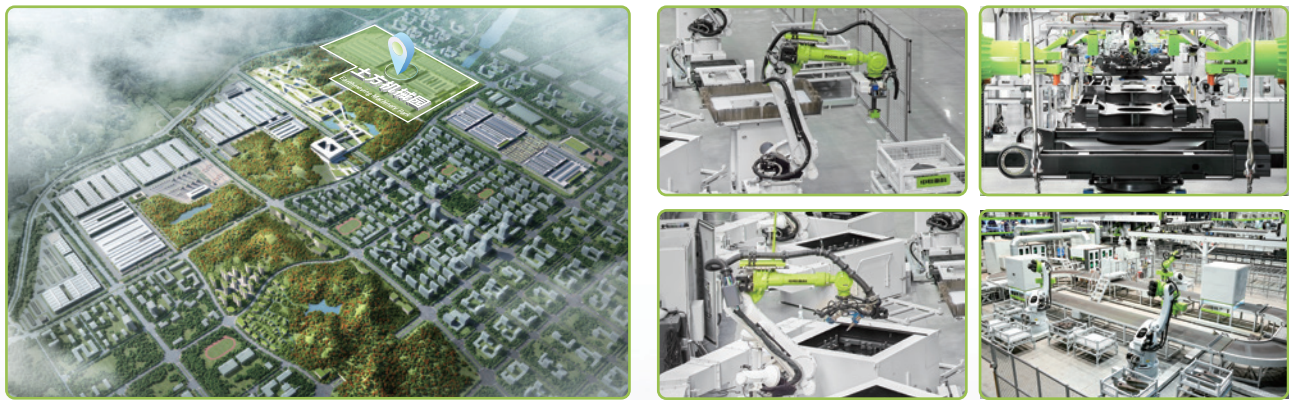


# ZOOMLION TECHNOLOGY WITH INGENUITY AND CARE



**THE WORLD'S LEADING EXCAVATOR INTELLIGENT MANUFACTURING FACTORY**  
ZOOMLION Smart City Earthmoving Machinery Park is an industry-leading intelligent and flexible excavator factory. From a piece of steel plate to an excavator, with high-precision welding process, highly reliable assembly process, high-level coating process and strict quality control, each excavator is delivered with ultimate quality.

**ZOOMLION**

**Zoomlion Heavy Industry Science & Technology Co.,Ltd.**

Add: No.361, South Yinpen Road, Changsha, Hunan Province, P.R.China 410013      Email: earthmoving@zoomlion.com  
Copyright©2024 Zoomlion. All rights reserved. Reproduction and copying of any part of contents is not allowed for any purposes without Zoomlion's approval.  
Note: Materials and specifications are subject to change without notice. Featured machines in photos may include additional equipment.



# ZOOMLION SKID-STEER LOADER ZS030R



**ZOOMLION**



**VISION  
CREATES  
FUTURE**





# PRODUCT ADVANTAGES

# EXCELLENT PERFORMANCE AND POWERFUL ENGINE

Powerful engine equipped with dual throttle control realizes perfect match-up of performance and economy

- Flexible & Light
- Excellent performance
- Safe & Comfortable
- Convenient maintenance
- Distinguished & Durable
- Multiple functions

Rated operating capacity(50% tipping load): 345 kg (760.60 lb)  
Bucket breakout force: 8.7 kN (1955.84 lbf)  
Operating weight: 1293 kg (2850.58 lb)  
Engine power: 18.2kw(24.41 hp)  
Tipping load: 690 kg (1521.19 lb)

**Manual fixed throttle**  
Continuous operation keeping engine constant speed

**Pedaling dynamic throttle**  
Occasional actions increasing engine speed instantaneously

- A** Pedaling dynamic throttle
- B** Manual fixed throttle

- Kubota 18.2kW (24.41 hp)engine, providing strong power for complicated working tasks ;
- Manual fixed throttle and pedaling dynamic throttle control balance the demands for power and fuel economy;
- It meets U.S. EPA Tier 4 Final and EU Stage V emission standards.





# INDEPENDENT COOLING SYSTEM, ECONOMIC & ENERGY SAVING

It adopts independent cooling technology, adjusting cooling capability automatically according to the temperature, which is more energy saving



# FLEXIBLE, LIGHT & STRONG PASSABILITY

Primary choice for construction in narrow spaces

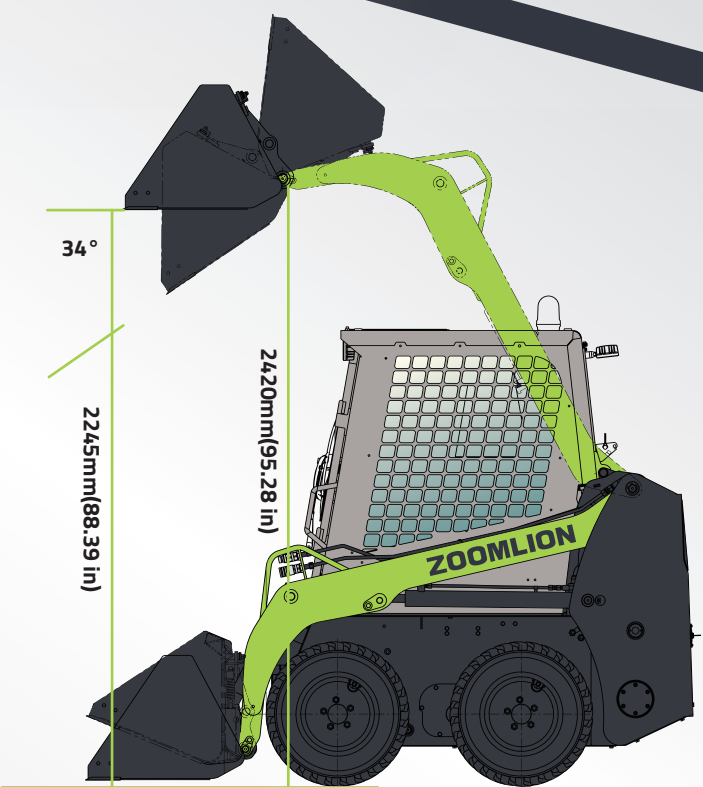
- Overall length without attachments is **1.89m**(74.41 in); overall height is **1.81m**(71.26 in); overall width is **0.91m**(35.83 in); it is convenient for transportation and easy to go in the elevator.
- The ground clearance is **140mm**(5.51 in), and the angle of departure is **25°**, meeting the demands of busy construction sites.
- **10.3km/h**(6.4 mph) highest traveling speed, which can meet the demands of quick transportation.
- With pivot steering and small turning radius, it is capable of working in narrow spaces, replacing man labor and improving the construction efficiency.



# OUTSTANDING LOADING AND DUMPING CAPABILITY

Load more, lift higher and move quicker

- The rated operating capacity at 50% tipping load is **345kg**(760.60 lb), and the shovel loading efficiency is high.
- Height of bucket hinge pin: **2420mm**(95.28 in);
- Maximum height of bucket bottom level: **2245mm**(88.39 in), dump angle at maximum height: **34°**; easy to load and dump;
- Large flow hydraulic system: **38L/min**(10.04 gal/min); efficiency of work equipment improved by **18%**; loading and unloading efficiency improved by **24%**.





# SAFETY & RELIABILITY

Unique design, ensuring your safety

- Working arm sunken design brings better side view and safer construction;
- Operating weight 1293 kg(2850.58 lb), reducing the load of floor when working upstairs.



- Bucket cylinders and pipelines are equipped with protective cover to prevent them from being damaged.



- FOPS / ROPS certified canopy and cab, ensuring the safety of drivers.



# DISTINGUISHED DURABILITY

Comfortable driving experience



- Integral muffler structure, lowering vibration and noise  
Air inlet of muffler is connected with the engine exhaust out let directly.



- Optional suspension seat, bringing more comfortable driving experience



- Optional heating system



- 740mm(29.13 in) wheelbase creating higher lateral and steering stability



- Hydraulic pilot controlling technology making it easy for drivers to control with only 1/3 control force of mechanical control





# CONVENIENT MAINTENANCE

Open the cab, upper cover and rear door to complete all maintenance, convenient and quick



- Large upper cover opening angle for easy maintenance
- Upturning cab for easy inspection

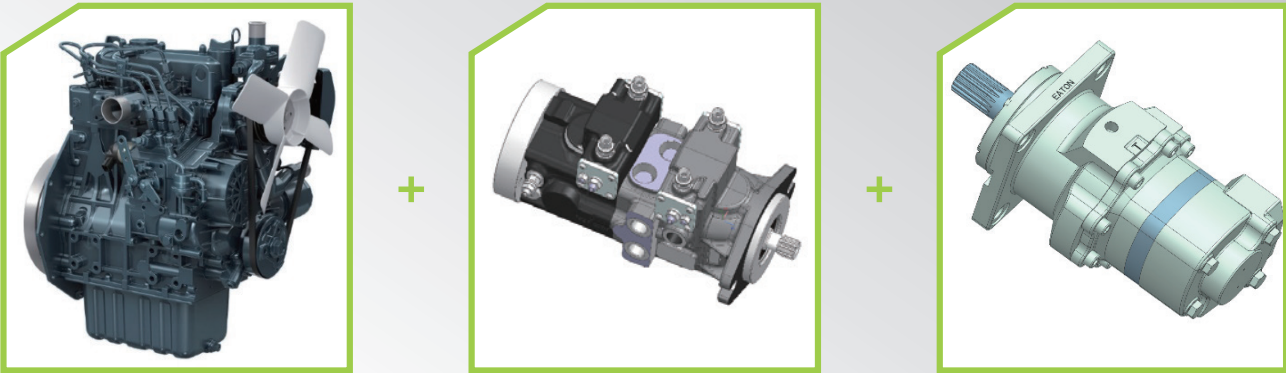
- Maintenance parts are reasonably arranged for easy maintenance;
- The abundant maintenance ports at the bottom of the machine facilitates cleaning and inspection;
- Equipped with a multifunction integrated instrument, fuel level, hour meter, voltage failure and other key equipment information can be displayed on the LCD screen.

- A** Coolant filler
- B** Air filter
- C** Fuel filter
- D** Oil filter
- E** Fuel coarse filter



# DISTINGUISHED & DURABLE

Well-known brand core components, making the machine more endurable



- Core components are from well-known manufacturer, with better stability and endurance;
- Key parts of bucket adopts NM400 wear-resistant steel plate with long life;
- Bucket teeth and blade are optional for longer bucket life and easier bucket loading.





# MULTIPLE FUNCTIONS

Breaking, loading and material handling can be done by one machine

- It can be equipped with hammer to complete breaking;
- It can be equipped with pallet fork to carry material easily;
- Suitable for municipal construction, urban and rural gardens, road maintenance, ports and so on.



# STANDARD & OPTIONAL FEATURES

## Standard

- Adjustable seat
- Attachments hydraulic system
- Quick coupler
- Reverse alarm
- ISO control mode
- Horn
- 0.18m³ Bucket
- Integrated instrument
- Lift arm safety support device
- Front & rear working light
- Safety interlocking device
- Two points safety belt
- Safety lever
- Built-in rearview mirror
- Vacuum tire
- Canopy (ROPS/FOPS certified)

## Optional

- Mechanical suspension seat
- Heater
- Solid tire
- Revolving warning light
- GPS
- Blade
- Bucket teeth
- Dust cap for quick couplings
- Fire extinguisher
- Cab (ROPS/FOPS certified)
- Emergency stop

# TECHNICAL SPECIFICATIONS

Category	Item	ZS030R	
Dimensions	Overall length (with bucket)	2460 mm	96.85 in
	Overall width (with bucket)	910 mm	35.83 in
	Overall height (to cab top)	1810 mm	71.26 in
	Height of bucket hinge pin	2420 mm	95.28 in
	Tail length	695 mm	27.36 in
	Ground clearance	140 mm	5.51 in
	Angle of departure	25°	
	Front turning radius (without bucket)	945 mm	37.20 in
	Front turning radius (with bucket)	1460 mm	57.48 in
	Rear turning radius	1115 mm	43.90 in
	Wheel base	740 mm	29.13 in
	Wheel track	762 mm	30 in
	Maximum operating height	3070 mm	120.87 in
Working range	Maximum dumping height	1950 mm	76.77 in
	Dumping angle at maximum height	34°	
	Bucket rollback at maximum height	97°	
	Bucket rollback at ground level	23°	
	Dumping reach	403 mm	15.87 in
	Model	Kubota D1105	
Engine	Rated power	18.2 kW (24.41 hp) / 3000 rpm	
	Displacement	1.123 L	68.53 in³
Performance	Emission standards	EPA T4F / EU Stage V	
	Rated operating capacity	345 kg	760.60 in
	Tipping load	690 kg	1521.19 in
	Maximum travel speed	10.3 km/h	6.4 mph
	Maximum drawbar pull	10.1 kN	2270.57 lbf
	Lift arm breakout force	7.6 kN	1708.55 lbf
	Bucket breakout force	8.7 kN	1955.84 lbf
	Gradeability	25°	
	Maximum flow	38 L/min	10.04 gal/min
Hydraulic system	Pressure - Working equipment circuit	19 MPa	2755.72 psi
	Pressure - Travel circuit	25 MPa	3625.94 psi
	Pressure - Pilot circuit	2.4 MPa	348.09 psi
Service refill capacities	Fuel tank	25 L	6.60 gal
	Coolant	5.5 L	1.45 gal
	Engine oil	5.1 L	1.35 gal
	Hydraulic tank	15 L	3.96 gal
	Hydraulic system	36 L	9.51 gal

## Dimensions and working range

Unit: mm (in)

