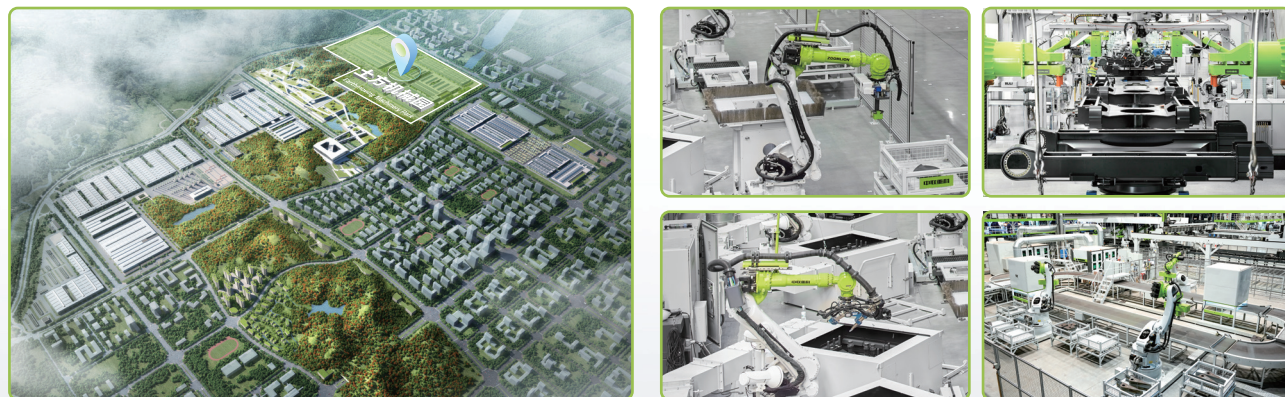


科技中联，匠心相伴 ZOOMLION TECHNOLOGY WITH INGENUITY AND CARE



全球领先的挖掘机智能制造工厂

The world's leading excavator intelligent manufacturing factory

中联智慧产业城土方机械园区拥有行业领先的智能化、柔性化的挖掘机工厂，从一块钢板到一台挖掘机，以高精度的焊接工艺、高可靠的装配工艺、高级别的涂装工艺和严苛的品质管控，让每一台交付的挖掘机都具备极致品质。

Zoomlion Smart City Earthmoving Machinery Park is an industry-leading intelligent and flexible excavator factory. From a piece of steel plate to an excavator, with high-precision welding process, highly reliable assembly process, high-level coating process and strict quality control, each excavator is delivered with ultimate quality.

ZOOMLION

Zoomlion Heavy Industry Science & Technology Co.,Ltd.

Add: No.361, South Yipen Road, Changsha, Hunan Province, P.R.China 410013 Email: earthmoving@zoomlion.com
Copyright©2024 Zoomlion. All rights reserved. Reproduction and copying of any part of contents is not allowed for any purposes without Zoomlion's approval.
Note: Materials and specifications are subject to change without notice. Featured machines in photos may include additional equipment.



SOUTHEAST ASIA

ZOOMLION 38-TONNAGE CRAWLER HYDRAULIC EXCAVATOR

中联重科38吨级履带式液压挖掘机
ZE335G/ZE385G



VISION CREATES FUTURE

思想构筑未来

ZE335G

Engine rated power (发动机功率) : 214kW/2100rpm

Operating weight (操作重量) : 33500kg

Bucket capacity (斗容) : 1.6~1.9 m³

ZE385G

Engine rated power (发动机功率) : 214kW/2100rpm

Operating weight (操作重量) : 38000kg

Bucket capacity (铲斗容量) : 1.6~2.2 m³



CONFIGURATION & EFFICIENCY

配置及效率

ZE335G/ZE385G is equipped with CUMMINS engine, stronger power, sufficient torque reserve and stable output, large low-speed torque, faster action response and longer service life. The electronically controlled positive flow system optimizes engine performance, and the three-stage overall idle control is more energy-saving and efficient. Fuel efficiency is improved by more than 7.6%.

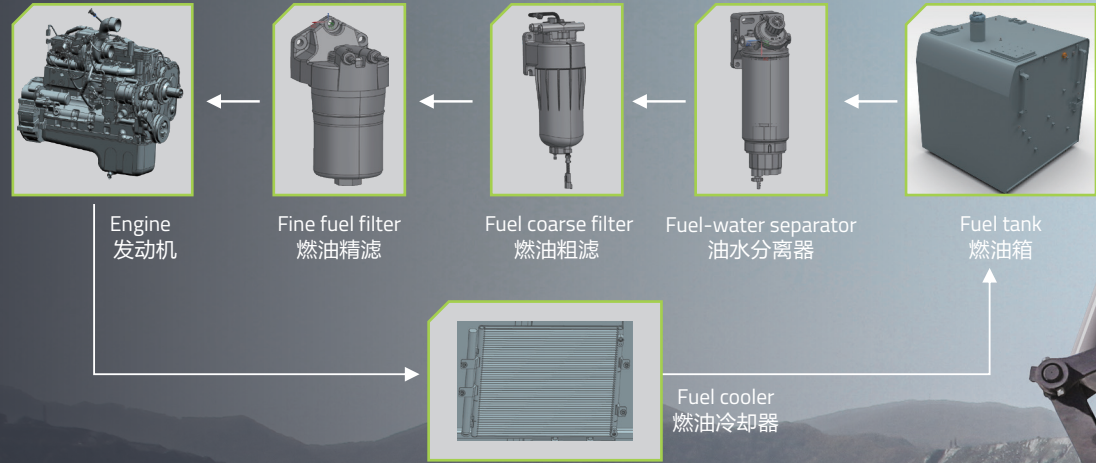
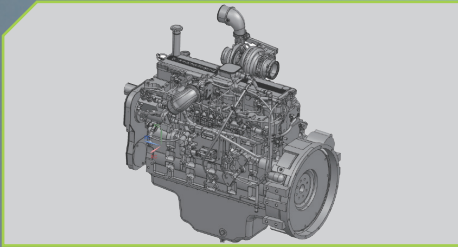
For the Southeast Asia, The ZE335G/ZE385G engine uses a custom engine, making the engine more reliable and durable.

ZE335G/ZE385G 搭载康明斯发动机，动力强大，扭矩储备足且输出平稳、低速扭矩大、动作响应更快、使用寿命更长。

电控正流量系统优化发动机性能，三级怠速控制，更节能高效。

燃油效率提高7.6%以上。

针对东南亚地区工况，ZE335G/ZE385G 发动机使用定制化发动机，使得发动机更可靠更耐用。



• Using a three-stage large-capacity filtration system, the filtration accuracy of the filter element is further improved, impurity filtration reaches 99.9%, and a fuel cooler is used to accurately control the fuel temperature, so that the engine is always in the best condition, extending the engine life and reducing fuel consumption.

• 采用三级大容量过滤系统，滤芯过滤精度进一步提升，杂质过滤达到 99.9%，并且使用燃油冷却器，精准控制燃油温度，使发动机始终处于最佳状态，提升了发动机寿命的同时，降低了燃油消耗。



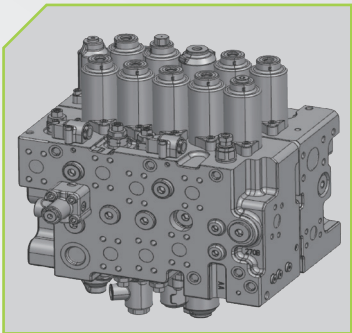
- The air filter with high efficiency and large dust capacity, can effectively protect the engine and ensure long-term operation even in harsh working environments.
- For high dust environments, ZE335G/ZE385G can be equipped with an optional oil bath air pre-filter.
- In view of the high temperature in Southeast Asia, ZE335G/ZE385G increased air inlet area of the rear door.

- 高效率和大容量空气过滤器，即使在恶劣的工作环境中，也能有效地保护发动机，保证长久地工作。
- 针对高粉尘环境，ZE335G/ZE385G 可选配油浴式空气预滤器。
- 针对东南亚高温天气，ZE335G/ZE385G 后门进风面积加大。



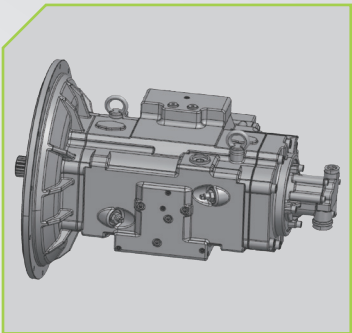
ADAPTABILITY IMPROVEMENT

完美适配性



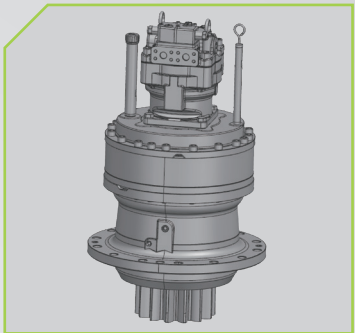
↑ 口径提高 14%

- The diameter of the main valve is increased and the valve core structure is optimized to reduce the friction between the hydraulic oil and the pipeline channel, effectively reducing oil channel pressure loss, and improving energy efficiency.
- 主阀口径增大，阀芯结构优化，减小液压油与管路通道的摩擦力，有效降低油道压力损失，能效提升；



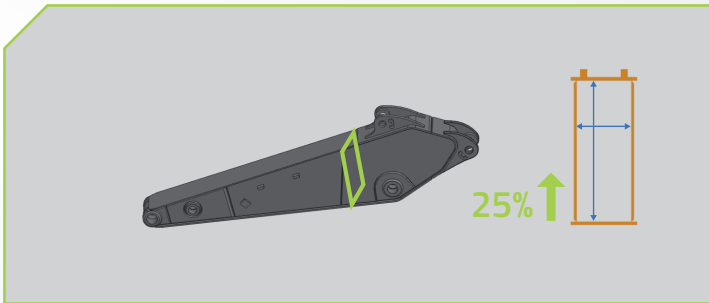
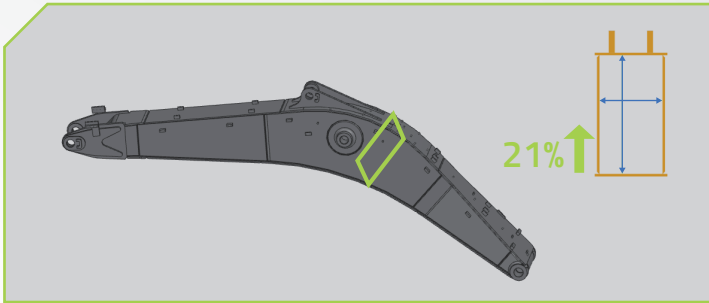
↑ 排量增大 13%

- The product performance is mature, stable and reliable;
- The flow and pressure of the dual pumps are greatly improved, and the breaking speed is faster;
- The structure is compact, the efficiency is higher and the noise is lower.
- 产品性能成熟、稳定、可靠；
- 双泵流量、压力大大提高，破碎速度更快；
- 结构紧凑，效率更高，噪声更低；



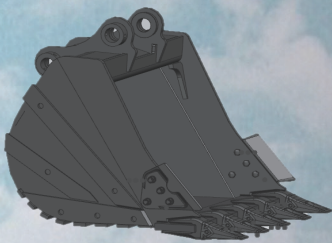
- Large displacement swing motor, large output torque;
- Mature brand in the industry, high reliability
- 大排量回转马达，输出扭矩大；
- 行业成熟品牌，可靠性高；

- Large-section + forging support, the boom section has increased by 21%, the arm section has increased by 26%.
- The end of arm is the widest 414mm, and the pin shaft is increased to 100mm, making excavation and breaking more reliable.
- 大截面+锻件支撑座，动臂截面增加21%，斗杆截面增加25%；
- 斗杆“马头”最宽414mm，销轴增加到100mm，挖掘、破碎更可靠；



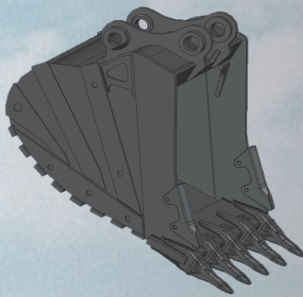
ADAPTABILITY IMPROVEMENT

完美适配性



Standard high efficient general bucket;
Loading efficiency is high because soil is hardly stuck on it;
Durable with enhanced design;

土方斗，斗容大，作业效率高；
不易粘斗，装载效率更高；
专业强化设计，更耐用；

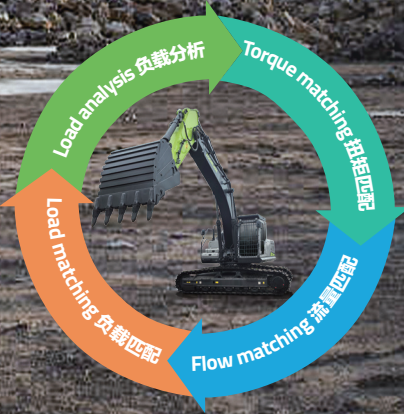


The optional rock bucket is powerful during digging by greatly reducing the cutting resistance of bucket teeth;
The bucket is more durable by reducing the wear and impact of the rock on the bottom of the bucket.

岩石斗，大幅降低斗齿切入阻力，挖掘更有力；
降低了岩石对斗底的磨损和冲击，铲斗更耐用。

Model 机型	Boom 动臂长度	Stick 斗杆长度	Bucket capacity 铲斗规格	Applicable material density 适用物料密度
ZE385G	6400mm	2900mm	2.0m³Rock bucket 岩石斗	1800kg/m³
			2.2m³Earthwork bucket 土方斗	1600kg/m³
	6400mm	3200mm	1.6m³Rock bucket 岩石斗	1800kg/m³
ZE335G	6150mm	2900mm	1.6m³Rock bucket 岩石斗	1800kg/m³
			1.9m³Earthwork bucket 土方斗	1600kg/m³
	6150mm	3200mm	1.6m³Rock bucket 岩石斗	1800kg/m³

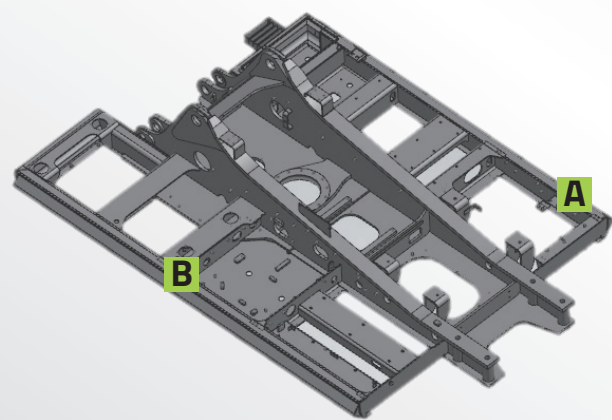
E-COT控制系统



E-CoT™(Excavator Condition Auto-Optimization Technology):
The controller collects operating handle action pressure and load analysis, and cooperates with self-learning control technology to optimally match torque and flow, reduce energy loss, improve machine controllability and fuel efficiency.
E-CoT™(Excavator Condition Auto-Optimization Technology) 通过控制器采集操作手柄动作压力和负载分析，配合自学习控制技术，对扭矩和流量进行最优匹配，减少能量损失，提高整机操控性和燃油效率性。

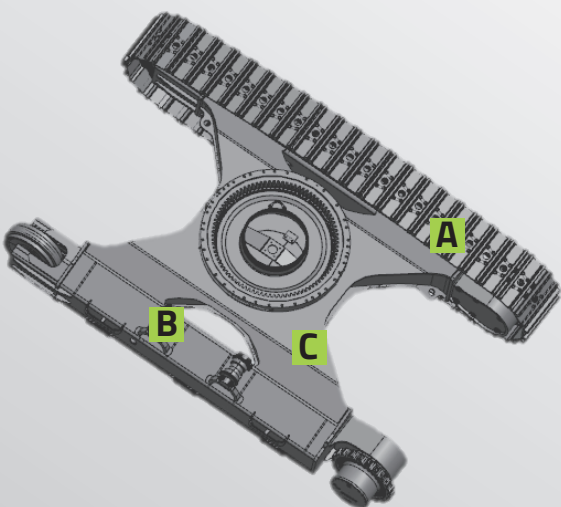
RELIABILITY & DURABILITY

可靠与耐用



A The D-shaped side beam of the turntable has increased plate thickness in key parts, and combined with the anti-collision beam, the overall strength is higher.
转台D型边梁，关键部位板厚增加，配合防撞梁，整体强度更高；

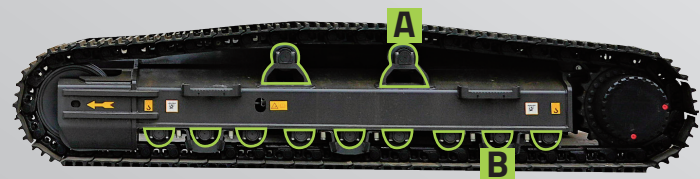
B Anti-collision beam
防撞梁



A Standard 3-rib reinforced track
标配3筋加强型履带

B The large slope design of the crawler side beams effectively reduces soil accumulation and ensures smooth traveling.
履带边梁大边坡设计，有效减少泥土堆积，确保行走顺畅

C The plate thickness of key parts of the undercarriage is increased, the cross-section is enlarged, and the overall strength is increased by more than 10%, making it more suitable for harsh working conditions.
底盘关键部位板厚增加，截面加大，整体强度提升10%以上，更适应严苛工况。



B ZE385G: Single side standard with three rail clamps for better track protection; long wheelbase and 9 track rollers on one side for stronger load-bearing capacity and longer life.
ZE335G: Single side standard with two rail clamps, 8 track rollers on one side, long wheelbase, stronger load-bearing capacity and longer life.

A The track roller is used as a carrier roller and is supported on both sides, with higher bending and torsion resistance. 支重轮用作拖链轮，且双边支撑，抗弯抗扭能力更高。

ZE385G: 单侧标配3个夹轨器，履带防护更好；轴距长、单侧9个支重轮，承载能力更强，寿命更长。
ZE335G: 单侧标配2个夹轨器，单侧8个支重轮、轴距长、承载能力更强，寿命更长。

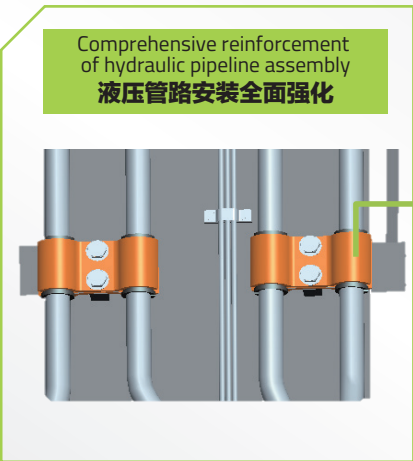
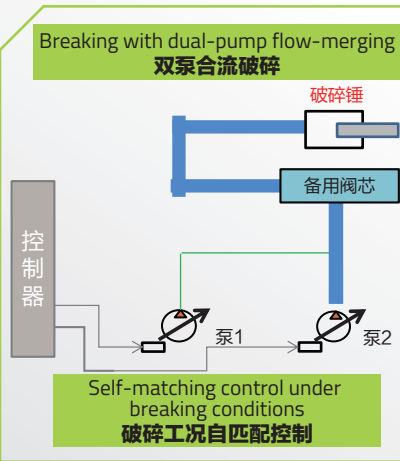


Breaker type 破碎锤类型	Model 机型	Recommended breaker hammer diameter 推荐破碎锤铅锤直径
Top/Side 直型/三角	ZE385G	165 mm
	ZE335G	155 mm

- The hammer plumbing is equipped with breaking mode working condition self-matching control technology, which increases the breaking efficiency by more than 4%.
- The hydraulic plumbing installation is fully strengthened, and the pipe clamp is widened and thickened, making it more durable.
- 选配破碎管路，搭载破碎模式工况自匹配控制技术，破碎效率相比上一代机型提升4%以上；
- 液压管路安装全面强化，管夹加宽，加厚，更耐用；

Hammer plumbing mounting seat is reserved before delivery, which is more convenient and reliable compared to that welded upon delivery.

出厂预留破碎管路安装座，相比出厂后加焊的管路安装座，更方便、更可靠。



COMFORT & INTELLIGENCE

舒适与智能



- Large touch screen
- The standard rearview camera
- 大尺寸触摸屏
- 标配后视摄像头



- Push start
- 一键启动

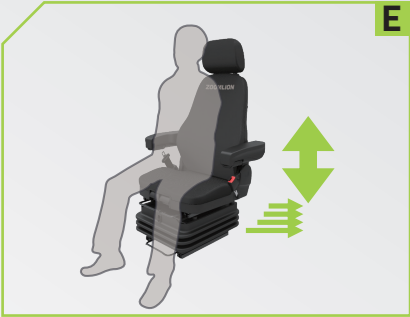


- Cup holder
- 杯托

- USB
- Bluetooth(蓝牙)
- Data Transmission (数据传输)



- Highly integrated control panel
- 高集成化 控制面板



- Special suspension seat of large stroke full wrapping experience
- 大行程专用悬浮座椅全包裹体验



- Compared with the previous generation cab, the cooling effect of the new generation cab is increased by more than 19%
- 新一代驾驶室相比上一代驾驶室，制冷降温效果提高19%以上



- Superb all-round visibility thanks to large window areas, with increased glass transmittance above 11%
- Customers can choose the sunshade
- 大面积环绕式玻璃，玻璃通透率提升11%以上
- 客户可选配遮阳帘

CONVENIENT MAINTENANCE

维保便捷



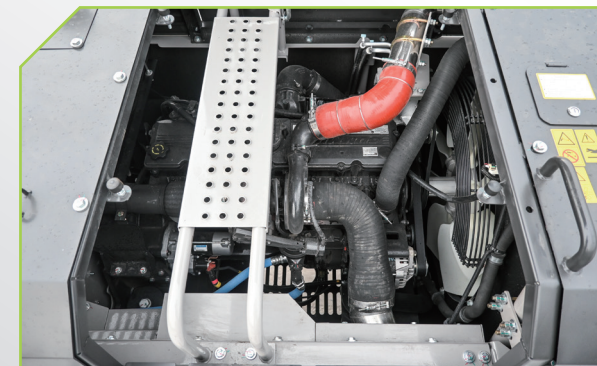
Engine air filter monitoring and maintenance are quick and easy, and the operation space is large.
发动机空滤监测与保养均快捷,操作空间大。



The inspection and maintenance of the oil filter, diesel filter and pilot filter are easily accessible at ground level, realizing one-stop maintenance.
机油滤、柴油滤、先导滤的检视与保养均伸手可及,实现一站式保养。



Add the centralized lubrication function of the swing bearing to make maintenance more convenient.
增加回转支承集中润滑功能,保养更方便。



Engine room space is larger, and inspection, repair, maintenance are more convenient.
发动机舱空间更大,检视、维修、保养更方便。

CUSTOMER SERVICE

客户服务

Zoomlion 's service engineers are located in various key countries around the world. According to the distribution of customers' equipment engineers will be stationed in that country for a long time.If customers need it, our mission will be fulfilled. Every year, Zoomlion 's service engineers carry out a service trip to visit new and old customers.

We collect reasonable opinions, and listen carefully to customer service requests.

We meet the needs of customers in a timely manner and respond to the reasonable needs of customers.

We train the operators of each piece of equipment to ensure the stable operation of the equipment.

中联重科的服务工程师分布在全球各个重点国家，根据客户设备分布情况，工程师长期驻点该国家，客户有需要，我们使命必达。每年中联重科服务工程师都会开展服务万里行活动，针对新老客户拜访。

针对合理性意见进行收集，用心听取客户服务诉求。

我们及时满足客户的需求，响应客户合理需求。

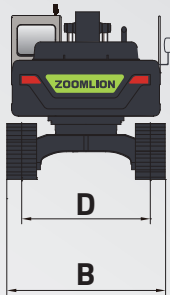
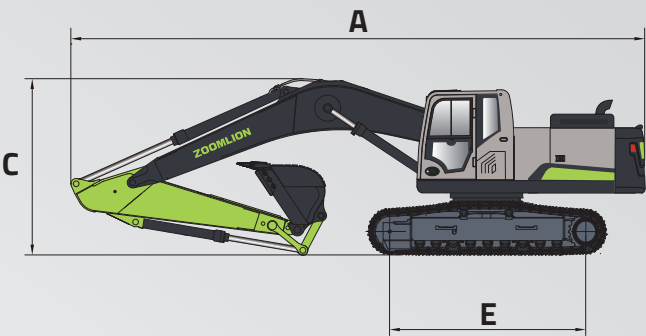
我们对每台设备的机手都要进行培训，全力保障客户设备稳定运转。



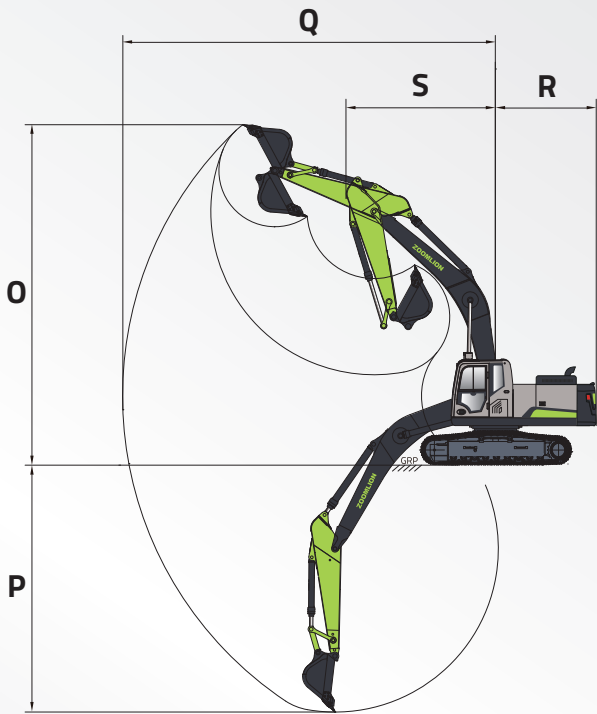
ZE335G	
Engine（发动机）	
Manufacturer品牌	CUMMINS 康明斯
Model型号	QSL
Rated power额定功率	214 kW/2100 rpm
Displacement排量	8.9 L
Hydraulic system（液压系统）	
Main pump主泵	Two variable displacement piston pumps 2个变量柱塞泵 Maximum flow最大流量: 2×315 L/min
Pilot pump先导泵	One gear pump 1个齿轮泵 Maximum flow最大流量: 26.25 L/min
Maximum pressure - Equipment 工作油路	34.3 MPa
Maximum pressure - Swing 回转油路	31 MPa
Maximum pressure - Travel 行走油路	34.3 MPa
Maximum pressure – Pilot system 先导油路	3.9 MPa
Maximum pressure - Boost 增压模式	37.3 MPa
Swing mechanism（回转机械装置）	
Maximum swing speed 最大回转速度	10.5 r/min
Undercarriage（底盘结构）	
Number of carrier rollers (each side) 托链轮数量（每侧）	2 (Two sides supported track rollers) 2（双侧支撑支重轮式）
Number of track rollers (each side) 支重轮数量（每侧）	8
Travel speed (high) 行走速度（高）	5.6 km/h
Travel speed (low) 行走速度（低）	3.6 km/h
Maximum drawbar pull 最大牵引力	266 kN
Gradeability 爬坡能力	70 %
Service refill capacities（维护保养加注容量）	
Fuel tank 燃油箱容积	650 L
Engine coolant 发动机冷却液	42 L
Engine oil 发动机油	36 L
Swing device 回转装置	10.5 L
Traveling device (each side) 行走装置（每侧）	10 L
Hydraulic system 液压系统	300 L
Hydraulic tank 液压油箱	180 L
Work device（工作装置）	
Boom length 动臂长度	6150 mm
Arm length 斗杆长度	2900 mm

ZE385G	
Engine（发动机）	
Manufacturer品牌	CUMMINS 康明斯
Model型号	QSL
Rated power额定功率	214 kW/2100 rpm
Displacement排量	8.9 L
Hydraulic system（液压系统）	
Main pump主泵	Two variable displacement piston pumps 2个变量柱塞泵 Maximum flow最大流量: 2×324 L/min
Pilot pump先导泵	One gear pump 1个齿轮泵 Maximum flow最大流量: 27 L/min
Maximum pressure - Equipment 工作油路	34.3 MPa
Maximum pressure - Swing 回转油路	31 MPa
Maximum pressure - Travel 行走油路	34.3 MPa
Maximum pressure – Pilot system 先导油路	3.9 MPa
Maximum pressure - Boost 增压模式	37.3 MPa
Swing mechanism（回转机械装置）	
Maximum swing speed 最大回转速度	10.6 r/min
Undercarriage（底盘结构）	
Number of carrier rollers (each side) 托链轮数量（每侧）	2 (Two sides supported track rollers) 2（双侧支撑支重轮式）
Number of track rollers (each side) 支重轮数量（每侧）	9
Travel speed (high) 行走速度（高）	5.2 km/h
Travel speed (low) 行走速度（低）	3.1 km/h
Maximum drawbar pull 最大牵引力	320 kN
Gradeability 爬坡能力	70 %
Service refill capacities（维护保养加注容量）	
Fuel tank 燃油箱容积	650 L
Engine coolant 发动机冷却液	42 L
Engine oil 发动机油	36 L
Swing device 回转装置	10.5 L
Traveling device (each side) 行走装置（每侧）	10 L
Hydraulic system 液压系统	300 L
Hydraulic tank 液压油箱	180 L
Work device（工作装置）	
Boom length 动臂长度	6400 mm
Arm length 斗杆长度	2900 mm

ZE335G	
Overall dimension（整机尺寸）	
A Overall length A 总长度	10960 mm
B Overall width B 总宽度	3190 mm
C Overall height C 总高度	3790 mm
D Track gauge D 履带轨距	2590 mm
E Crawler base E 履带轴距	3930 mm
Working range（作业范围）	
O Maximum digging height O 最大挖掘高度	9740 mm
P Maximum digging depth P 最大挖掘深度	6940 mm
Q Maximum digging reach Q 最大挖掘距离	10625 mm
R Rear swing radius R 尾部回转半径	3500 mm
S Front minimum swing radius S 前部最小回转半径	4390 mm



ZE385G	
Overall dimension（整机尺寸）	
A Overall length A 总长度	11230 mm
B Overall width B 总宽度	3190 mm
C Overall height C 总高度	3780 mm
D Track gauge D 履带轨距	2590 mm
E Crawler base E 履带轴距	4140 mm
Working range（作业范围）	
O Maximum digging height O 最大挖掘高度	10010 mm
P Maximum digging depth P 最大挖掘深度	7075 mm
Q Maximum digging reach Q 最大挖掘距离	10870 mm
R Rear swing radius R 尾部回转半径	3500 mm
S Front minimum swing radius S 前部最小回转半径	4525 mm



STANDARD & OPTIONAL EQUIPMENT

标选配

Classification（分类）	Configuration items（配置项）	ZE335G
Engine 发动机	Air filter 空气滤清器	●
	Swirl type air pre-filter 旋流式空气预滤器	●
	Oil bath air pre-filter 油浴式空气预滤器	○
Hydraulic System 液压系统	Hammer plumbing flow adjustment 破碎管路流量调节	○
	Breaker pipeline 破碎锤管路	○
Cab 驾驶室	Cab 司机室	●
	ROPS	○
	Skeleton guard 栅格式防护	○
	Front lower fine mesh guard 前下细网格防护	○
	Front upper fine mesh guard 前上细网格防护	○
	Top guard 顶防护	○
	Fire extinguisher 灭火器	●
	Mechanical suspension seat 机械悬浮座椅	●
	Heating and cooling air conditioning 冷暖空调	●
	Ordinary joystick 普通手柄	●
Lower Body 下车	3-rib reinforced steel track 3筋钢履带	●
	Track 600mm 履带	●
	Track 700mm 履带	○
	Track 800mm 履带	○
	Carrier rollers (single side) 托链轮（单侧）	●2个 2pcs
	Track rollers (single side) 支重轮（单侧）	●8个 8pcs
	Lower body Rail clamp 下车夹轨器（单侧）	●2个 2pcs
Electric 电气	Audible and visual alarm 声光报警器	○
	Emergency stop switch 急停开关	●
	Power interface 24V电源接口	●
	Rear view camera 后视摄像头	●
	Cab front dome light 驾驶室前顶灯	●2个 2pcs
	Boom work light 动臂工作灯	●2个 2pcs
	Turntable light 转台灯	●1个 1pc
	Refueling pump 燃油加注泵	○
	Radio AM/FM收音机	●
	GPS	●
Attachments 属具	Recommended breaker rod diameter 推荐破碎锤钎杆直径	155mm
	Side-mounted hammer 三角破碎锤	○
	Top-mounted hammer 直形破碎锤	○
Others 其他	Cab rearview mirror 驾驶室后视镜	●1个 1pc
	Handrail rearview mirror 扶手后视镜	●1个 1pc
	Cylinder sleeve 油缸护套	○

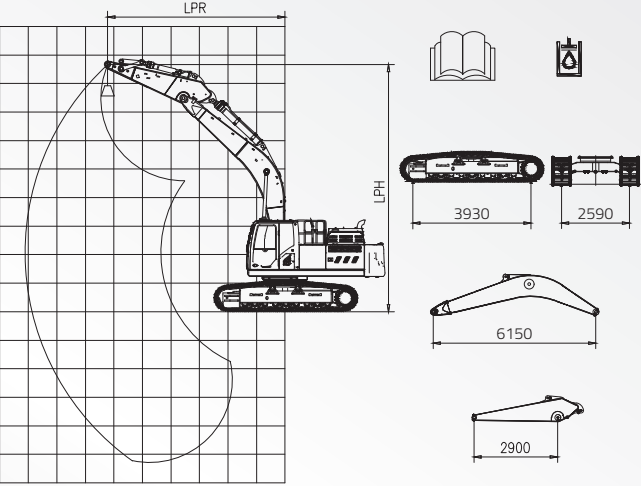
STANDARD 标配 ●
OPTIONAL 选配 ○

Classification（分类）	Configuration items（配置项）	ZE385G
Engine 发动机	Air filter 空气滤清器	●
	Swirl type air pre-filter 旋流式空气预滤器	●
	Oil bath air pre-filter 油浴式空气预滤器	○
Hydraulic System 液压系统	Hammer plumbing flow adjustment 破碎管路流量调节	○
	Breaker pipeline 破碎锤管路	○
Cab 驾驶室	Cab 司机室	●
	ROPS	○
	Skeleton guard 栅格式防护	○
	Front lower fine mesh guard 前下细网格防护	●
	Front upper fine mesh guard 前上细网格防护	○
	Top guard 顶防护	○
	Fire extinguisher 灭火器	●
	Mechanical suspension seat 机械悬浮座椅	●
	Heating and cooling air conditioning 冷暖空调	●
	Ordinary joystick 普通手柄	●
Lower Body 下车	3-rib reinforced steel track 3筋钢履带	●
	Track 600mm 履带	●
	Track 700mm 履带	○
	Track 800mm 履带	○
	Carrier rollers (single side) 托链轮（单侧）	●2个 2pcs
	Track rollers (single side) 支重轮（单侧）	●9个 9pcs
	Lower body Rail clamp 下车夹轨器（单侧）	●3个 3pcs
Electric 电气	Audible and visual alarm 声光报警器	○
	Emergency stop switch 急停开关	●
	Power interface 24V电源接口	●
	Rear view camera 后视摄像头	●
	Cab front dome light 驾驶室前顶灯	●2个 2pcs
	Boom work light 动臂工作灯	●2个 2pcs
	Turntable light 转台灯	●1个 1pc
	Refueling pump 燃油加注泵	○
	Radio AM/FM收音机	●
	GPS	●
Attachments 属具	Recommended breaker rod diameter 推荐破碎锤钎杆直径	165mm
	Side-mounted hammer 三角破碎锤	○
	Top-mounted hammer 直形破碎锤	○
Others 其他	Cab rearview mirror 驾驶室后视镜	●1个 1pc
	Handrail rearview mirror 扶手后视镜	●1个 1pc
	Cylinder sleeve 油缸护套	○

起吊能力表
LIFT CAPACITY

ZE335G

Do not attempt to lift or hold any load that is greater than these rated values at their specified lift-point radius and height.
The lift point is located at the centreline of the bucket pivot mounting pin on the arm.
在规定的起吊点半径和高度下，不要起吊大于额定值的负载。
起吊点位于斗杆与铲斗连接的销轴孔中心。



LPH	额定起吊能力 (kg) Rated lift capacity (kg)												
	LPR										最大半径处的起吊能力 Lift capacity at maximum radius		
	3.0m		4.5m		6.0m		7.5m		8.5m				
m	纵向 End	侧向 Side	纵向 End	侧向 Side	纵向 End	侧向 Side	纵向 End	侧向 Side	纵向 End	侧向 Side	纵向 End	侧向 Side	m
7.5											*7022	*7022	6.90
6.0							*7687	6400			*6724	5838	7.89
4.5			*11444	*11444	*9178	8887	*8004	6234			*6736	5043	8.49
3.0			*13962	12730	*10339	8358	*8539	5983	7168	4910	6776	4638	8.80
1.5			*15746	11854	*11325	7889	8477	5734	7012	4766	6606	4492	8.84
Grade			*16108	11478	11601	7594	8289	5562	6909	4670	6774	4583	8.62
-1.5	*15306	*15306	*15373	11429	11478	7486	8224	5503			7374	4969	8.11
-3.0	*17898	*17898	*13582	11572	*10316	7558					7912	5867	7.26
-4.5	*12981	*12981	*10199	*10199							7305	*7305	5.91

标有星号(*)的值受液压能力限制,见注2。
Capacities marked with an asterisk (*) are limited by hydraulic capacities. See Note 2.

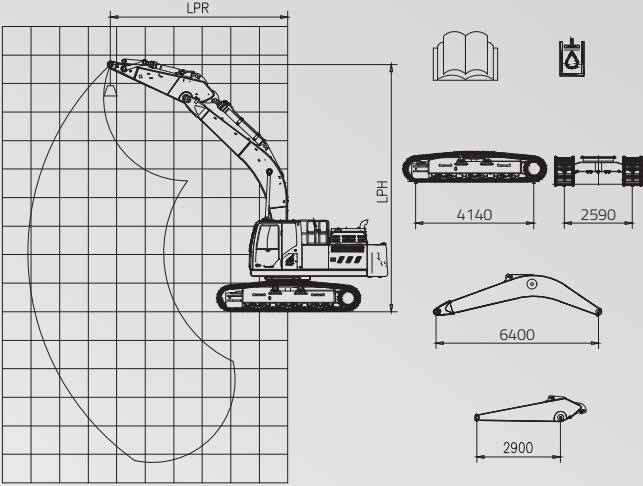
- 吊索和任何辅助起吊装置的重量应从额定载荷中扣除，以确定可提升的净载荷。
The mass of slings and any auxiliary lifting devices shall be deducted from the rated load to determine the net load that may be lifted.
- 起吊能力是基于机器位于坚实的，均匀的支撑表面，使用者应考虑到松软或不平整的地面等工作条件。
Lift capacities are based on the machine standing on a firm, uniform supporting surface. The user shall make allowances for job conditions such as soft or uneven ground.
- 操作人员在操作机器前，应充分熟悉制造商提供的操作手册和安全手册。
The operator should be fully acquainted with the Operator's Manual and the Operating Safety Manual furnished by the manufacturer before operating the machine.

- 注1：所示的起吊能力是没有启用增压模式的。
NOTE 1 Lift capacities shown are without the power boost feature engaged.
- 注2：所示的起吊能力不超过最小倾翻载荷的75%或液压能力的87%。
NOTE 2 Lift capacities shown do not exceed 75% of minimum tipping loads or 87% of hydraulic capacities.
- 注3：最不稳定的位置在侧面。
NOTE 3 The least stable position is over the side.
- 注4：起吊能力仅适用于制造商最初制造并正常配置的机器。
NOTE 4 Lift capacities apply only to the machine as originally manufactured and normally equipped by the manufacturer.
- 注5:整机总质量为33500kg,包括600mm的3筋履带、6.15m的动臂、2.9m的斗杆、所有的工作液体和一个75kg的操作人员。
NOTE 5 The total mass of the machine is 33500kg :Included in this mass are 600mm 3-rib reinforced steel track, 6.15m boom, 2.9m arm, all operating fluids and a 75kg operator.
- 注6：起吊能力符合ISO 10567:2007。
NOTE 6 Lift capacities are in compliance with ISO 10567:2007.

起吊能力表
LIFT CAPACITY

ZE385G

Do not attempt to lift or hold any load that is greater than these rated values at their specified lift-point radius and height.
The lift point is located at the centreline of the bucket pivot mounting pin on the arm.
在规定的起吊点半径和高度下，不要起吊大于额定值的负载。
起吊点位于斗杆与铲斗连接的销轴孔中心。



LPH	额定起吊能力 (kg) Rated lift capacity (kg)												
	LPR										最大半径处的起吊能力 Lift capacity at maximum radius		
	3.0m		4.5m		6.0m		7.5m		9.0m				
m	纵向 End	侧向 Side	纵向 End	侧向 Side	纵向 End	侧向 Side	纵向 End	侧向 Side	纵向 End	侧向 Side	纵向 End	侧向 Side	m
7.5											*7526	*7526	7.28
6.0							*7913	7197			*7233	6119	8.21
4.5			*12383	*12383	*9701	*9701	*8322	6957			*7279	5333	8.78
3.0			*15015	13962	*10910	9237	*8896	6639	*7750	4982	*7755	4990	8.99
1.5			*16610	12986	*11877	8692	*9407	6346	*7883	4852	*7795	4771	9.10
Grade			*16726	12644	*12279	8367	*9617	6140			*7904	4870	8.87
-1.5	*15279	*15279	*15822	12619	*11952	8247	*9321	6079			*7966	5260	8.38
-3.0	*17990	*17990	*13980	12808	*10763	8362	*7984	6205			*7879	6160	7.55
-4.5	*13255	*13255	*10689	*10689	*7872	*7872					*7285	*7285	6.25

标有星号(*)的值受液压能力限制,见注2。
Capacities marked with an asterisk (*) are limited by hydraulic capacities. See Note 2.

- 吊索和任何辅助起吊装置的重量应从额定载荷中扣除，以确定可提升的净载荷。
The mass of slings and any auxiliary lifting devices shall be deducted from the rated load to determine the net load that may be lifted.
- 起吊能力是基于机器位于坚实的，均匀的支撑表面，使用者应考虑到松软或不平整的地面等工作条件。
Lift capacities are based on the machine standing on a firm, uniform supporting surface. The user shall make allowances for job conditions such as soft or uneven ground.
- 操作人员在操作机器前，应充分熟悉制造商提供的操作手册和安全手册。
The operator should be fully acquainted with the Operator's Manual and the Operating Safety Manual furnished by the manufacturer before operating the machine.

- 注1：所示的起吊能力是没有启用增压模式的。
NOTE 1 Lift capacities shown are without the power boost feature engaged.
- 注2：所示的起吊能力不超过最小倾翻载荷的75%或液压能力的87%。
NOTE 2 Lift capacities shown do not exceed 75% of minimum tipping loads or 87% of hydraulic capacities.
- 注3：最不稳定的位置在侧面。
NOTE 3 The least stable position is over the side.
- 注4：起吊能力仅适用于制造商最初制造并正常配置的机器。
NOTE 4 Lift capacities apply only to the machine as originally manufactured and normally equipped by the manufacturer.
- 注5:整机总质量为38000kg,包括600mm的3筋履带、6.4m的动臂、2.9m的斗杆、所有的工作液体和一个75kg的操作人员。
NOTE 5 The total mass of the machine is 38000kg :Included in this mass are 600mm 3-rib reinforced steel track, 6.4m boom, 2.9m arm, all operating fluids and a 75kg operator.
- 注6：起吊能力符合ISO 10567:2007。
NOTE 6 Lift capacities are in compliance with ISO 10567:2007.