

# 科技中联, 匠心相伴

## ZOOMLION TECHNOLOGY WITH INGENUITY AND CARE



全球领先的挖掘机智能制造工厂

The world's leading excavator intelligent manufacturing factory

中联智慧产业城土方机械园区拥有行业领先的智能化、柔性化的挖掘机工厂, 从一块钢板到一台挖掘机, 以高精度的焊接工艺、高可靠的装配工艺、高级别的涂装工艺和严苛的品质管控, 让每一台交付的挖掘机都具备极致品质。Zoomlion Smart City Earthmoving Machinery Park is an industry-leading intelligent and flexible excavator factory. From a piece of steel plate to an excavator, with high-precision welding process, highly reliable assembly process, high-level coating process and strict quality control, each excavator is delivered with ultimate quality.



Zoomlion Heavy Industry Science & Technology Co.,Ltd.

Add: No.361, South Yipen Road, Changsha, Hunan Province, P.R.China 410013      Email: earthmoving@zoomlion.com  
Copyright©2025 Zoomlion. All rights reserved. Reproduction and copying of any part of contents is not allowed for any purposes without Zoomlion's approval.  
Note: Materials and specifications are subject to change without notice. Featured machines in photos may include additional equipment.



# ZOOMLION 260 HORSEPOWER CRAWLER BULLDOZER

中联重科260马力段履带式推土机  
ZD260G





# VISION CREATES FUTURE

思想构筑未来

## ZD260G

Engine rated power (发动机功率): 187kW / 1850rpm

Operating weight (操作重量): 23850kg - 24330kg

## ZD260G MGP

Engine rated power (发动机功率): 187kW / 1850rpm

Operating weight (操作重量): 25800kg - 26016kg

“MGP” 为湿地型  
“MGP” for wetland working condition





## Engine 动力系统

Turbo pre-filtration is standard on the intake system and a three-stage filtration system is standard on the fuel system to increase working conditions adaptability.  
进气系统标配涡轮增压预滤，燃油系统标配三级过滤系统，增加工况适用性。

## Electrical System 电气系统

Integrated electrical control box, ensures convenient maintenance;  
集成电器控制盒，维保更方便；  
It is equipped with a USB charging port, which can meet the power needs of external devices.  
配置USB充电接口，满足外接设备用电需求。

## Hydraulic System 液压系统

Pilot-operated hydraulic system enhances operation comfort;  
液控先导系统，提升操控舒适性；  
External mounting of multi-way valves will improve serviceability;  
外置多路阀，提升维修性；  
Improved maintenance of the dozer through optimized steering safety valve arrangement;  
优化转向安全阀布置，提升维修性；  
Hydraulic line layouts were carried out to facilitate improved line reliability.  
优化液压管路布局，提高管路可靠性。

## Cab 驾驶室

Special-shaped frame improves the rigidity of the cab, providing more effective protection for drivers;  
异形型材骨架，提升驾驶室刚性，为驾驶人员提供更有效保护；  
The cab space is increased by 16% and the operating field of view is optimized, which can enhance driving comfort.  
驾驶室空间增加16%，作业视野优化，提升驾驶舒适性。

## Working Equipment 工作装置

It optimizes the structure of blade and improves the welding craftsmanship;  
优化铲刀体结构，提高焊接工艺性；  
It improves the oil cylinder support joint form to facilitate disassembly and assembly;  
改进油缸支座联接形式，方便拆装；  
It has a variety of optional configurations to meet different working conditions.  
多种选装配置，满足不同的工况。

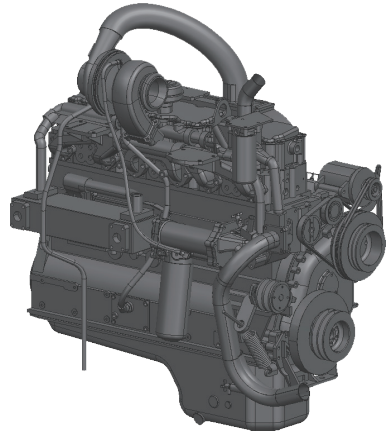
## Travel System 行走系统

Increase the length of grounding facilitates the passability of the whole machine.  
增加接地长度，提升整机通过性。



# HIGH EFFICIENCY & ENERGY SAVING

## 高效节能

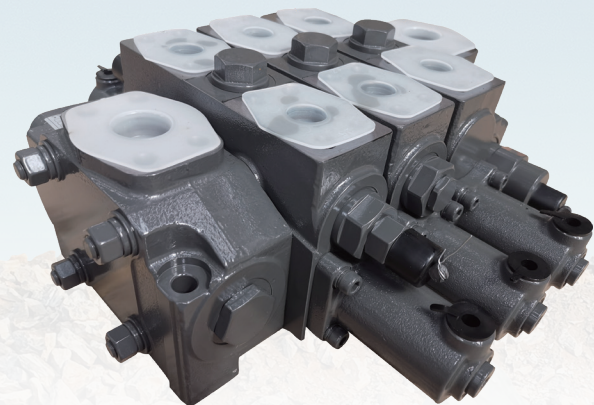


It adopts a mature power unit, which has been tested in the market for a long time and has sufficient power reserve, with a rated power of 187kW/1850rpm and a maximum torque of 1131N·m;

采用成熟动力单元，久经市场考验，动力储备足，额定功率187kW/1850rpm,最大扭矩1131N·m;

Fuel consumption of the bulldozer is reduced, and the comprehensive efficiency is improved, the overall ROI is more beneficial.

整机油耗降低，综合效率提升，整机收益更加观。



The hydraulic system has been upgraded from 14MPa to 21MPa, and the bulldozer has more lifting force and pushing force to meet the requirements of different working conditions;

液压系统由14MPa提升到21MPa,推土装置具备更大的提升力与推压力，满足不同工况作业需求；

The multi-way valve is external, the steering safety valve is rear-mounted, and the structural design of the engine guard has been optimized so that routine maintenance is easier.

多路阀外置、转向安全阀后置，发动机保护罩结构优化，日常维护保养更便捷。

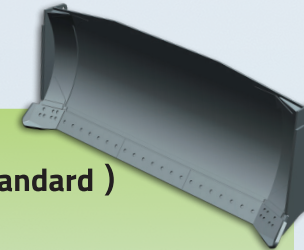


Fuel consumption of the bulldozer is reduced, and the comprehensive efficiency is improved.

整机接地长度增加11.7%、接地比压降低 8.4%，通过性更优异。

# WORKING DEVICES

## 工作装置

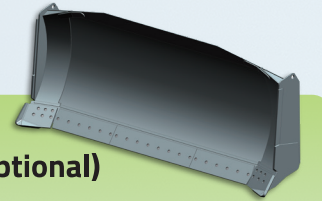


### Straight Tilt Blade (Standard)

#### 直倾铲 (标配)

The blade can be adjusted in the vertical plane to the left or right at a certain angle of inclination. With good flexibility, greater cutting and leveling ability, it is suitable for sand, stone, hard soil and other hard materials.

在垂直面内可向左或向右调整一定的倾斜角度，具有良好的灵活性、更大的切入力和平整能力。适合于砂石、硬土等比较坚硬的物料。

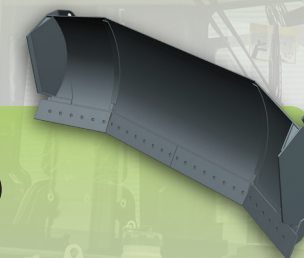


### Semi-U Blade (Optional)

#### 半U型铲 (选配)

Semi-U blade has the characteristics of both straight tilting blade and U blade, which not only has a large cutting force, but also has a good gathering effect in the process of bulldozing, which is suitable for a variety of working conditions.

半U型铲同时具备直倾铲和U型铲的特点，不但推土切削力大，而且推土过程中有很好的聚拢效果，适用于多种工况的作业要求。

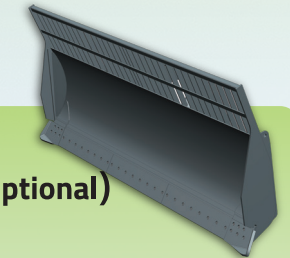


### U Blade (Optional)

#### U型铲 (选配)

The U blade has large capacity, with strong ability of collecting and transporting soil, in the process of pushing and transporting, and it can effectively prevent the material from overflowing out from both sides of the shovel blade, and it has a very good effect of gathering, and it is mainly suitable for transporting the soil over a long distance or the stacking of loose materials, such as pushing coal in the coal yard.

U型铲铲刀容量大，集土、运土能力强，在推运过程中，可有效防止物料从铲刀两侧溢出，具有很好的聚拢效果，主要适用于运土距离较远或松散物料的堆集工况，如煤场推煤作业等。

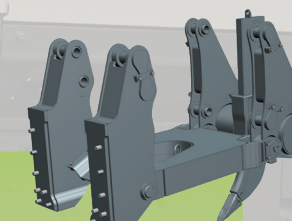


### Sanitation Blade (Optional)

#### 环卫铲 (选配)

This kind of blade is usually used in large and medium-sized garbage disposal site. The special raised part of the upper part of the blade can avoid the materials going into the back of the blade.

一般用于大中型垃圾处理场作业，铲刀上部特有的加高栏栅，可避免作业物料进入铲刀后侧。



### Single-Shank Ripper (Optional)

#### 单齿松土器 (选配)

It can be used for large area excavation of frozen soil, hard road surface, mine stripping construction and farmland infrastructure, instead of the traditional drilling and firing construction, so the construction is safer.

可用于大面积开挖冻土、坚硬的路面、矿山剥离施工和农田基建，代替传统的打眼放炮施工，作业施工安全。



### Triple-Shank Ripper (Optional)

#### 三齿松土器 (选配)

This ripper is mainly used for loosening hard pavement or frozen soil, and can effectively improve the stripping efficiency of hard shi layer when working with bulldozer.

主要用于疏松坚硬的路面或冻土，与推土铲配合作业，可有效提高硬土层剥离效率。



# COMFORTABLE DRIVING

## 驾驶舒适

Newly designed independent closed dust-proof cab, the sealing is greatly improved, effectively reducing the noise and dust pollution in the cab; the frame is welded with shaped tubes for higher strength, with novel and beautiful appearance.

全新设计的独立封闭防尘驾驶室，密封性大大提高，有效降低了驾驶室内噪音及粉尘污染；框架采用异形管材焊接而成，强度更高，外观造型新颖、美观。



It adopts hydraulic pilot control system to enhance handling comfort and reduce maneuvering force by 39%; and it adopts mature engine, which has been tested in the market for a long time, with high torque and sufficient power reserve;

采用液控先导系统，提升操控舒适性，操纵力降低39%；采用成熟动力单元，久经市场考验，扭矩大、动力储备足；

The cab has been newly upgraded and the interior is equipped with a variety of attachments to improve driver safety as well as overall operator comfort.

驾驶室全新升级，室内配备各种附件，提高了驾驶人员的驾驶安全以及整体的操作舒适性。

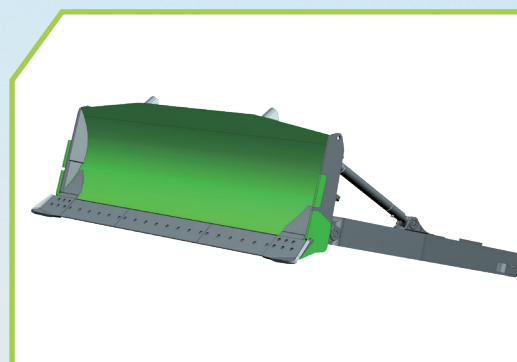


# RELIABLE & DURABLE

## 可靠耐用

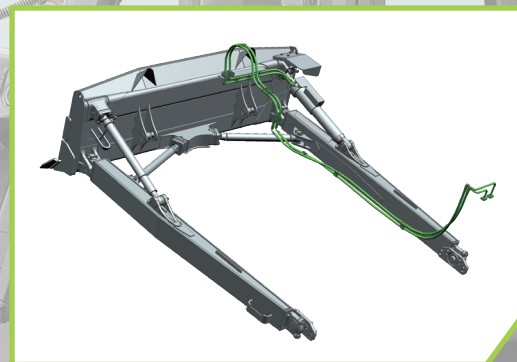
### Adaptive improvements for working devices

#### 工作装置适应性改进



The blade arc plate adopts high-strength wear-resistant materials, the structure of the blade is optimized, the service life is increased by 25%, and the connection of the blade adopts the bolt connection of tile cover, the structure is reliable, and the maintenance is simple.

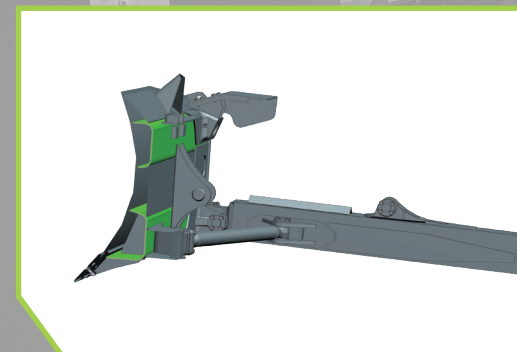
铲刀弧板等采用高强度耐磨材料、铲刀结构优化，使用寿命提升25%，铲刀连接采用瓦盖螺栓连接，结构可靠，维护简单。



The main oil circuit of the inclined oil circuit is arranged inside the car body, avoiding the damage caused by the relative movement of the soft and hard pipes arranged in the joint parts and the lack of strict protection, while the front pipeline and the lifting cylinder adopts the structure of tile cover connection, making it more convenient to dismantle and install the bulldozing device when the equipment is transferred to other places.

倾斜油路主油路布置在车体内部，避免了关节部位布置的软硬管因相对运动及保护不严密导致的损坏，同时前置的管路及提升油缸采用瓦盖联接的结构使得设备在转场时推土装置的拆装更为方便。

U-shaped plate takes welding structure  
U形板拼焊结构



Optimisation of lifting cylinder support structure  
提升油缸支座结构优化





# CUSTOMER SERVICE 客户服务

# CONVENIENT MAINTENANCE 维保便利



Oil filter maintenance  
机油滤更换



Air cleaner maintenance  
空滤清理



Fuel filter maintenance  
燃油滤更换



Replacing fuse  
保险更换



Refueling  
燃油加注



Rear axle oil refilling  
后桥加油



Final drive refueling  
终传动加油



Radiator maintenance  
散热器清扫



Oil tank draining  
工作油箱放油

Zoomlion promises that once you choose us, we are ready to respond with the first arrival and solution any time, anywhere. 中联重科承诺，一旦您选择了我们，我们将随时做好响应准备，在任何时间、任何地点第一时间到达并提供解决方案。

Various service content, professional service teams, global service networks and systematic technical support are readily available from Zoomlion for an effective response and solution upon your request no matter where you are in the world and what time it is. 中联重科随时提供各种服务内容、专业服务团队、全球服务网络和系统化的技术支持，无论您身处世界何时何地，均可应您的要求提供有效的响应和解决方案。



TECHNICAL PARAMETERS

技术参数

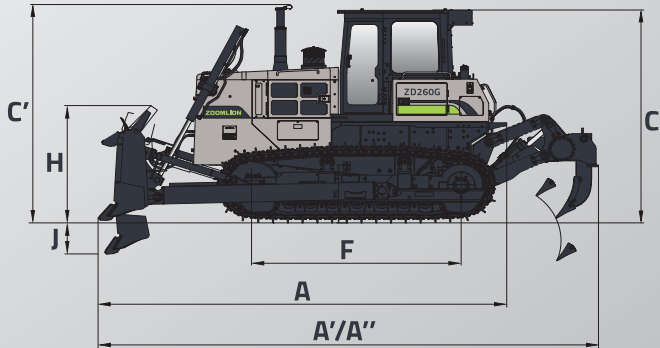
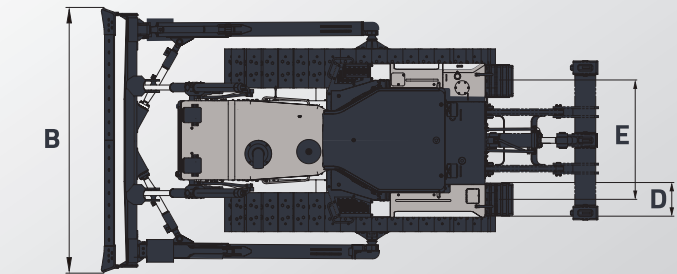
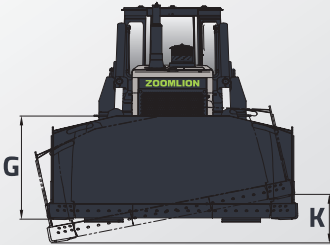
ZD260G	
Engine（发动机）	
Model 型号	Cummins 康明斯NT855-C280
Type 型式	Inline, turbocharged, coolant cooled, 4 stroke 直列、增压、水冷、四冲程
Displacement 发动机排量	14 L
Rated speed 额定转速	1850 rpm
Rated power 额定功率	187 kW
Maximum drawbar pull 最大牵引力	210kN（Straight Tilt Blade 直倾铲） 215kN（Semi-U Blade 半U型铲、U BladeU 型铲）
Maximum torque 最大扭矩	1131 kN/1200 rpm
Generator 发电机	28 V、60 A
Transmission（传动装置）	
Torque converter 液力变矩器	3元件1级1相 3 Components 1 stage 1 phase
Gearbox 变速箱	Power shift planetary transmission 动力换挡行星变速箱
Type 型式	Planetary gear, multi-disc clutch, manual control, power shift 行星齿轮、多片离合、手动操纵、动力换挡
Gear and speed 变速档位、速度	Forward I 前进 I 档：0-3.6 km/h Forward II 前进 II 档：0-6.5 km/h Forward III 前进 III 档：0-11.2 km/h Reverse I 后退 I 档：0-4.3 km/h Reverse II 后退 II 档：0-7.7 km/h Reverse III 后退 III 档：0-13.2 km/h
Cooling method 冷却方式	Water cooled 水冷
Central drive 中央传动	Spiral bevel gear, Splash lubricated 螺旋伞齿轮、飞溅润滑式
Undercarriage（底盘）	
Suspension type 悬挂方式	Semi-rigid, balanced beam floating type 半刚性、平衡梁浮动式
Number of carrier rollers (each side) 托链轮数（每侧）	2
Number of track rollers (each side) 支重轮数（每侧）	7
Number of idler (each side) 引导轮数（每侧）	1
Track type 履带型式	Assembled, single grouser 装配式单履齿
Track pitch 履带节距	216 mm
Number of track pad (each side) 履带板数（每侧）	41
Ground pressure (kPa) 接地比压（kPa）	61.3 kPa（Straight Tilt Blade 直倾铲） 62.2 kPa（Semi-U Blade 半U型铲） 62.5 kPa（U BladeU 型铲）
Ground clearance 离地间隙	405 mm
Minimum turning radius 最小转弯半径	3515 mm/4550 mm

ZD260G	
Steering system（转向系统）	
Steering clutch 转向离合器	Wet type, multi-disc clutch type, spring pressing, operating oil pressure action 湿式、多片离合器式、弹簧压紧、操作油压动作
Steering brake 转向制动器	Wet, floating belt, pedal operation (with hydraulic booster) 湿式、浮动带式、脚踏操作（附油压助力器）
Final drive 终传动	Spur gear two-stage reduction, splash lubrication 直齿轮二级减速、飞溅润滑
Operating weight (kg)（操作重量）	
Straight Tilt Blade 直倾铲	23850 kg
Semi-U Blade 半U型铲	24200 kg
U Blade U型铲	24330 kg
Hydraulic control mechanism（液压控制机构）	
Type 型式	Gear pump 齿轮泵
Working pressure 工作压力	21 MPa
Maximum flow 最大流量	198 L/min
Control method 控制型式	Pilot 先导
Working equipment（工作装置）	
Blade material 刀片材料	27 MnTiB
Blade cylinder diameter 铲刀油缸缸径	100 mm
Service refill capacities（服务保养加注容量）	
Cooling system 冷却系统	72 L
Fuel tank 燃油箱	480 L
Engine oil 发动机油底壳	43 L
Torque converter, gearbox 液力变矩器、变速箱	122 L
Rear axle box 后桥箱	122 L
Final drive (each side) 终传动（每侧）	41 L
Working equipment oil tank 工作装置油箱	145 L
Lubrication system（润滑系统）	
Gearbox 变速箱	forced lubrication 强制润滑
Central drive shaft 中央传动轴	splash lubrication 飞溅式润滑
Steering brake 转向制动器	splash lubrication 飞溅式润滑
Final drive 终传动	splash lubrication 飞溅式润滑
Gradeability（爬坡能力）	
30°	

DIMENSION

整机尺寸

ZD260G			
	Straight Tilt Blade 直倾铲	Semi-U Blade 半U型铲	U Blade U型铲
A Overall length (without ripper) A 总长度（无松土器）	5760 mm	5985 mm	6106 mm
A' Overall length (with single-shank ripper) A' 总长度（带单齿松土器）	7465 mm	7690 mm	7811 mm
A'' Overall length (with triple-shank ripper) A'' 总长度（带三齿松土器）	7107 mm	7332 mm	7453 mm
B Overall width (Blade width) B 总宽度（铲刀宽度）	3725 mm	3645 mm	4213 mm
C Overall height (to cab top) C 总高度（至驾驶室顶端）	3370 mm		
C' Overall height (to exhaust pipe top) C' 总高度（至排气管顶端）	3430 mm		
D Track pad width D 履带板宽度	560 mm		
E Track gauge E 履带轨距	2000 mm		
F Length of track on ground F 履带轴距	3050 mm		
G Blade height G 铲刀高度	1315 mm	1580 mm	1393 mm
H Maximum lift of blade above ground H 铲刀最大提升高度	1200 mm	1200 mm	1200 mm
J Maximum drop of blade below ground J 铲刀最大下降量	540 mm	540 mm	540 mm
K Maximum tilt of blade K 铲刀最大倾斜量	735 mm	735 mm	735 mm
Blade capacity 铲刀容量	6.4 m³	7.3 m³	9.3 m³





STANDARD & OPTIONAL FEATURES

标选配清单

Classification（分类）	Configuration items（配置项）	ZD260G
Engine 动力系统	Air filter 空气滤清器	●
	Air pre-cleaner 进气预滤	●
Radiator 水箱	Normal radiator 普通水箱	●
	High cooling capacity radiator 沙漠水箱	○
Hydraulic system 液压系统	Working pump 工作泵	●
	Multiple valve 多路阀	●
Transmission 传动系统	Torque converter 变矩器	●
	Gearbox 变速箱	●
Electrical system 电气系统	Reversing alarm 倒车报警	●
	Caution light 警示灯	●
	Fuel level sensor 燃油液位传感器	●
	GPS	●
Front working equipment 前工作装置	Straight Tilt Blade 直倾铲	●
	Semi-U Blade 半U型铲	○
	U Blade U型铲	○
Rear working equipment 后工作装置	Triple-shank ripper 三齿松土器	○
	Single-shank ripper 单齿松土器	○
Travel system 行走系统	Track 560mm 履带	●
	Track 610mm 履带	○
	Track 660mm 履带	○
	Long fender assembly 长挡泥板总成	●
Cab 驾驶室	Radio 收音机	●
	Fire extinguisher 灭火器	●
FOPS&ROPS	Four pillars anti-tip frame 四柱防翻架	○
	Six pillars anti-tip frame 六柱防翻架	○
Air conditioner 空调系统	Heating and cooling air conditioner 冷暖空调	○
	Cooling only air conditioner 单冷空调	○

STANDARD 标配 ●

OPTIONAL 选配 ○

STANDARD & OPTIONAL FEATURES

标选配清单

Classification（分类）	Configuration items（配置项）	ZD260G MGP
Engine 动力系统	Air filter 空气滤清器	●
	Air pre-cleaner 进气预滤	●
Radiator 水箱	Normal radiator 普通水箱	●
	High cooling capacity radiator 沙漠水箱	○
Hydraulic system 液压系统	Working pump 工作泵	●
	Multiple valve 多路阀	●
Transmission 传动系统	Torque converter 变矩器	●
	Gearbox 变速箱	●
Electrical system 电气系统	Reversing alarm 倒车报警	●
	Caution light 警示灯	●
	Fuel level sensor 燃油液位传感器	●
	GPS	●
Front working equipment 前工作装置	Straight Tilt Blade 直倾铲	●
	Sanitation Blade 环卫铲	○
Rear working equipment 后工作装置	Triple-shank ripper 三齿松土器	○
	Single-shank ripper 单齿松土器	○
Travel system 行走系统	Track 910mm 履带	●
	Long fender assembly 长挡泥板总成	○
	Short fender assembly 短挡泥板总成	●
Cab 驾驶室	Radio 收音机	●
	Fire extinguisher 灭火器	●
FOPS&ROPS	Four pillars anti-tip frame 四柱防翻架	○
	Six pillars anti-tip frame 六柱防翻架	○
Air conditioner 空调系统	Heating and cooling air conditioner 冷暖空调	○
	Cooling only air conditioner 单冷空调	○

STANDARD 标配 ●

OPTIONAL 选配 ○