

ZOOMLION TECHNOLOGY WITH INGENUITY AND CARE



THE WORLD'S LEADING EXCAVATOR INTELLIGENT MANUFACTURING FACTORY

ZOOMLION Smart City Earthmoving Machinery Park is an industry-leading intelligent and flexible excavator factory. From a piece of steel plate to an excavator, with high-precision welding process, highly reliable assembly process, high-level coating process and strict quality control, each excavator is delivered with ultimate quality.



ZOOMLION

Zoomlion Heavy Industry Science & Technology Co.,Ltd.

Add: Zoomlion Smart City Headquarters Building, No.613 Naqiu Road, Wangcheng District, Changsha, Hunan, China 410221
Email: earthmoving@zoomlion.com
Copyright © Zoomlion. All rights reserved. Reproduction and copying of any part of contents is not allowed for any purposes without Zoomlion's approval.
Note: Materials and specifications are subject to change without notice. Featured machines in photos may include additional equipment.



ZOOMLION WHEEL LOADER

ZWL75G



ZOOMLION

VISION CREATES FUTURE

ZWL75G

Rated power: 199 kW / 2200 rpm

Operating Weight: 25000 kg

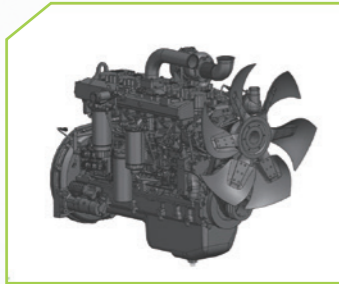
Rated Payload: 7500 kg

Bucket Capacity: 5 (3.5 ~ 7) m³



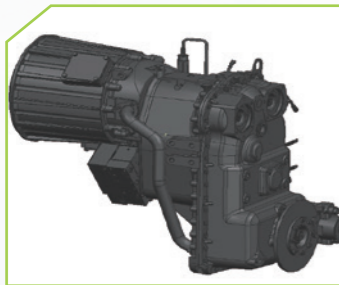
CONFIGURATION & EFFICIENCY

POWER SYSTEM



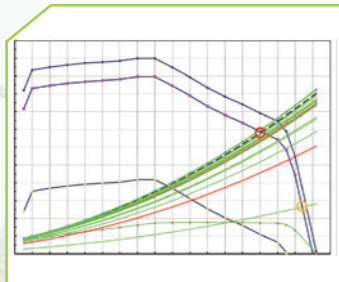
Robust power, optimal efficiency

- Equipped with high-power electronically controlled high-pressure common rail technology, it enables multiple injections in a single cycle, delivering a large torque reserve coefficient and robust power output; With the application of a reinforced cylinder block, the in-cylinder explosion pressure is further elevated, enabling more thorough combustion, delivering stronger power performance and greater driving force. By adopting the 4-valve technology, the air intake is more sufficient, and the combustion efficiency is heightened to a superior level.
- The P/E (heavy load, medium-light load) two-stage power control mode allows for reasonable selection according to working conditions, reducing energy consumption and improving productivity.



Large displacement, excellent compatibility

- The hydraulic automatic shifting planetary transmission and large-capacity dual-turbine torque converter, equipped with Zoomlion's professional power matching technology, achieve perfect matching with the engine.

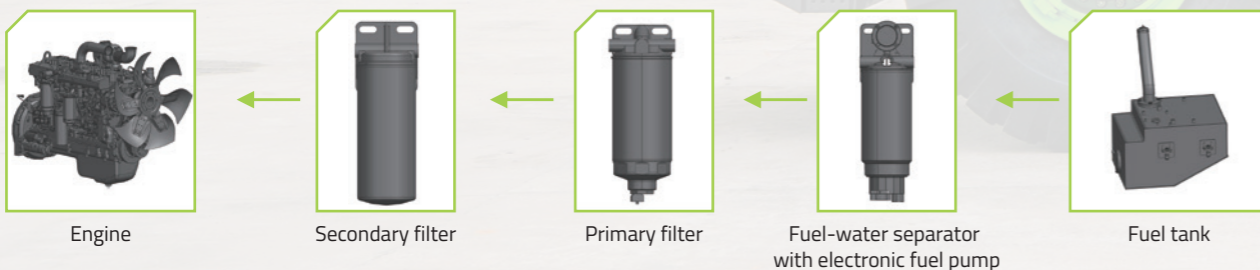


Powerful strength, high velocity

- In combined working conditions (traveling and operating simultaneously), it enjoys substantial rimpull and lifting force, together with strong explosive power and high operation efficiency. Through reasonable matching with the engine, torque converter, drive shaft and drive axle, it realizes maximum operation efficiency, featuring excellent speed acceleration performance.

Multi-stage fuel filtration

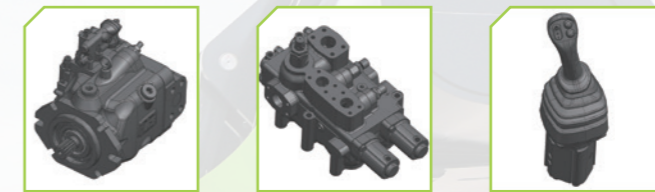
Multi-stage filtration system precisely captures contaminants of different particle sizes, effectively extending filter service life and reducing maintenance costs. This safeguards your investment by minimizing downtime and optimizing operational efficiency. Optional biodiesel specific oil-water separator.



HYDRAULIC SYSTEM

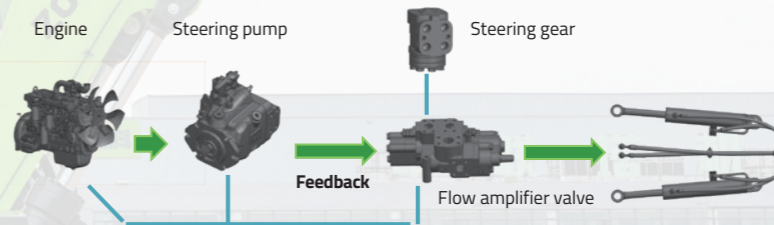
Strong capability, exceptional intelligence

The intelligent fixed-variable hydraulic system adaptively adjusts its parameters in real-time to suit varying working conditions. It delivers exceptional breakout force during heavy-duty operations and minimizes flow losses in rapid shoveling and loading.



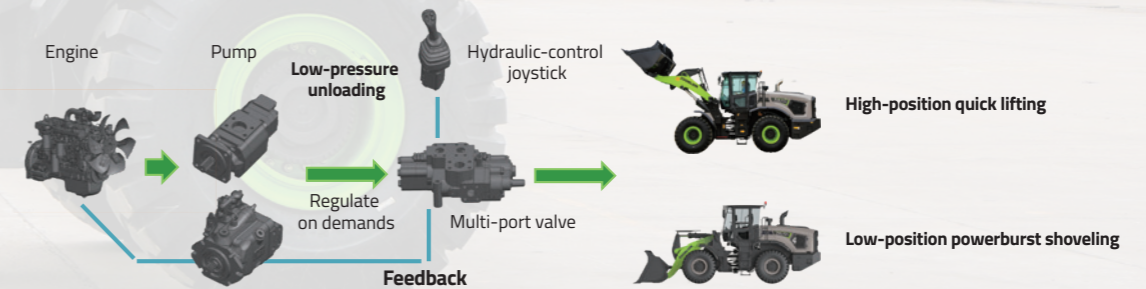
Fixed-variable hydraulics + load sensing system + hydraulic pilot control

Steering and handling: the variable piston pump delivers flow on-demand.



Leading full-hydraulic dynamic load-sensing steering system ensures light operation and flexible steering. The steering system delivers flow on-demand and regulates pressure in response to load variations, featuring sensitive response and high control accuracy for optimal adaptation to complex working conditions.

The variable piston pump delivers on-demand flow, while the service pump is promptly disengaged.



Advanced dual-pump flow merging fixed-variable technology integrates stable flow output of fixed hydraulic pumps with flexible adjustment of variable hydraulic pumps, automatically switching to optimal working modes for heavy-duty and light-duty worksites to effectively reduce comprehensive energy consumption.

PERFORMANCE ADAPTABILITY



Full-hydraulic braking system

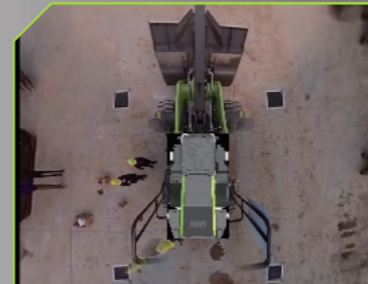
It features precise control, rapid response, and strong braking force, and can adapt to harsh environments such as high and low temperatures and high dust levels.

Independent braking of front and rear drive axles improves driving safety.



Optional wet-type drive axle

Exceptional braking performance with efficient heat dissipation; Sealed design prevents muddy water from entering the brake chamber, maintaining excellent braking performance even in wading or muddy conditions.



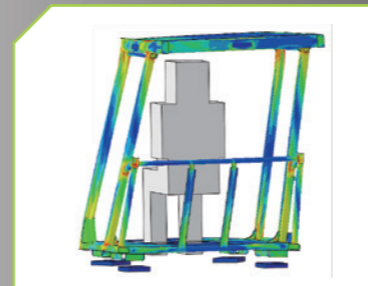
Optional 360° surround view camera

It eliminates blind spots to significantly enhance safety, and features easy operation to reduce driver fatigue.



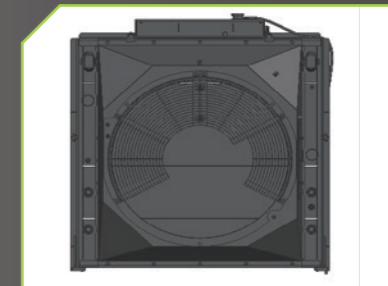
Strong adaptability to low temperatures

Equipped with air intake grille heating of engine, it allows for rapid air intake preheating to reduce starting wear. The large-capacity starter battery can still provide sufficient starting power when battery capacity decreases at low temperatures.



FOPS & ROPS cab

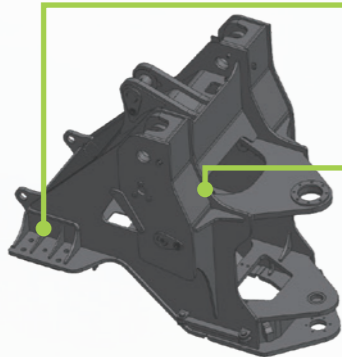
Adopting an enclosed structure welded with high-strength steel, it can withstand the impact of 25-ton vertical load. Meeting the international standard certification of ISO3449/3471, it is specially designed for medium and large loaders with ultimate safety protection.



The large wave distance single-layer radiator design provides a larger heat dissipation area, a reasonable system layout, and a comprehensive improvement in heat dissipation efficiency, meeting the requirements of a 50 °C environment.

RELIABILITY & DURABILITY

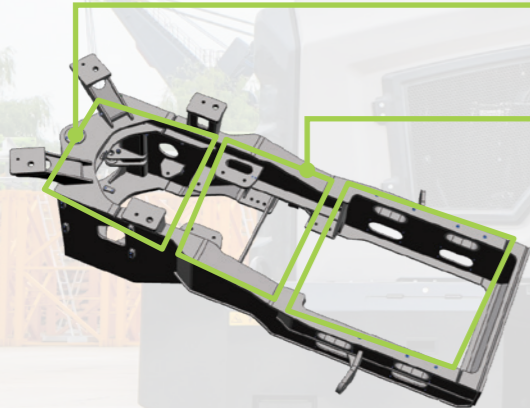
● High-strength wing-box front frame



Reinforced front axle mounting seat, with additional "U-shaped support ribs" structure, can effectively distribute heavy front axle loads and enhance reliability.

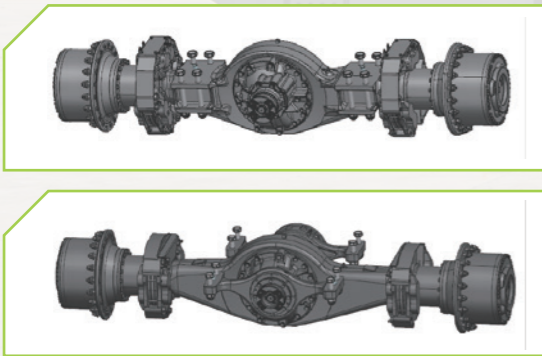
Reinforced left and right wing-box structures with a 6% increase in cross-sectional area, enhancing load-bearing capacity.

● High-load-bearing articulated rear frame



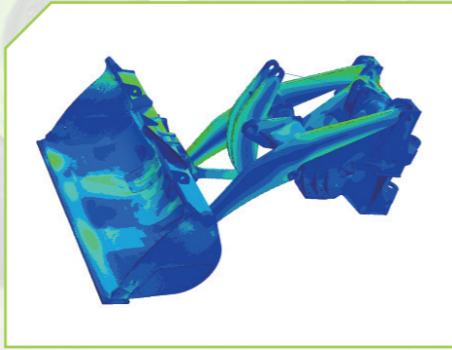
Large-sized articulated opening effectively bears heavy transverse torque loads on the frame.

Large-sized web height effectively bears the longitudinal vertical loads of the frame. This structure has obtained a utility model patent: A Reinforced Rear Frame for Three-Section Loaders.



Heavy-duty drive axle

High static load capacity ensures reliability under extreme working conditions; The rear axle adopts an integrated cast swing frame, featuring strong load-bearing capacity and low failure rate; Fully hydraulic caliper braking, safe and reliable.



High reliability verified by sufficient testing

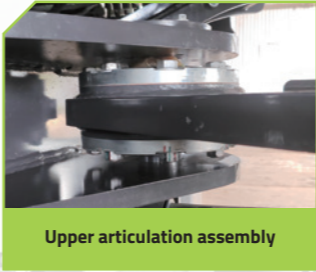
Structural parts undergo CAE analysis to reduce stress concentration; Dynamic loading test stands and extreme fatigue durability tests are fully utilized to ensure the high reliability of the structure.

SAFE AND RELIABLE INTERMEDIATE HINGE

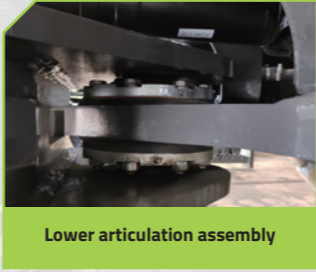
The intermediate articulation is equipped with double tapered roller bearings, featuring strong load-bearing capacity and adaptability to high-intensity harsh working conditions.



Double tapered roller bearings



Upper articulation assembly

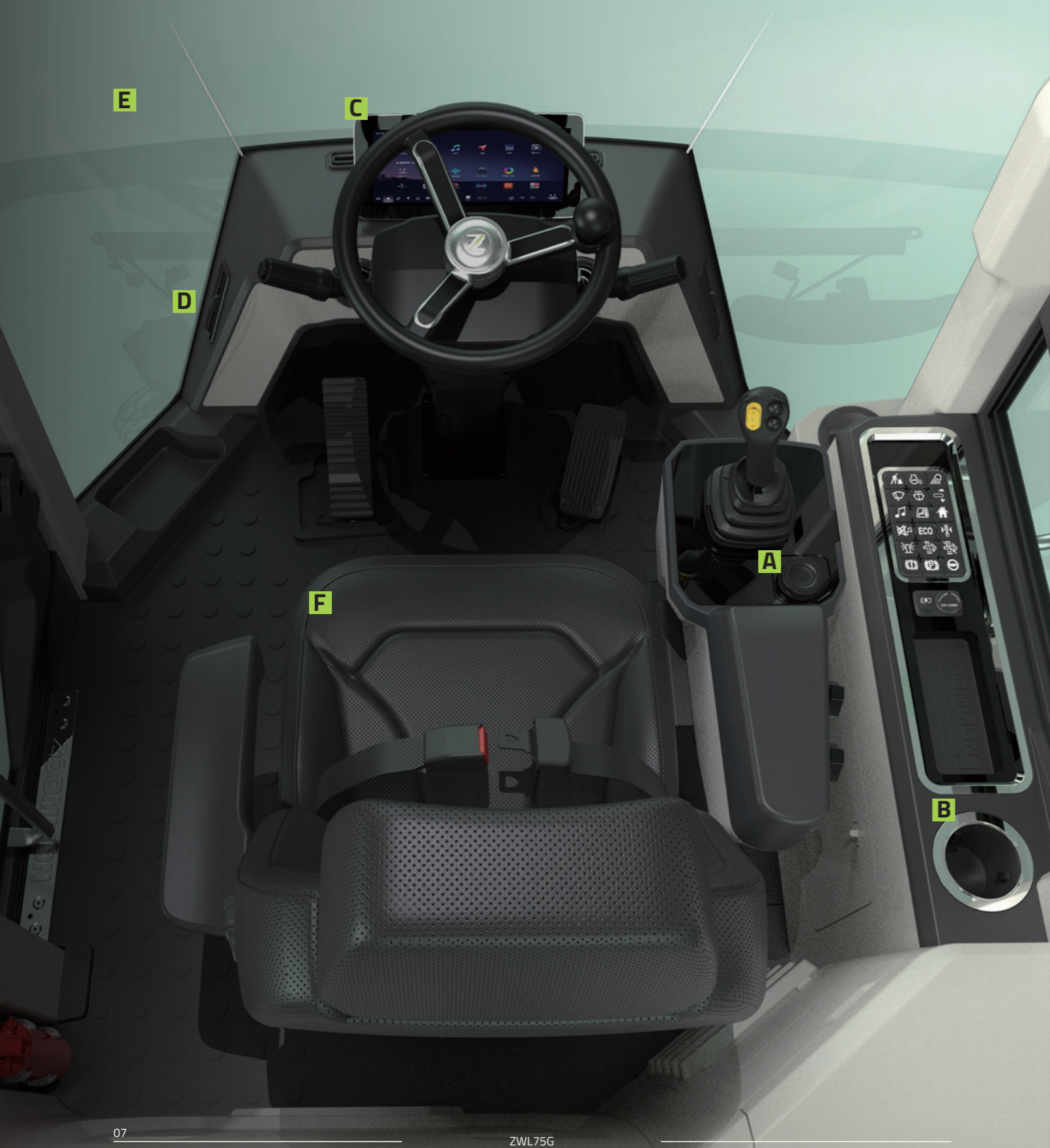


Lower articulation assembly



Equipped with multiple original patented technologies and subjected to thousands of quenching cycles under harsh working conditions, the control commands are precise to the millisecond level, resulting in a 50% increase in product reliability and durability.

COMFORT & INTELLIGENCE



Sedan-level experience brings maximum driving comfort



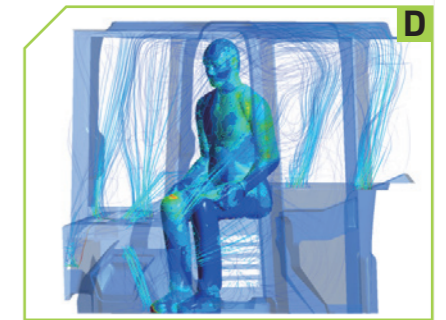
Push start



Cup holder



12.3-inch LCD touch-screen monitor, with standard back-up camera; Equipped with fault detection and fault codes display.



The cab is hermetically sealed with a pressure of +50 Pa, and equipped with N95-class filter elements, with a PM2.5 filtration efficiency of $\geq 99\%$



With 360° large-area panoramic glass stretching to the floor, the vision area reaches 3.52 m², the largest in the industry, ensuring extremely broad operational visibility.



Spacious operating space, adjustable armrest box and handle, providing a more comfortable driving experience.

CONVENIENT MAINTENANCE



The engine hood can tilt backward by more than 60° , providing convenient maintenance, repair and inspection for internal filters with a large service space.



The pilot filter and brake filter are centrally arranged on the right side, within easy reach for maintenance and convenience.



Grease lubrication points are centrally led out for ground-level access, enabling convenient daily maintenance.

CUSTOMER SERVICE

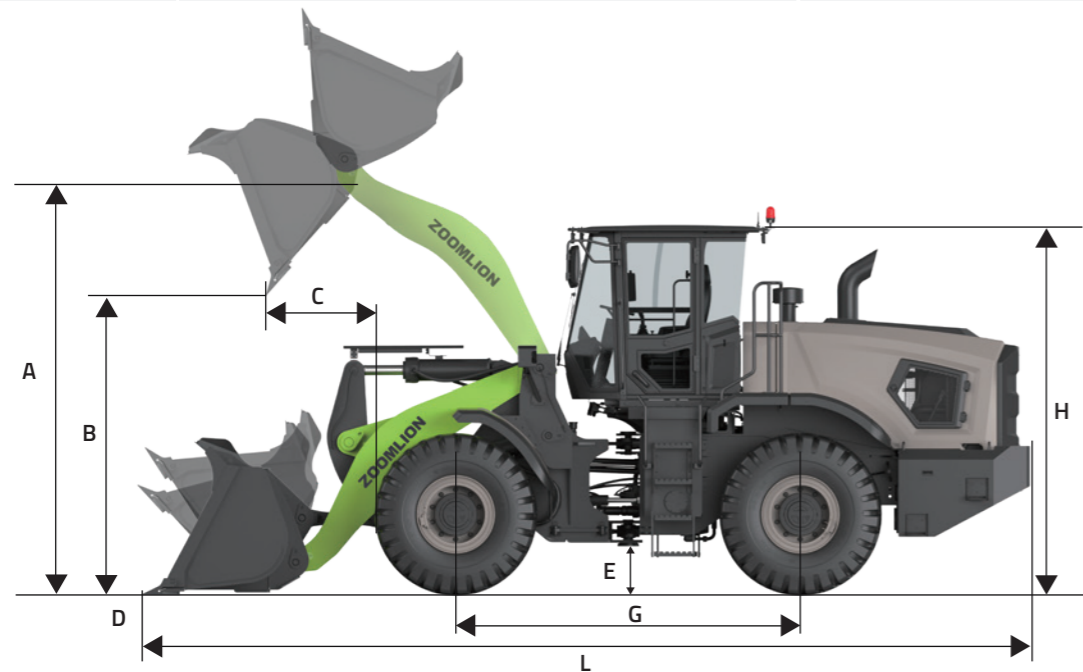
Zoomlion's service technicians are distributed in key countries worldwide. Based on customers' equipment distribution, technicians maintain long-term stationed presence, ensuring immediate response to customer needs. Every year, Zoomlion service technicians carry out the Service Tour to visit both new and old customers to collect rational suggestions and attentively listen to service demands.

We promptly fulfill customers' needs and respond to reasonable requests. We provide training for operators of each equipment, fully committed to ensuring stable operation of customer equipment.

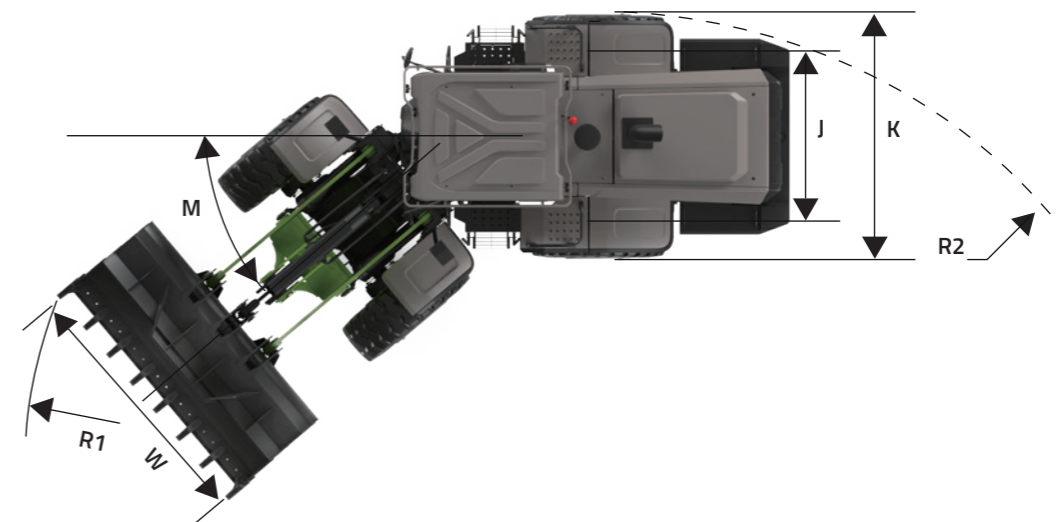


TECHNICAL PARAMETERS

Category	Item	ZWL75G
Overall Machine Parameters	Operating weight	25000 kg
	Rated load	7500 kg
	Rated bucket capacity	5 m ³
	Optional bucket capacity	3.5-7 m ³
	Max. breakout force	210 kN
	Max. rimpull	220kN
	Lift-dump-descend time	10.2 s
	Max. travel speed	6.75/12.5/25.4/39 km/h
	Max. gradeability	27°
	L Overall length	9543 mm
	W Bucket width	3430 mm
	H Overall height	3660 mm
	A Boom hinge point height	4840 mm
	B Dump height (45° dump angle)	3540 mm
	C Dump reach (45° dump angle)	1265 mm
	G Wheelbase	3550 mm
	J Tread	2380 mm
	M Steering angle	40°
	R2 Min. turning radius (outside of rear wheels)	6430mm
	R1 Min. turning radius (outside of buckets)	7511mm
E Min. ground clearance	480mm	
Tipping load, straight	180 kN	
Tipping load, full turn	160 kN	



Category	Item	ZWL75G
Engine	Engine model	WP10G270E341
	Type	Turbocharged, in-line, direct injection, water-cooling, four stroke cycles
	Power	199/2200 kW/rpm
Drivetrain	Displacement	9.726 L
	Transmission	Automatic power shift
	Drive axle	Dry
Hydraulic System	Tire	26.5-25-32PR
	System type	Fixed-variable hydraulics
	Steering pump type	Swash plate variable piston pump
	Service pump type	Gear pump
	Steering system pressure	21 Mpa
Brake System	Working system pressure	25 Mpa
	System type	Full-hydraulic braking system
	Brake system pressure	13 Mpa
Service Refill Capacities	Fuel tank volume	380 L
	Transmission oil capacity	50 L
	Hydraulic tank	185 L
	Engine oil	20 L
	Front and rear axles	43/43 L



STANDARD & OPTIONAL EQUIPMENT

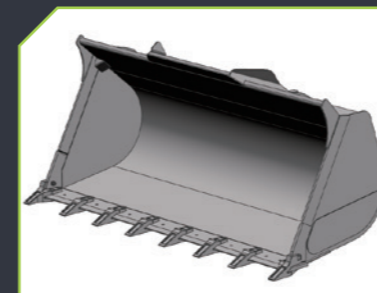
Category	Item	ZWL75G
Engine	Oil bath air pre filter	○
	Biodiesel oil-water separator	○
	Air cleaner	●
	Cyclone-type air pre-cleaner	●
	Three-stage fuel filter	●
Drivetrain	Dry axle	●
	Wet axle	○
Hydraulic System	Diagonal tire	●
	Fixed-variable displacement hydraulics	●
	Hydraulic service braking system	●
	Dual-circuit braking system	●
	Single-joystick pilot control	●
Electrical System	Dual-joystick pilot control	○
	Automatic lubrication	○
	Working mode selection (P/E)	●
	Joystick with FNR function	●
	Pilot safety switch	●
	Back-up camera	●
	12.3-inch LCD instrument	●
Operator's Cab	Lift limit	●
	Auto leveling	●
	Mechanical suspension seat	●
	Air suspension seat	○
	Air conditioner (with recirculation mode and fresh air mode)	●
	Radio and loudspeaker	●
	Storage box	●
	Cigarette lighter	●
	USB interface	●
	Safety hammer	●
	Fire extinguisher	●
Sunshade curtain	●	
Bucket	Cold start	○
	5.0m³ Gravel bucket	●
	5.5m³ Gravel bucket	○
	5.5m³ Flat bottom bucket	○
	6.0m³ Flat bottom bucket	○
	7.0m³ Flat bottom bucket	○
	4.0m³ Rock bucket	○

- STANDARD
- OPTIONAL

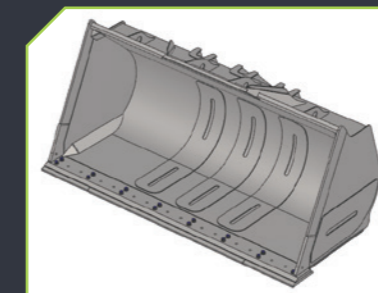


ATTACHMENTS

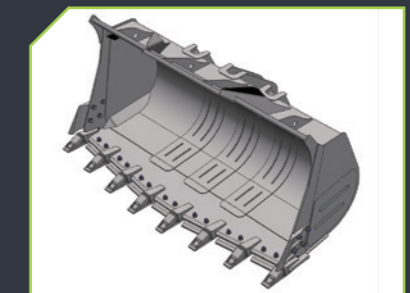
DIVERSIFIED AND SERIALIZED ATTACHMENTS



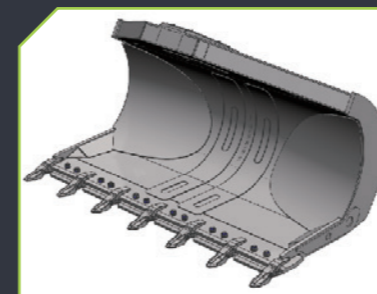
Gravel Bucket



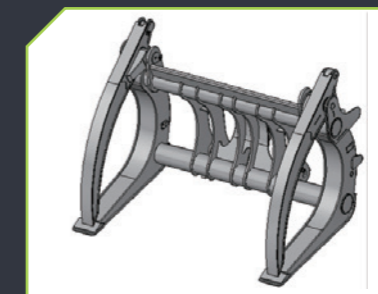
Flat Bottom Bucket



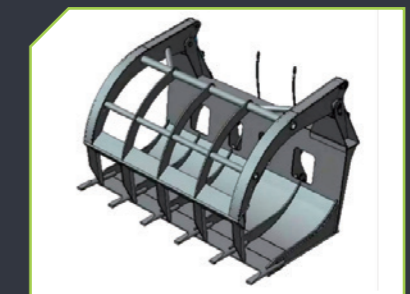
Rock Bucket



Side dump bucket



Wooden fork



Grass fork