

# ZOOMLION TECHNOLOGY WITH INGENUITY AND CARE



## THE WORLD'S LEADING EXCAVATOR INTELLIGENT MANUFACTURING FACTORY

ZOOMLION Smart City Earthmoving Machinery Park is an industry-leading intelligent and flexible excavator factory. From a piece of steel plate to an excavator, with high-precision welding process, highly reliable assembly process, high-level coating process and strict quality control, each excavator is delivered with ultimate quality.

# ZOOMLION WHEEL LOADER

## ZWL62G



**ZOOMLION**

**ZOOMLION**

**Zoomlion Heavy Industry Science & Technology Co.,Ltd.**

Add: Zoomlion Smart City Headquarters Building, No.613 Naqiu Road, Wangcheng District, Changsha, Hunan, China 410221  
Email: [earthmoving@zoomlion.com](mailto:earthmoving@zoomlion.com)  
Copyright © Zoomlion. All rights reserved. Reproduction and copying of any part of contents is not allowed for any purposes without Zoomlion's approval.  
Note: Materials and specifications are subject to change without notice. Featured machines in photos may include additional equipment.



**VISION  
CREATES  
FUTURE**

## **ZWL62G**

Rated power: 178 kW / 2200 rpm

Operating Weight: 18200 kg

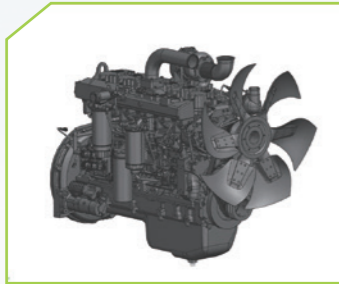
Rated Payload: 6000 kg

Bucket Capacity: 3.5 (2.7-5) m<sup>3</sup>



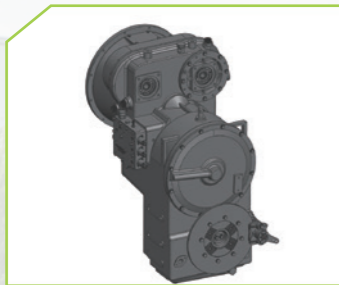
# CONFIGURATION & EFFICIENCY

## POWER SYSTEM



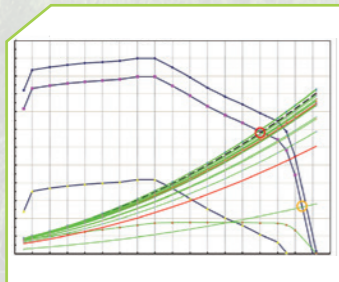
### Robust power, optimal efficiency

- Equipped with high-power electronically controlled high-pressure common rail technology, it enables multiple injections in a single cycle, delivering a large torque reserve coefficient and robust power output; With the application of a reinforced cylinder block, the in-cylinder explosion pressure is further elevated, enabling more thorough combustion, delivering stronger power performance and greater driving force. By adopting the 4-valve technology, the air intake is more sufficient, and the combustion efficiency is heightened to a superior level.
- The P/E (heavy load, medium-light load) two-stage power control mode allows for reasonable selection according to working conditions, reducing energy consumption and improving productivity.



### Large displacement, excellent compatibility

- The hydraulic automatic shifting planetary transmission and large-capacity dual-turbine torque converter, equipped with Zoomlion's professional power matching technology, achieve perfect matching with the engine.



### Powerful strength, high velocity

- In combined working conditions (traveling and operating simultaneously), it enjoys substantial rimpull and lifting force, together with strong explosive power and high operation efficiency. Through reasonable matching with the engine, torque converter, drive shaft and drive axle, it realizes maximum operation efficiency, featuring excellent speed acceleration performance.

## Multi-stage fuel filtration

Multi-stage filtration system precisely captures contaminants of different particle sizes, effectively extending filter service life and reducing maintenance costs. This safeguards your investment by minimizing downtime and optimizing operational efficiency. Optional biodiesel specific oil-water separator.



Engine



Secondary filter



Primary filter



Fuel-water separator with electronic fuel pump

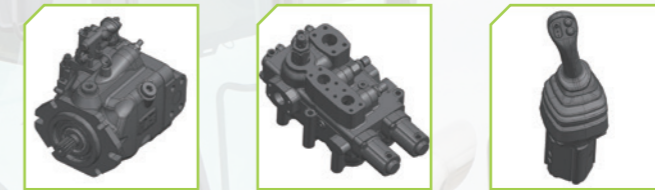


Fuel tank

## HYDRAULIC SYSTEM

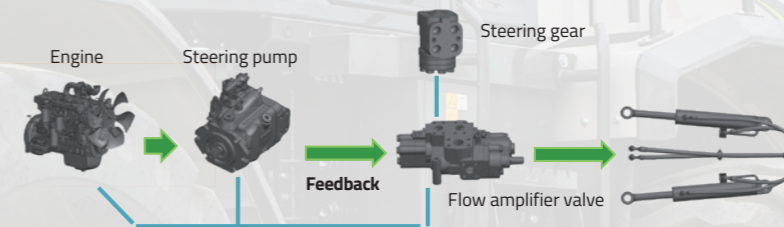
### Strong capability, exceptional intelligence

The intelligent fixed-variable hydraulic system adaptively adjusts its parameters in real-time to suit varying working conditions. It delivers exceptional breakout force during heavy-duty operations and minimizes flow losses in rapid shoveling and loading.



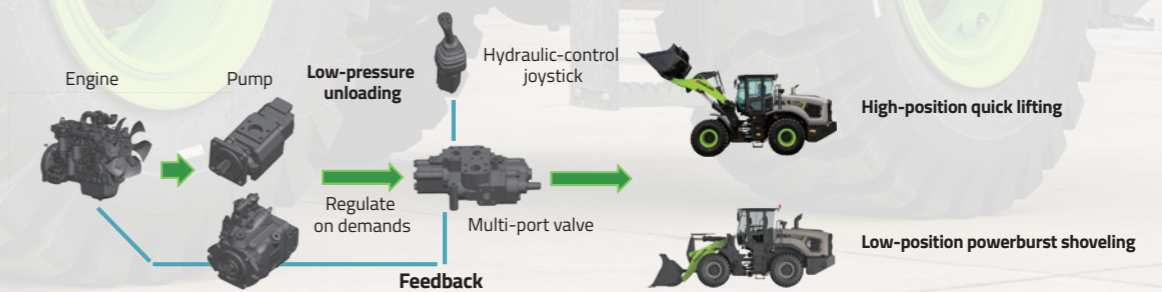
Fixed-variable hydraulics + load sensing system + hydraulic pilot control

### Steering and handling: the variable piston pump delivers flow on-demand.



Leading full-hydraulic dynamic load-sensing steering system ensures light operation and flexible steering. The steering system delivers flow on-demand and regulates pressure in response to load variations, featuring sensitive response and high control accuracy for optimal adaptation to complex working conditions.

### The variable piston pump delivers on-demand flow, while the service pump is promptly disengaged.



Advanced dual-pump flow merging fixed-variable technology integrates stable flow output of fixed hydraulic pumps with flexible adjustment of variable hydraulic pumps, automatically switching to optimal working modes for heavy-duty and light-duty worksites to effectively reduce comprehensive energy consumption.

# PERFORMANCE ADAPTABILITY



**Reliable air-cushion oil brake system**

Large volume air storage tank ensures stable braking force output. Equipped with a quick change connector as standard, it can provide a clean air source for tire inflation, dust cleaning, and filter maintenance.



**Optional wet-type drive axle**

Exceptional braking performance with efficient heat dissipation; Sealed design prevents muddy water from entering the brake chamber, maintaining performance even in wading or muddy conditions.



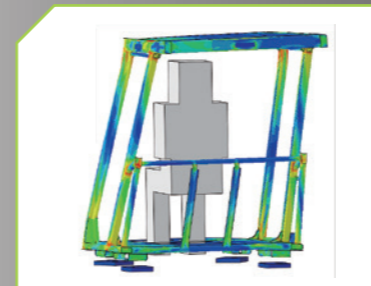
**Optional 360° surround view camera**

It eliminates blind spots to significantly enhance safety, and features easy operation to reduce driver fatigue.



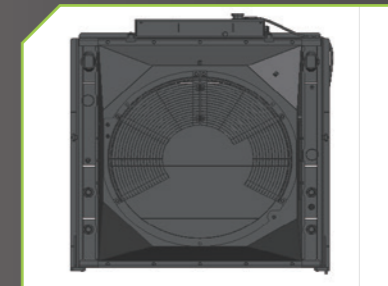
**Strong adaptability to low temperatures**

Equipped with air intake grille heating of engine, it allows for rapid air intake preheating to reduce starting wear. The large-capacity starter battery can still provide sufficient starting power when battery capacity decreases at low temperatures.



**FOPS & ROPS cab**

Adopting an enclosed structure welded with high-strength steel, it can withstand the impact of 25-ton vertical load. Meeting the international standard certification of ISO3449/3471, it is specially designed for medium and large loaders with ultimate safety protection.



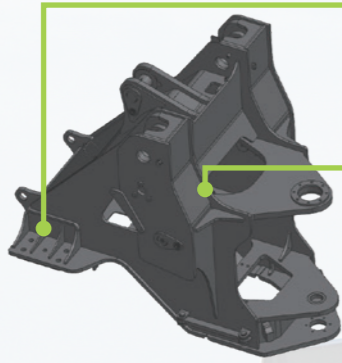
The large wave distance single-layer radiator design provides a larger heat dissipation area, a reasonable system layout, and a comprehensive improvement in heat dissipation efficiency, meeting the requirements of a 50 °C environment.

# RELIABILITY & DURABILITY

## SAFE AND RELIABLE INTERMEDIATE HINGE

The intermediate articulation is equipped with double tapered roller bearings, featuring strong load-bearing capacity and adaptability to high-intensity harsh working conditions.

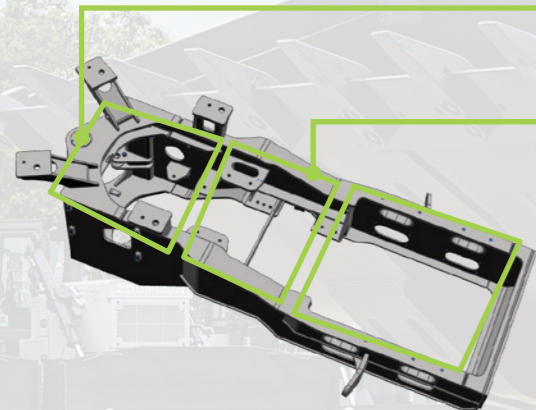
### ● High-strength wing-box front frame



Reinforced front axle mounting seat, with additional "U-shaped support ribs" structure, can effectively distribute heavy front axle loads and enhance reliability.

Reinforced left and right wing-box structures with a 6% increase in cross-sectional area, enhancing load-bearing capacity.

### ● High-load-bearing articulated rear frame



Large-sized articulated opening effectively bears heavy transverse torque loads on the frame.

Large-sized web height effectively bears the longitudinal vertical loads of the frame. This structure has obtained a utility model patent: A Reinforced Rear Frame for Three-Section Loaders.



Double tapered roller bearings



Upper articulation assembly

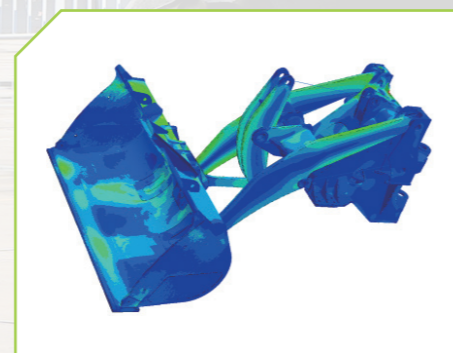


Lower articulation assembly



### Heavy-duty drive axle

High static load capacity ensures reliability under extreme working conditions; The rear axle adopts an integrated cast swing frame, featuring strong load-bearing capacity and low failure rate; Fully hydraulic caliper braking, safe and reliable.



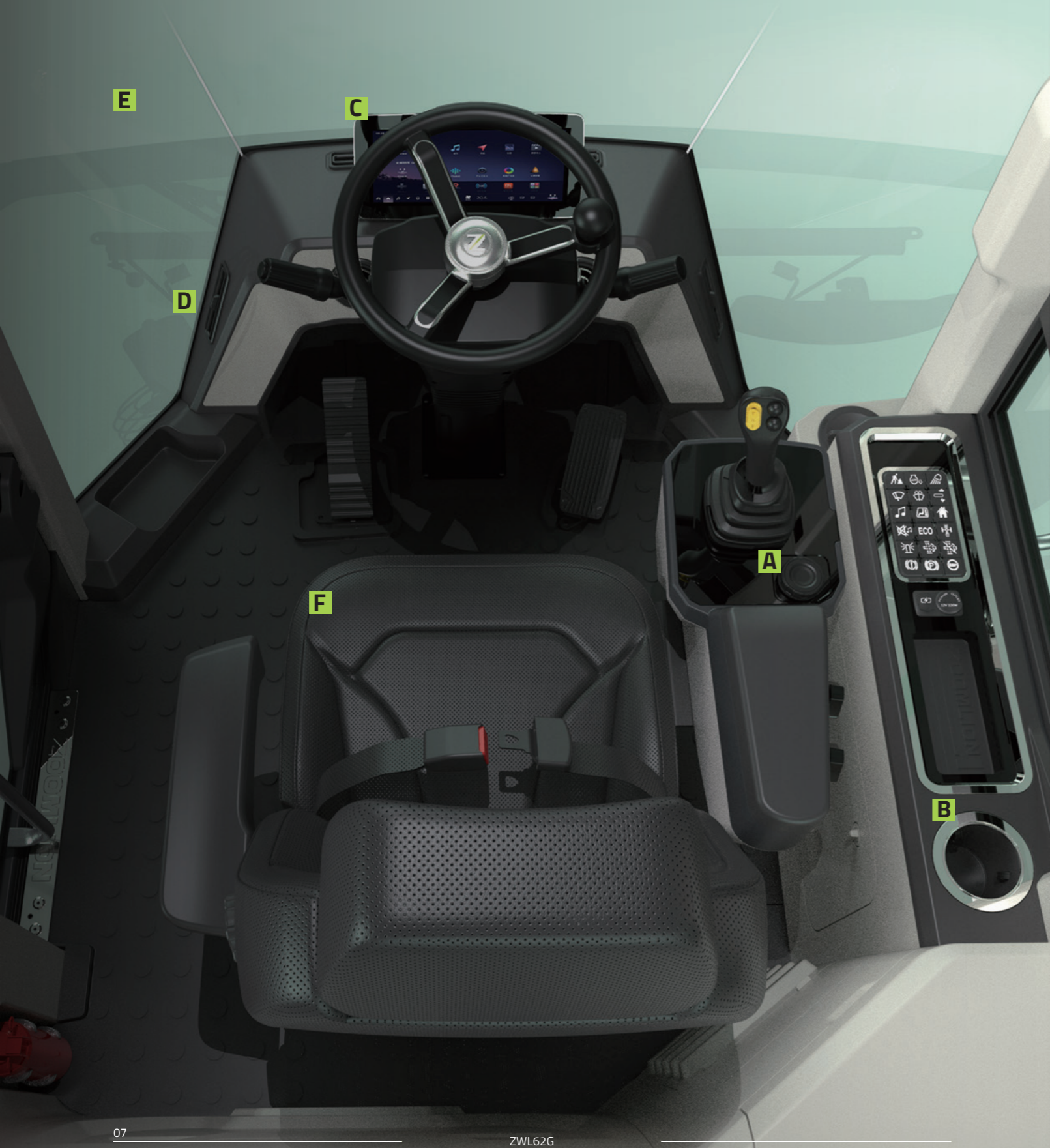
### High reliability verified by sufficient testing

Structural parts undergo CAE analysis to reduce stress concentration; Dynamic loading test stands and extreme fatigue durability tests are fully utilized to ensure the high reliability of the structure.



Equipped with multiple original patented technologies and subjected to thousands of quenching cycles under harsh working conditions, the control commands are precise to the millisecond level, resulting in a 50% increase in product reliability and durability.

# COMFORT & INTELLIGENCE



## Sedan-level experience brings maximum driving comfort



Push start



Cup holder



12.3-inch LCD touch-screen monitor, with standard back-up camera; Equipped with fault detection and fault codes display.



The cab is hermetically sealed with a pressure of +50 Pa, and equipped with N95-class filter elements, with a PM2.5 filtration efficiency of ≥99%



With 360° large-area panoramic glass stretching to the floor, the vision area reaches 3.52 m<sup>2</sup>, the largest in the industry, ensuring extremely broad operational visibility.



Spacious operating space, adjustable armrest box and handle, providing a more comfortable driving experience.

# CONVENIENT MAINTENANCE



The engine hood can tilt backward by more than 60° , providing convenient maintenance, repair and inspection for internal filters with a large service space.



The tank bodies are arranged centrally, accessible from the ground, making daily maintenance convenient.



Grease lubrication points are centrally led out for ground-level access, enabling convenient daily maintenance.

# CUSTOMER SERVICE

Zoomlion's service technicians are distributed in key countries worldwide. Based on customers' equipment distribution, technicians maintain long-term stationed presence, ensuring immediate response to customer needs. Every year, Zoomlion service technicians carry out the Service Tour to visit both new and old customers to collect rational suggestions and attentively listen to service demands.

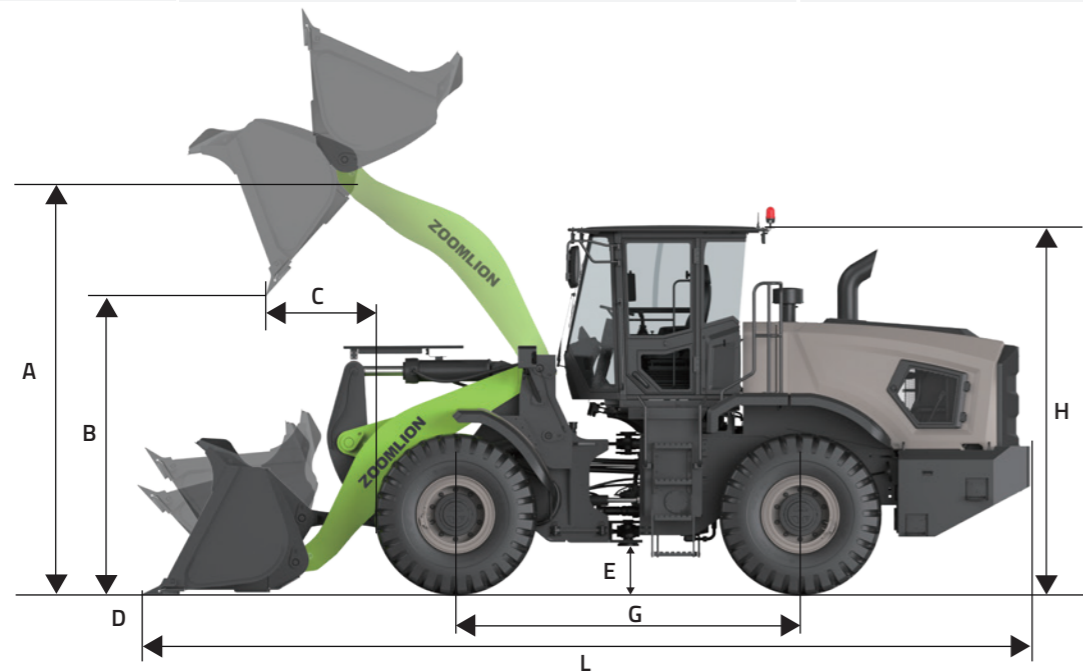
We promptly fulfill customers' needs and respond to reasonable requests.

We provide training for operators of each equipment, fully committed to ensuring stable operation of customer equipment.

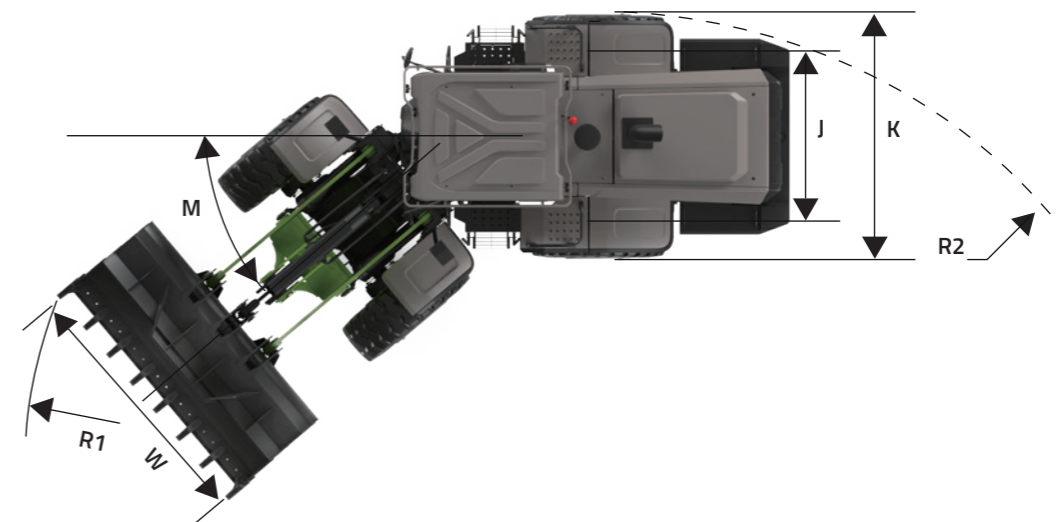


# TECHNICAL PARAMETERS

Category	Item	ZWL62G
Overall Machine Parameters	Operating weight	18200 kg
	Rated load	6000 kg
	Rated bucket capacity	3.5 m <sup>3</sup>
	Optional bucket capacity	2.7-5 m <sup>3</sup>
	Max. breakout force	169 kN
	Max. rimpull	185 kN
	Lift-dump-descend time	9.3 s
	Max. travel speed	14.5/40 km/h
	Max. gradeability	28 °
	L Overall length	8450 mm
	W Bucket width	3100 mm
	H Overall height	3550 mm
	A Boom hinge point height	4340 mm
	B Dump height (45° dump angle)	3188 mm
	C Dump reach (45° dump angle)	1248 mm
	G Wheelbase	3350 mm
	J Tread	2260 mm
	M Steering angle	38 °
	R2 Min. turning radius (outside of rear wheels)	6300 mm
	R1 Min. turning radius (outside of buckets)	7120 mm
E Min. ground clearance	440 mm	
Tipping load, straight	145 kN	
Tipping load, full turn	125 kN	



Category	Item	ZWL62G
Engine	Engine model	WP10G240E341
	Type	Turbocharged, in-line, direct injection, water-cooling, four stroke cycles
	Power	178 / 2200 kW/rpm
Drivetrain	Displacement	9.726 L
	Transmission	Automatic power shift
	Drive axle	Dry
Hydraulic System	Tire	23.5-25-20PR
	System type	Fixed-variable hydraulics
	Steering pump type	Swash plate variable piston pump
	Service pump type	Gear pump
	Steering system pressure	18 Mpa
Brake System	Working system pressure	22 Mpa
	System type	Air-cushion hydraulic brake
	Brake system pressure	12.5 Mpa
Service Refill Capacities	Fuel tank volume	290 L
	Transmission oil capacity	45 L
	Hydraulic tank	185 L
	Engine oil	20 L
	Front and rear axles	45/45 L



# STANDARD & OPTIONAL EQUIPMENT

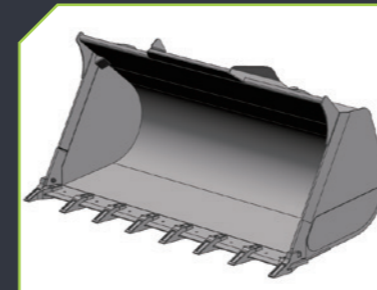
Category	Item	ZWL62G
Engine	Oil bath air pre filter	○
	Biodiesel oil-water separator	○
	Air cleaner	●
	Cyclone-type air pre-cleaner	●
	Three-stage fuel filter	●
Drivetrain	Dry axle	●
	Wet axle	○
	Diagonal tire	●
Hydraulic System	Fixed-variable displacement hydraulics	●
	Air-over-hydraulic braking system	●
	Hydraulic service braking system	○
	Single-joystick pilot control	●
	Dual-joystick pilot control	○
Electrical System	Automatic lubrication	○
	Working mode selection (P/E)	●
	Joystick with FNR function	●
	Pilot safety switch	●
	Back-up camera	●
	12.3-inch LCD instrument	●
	Lift limit	●
	Auto leveling	●
Operator's Cab	Mechanical suspension seat	●
	Air suspension seat	○
	Air conditioner (with recirculation mode and fresh air mode)	●
	Radio and loudspeaker	●
	Storage box	●
	Cigarette lighter	●
	USB interface	●
	Safety hammer	●
	Fire extinguisher	●
	Sunshade curtain	●
	Cold start	○
	Tire inflation kit	○
	Dust cleaning tool kit	○
Bucket	3.5m³ Gravel bucket	●
	4.0m³ Gravel bucket	○
	4.0m³ Flat bottom bucket	○
	4.5m³ Flat bottom bucket	○
	5.0m³ Flat bottom bucket	○
	2.7m³ Rock bucket	○

- STANDARD
- OPTIONAL

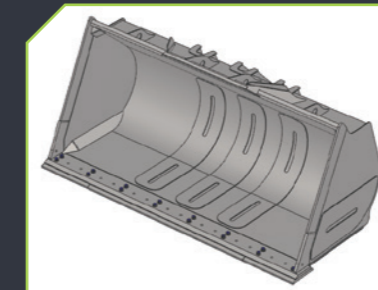


## ATTACHMENTS

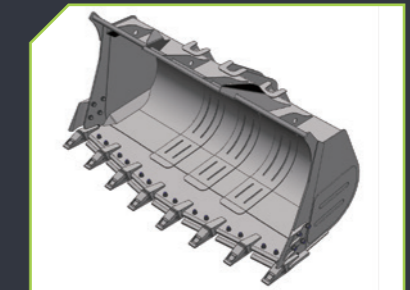
DIVERSIFIED AND SERIALIZED ATTACHMENTS



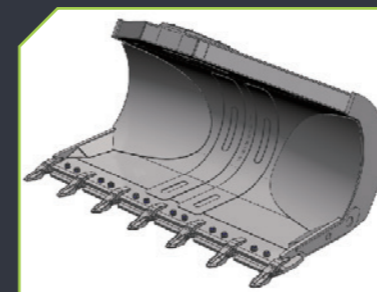
Gravel Bucket



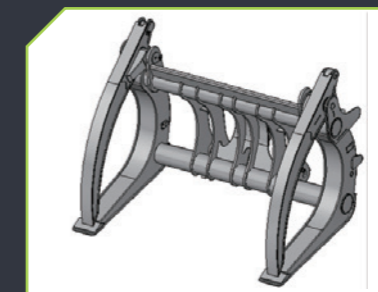
Flat Bottom Bucket



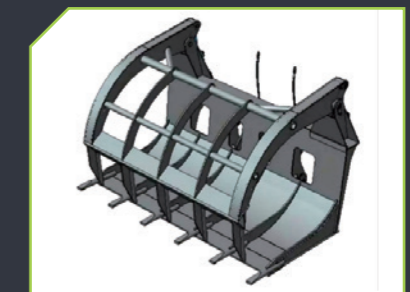
Rock Bucket



Side dump bucket



Wooden fork



Grass fork