

ZOOMLION SPIDER LIFT ZX37T

Comply with CE Standard



HIGHLIGHTS

- ▶ 1.2m ultra-narrow width, quick-change work platform, easy access to compact spaces
- ▶ 120kg/230kg/330kg various loads for various working conditions
- ▶ Engine + Plug-in work mode for multiple applications
- ▶ Symmetric layout boom, great structural rigidity, and small boom deflection
- ▶ Telescopic jib for flexible boom end
- ▶ Non-marking rubber track suitable for all terrains

FEATURES

Standard Features

| |
|----------------------------|
| Proportional control |
| All motion alarm |
| Flashing beacon |
| Self-closing entry gate |
| Emergency descent system |
| Emergency stop button |
| Auto-leveling system |
| On-board diagnostic system |
| Auto-leveling outrigger |
| Non-marking rubber track |
| Load sensing system |
| Color display |
| Horn |
| Hour meter |
| Use while charging |
| AC power to platform |

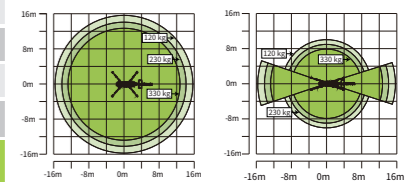
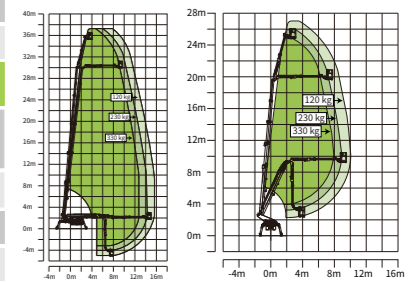
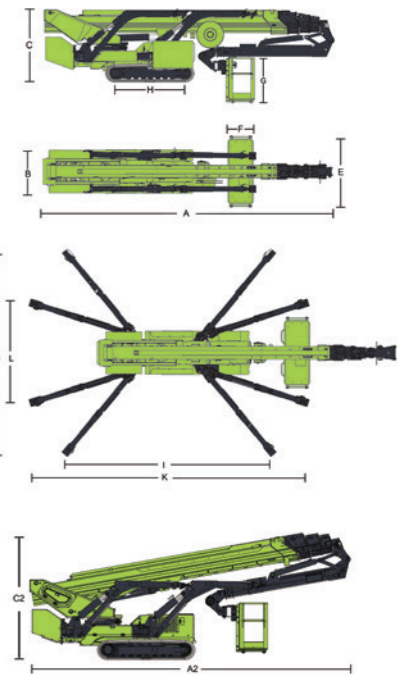
ACCESS WITH ZOOMLION GREEN

Phone: 0086(731)-88353692
E-mail: awp@zoomlion.com

Add: 701 Xulong Nan Lu, Xiangjiang New District, Changsha Hunan, China
Web: www.zoomlion-access.com

ZOOMLION

| Model | ZX37T | |
|--|--|--|
| | Imperial | Metric |
| Size | | |
| Work Height | 122ft 5in | 37.3m |
| Platform Height | 115ft 10in | 35.3m |
| Horizontal Outreach | 51ft 6in | 15.7m |
| Below Ground Reach | 18ft 8in | 5.7m |
| A - Stowed Length (w/ platform) | 25ft 11in | 7.9m |
| D - Stowed Length (w/o platform) | 25ft 11in | 7.9m |
| B - Stowed Width | 3ft 11in | 1.2m |
| C - Stowed Height | 6ft 6in | 1.99m |
| E - Platform Length | 5ft 11in | 1.8m |
| F - Platform Width | 2ft 4in | 0.7m |
| G - Platform Height | 3ft 7in | 1.1m |
| H - Crawler Size (Length×Width) | 7ft 12in×12in | 2.43m×0.3m |
| I - Max Length w/ Outrigger Extending (Standard) | 18ft 3in | 5.55m |
| L - Max Width w/ Outrigger Extending (Standard) | 17ft 9in | 5.4m |
| K - Max Length w/ Outrigger Extending (Narrow) | 24ft 1in | 7.35m |
| J - Max Width w/ Outrigger Extending (Narrow) | 8ft 10in | 2.68m |
| Outrigger Pad Size (Diameter) | 9ft×8ft | 0.24m*0.2m |
| Approach Angle | 19° | |
| Departure Angle | 24° | |
| H - Gransport length | 26ft 25in | 8.00m |
| I -Transport height | 6ft 56in | 2.00m |
| Performance | | |
| Platform Capacity | 507lb /728lb(restricted) /265lb (unrestricted) | 230kg/330kg (restricted) /120kg (unrestricted) |
| Drive Speed | 1.5mph | 2.4km/h |
| Gradeability | 19.8°/36% | |
| Allowable Tilting Angle When Driving | 8.5/15% | |
| Turntable Swing | 360°continuous | |
| Platform Rotation | ±90° | |
| H-Tail Swing | 0m | |
| Max Leveling Angle | 13° | |
| Max Wind Speed | 28 mph | 12.5m/s |
| Power | | |
| Engine | Yanmar | |
| Auxiliary Power | Electric pump | |
| Hydraulic Tank Capacity | 29.1 us gal | 110L |
| Track | | |
| Type | Non-marking rubber track | |
| Weight | | |
| Gross weight | 18519 lb | 8400kg |
| Ground Pressure When Driving | 46.34N/m ² | |
| Ground Pressure When Working (Standard) | 2.61N/m ² | |
| Ground Pressure When Working (Narrow) | 4.47N/m ² | |
| Pressure on Single Outrigger When Working | 47KN | |



Range of Motion ZX37T

ZOOMLION ACCESS reserves the right to make specification and/or equipment changes without prior notification. Product specifications are updated to May, 2026.